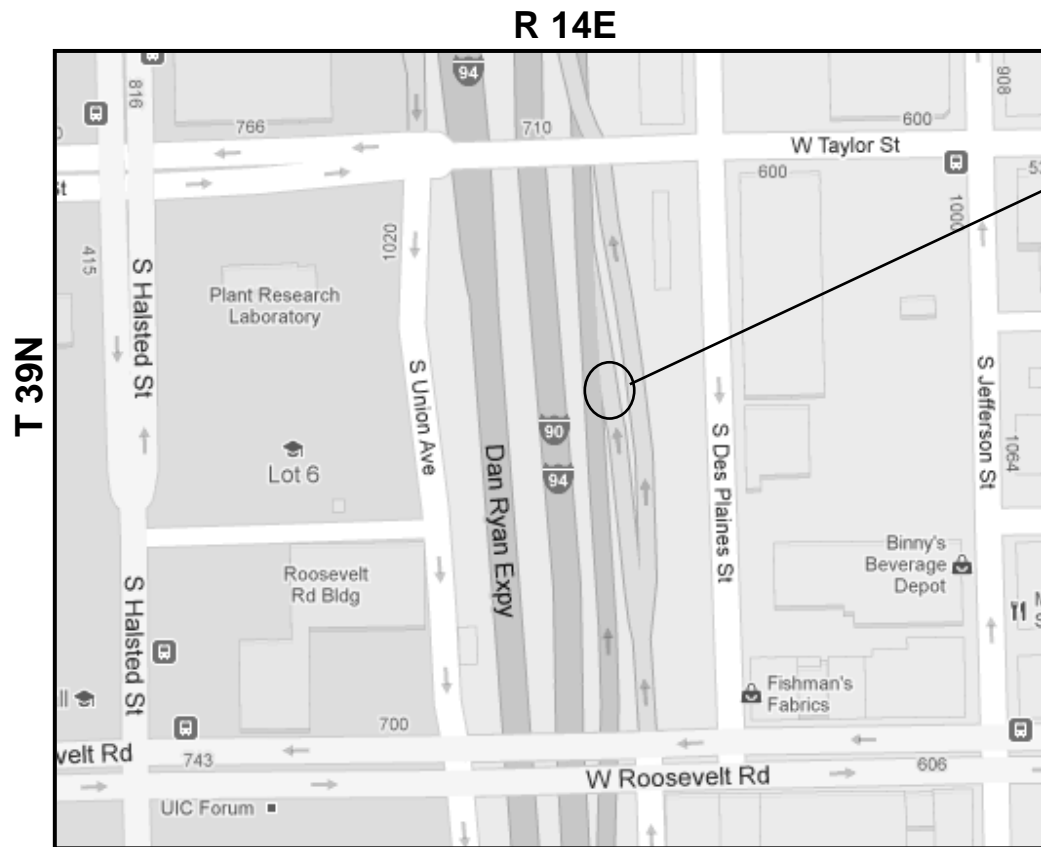


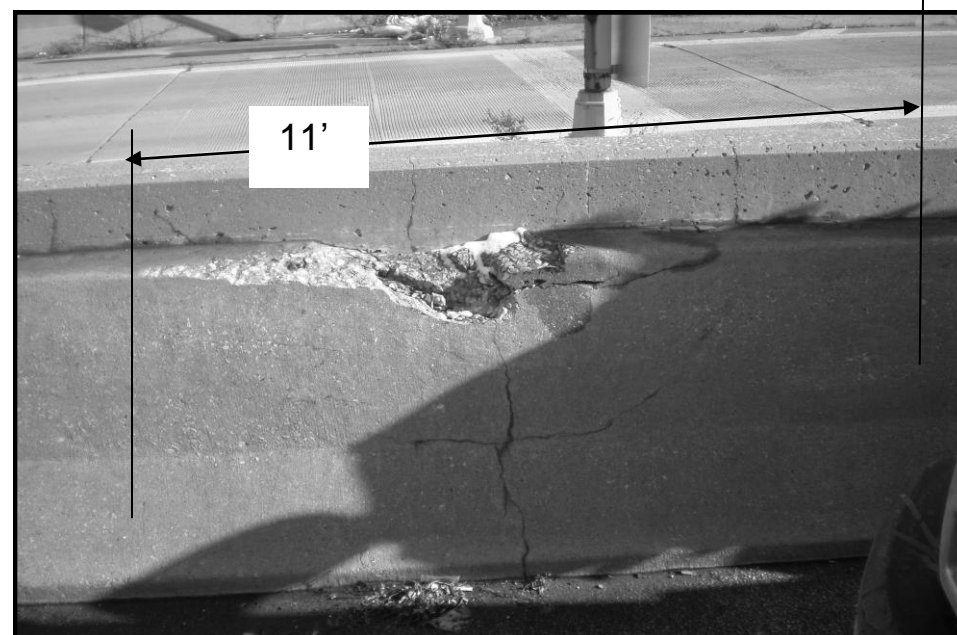
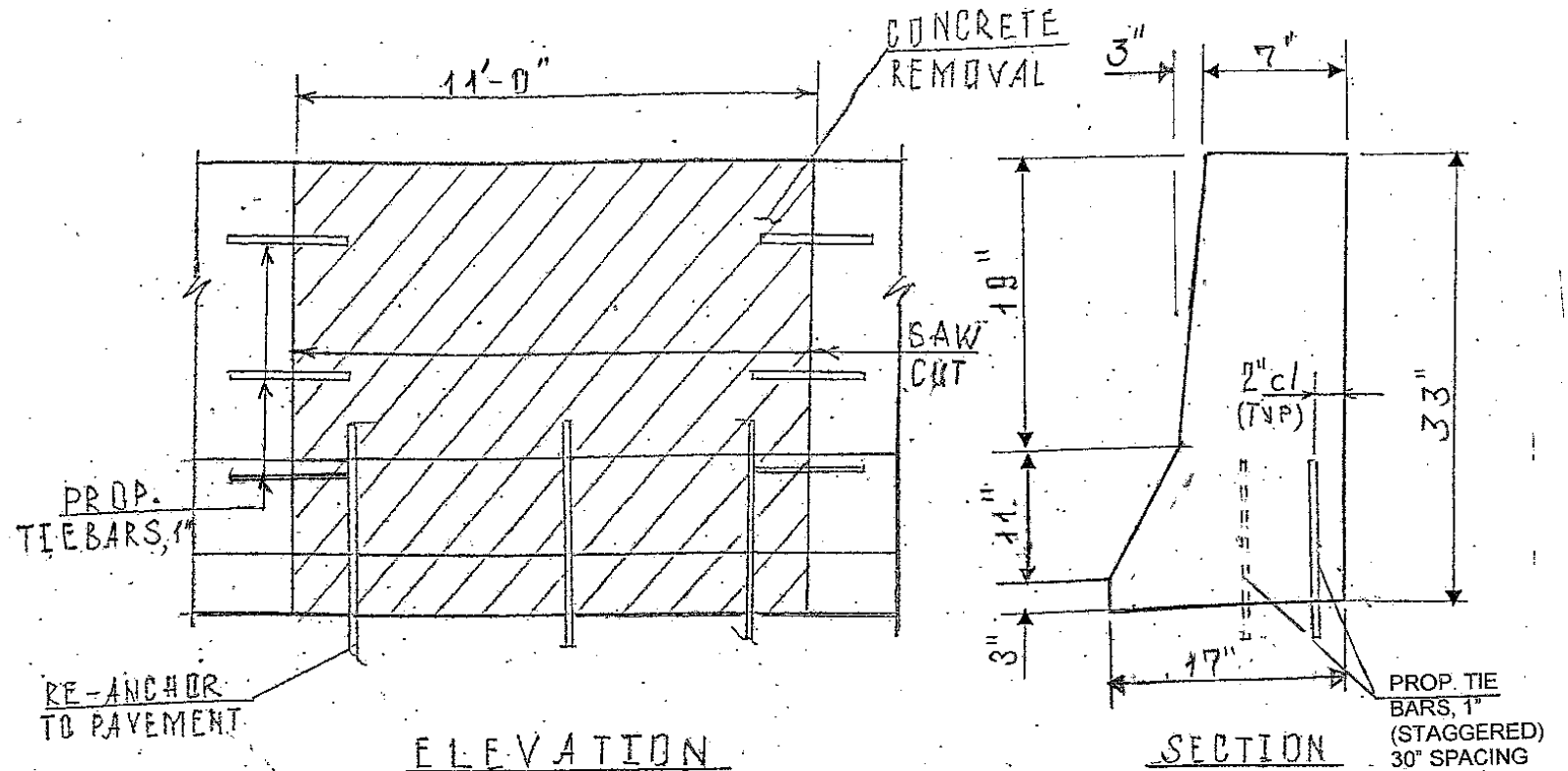
ROUTE	SECTION	COUNTY	TOTAL SHEETS	SHEET NUMBER
VARIOUS	2011-059-I	VARIOUS	44	20

Contract 60P77

**LOCATION 10: I-90/94 (DAN RYAN) WB**  
 LOCAL, 450' NORTH OF ROOSEVELT RD  
 BRIDGE, RIGHT SIDE



**CITY OF CHICAGO**  
**WEST CHICAGO TOWNSHIP**  
**COOK COUNTY**



**FULL DEPTH REPAIR**  
 REPLACE 11 FT OF BARRIER WALL  
 FOR MORE DETAILS SEE SHEET # 8

**BILL OF MATERIALS**

ITEM	UNIT	QUANTITY
CONCRETE REMOVAL	CU YD	1.0
CONCRETE STRUCTURE	CU YD	1.0
TIE BARS	EACH	11
SAW CUTS	FOOT	5.5
PROTECTIVE COAT	SQ YD	4.3

**TRAFFIC DATA:**

I-90/94: SPEED LIMIT = 55 MPH  
 2009 ADT = 197100

ILLINOIS DEPARTMENT OF TRANSPORTATION

**LOCATION: 10**  
**I-90/94 (DAN RYAN EXPY)**  
**NORTH OF ROOSEVELT ROAD**