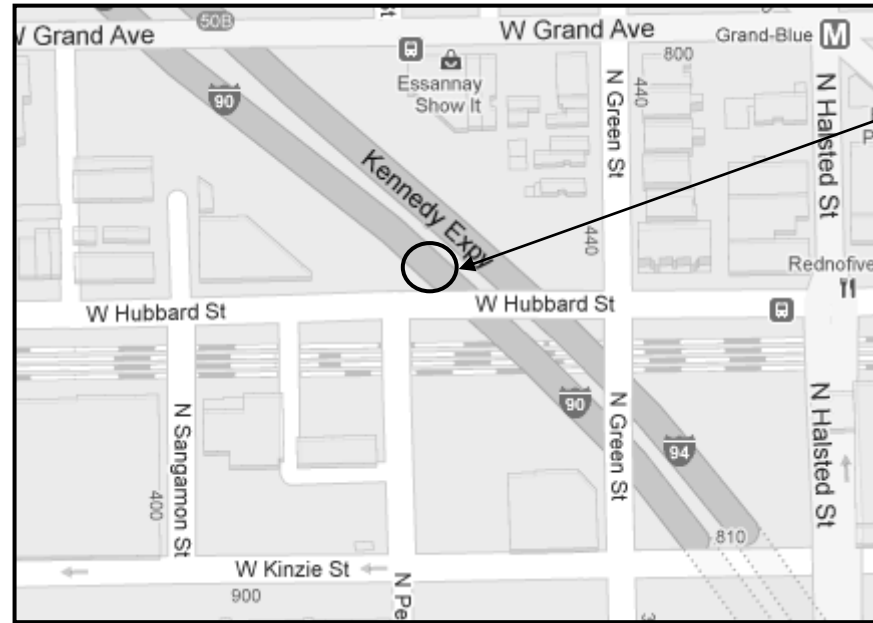


R 14E

T 39N

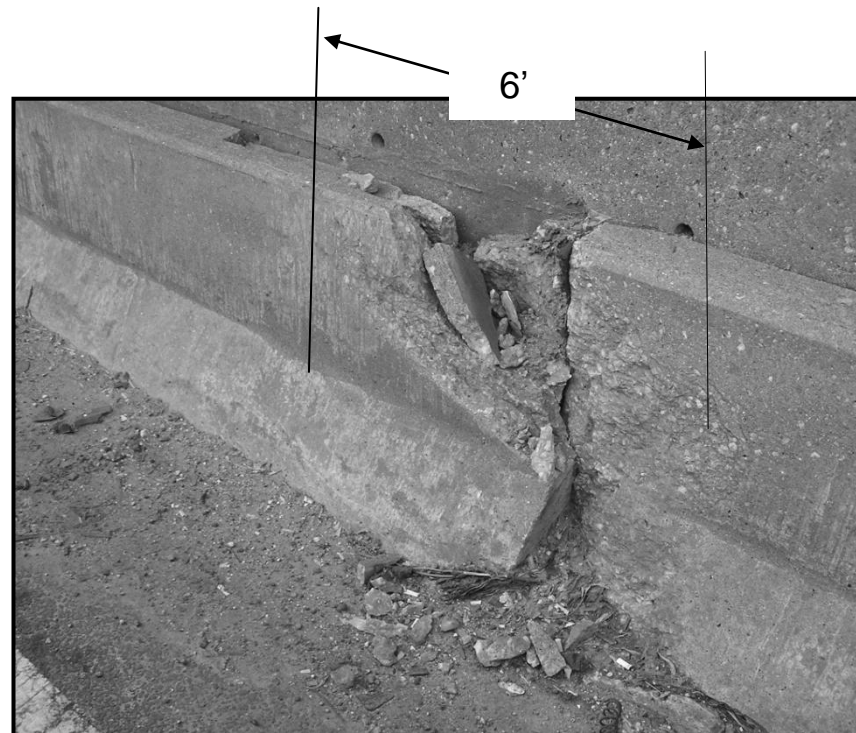
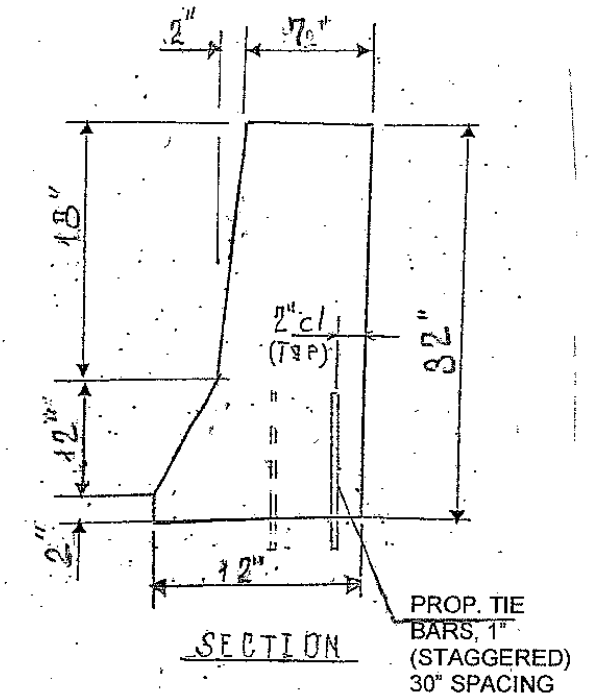
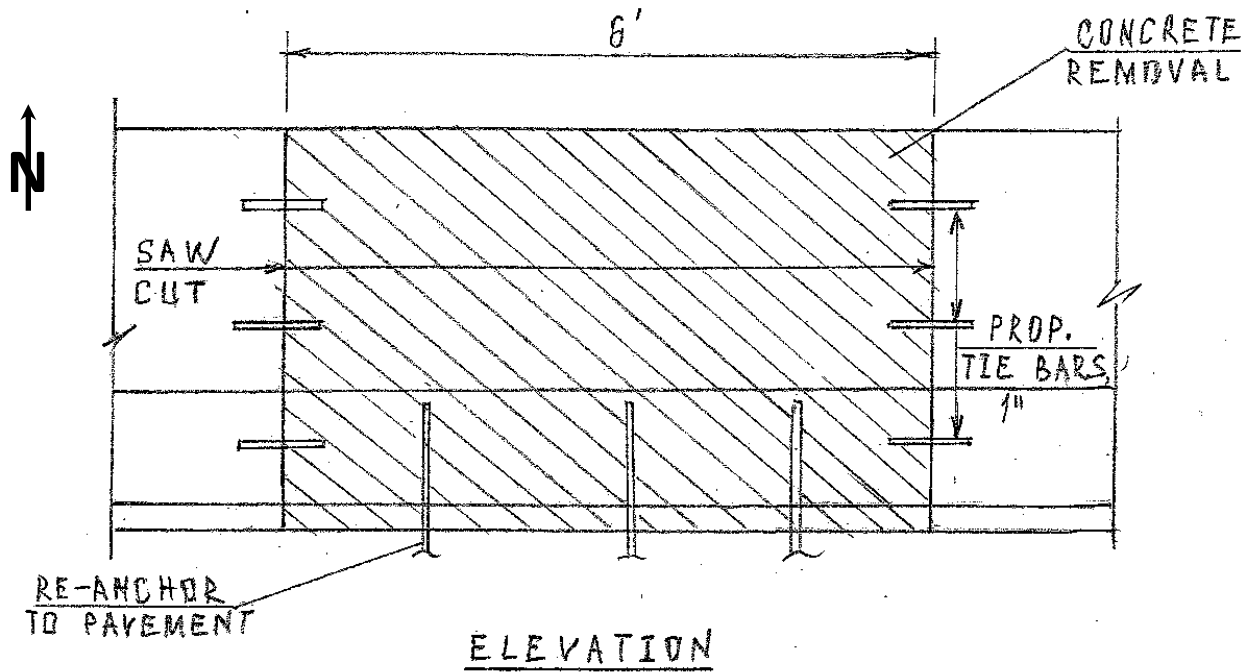


CITY OF CHICAGO  
WEST CHICAGO TOWNSHIP  
COOK COUNTY

ROUTE	SECTION	COUNTY	TOTAL SHEETS	SHEET NUMBER
VARIOUS	2010-059-I	VARIOUS	44	35

Contract 60P77

**LOCATION 22: I-90/94 (KENNEDY EXPY) EB**  
AT THE ENTRANCE TO HUBBARD'S CAVE, RIGHT SIDE



FULL DEPTH REPAIR  
REPLACE 6 FT OF BARRIER WALL  
FOR MORE DETAILS SEE SHEET # 8

**BILL OF MATERIALS**

ITEM	UNIT	QUANTITY
CONCRETE REMOVAL	CU YD	0.5
CONCRETE STRUCTURE	CU YD	0.5
TIE BARS	EACH	9
SAW CUTS	FOOT	5.5
PROTECTIVE COAT	SQ YD	2.2

**TRAFFIC DATA:**

I-90/94: SPEED LIMIT = 55 MPH  
2009 ADT = 284300

ILLINOIS DEPARTMENT OF TRANSPORTATION

LOCATION: 22  
I-90/94 (KENNEDY EXPY)  
AT HUBBARD'S CAVE