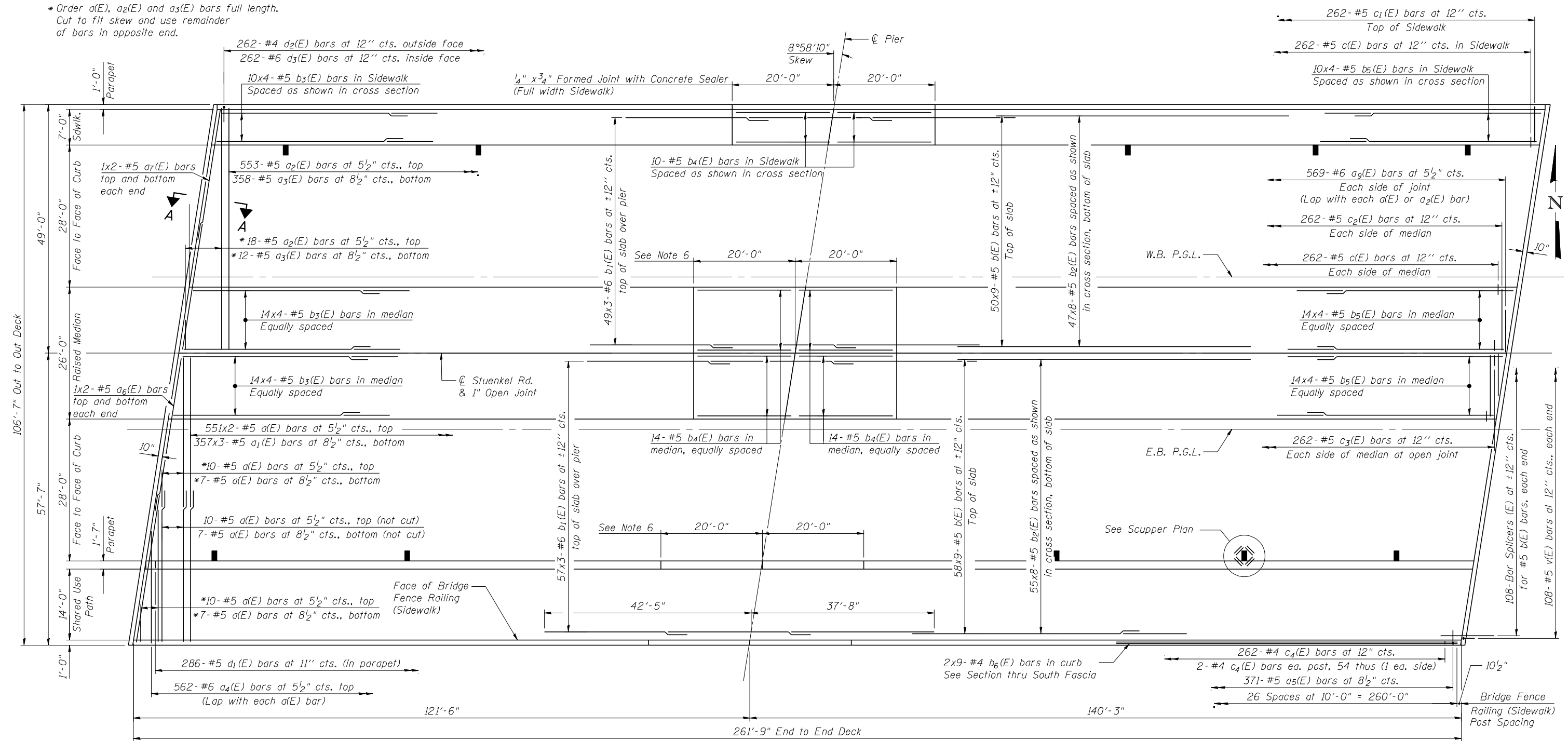


* Order a(E), a₂(E) and a₃(E) bars full length.
Cut to fit skew and use remainder of bars in opposite end.



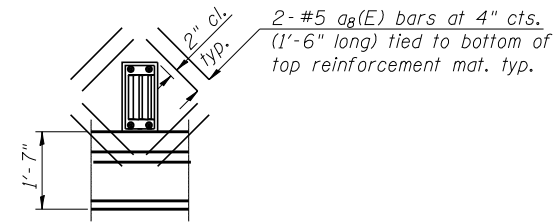
DECK PLAN

NOTES:

- See Sheet 9 thru 11 of 35 for superstructure details.
- See Sheet 10 of 35 for Bill of Material.
- Bars indicated thus 20 x 3-#5 etc. indicates 20 lines of bars with 3 lengths per line.
- See Sheets 10 and 12 of 35 for parapet reinforcement.
- For Scupper locations see Sheet 1 and 16 of 35.
- 1/8" Aluminum Sheet ASTM B209 alloy 3003-H14, coated to minimize reaction with wet concrete. Cost included with Concrete Superstructure.

MINIMUM BAR LAPS

Bar	Lap
#4	2'-7"
#5	3'-3"
#6	3'-10"



SCUPPER PLAN

Note:
Cut longitudinal reinforcement to clear drainage scuppers.