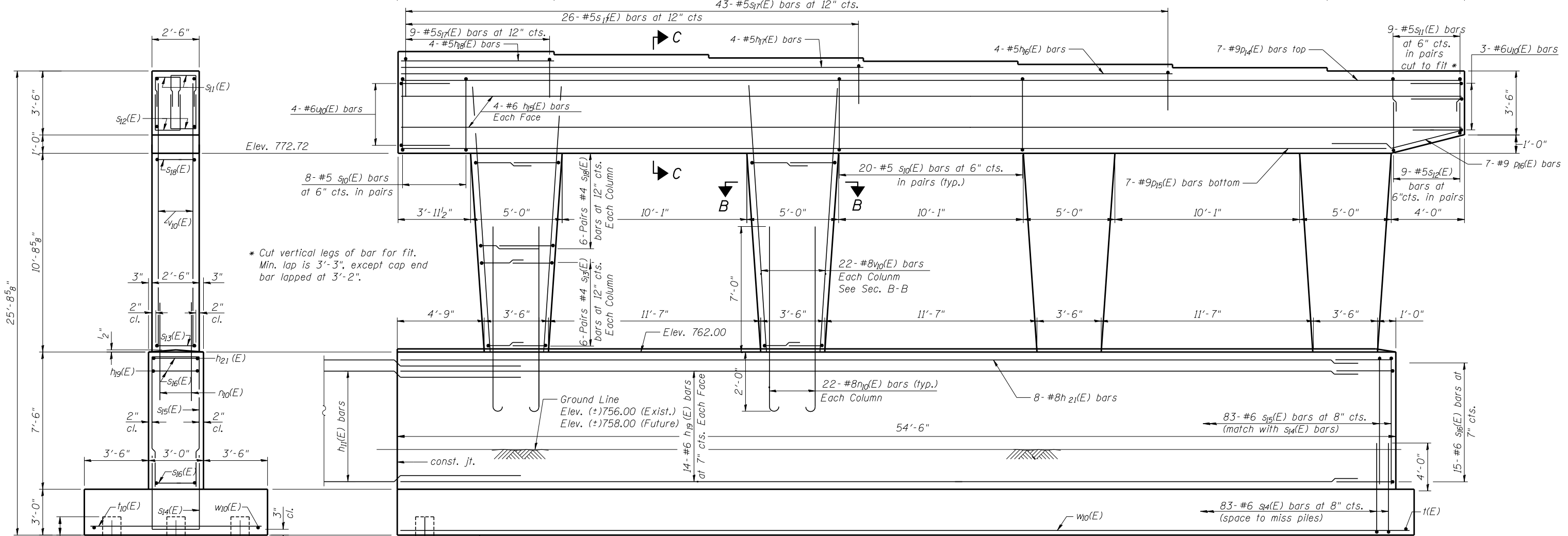
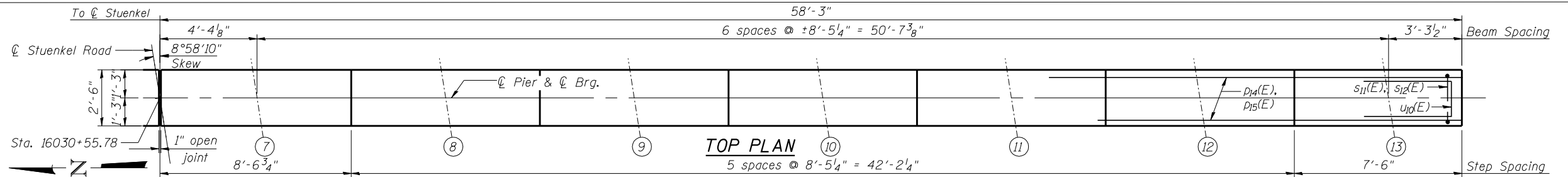
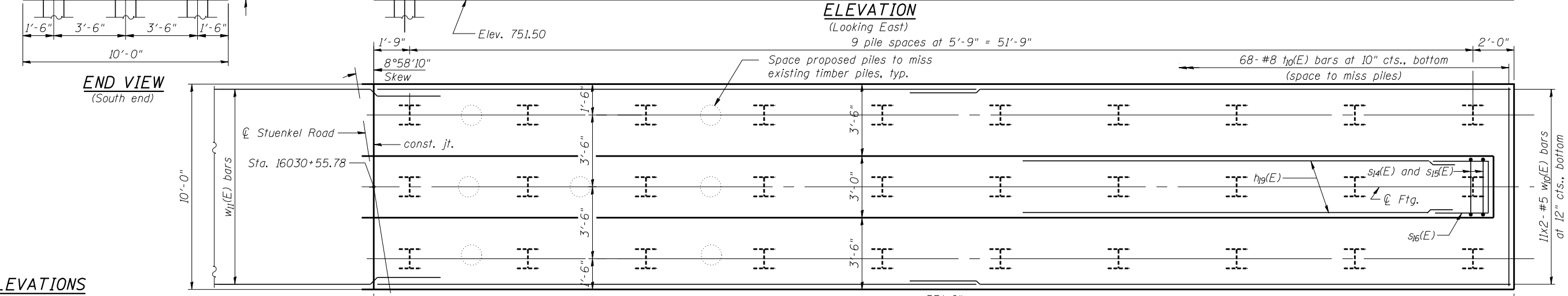


NOTES:

1. For Section B-B and C-C, see sheet 25 of 35.
2. For Bill of Material and Lap Splice Schedule, see sheet 25 of 35.
3. Space reinforcement in cap to miss anchor bolts.
4. Pour steps monolithically with cap.
5. For details of piles, see sheet 28 of 35.



END VIEW
(South end)



SEAT ELEVATIONS

Beam #	7	8	9	10	11	12	13
Elevation	778.27	778.10	777.92	777.75	777.57	777.40	777.22
Step Ht.	2"	2 1/8"	2"	2 1/8"	2"	2 1/8"	

TYLIN INTERNATIONAL USER NAME = PLOT SCALE = PLOT DATE =	DESIGNED - PK CHECKED - SP DRAWN - PK CHECKED - SP	REVISED - REVISED - REVISED - REVISED -	STATE OF ILLINOIS DEPARTMENT OF TRANSPORTATION	PIER - EASTBOUND STRUCTURE NO. 099-0526	F.A.I. RTE. 57 SECTION 99-1HB-R COUNTY WILL TOTAL SHEETS 63 SHEET NO. 46	
					CONTRACT NO. 60T40 ILLINOIS FED. AID PROJECT	
					SHEET NO. 24 OF 35 SHEETS	