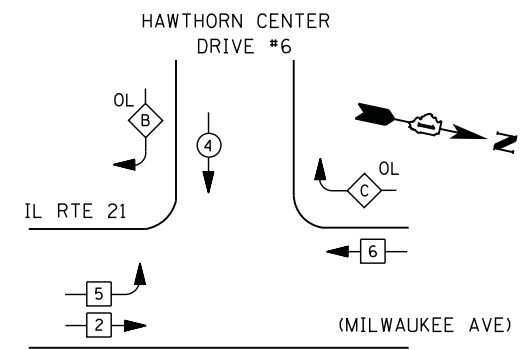
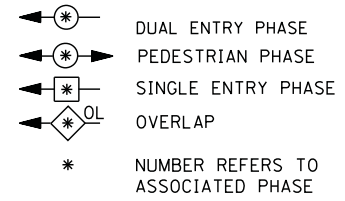


**CONTROLLER SEQUENCE**



**PHASE DESIGNATION DIAGRAM**

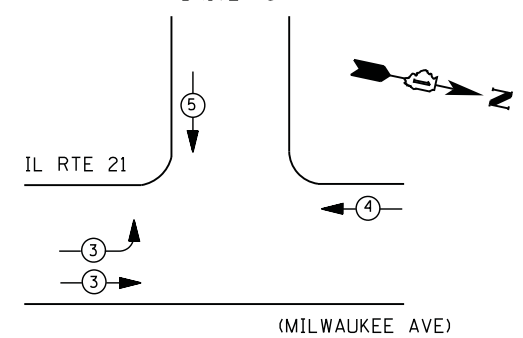
**LEGEND**



**RIGHT TURN OVERLAP PHASE DESIGNATION**

OVERLAP LETTER	PERMISSIVE PHASE	PROTECTED PHASE
B =	4 +	5
C =	6 +	4

**HAWTHORN CENTER DRIVE #6**



**EMERGENCY VEHICLE PREEMPTION SEQUENCE**

EMERGENCY VEHICLE PREEMPTORS			
EMERGENCY VEHICLE PREEMPTOR	3	4	5
MOVEMENT	→	←	↓

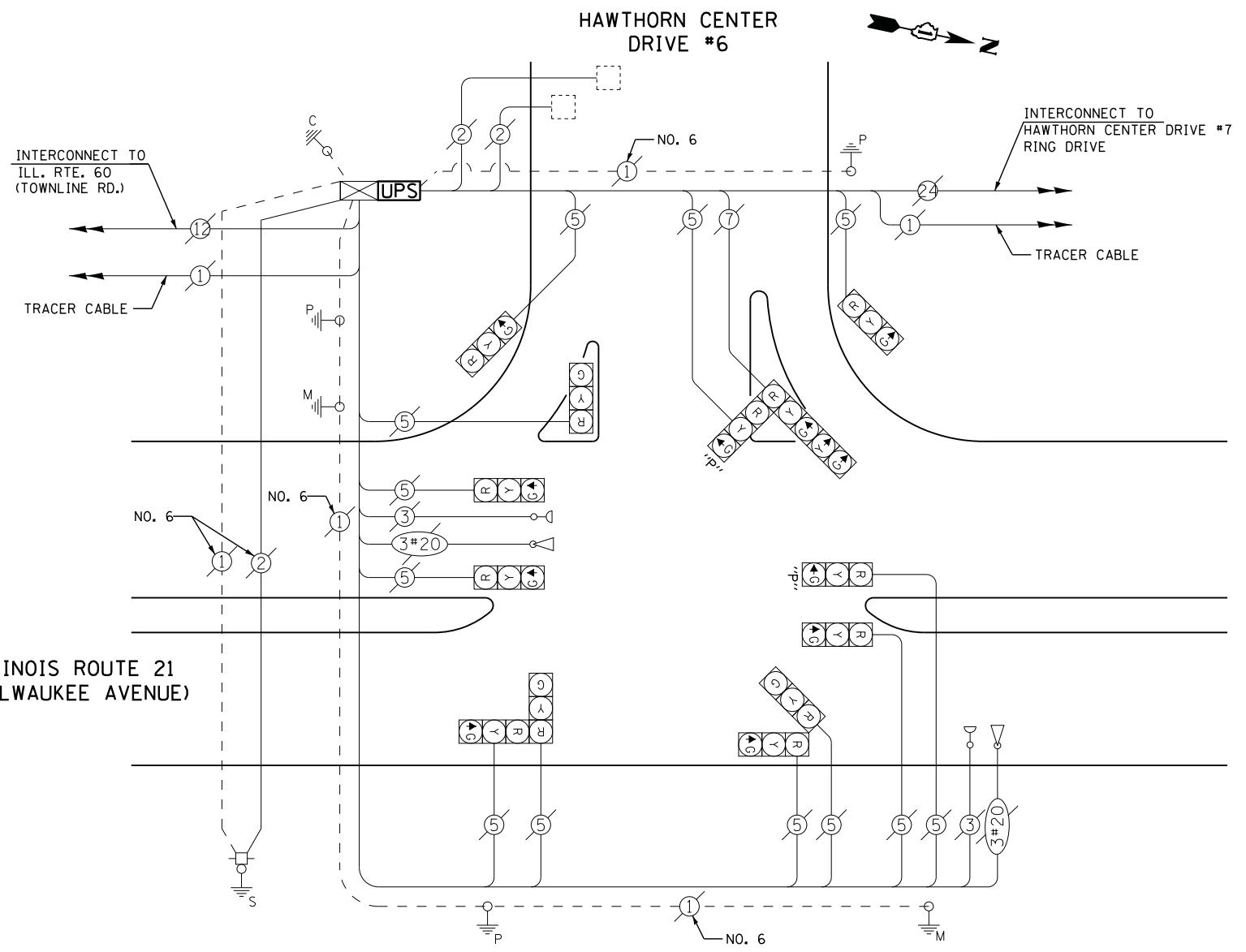
**I. D. O. T. TRAFFIC SIGNAL INSTALLATION ELECTRICAL SERVICE REQUIREMENTS**

TYPE	NO. LAMPS	WATTAGE		% OPERATIONS	TOTAL WATTAGE
		INCAND.	LED		
SIGNAL (RED)	13	135	17	0.50	111
(YELLOW)	13	135	25	0.25	81
(GREEN)	13	135	15	0.25	49
ARROW	2	135	12	0.10	10
PED. SIGNAL	0	90	25	1.00	--
CONTROLLER	1	100	100	1.00	100
ILLUM. SIGN		252	25	0.05	--
VIDEO SYSTEM		150	-	1.00	--
TOTAL =					351

ENERGY COSTS- **BILLED TO: VILLAGE OF VERNON HILLS**  
 290 EVERGREEN DRIVE  
 VERNON HILLS, IL 60061

ENERGY SUPPLY - CONTACT **TERRI BLECK**  
 PHONE 847-816-5239  
 COMMONWEALTH EDISON

**ILLINOIS ROUTE 21 (MILWAUKEE AVENUE)**



**CABLE PLAN**

**SCHEDULE OF QUANTITIES**

QUANTITY	UNIT	ITEM
1	EACH	MAINTENANCE OF EXISTING TRAFFIC SIGNAL INSTALLATION
1	EACH	MODIFY EXISTING CONTROLLER CABINET
1	EACH	UNINTERRUPTABLE POWER SUPPLY, SPECIAL

FILE NAME =	USER NAME = *USER*	DESIGNED - DW	REVISED -
N:\Projects\312004\Design\CAD\Sheet Files\12-001 Sheets SE Lake Co\06720_CAB.LAKE.dgn		DRAWN - JDH	REVISED -
	PLOT SCALE = *SCALE*	CHECKED - KMM	REVISED -
	PLOT DATE = 3/28/2012	DATE -	REVISED -

**STATE OF ILLINOIS DEPARTMENT OF TRANSPORTATION**

**IL RTE. 21 (MILWAUKEE AVE.) & HAWTHORN CENTER DR. #6 -CABLE PLAN**  
**SCHEDULE OF QUANTITIES, PHASE DESIGN. DIAGRAM & EVP SEQUENCE**  
 SCALE: N.T.S. SHEET NO. OF SHEETS STA. TO STA.

F.A. RTE.	SECTION	COUNTY	TOTAL SHEETS	SHEET NO.
	2012-003 I	LAKE	102	43
CONTRACT NO. 60T41				
ILLINOIS FED. AID PROJECT				

TS# 6720  
 VERNON HILLS