

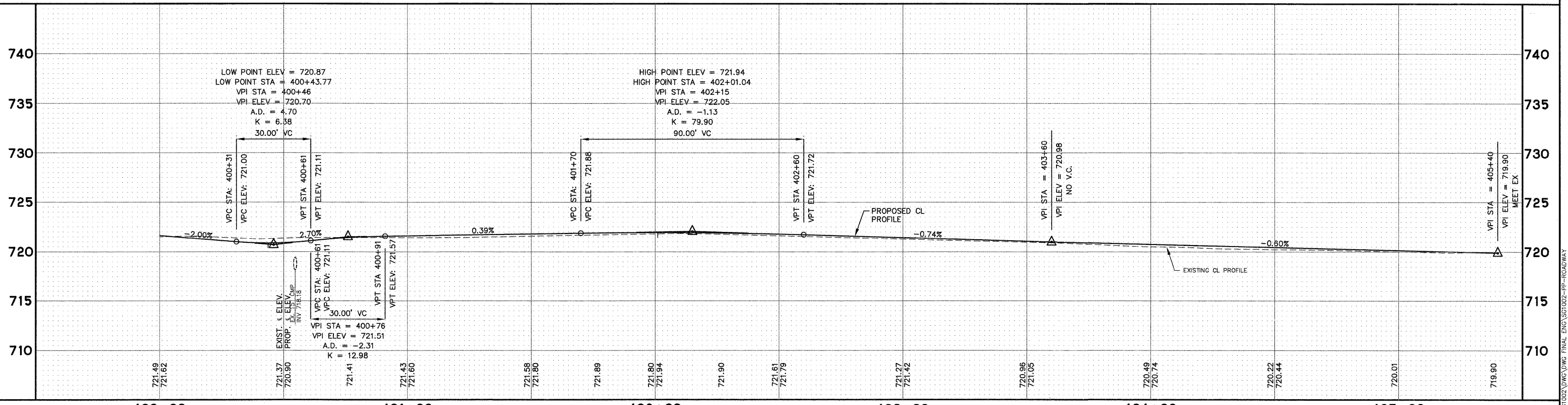
NOTE:
 1. THE GENERAL CONTRACTOR IS REQUIRED TO HIRE AN ENVIRONMENTAL FIRM WITH AT LEAST FIVE (5) DOCUMENTED LEAKING UNDERGROUND STORAGE TANK CLEANUPS OR THAT IS PRE-QUALIFIED IN HAZARDOUS WASTE BY THE DEPARTMENT TO REMEDIATE THE SOIL CONTAMINATION AND MONITOR FOR WORKER PROTECTION.

CURVE 7
 PI = 404+33.52
 PC = 404+03.36
 PT = 404+63.67
 D = 150°46'42"
 Δ = 90°55'41"
 R = 38'
 L = 60.31'
 T = 38.62'
 E = 16.18'

COMB. CONC. C&G TYPE M-2.12 (STA. 404+66 TO STA. 405+40) TRANSITION FROM B-6.12 TO M-2.12 IN 5 FEET
 COMB. CONC. C&G REMOVAL (STA. 403+20 TO STA. 405+40)

SCALE:
 HORIZONTAL 1" = 20'
 VERTICAL 1" = 5'

FRONTAGE ROAD



Plotted: February 20, 2012 @ 10:51 AM By: Kris Pung - Tab: 21 - Frontage_Profile - 22x34
 COPYRIGHT © 2012 ENGINEERING ENTERPRISES, INC.

Engineering Enterprises, Inc. CONSULTING ENGINEERS 52 Wheeler Road Sugar Grove, Illinois 60554 830.466.6700 / www.eeiweb.com		USER NAME = PLOT SCALE = PLOT DATE =	DESIGNED - DRAWN - CHECKED - DATE -	REVISED - REVISED - REVISED - REVISED -	STATE OF ILLINOIS DEPARTMENT OF TRANSPORTATION		FRONTAGE ROAD - PLAN AND PROFILE		F.A.P. RTE. = 326 SECTION = 10-0023-00-ES COUNTY = KANE TOTAL SHEETS = 70 SHEET NO. = 21 CONTRACT NO. 63700 FED. ROAD DIST. NO. 1 ILLINOIS FED. AID PROJECT NO. M-9003(717)
SCALE: 1"=20'					SHEET NO. 7 OF 7 SHEETS		STA. 400+00 TO STA. 404+60		