

CURVE 5
 PI = 300+75.87
 PC = 300+54.38
 PT = 300+97.36
 D = 27°29'58"
 Δ = 24°37'32"
 R = 100'
 L = 42.98'
 T = 21.83'
 E = 2.35'

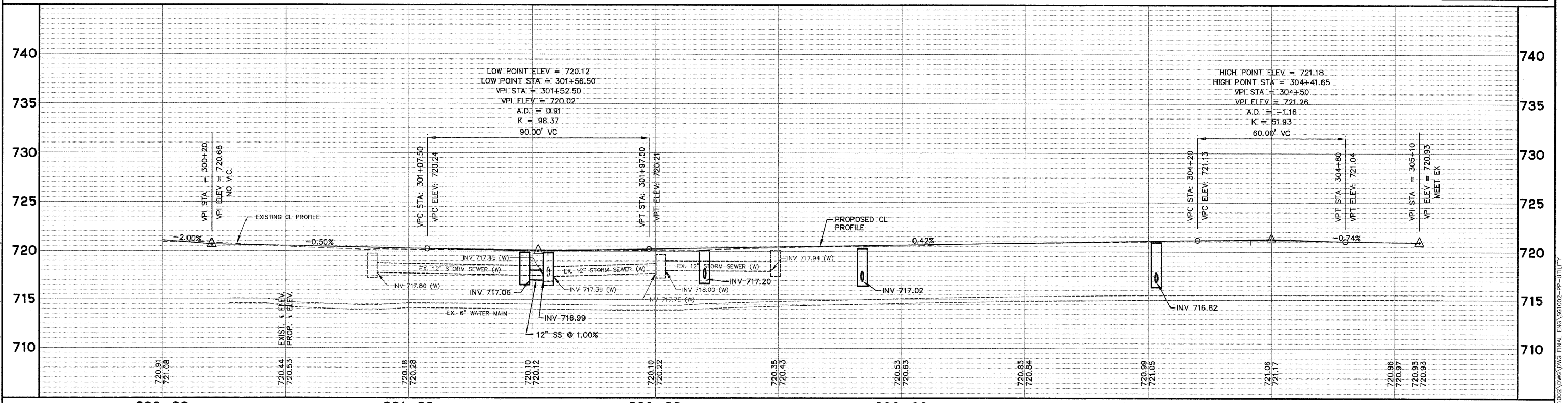
CURVE 6
 PI = 303+00.21
 PC = 302+80.26
 PT = 303+20.17
 D = 28°13'40"
 Δ = 81'
 R = 81'
 L = 39.19'
 T = 20.37'
 E = 2.52'

NOTE:
 1. THE GENERAL CONTRACTOR IS REQUIRED TO HIRE AN ENVIRONMENTAL FIRM WITH AT LEAST FIVE (5) DOCUMENTED LEAKING UNDERGROUND STORAGE TANK CLEANUPS OR THAT IS PRE-QUALIFIED IN HAZARDOUS WASTE BY THE DEPARTMENT TO REMEDIATE THE SOIL CONTAMINATION AND MONITOR FOR WORKER PROTECTION.

SEE IL ROUTE 47 UTILITY PLAN AND PROFILE SHEETS FOR ADDITIONAL ITEMS NOT INDICATED ON THIS SHEET

SUGAR LANE

SCALE:
 HORIZONTAL 1" = 20'
 VERTICAL 1" = 5'



Engineering Enterprises, Inc. CONSULTING ENGINEERS 52 Wheeler Road Sugar Grove, Illinois 60554 630.466.6700 / www.eeiweb.com		USER NAME = PLOT SCALE = PLOT DATE =	DESIGNED - DRAWN - CHECKED - DATE -	REVISED - REVISED - REVISED - REVISED -	STATE OF ILLINOIS DEPARTMENT OF TRANSPORTATION	SUGAR LANE - UTILITY PLAN AND PROFILE SCALE: 1"=20' SHEET NO. 5 OF 5 SHEETS STA. 300+00 TO STA. 304+80	F.A.P. RTE. 326 SECTION 10-00023-00-ES COUNTY KANE TOTAL SHEETS 70 SHEET NO. 29 CONTRACT NO. 63700 FED. ROAD DIST. NO. 1 ILLINOIS FED. AID PROJECT NO. M-9003(717)
--	--	--	--	--	---	--	---

Plotted: February 20, 2012 @ 10:56 AM By: Kris Ping - Tab: 29 - Sugar_Lane_Profile - 22x34
 Path: H:\SUGARLANE\SSG002\DWG\DWG_FINAL\ENG\SSG002-PP-UTILITY