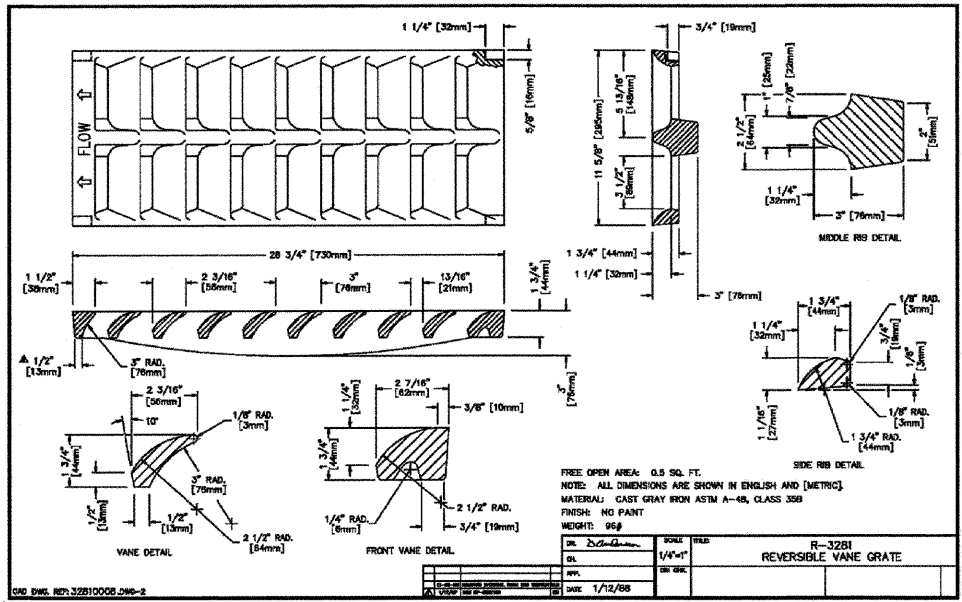
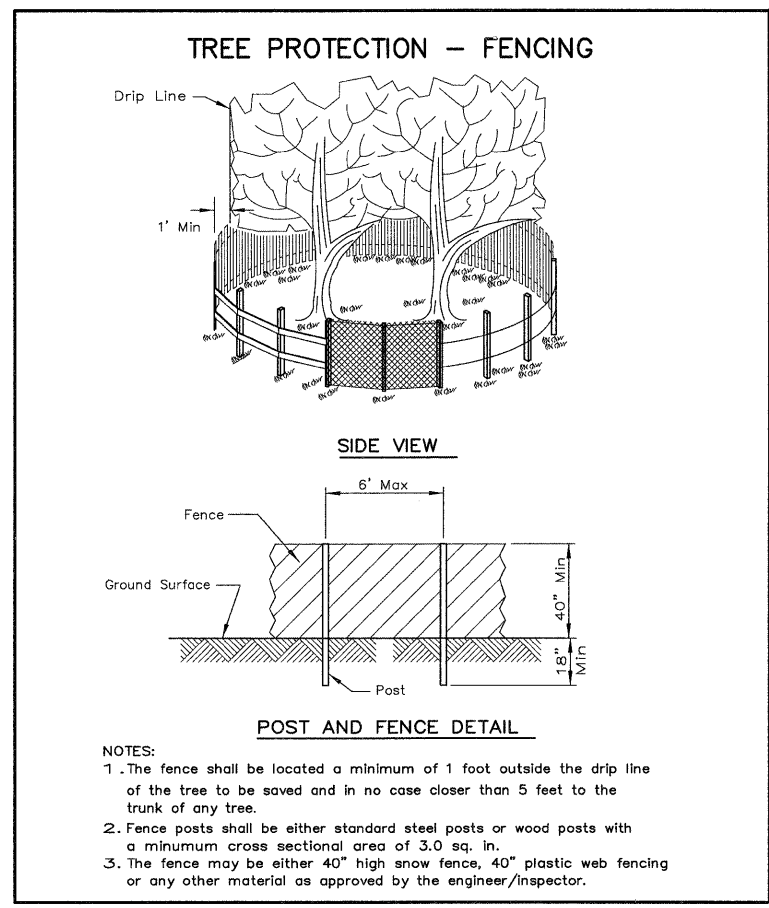
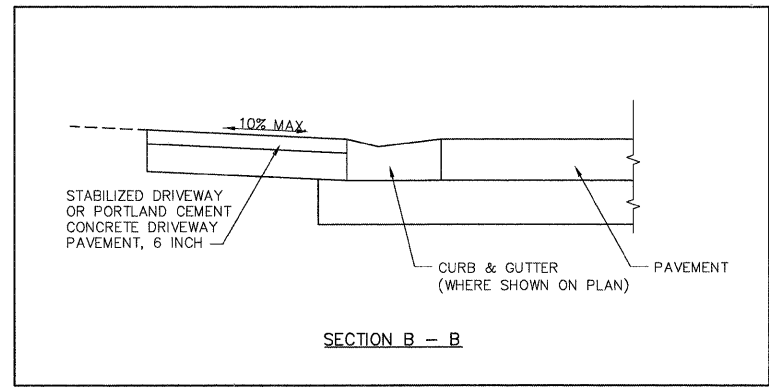
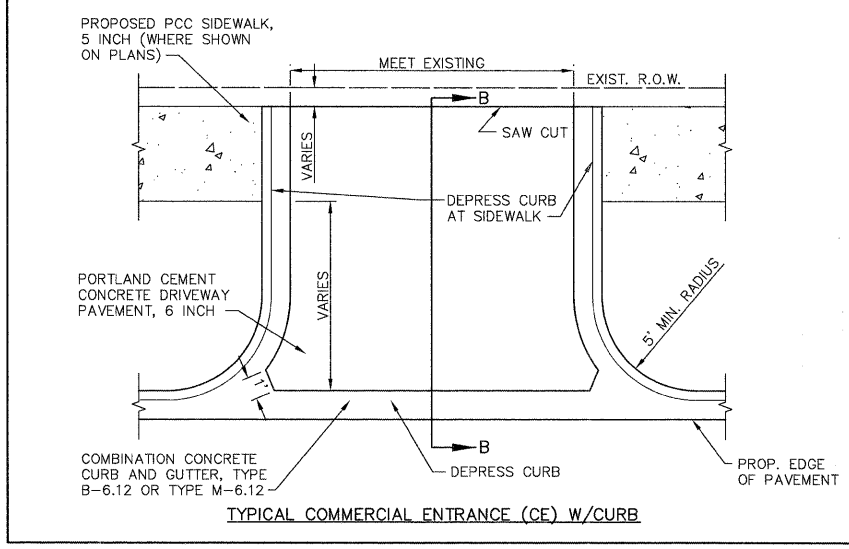
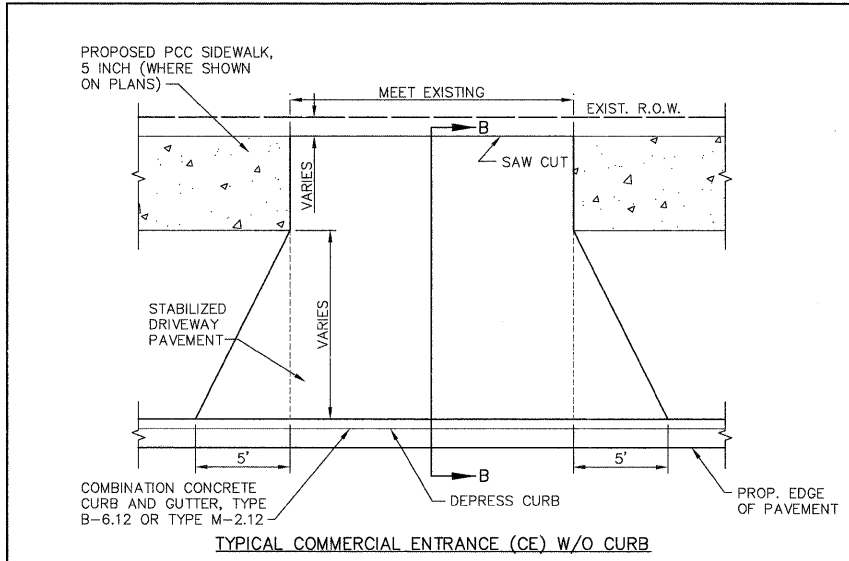
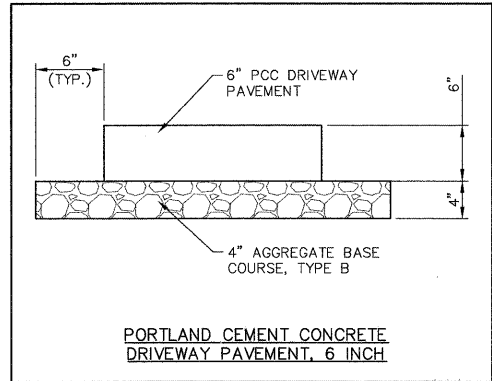
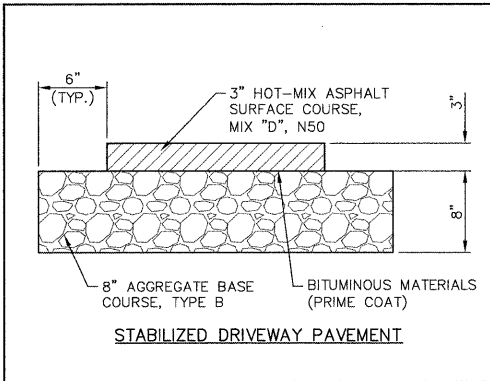
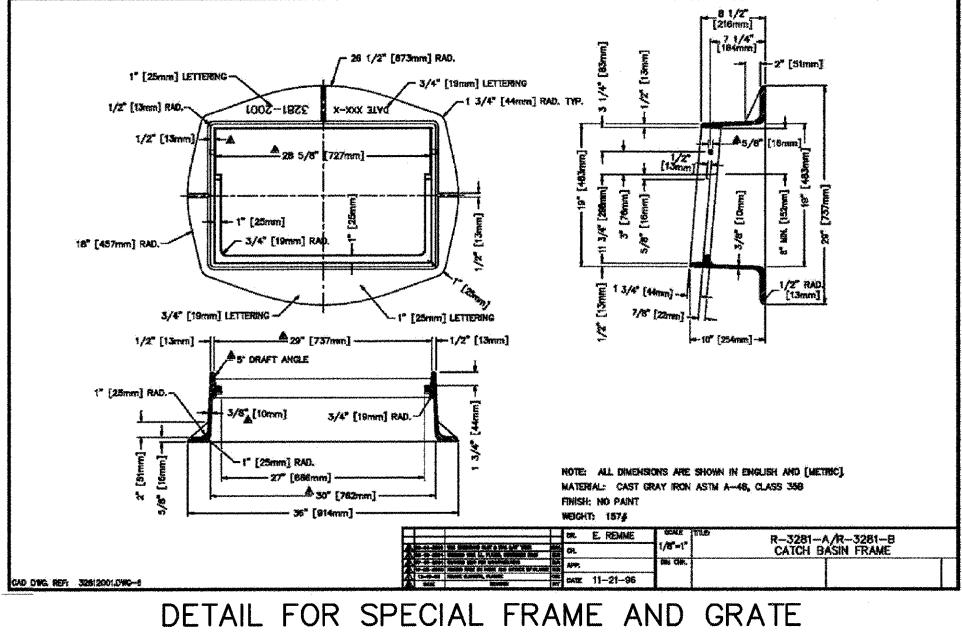


NOTE: MAT'L CAST GRAY IRON ASTM A-48, CLASS 35B  
FINISH UNPAINTED  
WEIGHT 52 LBS.  
TOTAL F. O. A. 77 SQ. IN.



FREE OPEN AREA: 63.5 SQ. FT.  
NOTE: ALL DIMENSIONS ARE SHOWN IN ENGLISH AND [METRIC]  
MATERIAL: CAST GRAY IRON ASTM A-48, CLASS 35B  
FINISH: NO PAINT  
WEIGHT: 96#

DR.	REV.	DATE	BY	CHK.	APP.
1/12/08					



NOTE: ALL DIMENSIONS ARE SHOWN IN ENGLISH AND [METRIC]  
MATERIAL: CAST GRAY IRON ASTM A-48, CLASS 35B  
FINISH: NO PAINT  
WEIGHT: 187#

DR.	REV.	DATE	BY	CHK.	APP.
11-21-08					

DETAIL FOR SPECIAL FRAME AND GRATE

Plotted: February 20, 2012 @ 10:43 AM By: Kris Pung - Tab: 57 SP Date: 2/2/12  
 Copyright © 2012 ENGINEERING ENTERPRISES, INC.

Engineering Enterprises, Inc.  
CONSULTING ENGINEERS  
52 Wheeler Road  
Sugar Grove, Illinois 60554  
630.466.6700 / www.eeiweb.com

USER NAME =	DESIGNED -	REVISED -
PLOT SCALE =	DRAWN -	REVISED -
PLOT DATE =	CHECKED -	REVISED -
	DATE -	REVISED -

STATE OF ILLINOIS  
DEPARTMENT OF TRANSPORTATION

SPECIAL DETAILS

SCALE: N/A SHEET NO. 1 OF 2 SHEETS STA. N/A TO STA. N/A

F.A.P. RTE.	SECTION	COUNTY	TOTAL SHEETS	SHEET NO.
326	10-00023-00-ES	KANE	70	57
FED. ROAD DIST. NO. 1 ILLINOIS			CONTRACT NO. 63700	
FED. AID PROJECT NO. M-9003(717)				

Path: H:\S&B\PROJ\10-0023\DWG\DWG\_FINAL\_ENG\SG002-DETAILS