

Plotted: February 20, 2012 @ 11:01 AM By: Kris Pung - Tab: 64 - Cross Section - 22x34

Engineering Enterprises, Inc.
 CONSULTING ENGINEERS
 52 Wheeler Road
 Sugar Grove, Illinois 60554
 630.466.8700 / www.eeiweb.com

USER NAME =
 PLOT SCALE =
 PLOT DATE =

DESIGNED -
 DRAWN -
 CHECKED -
 DATE -

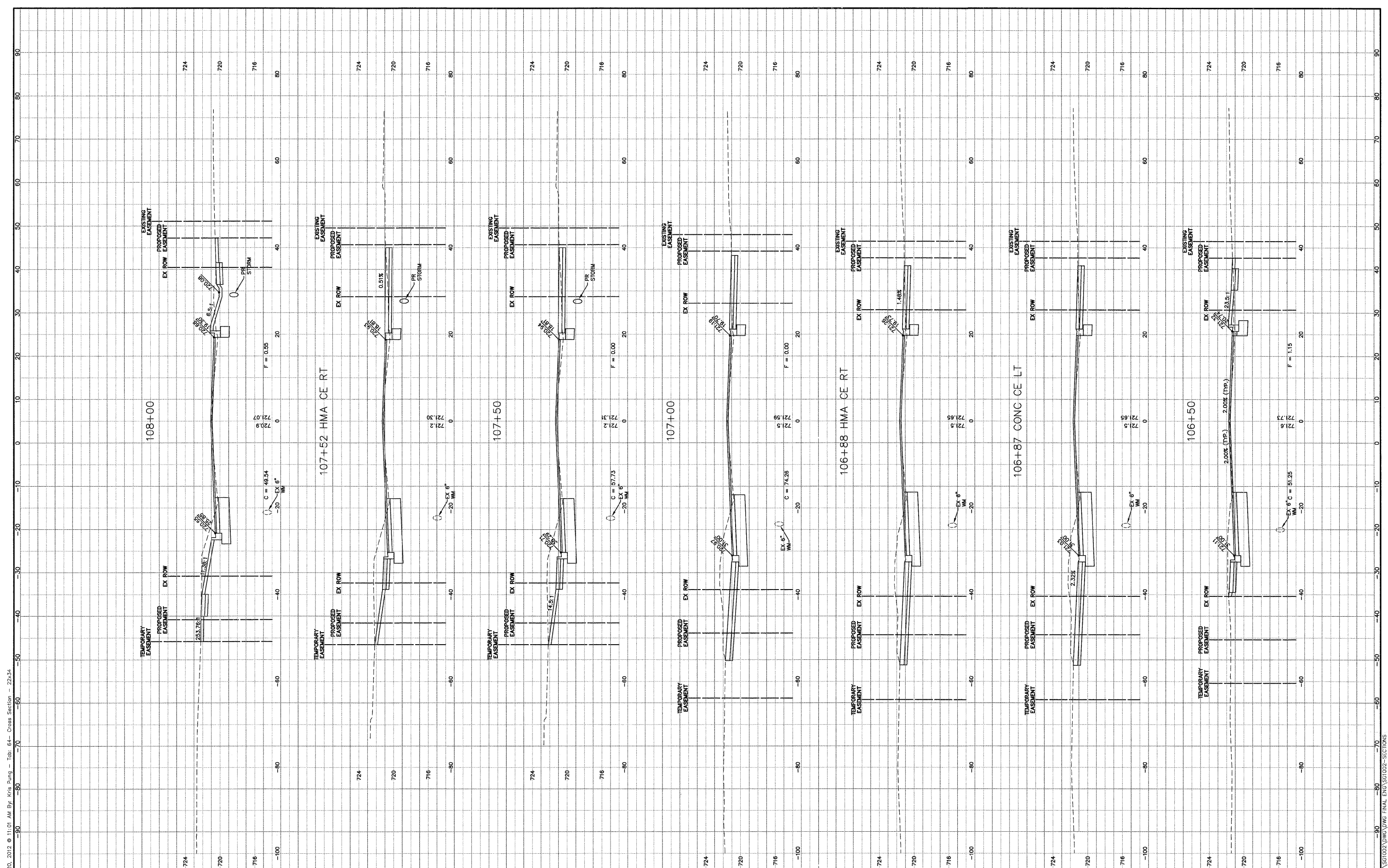
REVISED -
 REVISED -
 REVISED -
 REVISED -

STATE OF ILLINOIS
 DEPARTMENT OF TRANSPORTATION

CROSS STREET - CROSS SECTIONS

SCALE: H¹/V¹⁰ - V¹/H⁵ SHEET NO. 6 OF 12 SHEETS STA. 106+50 TO STA. 108+00

F.A.P. RTE. 326	SECTION 10-00023-00-ES	COUNTY KANE	TOTAL SHEETS 70	SHEET NO. 64
FED. ROAD DIST. NO. 1 ILLINOIS		FED. AID PROJECT NO. M-9003(717)		
CONTRACT NO. 63700				



Path: H:\53536\PROJ\SG1002\DWG\DWG_FINAL\ENG\SG1002-SECTION6