

06-15-12 LETTING ITEM 145

STATE OF ILLINOIS
DEPARTMENT OF TRANSPORTATION

DIVISION OF HIGHWAYS
PLANS FOR PROPOSED
FEDERAL AID PROJECT
GLEN ELLYN ROAD BIKE TRAIL

GREGORY AVENUE TO NOW FOODS DRIVEWAY

SECTION NO. 08-F3000-10-BT

PROJECT NO. SRTS-4008(027)

FOREST PRESERVE DISTRICT OF DUPAGE COUNTY

DUPAGE COUNTY

JOB NO: C-91-008-08

F.A. RTE.	SECTION	COUNTY	TOTAL SHEETS	SHEET NO.
	08-F3000-10-BT	DUPAGE	20	1
FED. ROAD DIST. NO.	ILLINOIS	CONTRACT NO. 63710		

JUNE 2012 LETTING

INDEX OF SHEETS

SHEET NO.	DESCRIPTION
1	COVER
2	GENERAL NOTES AND STANDARDS
3	SUMMARY OF QUANTITIES / SCHEDULES
4	TYPICAL SECTIONS
5-6	PROPOSED PLAN & PROFILE
7-9	CONSTRUCTION DETAILS AND STANDARDS
10-12	DISTRICT ONE STANDARDS
13-20	CROSS SECTIONS

PROJECT LOCATED IN
VILLAGE OF GLENDALE HEIGHTS

DESIGN SPEED

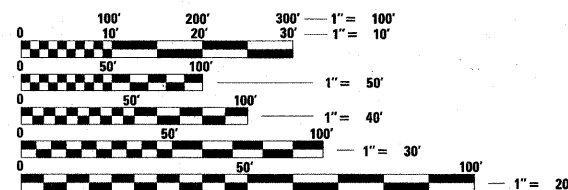
20 MPH

CLASSIFICATION

BIKE TRAIL

SPONSORING AGENCY

FOREST PRESERVE DISTRICT
OF DUPAGE COUNTY



FULL SIZE PLANS HAVE BEEN PREPARED USING STANDARD ENGINEERING SCALES. REDUCED SIZED PLANS WILL NOT CONFORM TO STANDARD SCALES. IN MAKING MEASUREMENTS ON REDUCED PLANS, THE ABOVE SCALES MAY BE USED.

J.U.L.I.E.
JOINT UTILITY LOCATION INFORMATION FOR EXCAVATION
1-800-892-0123 (JULIE)
OR 811

CONTRACT NO. 63710



STATE OF ILLINOIS
DEPARTMENT OF TRANSPORTATION
DIVISION OF HIGHWAYS

Approved *April 4* 20 12
[Signature]
FOREST PRESERVE DISTRICT OF DUPAGE COUNTY

Passed APRIL 10 20 12
[Signature] C. HOLT
DISTRICT #1 ENGINEER OF LOCAL ROADS AND STREETS

Releasing for Bid
Based on Limited
Review APRIL 10, 20 12
[Signature] Diana M. O'Keefe
DEPUTY DIRECTOR OF HIGHWAYS, REGION #1 ENGINEER

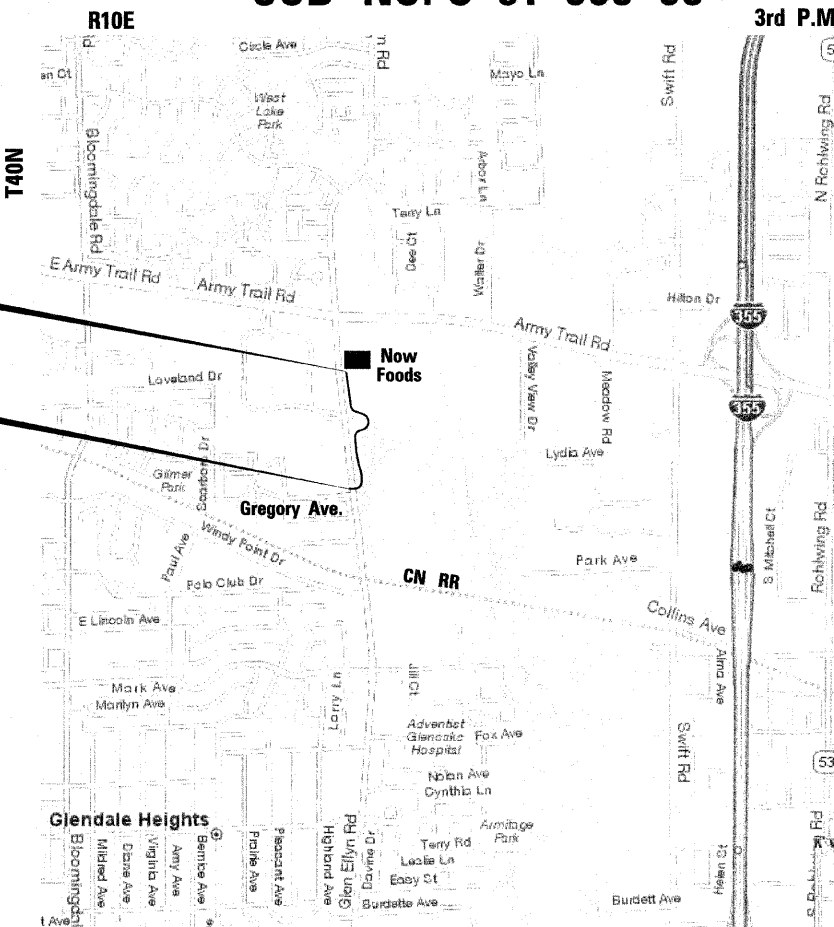
PRINTED BY THE AUTHORITY
OF THE STATE OF ILLINOIS

PLANS PREPARED BY:

URS

100 SOUTH WACKER DRIVE, SUITE 500
CHICAGO, IL 60606
TEL (312) 939-1000
FAX (312) 939-4198

PROGRAM AND OFFICE ENGINEER: CHARLES F. RIDDLE, P.E. 847-705-4406, SCHAUMBURG, IL



Bloomingdale Township

LOCATION MAP
(NOT TO SCALE)

GROSS LENGTH AND NET LENGTH = 2,075.68 FEET (0.39 MILES)

LICENSED PROFESSIONAL ENGINEER
DAVID D. LANDEWEER
062.042363
STATE OF ILLINOIS
[Signature]
4/10/12
DATE
LICENSE EXPIRES 11/30/2013

PLAN NOTES

GENERAL NOTES BEFORE STARTING ANY EXCAVATION, THE CONTRACTOR SHALL CALL "JULIE" AT 800-892-0123 FOR FIELD LOCATIONS OF BURIED UTILITY FACILITIES. (48 HOURS NOTIFICATION IS REQUIRED).
ALL STATION-OFFSET CALL OUTS AND CURVE DATA ON THE PLANS REFER TO THE PROPOSED CENTERLINE UNLESS OTHERWISE SHOWN.
IT IS THE CONTRACTORS RESPONSIBILITY TO VERIFY ALL DIMENSIONS

SPECIFICATIONS ALL CONSTRUCTION SHALL BE DONE IN ACCORDANCE WITH THE "STANDARD SPECIFICATIONS FOR ROAD AND BRIDGE CONSTRUCTION", ADOPTED JANUARY 1, 2012, THE "STANDARD SPECIFICATIONS FOR WATER AND SEWER CONSTRUCTION IN ILLINOIS", JULY 2009 EDITION, THE "MANUAL ON UNIFORM TRAFFIC CONTROL DEVICES FOR STREETS AND HIGHWAYS", LATEST EDITION, THE DETAILS INCLUDED IN THE PLANS, AND THE SPECIAL PROVISIONS INCLUDED IN THE CONTRACT DOCUMENTS.

STANDARDS ANY REFERENCE TO "STANDARDS" THROUGHOUT THE PLANS OR SPECIAL PROVISIONS SHALL BE INTERPRETED TO BE THE STANDARD OF IDOT AS LISTED ON THIS SHEET.

COORDINATION THE CONTRACTOR SHALL NOTIFY THE FOREST PRESERVE DISTRICT OF DUPAGE COUNTY (630-871-6404) AT LEAST 48 HOURS IN ADVANCE OF BEGINNING WORK, AND SHALL COORDINATE ALL CONSTRUCTION OPERATIONS WITH THE ENGINEER.

PUBLIC OR PRIVATE UTILITIES THE LOCATIONS OF PUBLIC OR PRIVATE UTILITIES SHOWN ON THE PLANS ARE APPROXIMATE, AND THE ENGINEER DOES NOT GUARANTEE THEIR ACCURACY. THE CONTRACTOR WILL BE REQUIRED TO ASCERTAIN THE EXACT LOCATIONS OF SUCH UTILITIES AND EXERCISE CARE DURING CONSTRUCTION OPERATIONS SO AS NOT TO DAMAGE THEM, IN ACCORDANCE WITH THE SPECIAL PROVISIONS AND ARTICLE 107.20 OF THE "STANDARD SPECIFICATIONS". THE CONTRACTOR SHALL BE RESPONSIBLE FOR CONTACTING THE UTILITY OWNERS SO THAT THEIR FACILITIES MAY BE ADJUSTED OR RELOCATED, IF NECESSARY, PRIOR TO THE START OF CONSTRUCTION OPERATIONS UNLESS OTHERWISE NOTED IN THE PLANS. ALL RELOCATION WORK ON EXISTING PRIVATE UTILITIES WILL BE DONE BY THE OWNER OF THAT UTILITY.
THE CONTRACTOR SHALL BE RESPONSIBLE FOR ANY DAMAGE OR DESTRUCTION OF PUBLIC OR PRIVATE PROPERTY, AND SHALL RESTORE SUCH PROPERTY AT HIS/HER OWN EXPENSE.

SURVEY MONUMENTS THE CONTRACTOR SHALL PROTECT AND CAREFULLY PRESERVE ALL SECTION OR SUBSECTION MONUMENTS OR PROPERTY OR REFERENCE MARKERS UNTIL THE OWNER, HIS AGENT OR AN AUTHORIZED SURVEYOR HAS WITNESSED OR OTHERWISE REFERENCED THEIR LOCATIONS.
WHERE SECTION OR SUBSECTION MONUMENTS ARE ENCOUNTERED, THE ENGINEER SHALL BE NOTIFIED BEFORE MONUMENTS ARE REMOVED.

DISPOSAL OF MATERIALS THE CONTRACTOR WILL BE REQUIRED TO DISPOSE OF ALL SIDEWALK, CURB AND GUTTER, PAVEMENT, AND ALL OTHER MATERIALS EXCAVATED OR REMOVED DUE TO CONSTRUCTION OPERATIONS, AT HIS EXPENSE. NO PAYMENT WILL BE MADE FOR HAULING OR TRUCKING MATERIAL TO LOCATIONS, PROVIDED BY THE CONTRACTOR, OUTSIDE THE LIMITS OF THE IMPROVEMENT.

EXISTING DRAINAGE STRUCTURES DURING CONSTRUCTION OPERATIONS, WHENEVER ANY LOOSE MATERIAL IS DEPOSITED IN THE FLOW LINE OF DRAINAGE STRUCTURES, SUCH THAT THE NATURAL FLOW OF WATER IS OBSTRUCTED, IT SHALL BE REMOVED BY THE CONTRACTOR AT THE CLOSE OF EACH WORKING DAY. AT THE CONCLUSION OF CONSTRUCTION OPERATIONS, ALL DRAINAGE STRUCTURES SHALL BE FREE FROM DIRT AND DEBRIS. THE WORK SPECIFIED ABOVE WILL NOT BE PAID FOR SEPARATELY, BUT SHALL BE INCLUDED IN THE CONTRACT AND WILL NOT BE PAID AS A SEPARATE ITEM.
WHEN EXISTING DRAINAGE FACILITIES ARE DISTURBED, THE CONTRACTOR SHALL PROVIDE AND MAINTAIN TEMPORARY OUTLETS AND CONNECTIONS FOR ALL PRIVATE OR PUBLIC DRAINS, SEWERS OR CATCH BASINS. HE SHALL PROVIDE FACILITIES TO TAKE IN ALL STORM WATER WHICH WILL BE RECEIVED BY THESE DRAINS AND SEWERS, AND DISCHARGE SAME. HE SHALL PROVIDE AND MAINTAIN AN EFFICIENT PUMPING PLANT, IF NECESSARY, AND A TEMPORARY OUTLET, AND BE PREPARED AT ALL TIMES TO DISPOSE OF THE WATER RECEIVED FROM THESE TEMPORARY CONNECTIONS UNTIL SUCH TIME AS THE PERMANENT CONNECTIONS WITH SEWERS ARE BUILT AND IN SERVICE. THIS WORK WILL NOT BE PAID FOR DIRECTLY, BUT SHALL BE INCLUDED IN THE CONTRACT.

UNSUITABLE MATERIAL BEFORE REMOVAL OF ANY UNSUITABLE MATERIAL, THE CONTRACTOR SHALL TREAT THE SUBGRADE AS PER ARTICLE 301.03 OF THE "STANDARD SPECIFICATIONS" TO THE SATISFACTION OF THE ENGINEER. UNSUITABLE MATERIAL SHALL NOT BE USED AS EMBANKMENT OR FILL UNDER THE PROPOSED PATH AS SHOWN ON THE TYPICAL CROSS SECTIONS.

STOCKPILES STOCKPILES OF TOPSOIL AND OTHER MATERIALS SHALL NOT BE LOCATED WITHIN A SPECIAL MANAGEMENT AREA. APPROVAL OF THE LOCATION MUST BE OBTAINED FROM THE ENGINEER PRIOR TO PLACEMENT. IF A STOCKPILE IS TO REMAIN IN PLACE FOR MORE THAN THREE DAYS, THE EROSION CONTROL MEASURES SHALL BE PROVIDED. STOCKPILES TO REMAIN IN PLACE FOR 30 DAYS OR MORE SHALL RECEIVE TEMPORARY SEEDING.

TREE TRIMMING ALL TREE BRANCHES THAT ARE LESS THAN 20 FEET ABOVE THE SURFACE OF THE TRAIL SHALL BE REMOVED BY THE CONTRACTOR. THE CONTRACTOR SHALL PERFORM THE WORK IN ACCORDANCE WITH ARTICLE 201.05(c) FOR WOODY PLANT MAINTENANCE, TREE CARE OPERATIONS PRUNING, TRIMMING, REPAIRING, MAINTAINING AND REMOVING TREES AND CUTTING BRUSH. THIS WORK SHALL BE INCLUDED IN THE COST OF MOBILIZATION AND WILL NOT BE PAID FOR AS SEPARATE ITEMS.

ACCESS TO ABUTTING PROPERTY THE CONTRACTOR SHALL MAINTAIN ACCESS TO ABUTTING PROPERTY DURING THE CONSTRUCTION OF THIS PROJECT, EXCEPT FOR PERIODS OF SHORT DURATION AS APPROVED BY THE ENGINEER.

SAW CUTTING THE LIMITS OF REMOVAL OF ALL CONCRETE OR BITUMINOUS PAVEMENTS, CURBING OR SIDEWALK ADJACENT TO EXISTING LIKE PAVEMENTS, CURBING OR SIDEWALKS SHALL BE SAWCUT IN ACCORDANCE WITH SECTION 440 OF THE "STANDARD SPECIFICATIONS" AND AT THE DIRECTION OF THE ENGINEER. THE SAW CUTTING OF BITUMINOUS PAVEMENT, DRIVEWAYS, CURBING OR SIDEWALK SHALL BE INCLUDED IN THE CONTRACT AND WILL NOT BE PAID FOR AS SEPARATE ITEMS.

SIDEWALKS SIDEWALK RAMPS FOR THE HANDICAPPED SHALL BE PROVIDED AT ALL ROADWAY AND CURBED DRIVEWAY INTERSECTIONS AS SHOWN IN THE STANDARDS.
ADJACENT PAVEMENT OR SIDEWALK DISTURBED DURING CONSTRUCTION SHALL BE RESTORED TO THE ORIGINAL CONDITION BY THE CONTRACTOR. THE COST FOR THIS WORK SHALL BE INCLUDED IN THE CONTRACT.

HIGHWAY STANDARDS

- 000001-06 STANDARD SYMBOLS, ABBREVIATIONS AND PATERNS
- 280001-06 TEMPORARY EROSION CONTROL SYSTEMS
- 424001-06 PURPENDICULAR CURB RAMPS FOR SIDEWALKS
- 542301-03 PRECAST REINFORCED CONCRETE FLARED END SECTION
- 606001-04 CONCRETE CURB TYPE B & COMBINATION CONCRETE CURB AND GUTTER
- 701701-08 URBAN LANE CLOSURE MULTILANE INTERSECTION
- 701801-05 SIDEWALK CLOSURE OR CROSSWALK CLOSURE
- 701901-02 TRAFFIC CONTROL DEVICES
- 720001-01 SIGN PANEL MOUNTING DETAILS
- 720006-03 SIGN PANEL ERECTION DETAILS
- 720011-01 METAL POSTS FOR SIGNS, MARKERS & DELINEATORS
- 729001-01 APPLICATION OF TYPE A AND B METAL POSTS (FOR SIGNS & MARKERS)

DUPAGE COUNTY DIVISION OF TRANSPORTATION

1. DAILY LANE CLOSURES WITHIN COUNTY RIGHTS OF WAY ARE PERMITTED BETWEEN 9:00 AM AND 4:00 PM ONLY. TRAFFIC CONTROL SHALL CONFORM TO IDOT'S HIGHWAY STANDARDS AND THE MANUAL FOR UNIFORM TRAFFIC CONTROL DEVICES AT ALL TIMES DURING CONSTRUCTION. TRAFFIC CONTROL SHALL INCLUDE ADVANCE WARNING LANE CLOSURE SIGNAGE, AN ARROW BOARD AND TYPE I BARRICADES WITH STEADY BURN LIGHTS AND SANDBAGS AS IS APPLICABLE. LANE CLOSURES ARE NOT PERMITTED ON COUNTY ROADWAYS DURING SNOWFALL OR WITHIN 2 HOURS PRIOR TO PREDICTED SNOWFALL OR PRECIPITATION CONDITIONS BETWEEN NOVEMBER 15TH AND APRIL 15TH FOR MAINTENANCE OF THE ROADWAY PAVEMENT BY COUNTY HIGHWAY MAINTENANCE DEPARTMENT STAFF AND EQUIPMENT.
2. DISTURBED AREAS OF THE COUNTY'S RIGHT-OF-WAY SHALL BE DRESSED WITH A MINIMUM OF 6" TOPSOIL AND IDOT CLASS 2A SEED (WITH EROSION CONTROL BLANKET OR HYDROSEEDING) OR SOD (SALT TOLERANT AND STAKED IN PLACE).
3. EROSION CONTROL MEASURES SHALL COMPLY WITH THE MINIMUM REQUIREMENTS OF THE DUPAGE COUNTY STORM WATER AND FLOODPLAIN ORDINANCE (LATEST EDITION/REVISION) SPECIFICATIONS AT ALL TIMES.
4. PAVEMENT, CURB/GUTTER AND STORM STRUCTURES SHALL BE MAINTAINED FREE OF MUD/DEBRIS AT ALL TIMES AND SHALL BE CLEANED AS IS REQUIRED AND/OR AS COORDINATED WITH DUPAGE COUNTY.
5. EQUIPMENT AND MATERIALS MAY NOT BE STORED WITHIN THE COUNTY'S RIGHT-OF-WAY.
6. CONTACT DUPAGE COUNTY (630-407-6900) A MINIMUM OF 48 HOURS PRIOR TO THE START OF CONSTRUCTION, TO ARRANGE FOR INSPECTIONS AND AT THE COMPLETION OF THE DESCRIBED WORK.
7. OPEN-CUTTING OF THE COUNTY'S ROADWAY PAVEMENT IS STRICTLY PROHIBITED WITHOUT THE EXPRESS WRITTEN PERMISSION OF THE COUNTY ENGINEER OR THE DULY AUTHORIZED ASSIGN.

SEDIMENTATION AND EROSION CONTROL NOTES

- A. SOIL DISTURBANCE SHALL BE CONDUCTED IN SUCH A MANNER AS TO MINIMIZE EROSION. SOIL STABILIZATION MEASURES SHALL CONSIDER THE TIME OF YEAR, SITE CONDITIONS AND THE USE OF TEMPORARY OR PERMANENT MEASURES.
- B. SOIL EROSION AND SEDIMENT CONTROL FEATURES SHALL BE CONSTRUCTED PRIOR TO THE COMMENCEMENT OF UPLAND DISTURBANCE.
- C. TEMPORARY SOIL STABILIZATION SHALL BE APPLIED TO DISTURBED AREAS WITHIN 14 CALENDAR DAYS OF THE END OF ACTIVE HYDROLOGIC DISTURBANCE. PERMANENT STABILIZATION SHALL BE DONE WITHIN 14 DAYS AFTER COMPLETION OF FINAL GRADING OF THE SOIL.
- D. ALL STORM SEWER FACILITIES THAT ARE OR WILL BE FUNCTIONING DURING CONSTRUCTION SHALL BE PROTECTED, FILTERED, OR OTHERWISE TREATED TO REMOVE SEDIMENT.
- E. ALL TEMPORARY EROSION AND SEDIMENT CONTROL MEASURES SHALL BE REMOVED WITHIN 30 DAYS AFTER FINAL SITE STABILIZATION IS ACHIEVED OR AFTER THE TEMPORARY MEASURES ARE NO LONGER NEEDED. TRAPPED SEDIMENT AND OTHER DISTURBED SOIL AREAS SHALL BE PERMANENTLY STABILIZED.
- F. ALL TEMPORARY AND PERMANENT EROSION CONTROL MEASURES MUST BE MAINTAINED AND REPAIRED AS NEEDED. THE GENERAL CONTRACTOR WILL BE RESPONSIBLE FOR INSPECTION AND REPAIR DURING CONSTRUCTION.
- G. THE EROSION CONTROL MEASURES INDICATED ON THE PLANS ARE THE MINIMUM REQUIREMENTS. ADDITIONAL MEASURES MAY BE REQUIRED, AS DIRECTED BY THE ENGINEER OR GOVERNING AGENCY.
- H. THE CONTRACTOR SHALL INSTALL ALL EROSION CONTROL PRIOR TO THE START OF ANY EARTHWORK.
- I. IF A STOCKPILE IS TO REMAIN IN PLACE FOR MORE THAN THREE DAYS, EROSION CONTROL MEASURES SHALL BE PROVIDED.
- J. EROSION CONTROL MEASURES SHALL COMPLY WITH THE MINIMUM REQUIREMENTS OF THE DUPAGE COUNTY STORMWATER AND FLOODPLAIN ORDINANCE SPECIFICATIONS AT ALL TIMES.
- K. EROSION CONTROL BLANKET SHALL BE INSTALLED IN LOW CHANNEL OF DETENTION PONDS AND AFTER FINAL GRADING, AND SEEDING OF SITE.

VILLAGE OF GLENDALE HEIGHTS BM 30

FIRE HYDRANT ON THE WEST SIDE OF GLEN ELLYN ROAD; NORTH-NORTHWEST BONNET BOLT ON SECOND FIRE HYDRANT NORTH OF GREGORY AVENUE

EL=747.47

DUPAGE COUNTY BM BL27001

BRONZE DISK AT THE NORTHEAST CORNER WINGWALL OF BLOOMINGDALE ROAD BRIDGE OVER THE CN RAILROAD STAMPED "DUPAGE COUNTY MAPS AND PLATS"

EL=807.3717

VERTICAL DATUM USED IS NGVD 29.

CONSTRUCTION ACCESS LOCATIONS

THE CONSTRUCTION ACCESS LOCATIONS SHALL BE ALLOWED ONLY ALONG THE PROPOSED TRAIL WHERE IT MEETS EXISTING ROADS AND DRIVES.

COMMITMENT

DUE TO A PROFESSIONAL GOLF ASSOCIATION EVENT AT A NEARBY SITE, TEMPORARY FAN PARKING AND ACCESS INTO THE FOREST PRESERVE WILL BE CONSTRUCTED BY OTHERS BEGINNING IN MID-AUGUST, 2012. IN ADDITION, NO WORK WILL BE ALLOWED THE WEEK OF THE EVENT, SEPTEMBER 25-30.

FILE NAME = #FILE#



USER NAME = #USER#	DESIGNED <i>JIF</i>	REVISED -
	DRAWN <i>KJB</i>	REVISED -
PLOT SCALE = #SCALE#	CHECKED <i>DDL</i>	REVISED -
PLOT DATE = #DATE#	DATE 4/10/12	REVISED -

**ILLINOIS DEPARTMENT OF TRANSPORTATION
DIVISION OF HIGHWAYS**

**GENERAL NOTES
AND STANDARDS**

SHEET NO. 1 OF 1 SHEETS

F.A.P. RTE.	SECTION	COUNTY	TOTAL SHEETS	SHEET NO.
	08-F3000-10-BT	DUPAGE	20	2
CONTRACT NO. 63710				
FED. ROAD DIST. NO. 1 ILLINOIS FED. AID PROJECT				

EARTHWORK SCHEDULE

SUITABLE EXCAVATION (EARTH EXCAVATION)	EARTH EXCAVATION ADJUSTED FOR SHRINKAGE	SUITABLE EMBANKMENT	EARTHWORK BALANCE WASTE (+) OR SHORTAGE (-) (FURNISHED EXCAVATION)
CU YD	CU YD	CU YD	CU YD
469	352	616	-264

TREE REMOVAL SCHEDULE

LOCATION			6 TO 15 UNITS	OVER 15 UNITS
STATION	OFFSET	DIAMETER	DIAMETER	DIAMETER
114+00		20	15	
114+10		15	15	
114+20		10		17
114+40		10	7	
114+45		8	15	
114+60		6		20
114+65	3		15	
114+68	0		15	
114+80	12			17
114+85	5		10	
115+04	0		12	
115+00		18		18
115+15		10	15	
115+18		15	10	
115+22		9	12	

SUMMARY OF QUANTITIES

CODE NO.	ITEM	UNIT	TOTAL QUANTITY 0028
20100110	TREE REMOVAL (6 TO 15 UNITS DIAMETER)	UNIT	141
20100210	TREE REMOVAL (OVER 15 UNITS DIAMETER)	UNIT	72
20101100	TREE TRUNK PROTECTION	EACH	3
20200100	EARTH EXCAVATION	CU YD	469
20201200	REMOVAL AND DISPOSAL OF UNSUITABLE MATERIAL	CU YD	1,419
20400800	FURNISHED EXCAVATION	CU YD	264
21001000	GEOTECHNICAL FABRIC FOR GROUND STABILIZATION	SQ YD	2,591
21101625	TOPSOIL FURNISH AND PLACE, 6"	SQ YD	4,350
25000210	SEEDING, CLASS 2A	ACRE	0.1
25000400	NITROGEN FERTILIZER NUTRIENT	POUND	103
25000500	PHOSPHORUS FERTILIZER NUTRIENT	POUND	103
25000600	POTASSIUM FERTILIZER NUTRIENT	POUND	103
25100630	EROSION CONTROL BLANKET	SQ YD	5538
28000305	TEMPORARY DITCH CHECKS	FOOT	150
28000400	PERIMETER EROSION BARRIER	FOOT	4120
28000500	INLET AND PIPE PROTECTION	EACH	4
28100103	STONE RIPRAP, CLASS A2	SQ YD	31
28200200	FILTER FABRIC	SQ YD	2,396
35102000	AGGREGATE BASE COURSE, TYPE B 8"	SQ YD	2396
40603335	HOT-MIX ASPHALT SURFACE COURSE, MIX "D", N50	TON	244
42001300	PROTECTIVE COAT	SQ YD	32
42400300	PORTLAND CEMENT CONCRETE SIDEWALK 6 INCH	SQ FT	222
42400800	DETECTABLE WARNINGS	SQ FT	80
542C0217	PIPE CULVERTS, CLASS C, TYPE 1 12"	FOOT	96
542C0235	PIPE CULVERTS, CLASS C, TYPE 1 30"	FOOT	45
54215547	METAL END SECTIONS 12"	EACH	8
54215565	METAL END SECTIONS 30"	EACH	2
67100100	MOBILIZATION	L SUM	1
70102635	TRAFFIC CONTROL AND PROTECTION, STANDARD 701701	L SUM	1
70102640	TRAFFIC CONTROL AND PROTECTION, STANDARD 701801	L SUM	1
* 72000100	SIGN PANEL - TYPE 1	SQ FT	28.0
* 72900100	METAL POST - TYPE A	FOOT	20
* 78000600	THERMOPLASTIC PAVEMENT MARKING - LINE 12"	FOOT	300
* 78001110	PAINT PAVEMENT MARKING - LINE 4"	FOOT	1,985
* X0321322	DROP GATE	EACH	4
* XX007920	LANDSCAPING STONE	TON	4

CODE NO.	ITEM	UNIT	TOTAL QUANTITY 0028
* A2005120	TREE, JUGLANS NIGRA (BLACK WALNUT), 2-1/2" CALIPER, BALLED AND BURLAPPED	EACH	1
* A2006520	TREE, QUERCUS BICOLOR (SWAMP WHITE OAK), 2-1/2" CALIPER, BALLED AND BURLAPPED	EACH	2
* A2006720	TREE, QUERCUS MACROCARPA (BUR OAK), 2-1/2" CALIPER, BALLED AND BURLAPPED	EACH	2
* A2007820	TREE, TLIA AMERICANA (AMERICAN LINDEN/BASSWOOD), 2-1/2" CALIPER, BALLED AND BURLAPPED	EACH	5
* B2000900	TREE, AMELANCHIER ARBOREA (DOWNY SERVICEBERRY), 6' HEIGHT, CLUMP FORM, BALLED AND BURLAPPED	EACH	3
* B2001164	TREE, CERCIS CANADENSIS (EASTERN REDBUD), 5' HEIGHT, CLUMP FORM, BALLED AND BURLAPPED	EACH	3
* K1004572	PRAIRIE SEEDING (SPECIAL)	ACRE	0.4
* K1005421	SEEDING (SPECIAL)	ACRE	0.4
Z0004562	COMBINATION CONCRETE CURB AND GUTTER REMOVAL AND REPLACEMENT	FOOT	16
Z0042002	POROUS GRANULAR EMBANKMENT, SUBGRADE	SQ YD	52

* SPECIALTY ITEM

FILE NAME = #FILE#



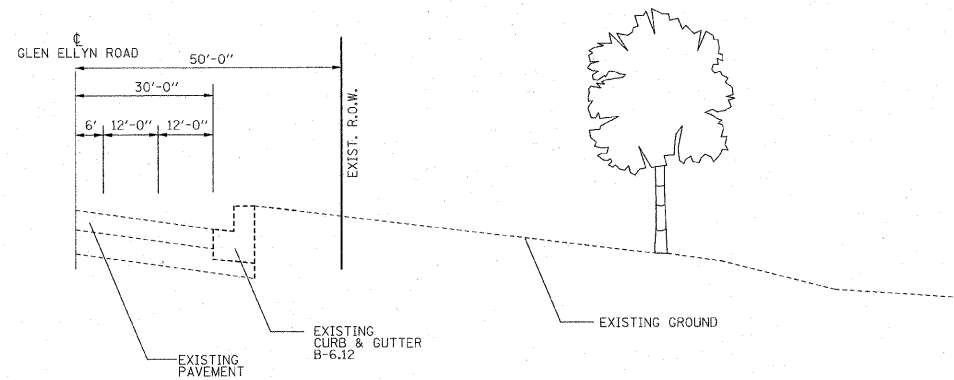
USER NAME = #USER#	DESIGNED <i>JIF</i>	REVISED -
	DRAWN <i>KJB</i>	REVISED -
PLOT SCALE = #SCALE#	CHECKED <i>DDL</i>	REVISED -
PLOT DATE = #DATE#	DATE 4/10/12	REVISED -

**ILLINOIS DEPARTMENT OF TRANSPORTATION
DIVISION OF HIGHWAYS**

SUMMARY OF QUANTITIES / SCHEDULES

SHEET NO. 1 OF 1 SHEETS

F.A.P. RTE.	SECTION	COUNTY	TOTAL SHEETS	SHEET NO.
	08-F3000-10-BT		20	3
CONTRACT NO. 63710				
FED. ROAD DIST. NO. 1 ILLINOIS FED. AID PROJECT				



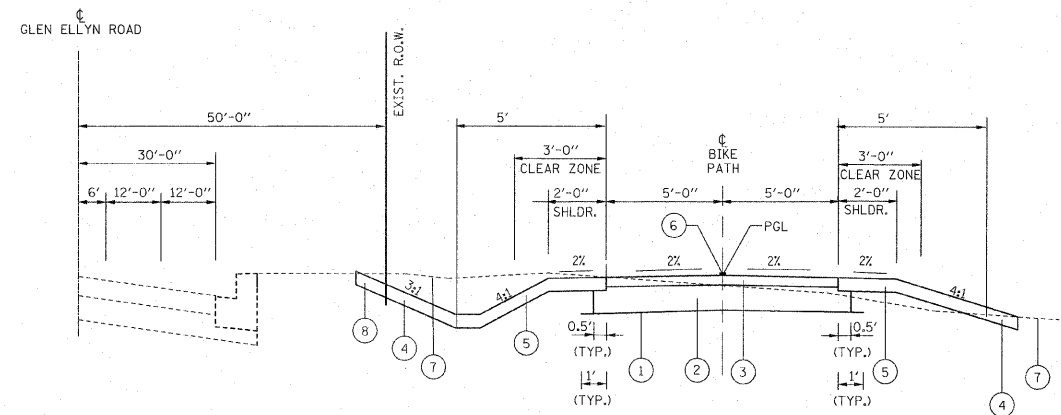
EXISTING TYPICAL SECTION

HOT-MIX ASPHALT MIXTURE REQUIREMENTS

ITEM	AIR Voids @ NDES
HOT-MIX ASPHALT SURFACE COURSE MIX "D", NSO (IL 9.5mm; 2")	4% @ 50 Gyr.

THE UNIT WEIGHT USED TO CALCULATE ALL HMA SURFACE MIXTURE QUANTITIES IS 112 LBS/SQ YD/IN

THE "AC TYPE" FOR POLYMERIZED HMA MIXES SHALL BE "SBS/SBR PG 76-22" FOR NON-POLYMERIZED HMA THE "AC TYPE" SHALL BE "PG 64-22" UNLESS MODIFIED BY DISTRICT ONE SPECIAL PROVISIONS.
FOR "PERCENT OF RAP" SEE DISTRICT ONE SPECIAL PROVISIONS.



PROPOSED TYPICAL SECTION

**GLEN ELLYN ROAD
STA. 100+08.13 TO 111+59.77
AND STA. 112+80.00 TO 119+79.16**

LEGEND

- ① GEOTECHNICAL FABRIC FOR GROUND STABILIZATION
- ② AGGREGATE BASE COURSE, TYPE B, 8"
- ③ 2" HOT MIX ASPHALT SURFACE COURSE, MIX "D", NSO
- ④ TOP SOIL FURNISH AND PLACE 6", SEEDING, PRAIRIE AND SAVANNA
- ⑤ TOP SOIL FURNISH AND PLACE 6", TRI-TALL FESCUE SEED MIX AND TRI-BLEN RYE SEED MIX
- ⑥ PAINT PAVEMENT MARKINGS - LINE 4", YELLOW
- ⑦ EXISTING GROUND
- ⑧ TOP SOIL FURNISH AND PLACE 6", SEEDING, CLASS 2A

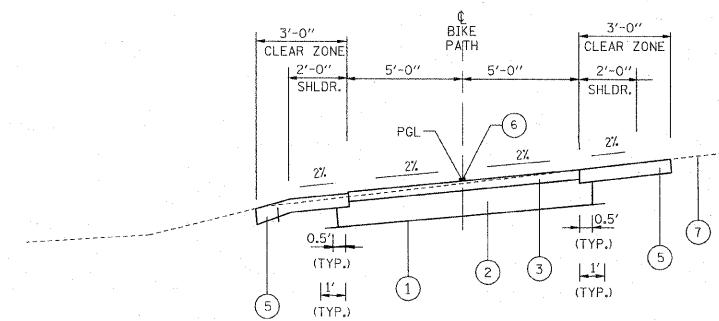
NOTE 1: THE EXCAVATED MATERIAL CAN BE EITHER UNSUITABLE OR UNSTABLE MATERIAL WHICH IS TO BE DETERMINED BY THE ENGINEER AT THE TIME OF CONSTRUCTION. UNDERCUT DEPTHS ARE NOT A STANDARD 12 INCHES, DEPTHS OF THE UNDERCUTS SHALL BE DETERMINED BY THE ENGINEER DURING CONSTRUCTION.

NOTE 2: GEOTECHNICAL FABRIC AND GROUND STABILIZATION SHALL BE ONLY USED IN AREAS RECOMMENDED OR AS DETERMINED AT THE TIME OF CONSTRUCTION, BOTH AS DETERMINED BY THE ENGINEER.

NOTE 3: PORTLAND CEMENT CONCRETE SIDEWALK 6" SHOULD BE PLACED ON LOCATIONS ACCORDING TO DETAIL ON SHEET NO. 8

NOTE 4: WHERE CROSS DRAINAGE ACROSS THE PATH IS SHOWN ON THE CROSS SECTIONS, THE CONTRACTOR SHALL PROVIDE A CONSTANT CROSS SLOPE IN THE DIRECTION OF THE GROUND SLOPE.

NOTE 5: THE PRAIRIE SEED MIX AND SAVANNA SEED MIX ARE FOR DISTURBED AREAS OUTSIDE OF THE SHOULDER AND FRONT SLOPE AREA.



PROPOSED TYPICAL SECTION

**GLEN ELLYN ROAD
(JUST EAST OF EAST BRANCH FOREST PRESERVE ENTRANCE)
STA. 111+79.23 TO 112+80**

FILE NAME = #FILES#



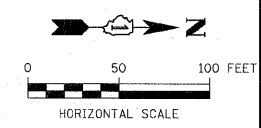
USER NAME = #USER#	DESIGNED <i>JIF</i>	REVISED -
PLOT SCALE = #SCALE#	DRAWN <i>KJB</i>	REVISED -
PLOT DATE = #DATE#	CHECKED <i>DDL</i>	REVISED -
#TIME#	DATE <i>4/10/12</i>	REVISED -

**ILLINOIS DEPARTMENT OF TRANSPORTATION
DIVISION OF HIGHWAYS**

TYPICAL SECTIONS

SHEET NO. 1 OF 1 SHEETS

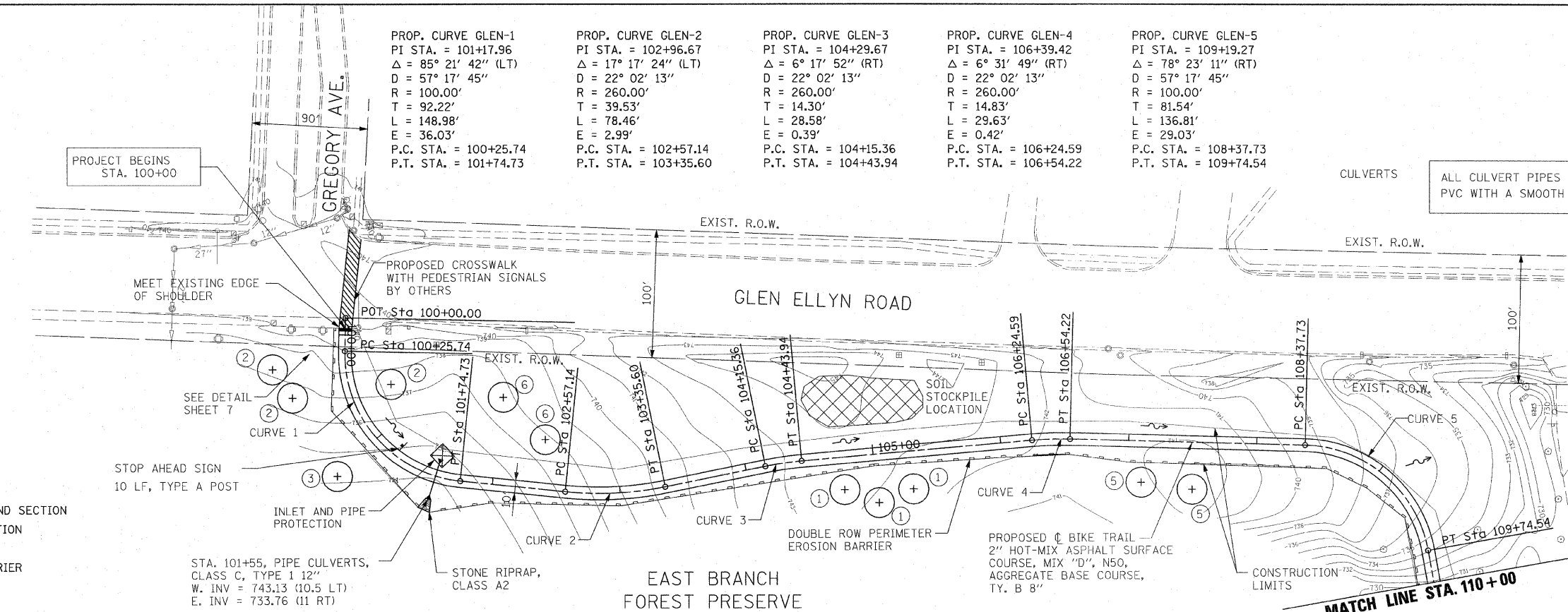
F.A.P. RTE.	SECTION	COUNTY	TOTAL SHEETS	SHEET NO.
	08-F3000-10-BT	DUPAGE	20	4
CONTRACT NO. 63710				
FED. ROAD DIST. NO. 1 ILLINOIS FED. AID PROJECT				



- PROP. TREE LEGEND**
- ① AMELANCHIER ARBOREA
 - ② CERCIS CANADENSIS
 - ③ JUGLANS NIGRA
 - ④ QUERCUS BICOLOR
 - ⑤ QUERCUS MACROCARPA
 - ⑥ TILIA AMERICANA

- LEGEND**
- + SWALE TIP
 - + DITCH SUMMIT
 - + DITCH CHECK
 - + PROPOSED CULVERT
 - + EXISTING CULVERT
 - + EXISTING MANHOLE
 - + EXISTING FENCE
 - + REINFORCED CONCRETE END SECTION
 - + INLET AND PIPE PROTECTION
 - + TREE REMOVAL
 - + PERIMETER EROSION BARRIER

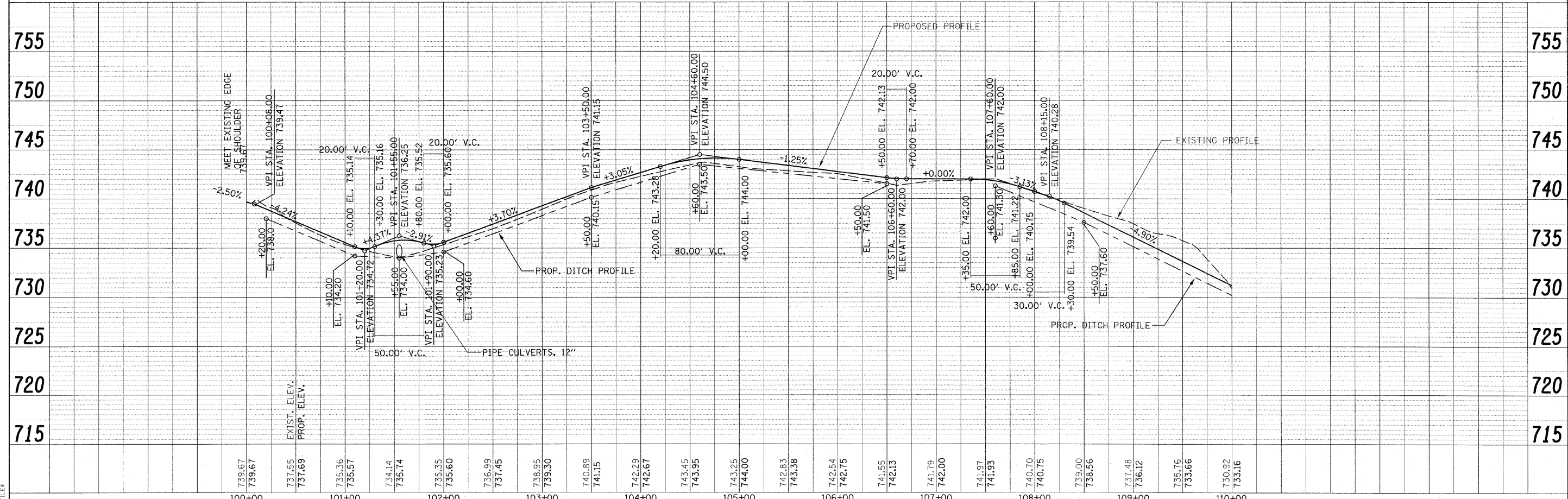
PROP. CURVE GLEN-1	PROP. CURVE GLEN-2	PROP. CURVE GLEN-3	PROP. CURVE GLEN-4	PROP. CURVE GLEN-5
PI STA. = 101+17.96	PI STA. = 102+96.67	PI STA. = 104+29.67	PI STA. = 106+39.42	PI STA. = 109+19.27
Δ = 85° 21' 42" (LT)	Δ = 17° 17' 24" (LT)	Δ = 6° 17' 52" (RT)	Δ = 6° 31' 49" (RT)	Δ = 78° 23' 11" (RT)
D = 57° 17' 45"	D = 22° 02' 13"	D = 22° 02' 13"	D = 22° 02' 13"	D = 57° 17' 45"
R = 100.00'	R = 260.00'	R = 260.00'	R = 260.00'	R = 100.00'
T = 92.22'	T = 39.53'	T = 14.30'	T = 14.83'	T = 81.54'
L = 148.98'	L = 78.46'	L = 28.58'	L = 29.63'	L = 136.81'
E = 36.03'	E = 2.99'	E = 0.39'	E = 0.42'	E = 29.03'
P.C. STA. = 100+25.74	P.C. STA. = 102+57.14	P.C. STA. = 104+15.36	P.C. STA. = 106+24.59	P.C. STA. = 108+37.73
P.T. STA. = 101+74.73	P.T. STA. = 103+35.60	P.T. STA. = 104+43.94	P.T. STA. = 106+54.22	P.T. STA. = 109+74.54



CULVERTS
ALL CULVERT PIPES SHALL BE CORRUGATED PVC WITH A SMOOTH INTERIOR.

STA. 101+55, PIPE CULVERTS,
CLASS C, TYPE 1 12"
W. INV = 743.13 (10.5 LT)
E. INV = 733.76 (11 RT)

MATCH LINE STA. 110+00



	USER NAME = #USER#	DESIGNED - JIF	REVISED -	ILLINOIS DEPARTMENT OF TRANSPORTATION DIVISION OF HIGHWAYS	GLEN ELLYN ROAD TRAIL PLAN AND PROFILE	F.A. RTE.	SECTION	COUNTY	TOTAL SHEETS	SHEET NO.
	PLOT SCALE = #SCALE#	CHECKED - DDL	REVISED -			08-F3000-10-BT	DUPAGE	20	5	
FILE NAME	DATE = 04/10/2012	DATE	REVISED -	SCALE: 1/4"=1'-0"	SHEET NO. 1 OF 2 SHEETS	STA. 99+30	TO STA. 115+00	CONTRACT NO. 63710		

PLAN

DATE	
BY	
NO.	
NO.	

PROFILE

DATE	
BY	
NO.	
NO.	

PROP. CURVE GLEN-6
 PI STA. = 113+89.51
 $\Delta = 144^\circ 07' 03''$ (LT)
 $D = 46^\circ 57' 50''$
 $R = 122.00'$
 $T = 376.79'$
 $E = 274.05'$
 P.C. STA. = 110+12.72
 P.T. STA. = 113+19.59

PROP. CURVE GLEN-7
 PI STA. = 114+99.87
 $\Delta = 62^\circ 26' 10''$ (RT)
 $D = 57^\circ 17' 45''$
 $R = 100.00'$
 $T = 60.61'$
 $E = 16.93'$
 P.C. STA. = 114+39.26
 P.T. STA. = 115+48.23

STA. 114+90, PIPE CULVERTS,
 CLASS C, TYPE 1 12"
 W. INV = 725.33 (12 LT)
 E. INV = 725.19 (12 RT)

- PROP. TREE LEGEND
- ① AMELANCHIER ARBOREA
 - ② CERCIS CANADENSIS
 - ③ JUGLANS NIGRA
 - ④ QUERCUS BICOLOR
 - ⑤ QUERCUS MACROCARPA
 - ⑥ TILIA AMERICANA

LEGEND

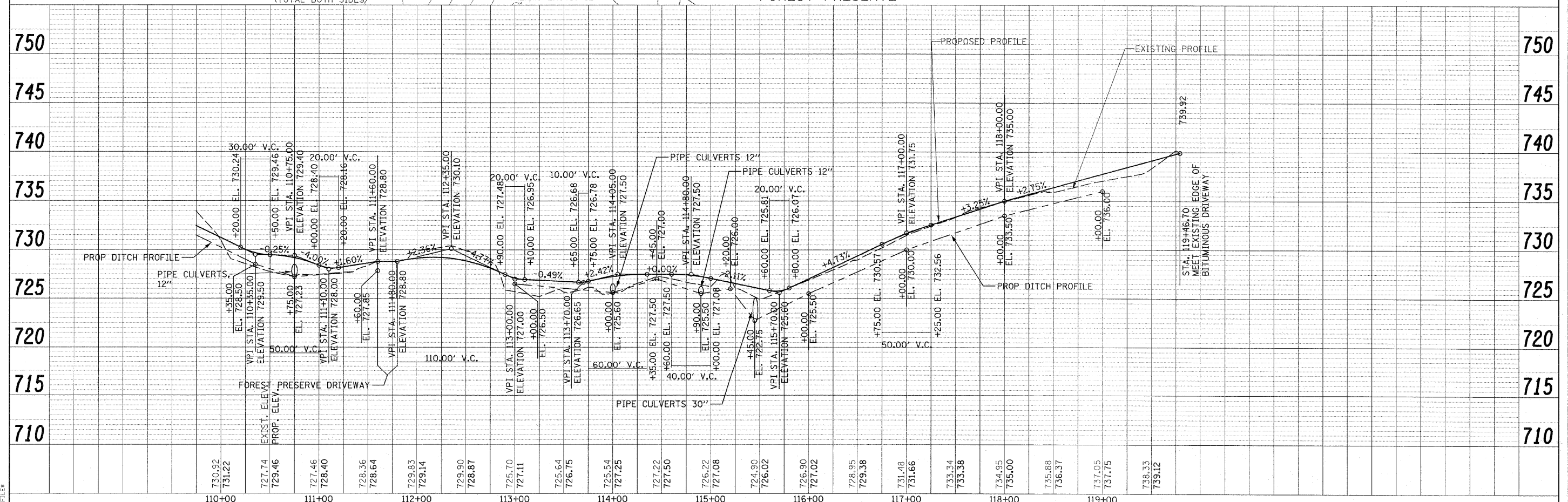
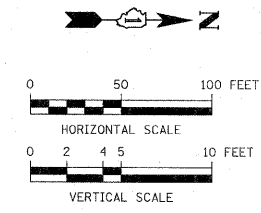
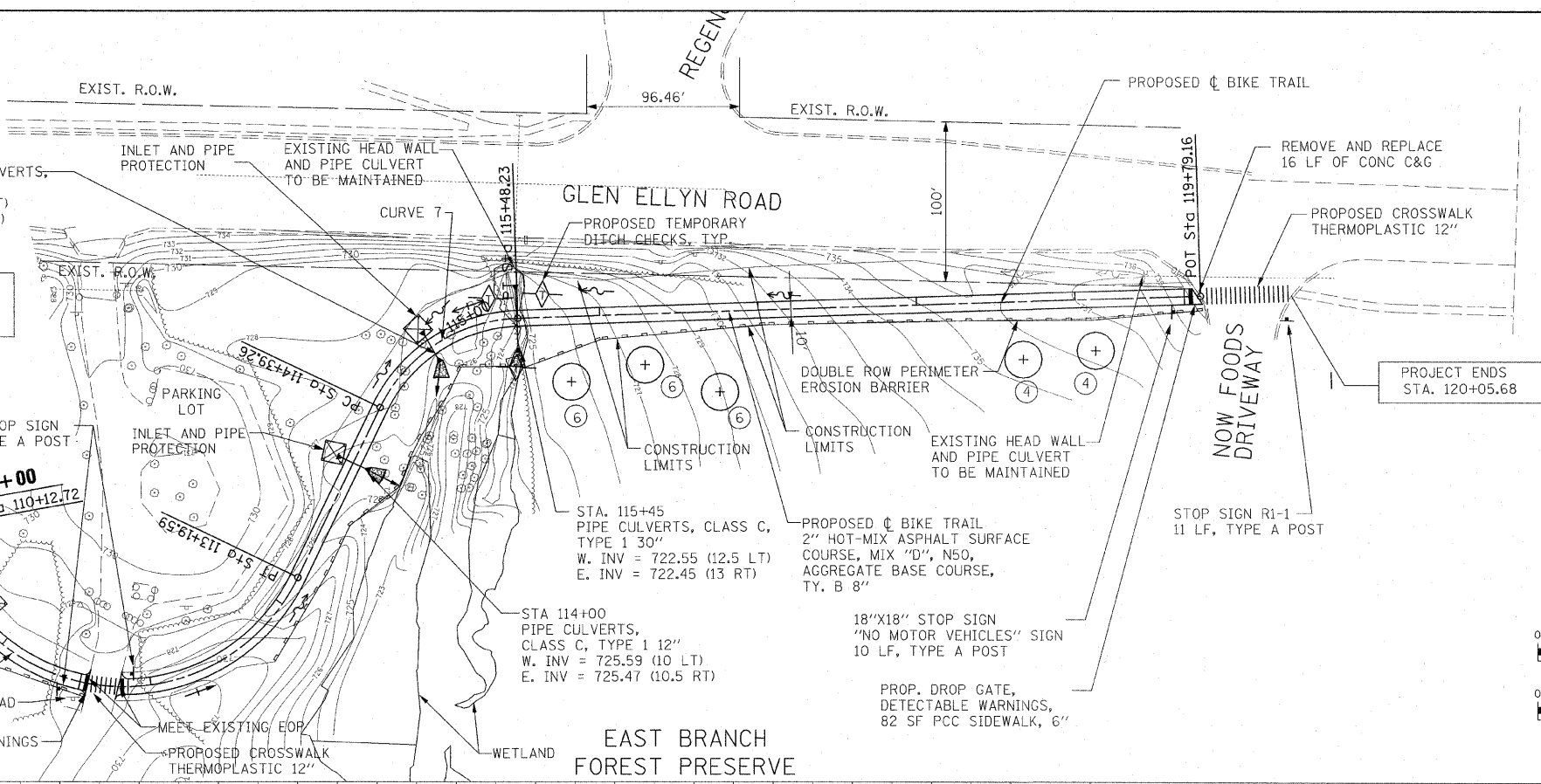
- + SWALE TIP
- + DITCH SUMMIT
- + DITCH CHECK
- + PROPOSED CULVERT
- + EXISTING CULVERT
- + EXISTING MANHOLE
- + EXISTING FENCE
- + REINFORCED CONCRETE END SECTION
- + INLET AND PIPE PROTECTION
- + TREE REMOVAL
- + PERIMETER EROSION BARRIER

ALL CULVERT PIPES SHALL BE CORRUGATED PVC WITH A SMOOTH INTERIOR.

STA 110+80
 PIPE CULVERTS, CLASS C,
 TYPE 1 12"
 W. INV = 727.34 (11 LT)
 E. INV = 727.2 (11 RT)

STONE RIPRAP,
 CLASS A2, TYP.

EXISTING SIGN AND CONCRETE PAD
 TO BE MAINTAINED
 PROPOSED DETECTABLE WARNINGS
 124 SF PCC SIDEWALK, 6"
 (TOTAL BOTH SIDES)



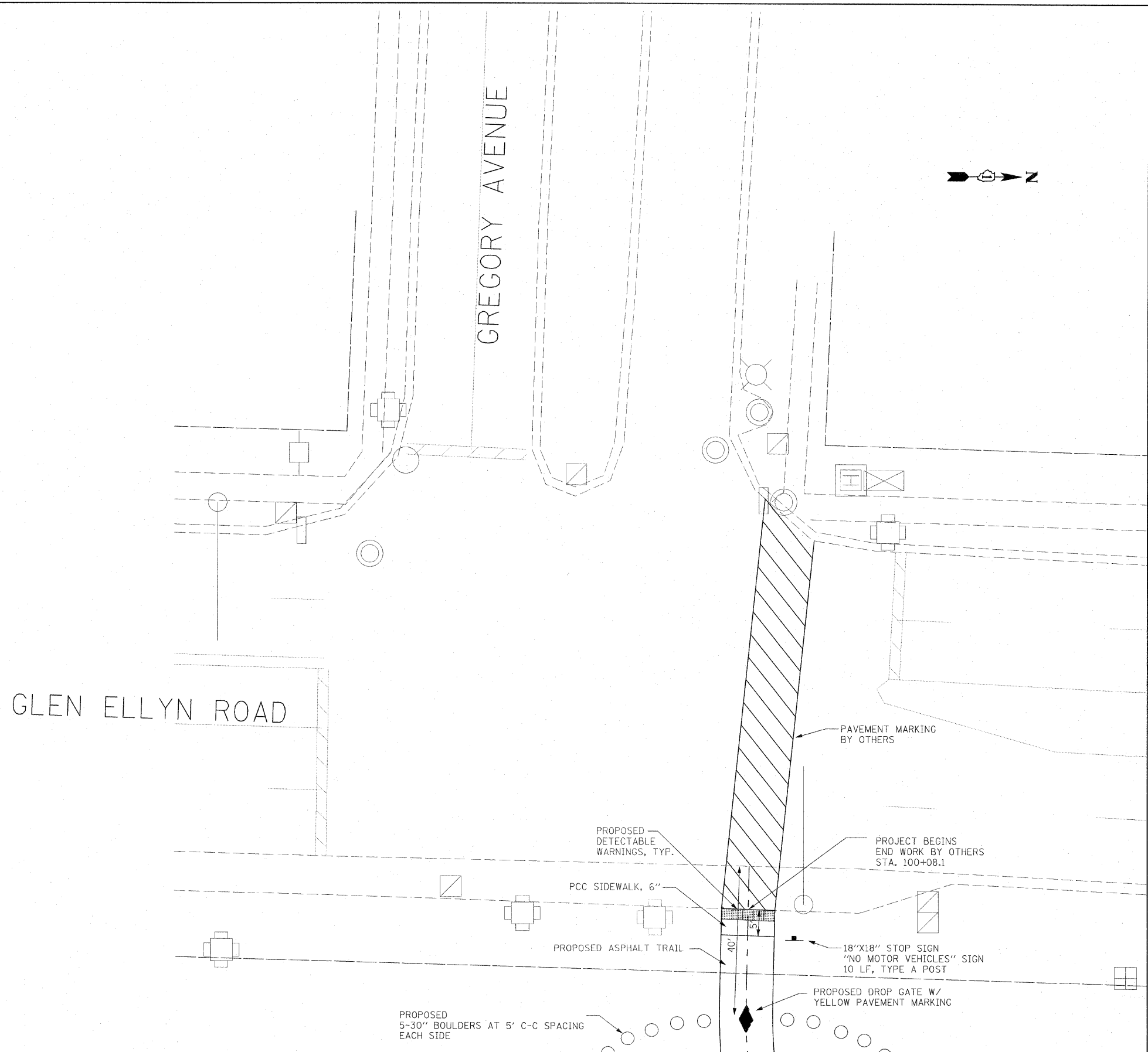
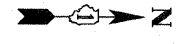
USER NAME = #USER#	DESIGNED - JIF	REVISED -
PLOT SCALE = #SCALE#	DRAWN - KJB	REVISED -
PLOT DATE = #DATE#	CHECKED - DDL	REVISED -
	DATE - 04/10/2012	REVISED -

ILLINOIS DEPARTMENT OF TRANSPORTATION
DIVISION OF HIGHWAYS

GLEN ELLYN ROAD TRAIL
PLAN AND PROFILE

SCALE: 1"=50'
SHEET NO. 2 OF 2 SHEETS STA. 115+00 TO STA. 119+46.70

F.A. RTE.	SECTION	COUNTY	TOTAL SHEETS	SHEET NO.
	08-F3000-10-BT	DUPAGE	20	6
CONTRACT NO. 63710				
FED. ROAD DIST. NO. ILLINOIS FED. AID PROJECT				



FILE NAME = #FILE#

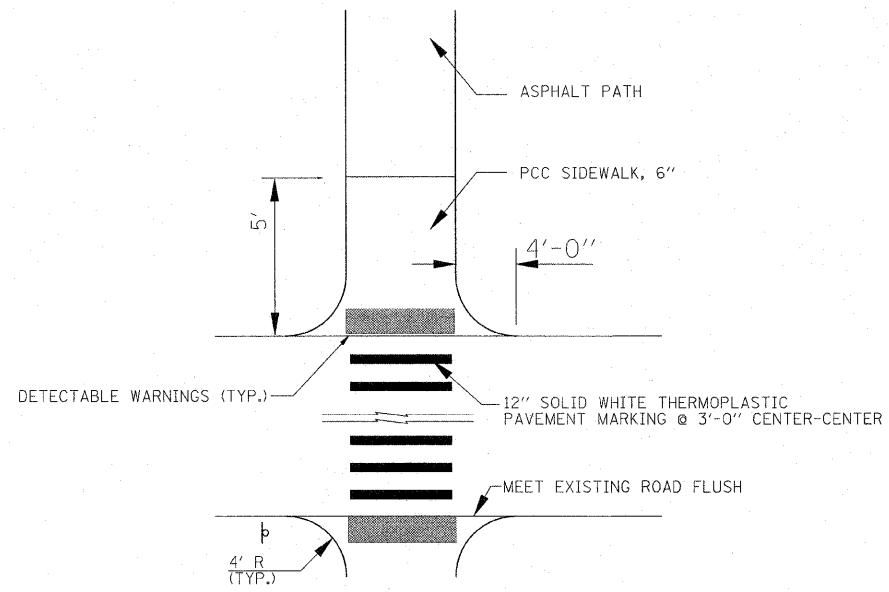


USER NAME = #USER#	DESIGNED <i>JIF</i>	REVISED -
	DRAWN <i>KJB</i>	REVISED -
PLOT SCALE = #SCALE#	CHECKED <i>DDL</i>	REVISED -
PLOT DATE = #DATE#	DATE <i>4/10/12</i>	REVISED -

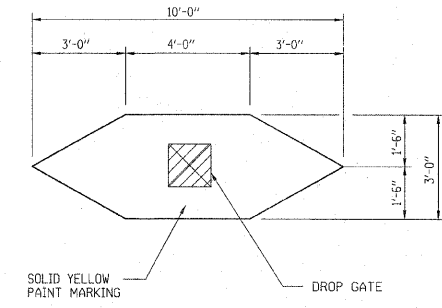
**ILLINOIS DEPARTMENT OF TRANSPORTATION
DIVISION OF HIGHWAYS**

SCALE: 1" = 50 ft	SHEET NO.	OF	SHEETS	STA.	TO	STA.
-------------------	-----------	----	--------	------	----	------

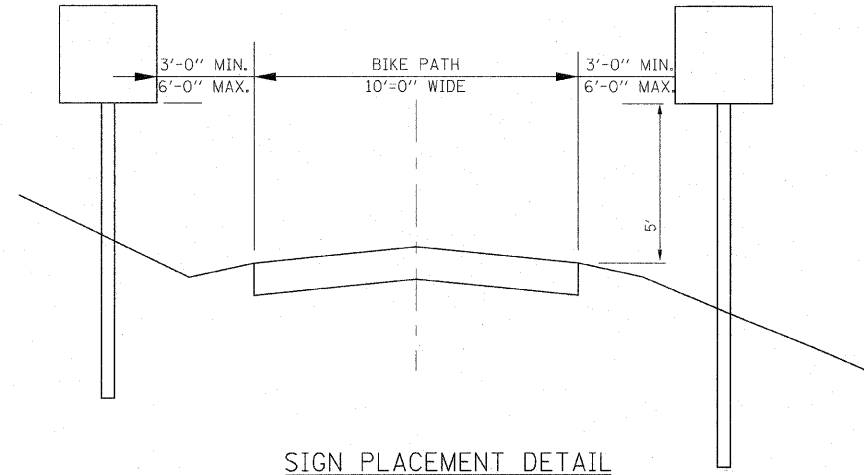
F.A.P. RTE.	SECTION	COUNTY	TOTAL SHEETS	SHEET NO.
	08-F3000-10-BT	DUPAGE	20	7
CONTRACT NO. 63710				
FED. ROAD DIST. NO. 1 ILLINOIS FED. AID PROJECT				



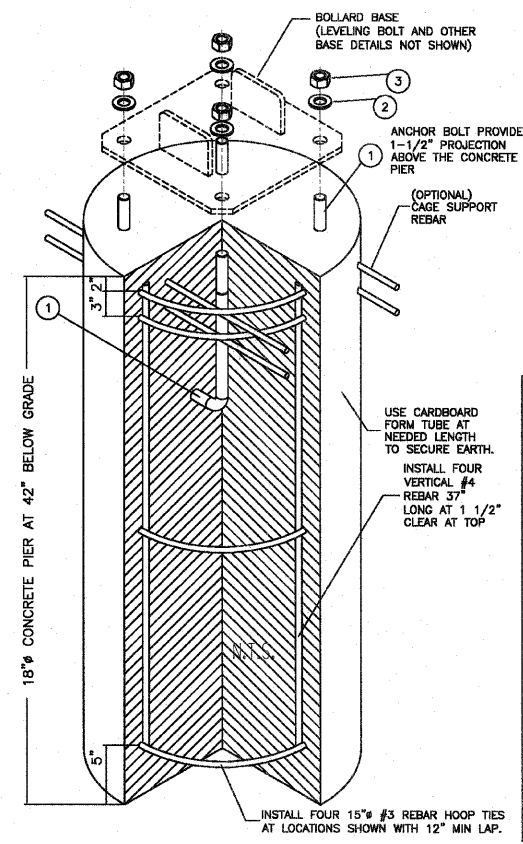
PAVEMENT MARKING DETAIL



DROP GATE MARKING DETAIL
N.T.S.



SIGN PLACEMENT DETAIL



DROP GATE INSTALLATION DETAIL

FILE NAME = #FILE#



USER NAME = #USER#	DESIGNED <i>JIF</i>	REVISED -
PLOT SCALE = #SCALE#	DRAWN <i>KJB</i>	REVISED -
PLOT DATE = #DATE# \$TIME#	CHECKED <i>DDL</i>	REVISED -
	DATE 4/10/12	REVISED -

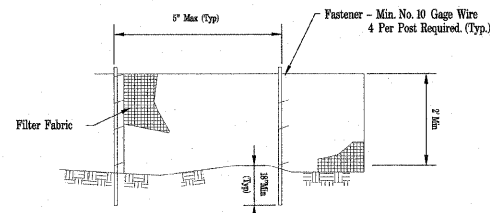
ILLINOIS DEPARTMENT OF TRANSPORTATION
DIVISION OF HIGHWAYS

MISCELLANEOUS DETAILS

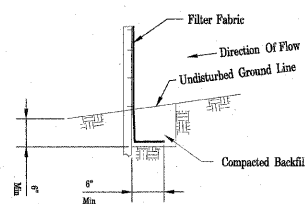
SCALE: 1" = 50 FT SHEET NO. OF SHEETS STA. TO STA.

F.A.P. RTE.	SECTION	COUNTY	TOTAL SHEETS	SHEET NO.
	08-F3000-10-BT	DUPAGE	20	8
CONTRACT NO. 63710				
FED. ROAD DIST. NO. 1 ILLINOIS FED. AID PROJECT				

AUTOCAD2006



ELEVATION

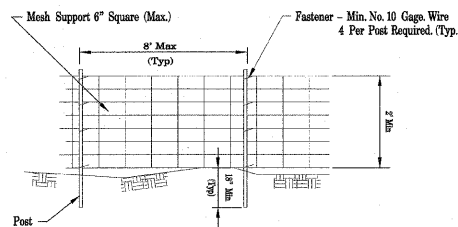


FABRIC ANCHOR DETAIL

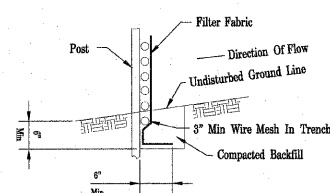
NOTES:

1. Temporary sediment fence shall be installed prior to any grading work in the area to be protected. They shall be maintained throughout the construction period and removed in conjunction with the final grading and site stabilization.
2. Filter fabric shall meet the requirements of material specification 592 Geotextile Table 1 or 2, Class 1 with equivalent opening size of at least 30 for nonwoven and 50 for woven.
3. Fence posts shall be either wood post with a minimum cross-sectional area of 3.0 sq. in. or a standard steel post.

AUTOCAD2006



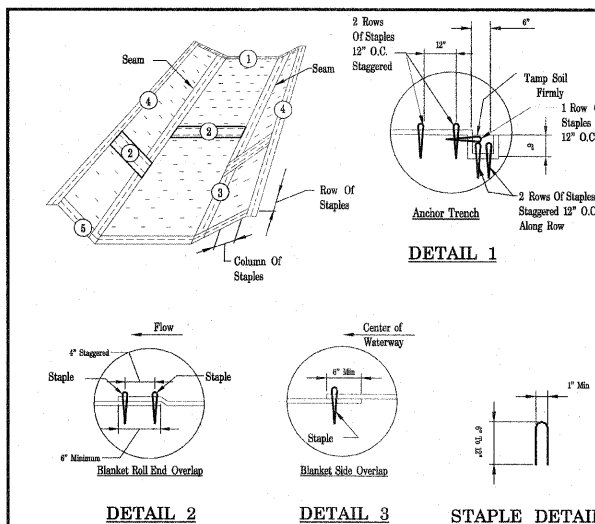
ELEVATION



FABRIC ANCHOR DETAIL

NOTES:

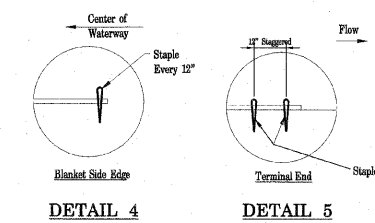
1. Wires of mesh support shall be min. gage no. 12.
2. Temporary sediment fence shall be installed prior to any grading work in the area to be protected. They shall be maintained throughout the construction period and removed in conjunction with the final grading and site stabilization.
3. Filter fabric shall meet the requirements of material specification 592 Geotextile Table 1 or 2, Class 1 with equivalent opening size of at least 30 for nonwoven and 50 for woven.
4. Fence posts shall be either wood post with a minimum cross-sectional area of 3.0 sq. in. or a standard steel post.



NOTES:

1. Install erosion control blanket (ECB) over waterway: Waterway Width _____ ft length _____ ft Sta. _____ to _____ ECR width _____ ft
2. The erosion control blanket shall consist of a machine produced mat of curled wood or coconut fibers shall have an expected material life of a least 12 months, shall be new and unused, shall be furnished in rolls, and shall meet the minimum requirements stated in Table 1 below.
3. Prepare soil prior to installing erosion control blanket, including seeding, fertilizing, and lime application.
4. The erosion control blanket shall be placed in firm contact with the soil and not be allowed to bridge over surface irregularities. The blanket shall not be stretched.
5. Start laying the blankets by rolling center blanket in the direction of flow, centered on the centerline of waterway. There shall not be an overlap of blankets at the center of the waterway.
6. The erosion control blanket shall be anchored, overlapped, and stapled according to manufacturer's instructions. If no manufacturer's instructions are available, install the blanket as follows:
 - a. Staples shall be "U" shaped, 0.12 in diameter wire or greater (#11 gauge). See Staple Detail for dimensions.
 - b. Bury upstream end of blanket in a trench 6 inch wide by 6 inch deep and stapled in staggered rows across the width as shown in Detail 1.
 - c. For joining ends of rolls, overlap end of upslope blanket a minimum of 6 inches over downslope blanket (single style). Use a double row of staggered staples 4 inches apart, as shown in Detail 2.
 - d. Blankets on side slopes shall overlap a minimum 6 inches over the blanket below (single style). Staple overlap at 12 inch intervals. See Detail 3.
 - e. The outer edge along sides of the blanket shall be stapled every 12 inches. See Detail 4.
 - f. Staples are to be placed alternately in columns (in the direction of the waterway) 2 feet apart and in rows (across the waterway) 3 feet apart, throughout the area covered by erosion blankets.
 - g. Downstream (terminal) end of blanket shall be stapled with a double row of staggered staples 12 inches apart. See Detail 5.

	Coconut Blanket	Wood Fiber Blanket
Type of Fiber	100% coconut fibers	100% curled wood fibers
Weight, lbs/sq. yd	0.50	0.63
Fiber Length	NA	80% of fibers > 6 in.
Fiber Dimensions	NA	0.021 in. x 0.042 in.
	Optional - Top and bottom of blanket may be covered with a max. 56" x 56" opening size netting, bound to the mat on max. 15' centers.	Optional - Top and bottom of blanket may be covered with a max. 56" x 56" opening size netting



NRC
 National Resource Conservation Service
 United States Department of Agriculture

SILT FENCE

Designed: _____
 Drawn: M. QUONNEN 1/96
 Checked: _____
 Approved: _____

NRC
 National Resource Conservation Service
 United States Department of Agriculture

SILT FENCE WITH WIRE SUPPORT

Designed: _____
 Drawn: M. QUONNEN 1/96
 Checked: _____
 Approved: _____

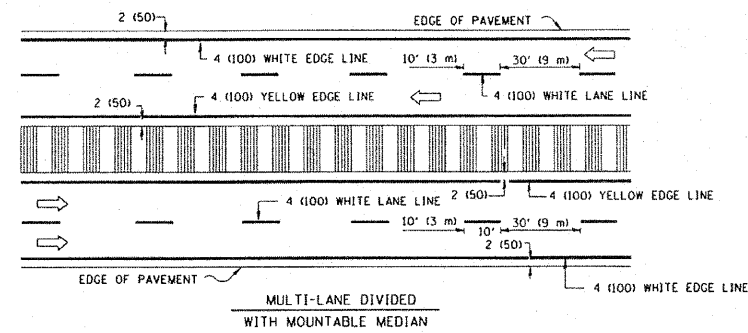
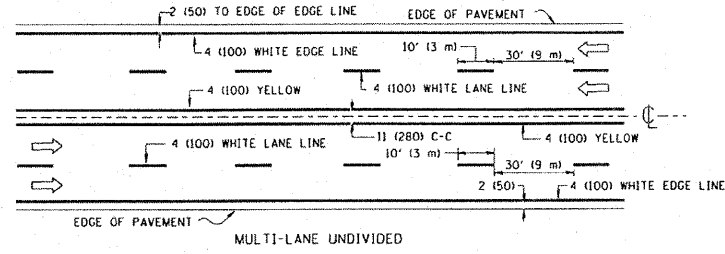
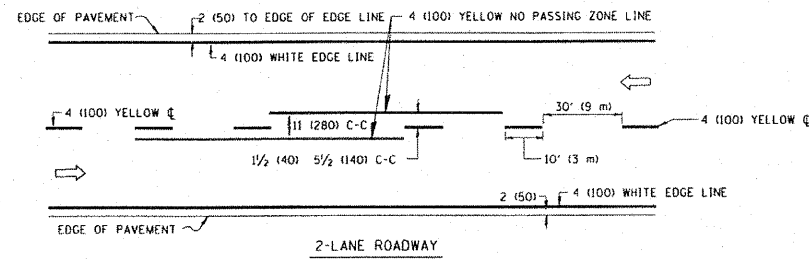
EROSION BLANKET
 INSTALLATION DETAILS

National Resource Conservation Service
 United States Department of Agriculture

IL ENG-61
 Drawing Title
 Sheet 1 of 1

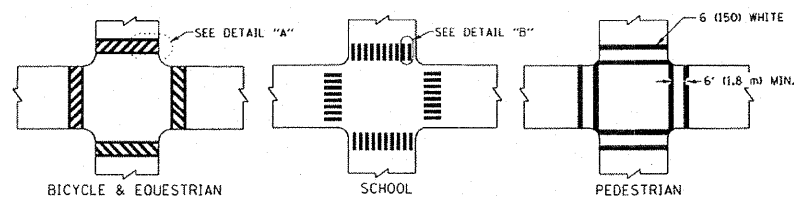
FILE NAME = #FILE#

	USER NAME = #USER#	DESIGNED <i>JIF</i>	REVISED -	ILLINOIS DEPARTMENT OF TRANSPORTATION DIVISION OF HIGHWAYS	EROSION CONTROL DETAILS	F.A.P. RTE.	SECTION	COUNTY	TOTAL SHEETS	SHEET NO.
	PLOT SCALE = #SCALE#	DRAWN <i>KJB</i>	REVISED -			08-F3000-10-BT	DUPAGE	20	9	
PLOT DATE = #DATE#	STIME#	CHECKED <i>DDL</i>	REVISED -	SCALE: 1" = 50 FT	SHEET NO. OF SHEETS	STA.	TO STA.	CONTRACT NO. 63710		
	DATE <i>4/10/12</i>	REVISED -						FED. ROAD DIST. NO. 1 ILLINOIS FED. AID PROJECT		

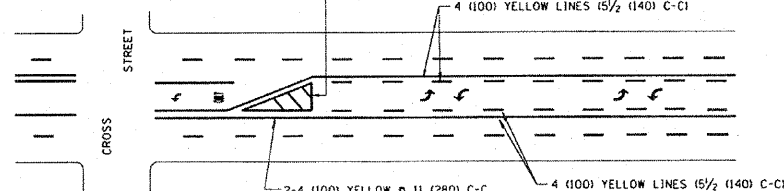
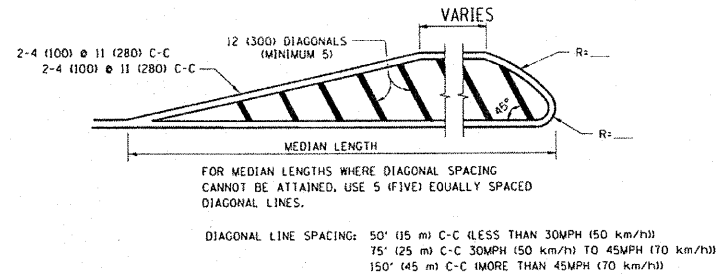
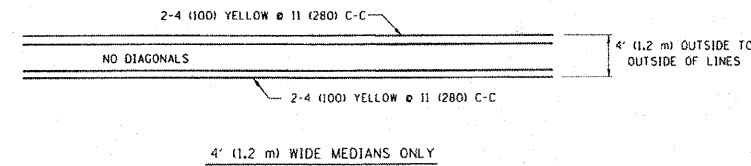


NOTE: MEDIANS WITH BARRIER CURB DO NOT REQUIRE AN EDGE LINE

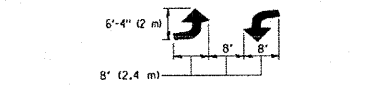
TYPICAL LANE AND EDGE LINE MARKING



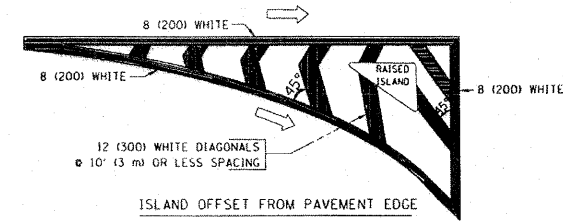
TYPICAL CROSSWALK MARKING



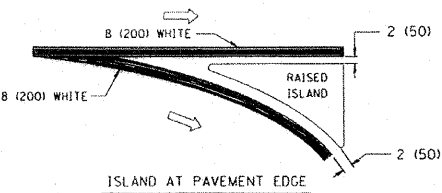
TYPICAL PAINTED MEDIAN MARKING



TYPICAL TURN LANE MARKING



ISLAND OFFSET FROM PAVEMENT EDGE



ISLAND AT PAVEMENT EDGE

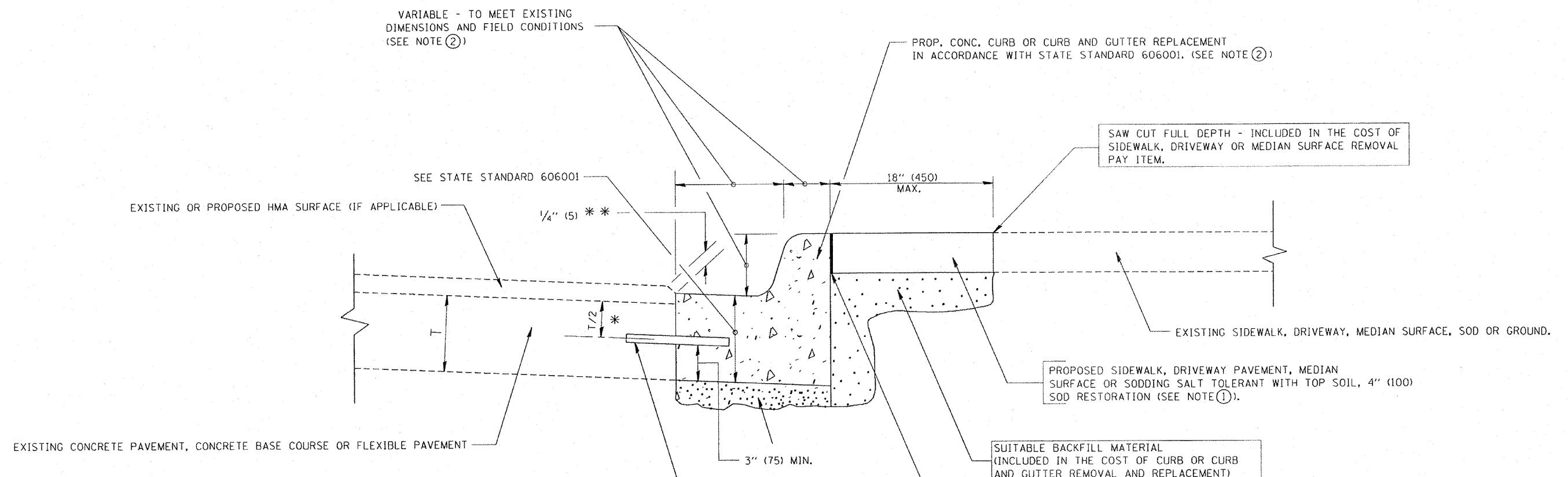
TYPICAL ISLAND MARKING

TYPE OF MARKING	WIDTH OF LINE	PATTERN	COLOR	SPACING / REMARKS
CENTERLINE ON 2 LANE PAVEMENT	4 (1100)	SKIP-DASH	YELLOW	10' (3 m) LINE WITH 30' (9 m) SPACE
CENTERLINE ON MULTI-LANE UNDIVIDED PAVEMENT	2 @ 4 (1100)	SOLID	YELLOW	11 (2800) C-C
NO PASSING ZONE LINES FOR ONE DIRECTION FOR BOTH DIRECTIONS	4 (1100) 2 @ 4 (1100)	SOLID SOLID	YELLOW YELLOW	5 1/2' (1400) C-C FROM SKIP-DASH CENTERLINE 11 (2800) C-C OMIT SKIP-DASH CENTERLINE BETWEEN
LANE LINES	4 (1100) 5 (1250) ON FREEWAYS	SKIP-DASH SKIP-DASH	WHITE WHITE	10' (3 m) LINE WITH 30' (9 m) SPACE
DOTTED LINES (EXTENSIONS OF CENTER, LANE OR TURN LANE MARKINGS)	SAME AS LINE BEING EXTENDED	SKIP-DASH	SAME AS LINE BEING EXTENDED	2' (600) LINE WITH 6' (1.8 m) SPACE
EDGE LINES	4 (1100)	SOLID	YELLOW-LEFT WHITE-RIGHT	OUTLINE MOUNTABLE MEDIANS IN YELLOW; EDGE LINES ARE NOT USED NEXT TO BARRIER CURB
TURN LANE MARKINGS	6 (1500) LINE; FULL SIZE LETTERS & SYMBOLS 18" (2.4m)	SOLID	WHITE	SEE TYPICAL TURN LANE MARKING DETAIL
TWO WAY LEFT TURN MARKING	2 @ 4 (1100) EACH DIRECTION 8' (2.4m) LEFT ARROW	SKIP-DASH AND SOLID IN PAIRS	YELLOW WHITE	10' (3 m) LINE WITH 30' (9 m) SPACE FOR SKIP-DASH; 5 1/2' (1400) C-C BETWEEN SOLID LINE AND SKIP-DASH LINE SEE TYPICAL TWO-WAY LEFT TURN MARKING DETAIL
CROSSWALK LINES (PEDESTRIAN) A. DIAGONALS (BIKE & EQUESTRIAN) B. LONGITUDINAL BARS (SCHOOL)	2 @ 6 (1500) 12 (3000) @ 45° 12 (3000) @ 90°	SOLID SOLID SOLID	WHITE WHITE WHITE	NOT LESS THAN 6' (1.8 m) APART 2' (600) APART 2' (600) APART SEE TYPICAL CROSSWALK MARKING DETAILS.
STOP LINES	24 (600)	SOLID	WHITE	PLACE 4' (1.2 m) IN ADVANCE OF AND PARALLEL TO CROSSWALK, IF PRESENT, OTHERWISE, PLACE AT DESIRED STOPPING POINT, PARALLEL TO CROSSROAD CENTERLINE, WHERE POSSIBLE
PAINTED MEDIANS	2 @ 4 (1100) WITH 12 (3000) DIAGONALS @ 45° NO DIAGONALS USED FOR 4' (1.2 m) WIDE MEDIANS	SOLID	YELLOW; TWO WAY TRAFFIC WHITE; ONE WAY TRAFFIC	11 (2800) C-C FOR THE DOUBLE LINE SEE TYPICAL PAINTED MEDIAN MARKING.
CORE MARKING AND CHANNELIZING LINES	8 (2000) WITH 12 (3000) DIAGONALS @ 45°	SOLID	WHITE	DIAGONALS: 15' (4.5 m) C-C (LESS THAN 30MPH (50 km/h)) 20' (6 m) C-C (30MPH (50 km/h) TO 45MPH (70 km/h)) 30' (9 m) C-C (OVER 45MPH (70 km/h))
RAILROAD CROSSING	24 (600) TRANSVERSE LINES; "RR" 15 6" (1.8 m) LETTERS; 16 (400) LINE FOR "X"	SOLID	WHITE	SEE STATE STANDARD 780001 AREA OF: "R"=3.6 SQ. FT. (0.33 m²) EACH "X"=54.0 SQ. FT. (5.0 m²)
SHOULDER DIAGONALS	12 (3000) @ 45°	SOLID	WHITE - RIGHT YELLOW - LEFT	50' (15 m) C-C (LESS THAN 30MPH (50 km/h)) 75' (25 m) C-C (30 MPH (50 km/h) TO 45MPH (70 km/h)) 150' (45 m) C-C (OVER 45MPH (70 km/h))

FOR FURTHER DETAILS ON PAVEMENT MARKING REFER TO STANDARD SPECIFICATIONS FOR ROAD AND BRIDGE CONSTRUCTION AND STATE STANDARD 780001.

All dimensions are in inches (millimeters) unless otherwise shown.

FILE NAME =	USER NAME = dravakogn	DESIGNED - EVERS	REVISED -T. RAMMACHER 10-27-94	ILLINOIS DEPARTMENT OF TRANSPORTATION DIVISION OF HIGHWAYS	DISTRICT ONE TYPICAL PAVEMENT MARKINGS		F.A. -	SECTION	COUNTY	TOTAL SHEETS	SHEET NO.
es:\work\pav\dravakogn\0108315\to 3.dgn		DRAWN -	REVISED -C. JUCIUS 09-09-09		SCALE: NONE	SHEET NO. 1 OF 1 SHEETS	STA. TO STA.	08-F3000-10-BT	DuPage	20	10
PLOT SCALE = 5/8" = 1' IN.		CHECKED -	REVISED -		CONTRACT NO. 63710		FED. ROAD DIST. NO. 1 ILLINOIS FED. AID PROJECT				
PLOT DATE = 9/9/2009		DATE - 03-19-90	REVISED -								



* 3" (75) MINIMUM FROM TOP AND BOTTOM OF THE CONCRETE PAVEMENT OR BASE COURSE.
 * * IF THE FINAL SURFACE OF THE PAVEMENT IS CONCRETE, THE GUTTER IS TO BE FLUSH WITH THE PAVEMENT.

- NOTE: ① SIDEWALK, DRIVEWAY PAVEMENT OR MEDIAN SURFACE SHALL BE SIMILAR TO THE MATERIAL BEING REMOVED AND WILL BE PAID FOR SEPARATELY.
 SODDING, SALT TOLERANT AND TOP SOIL, FURNISH AND PLACE 4" WILL BE PAID FOR SEPARATELY.
- ② FERTILIZER FOR THE PLACEMENT OF THE SOD IS NOT REQUIRED
- ③ CURB OR CURB AND GUTTER REPLACEMENT SHALL MATCH THE SHAPE OF THE EXISTING CURB OR CURB AND GUTTER UNLESS OTHERWISE SPECIFIED.
- ④ FOR CURB OR CURB AND GUTTER REMOVAL AND REPLACEMENT ADJACENT TO FLEXIBLE PAVEMENT DELETE EPOXY COATED TIE BARS.
- ⑤ LONGITUDINAL BARS, IF ENCOUNTERED IN THE EXISTING CURB OR CURB AND GUTTER, ARE NOT TO BE REPLACED. CUTTING AND REMOVING LONGITUDINAL BARS SHALL BE INCLUDED IN THE COST OF CURB OR CURB AND GUTTER REMOVAL AND REPLACEMENT.
- ⑥ THE COST OF HMA SURFACE REMOVAL IN THE EXISTING GUTTER FLAG SHALL BE INCLUDED IN THE COST OF THE CURB AND GUTTER REMOVAL AND REPLACEMENT.
- ⑦ THE REMOVAL AND REPLACEMENT OF THE EXISTING CURB OR CURB AND GUTTER SHALL BE DONE IN ACCORDANCE WITH THE APPLICABLE PORTIONS OF SECTION 440 AND 606 OF THE STANDARD SPECIFICATIONS.
- ⑧ THE LOCATIONS OF REMOVAL AND REPLACEMENT OF EXISTING CURB OR CURB AND GUTTER SHALL BE DETERMINED BY THE RESIDENT ENGINEER AT THE TIME OF CONSTRUCTION.

REMOVAL AND REPLACEMENT 4" (100) OR LESS IS INCLUDED IN THE COST OF CURB OR CURB AND GUTTER REMOVAL AND REPLACEMENT.
 REMOVAL AND REPLACEMENT IN EXCESS OF 4" (100) WILL BE PAID FOR IN ACCORDANCE WITH ARTICLE 109.04 OF THE STANDARD SPECIFICATIONS.

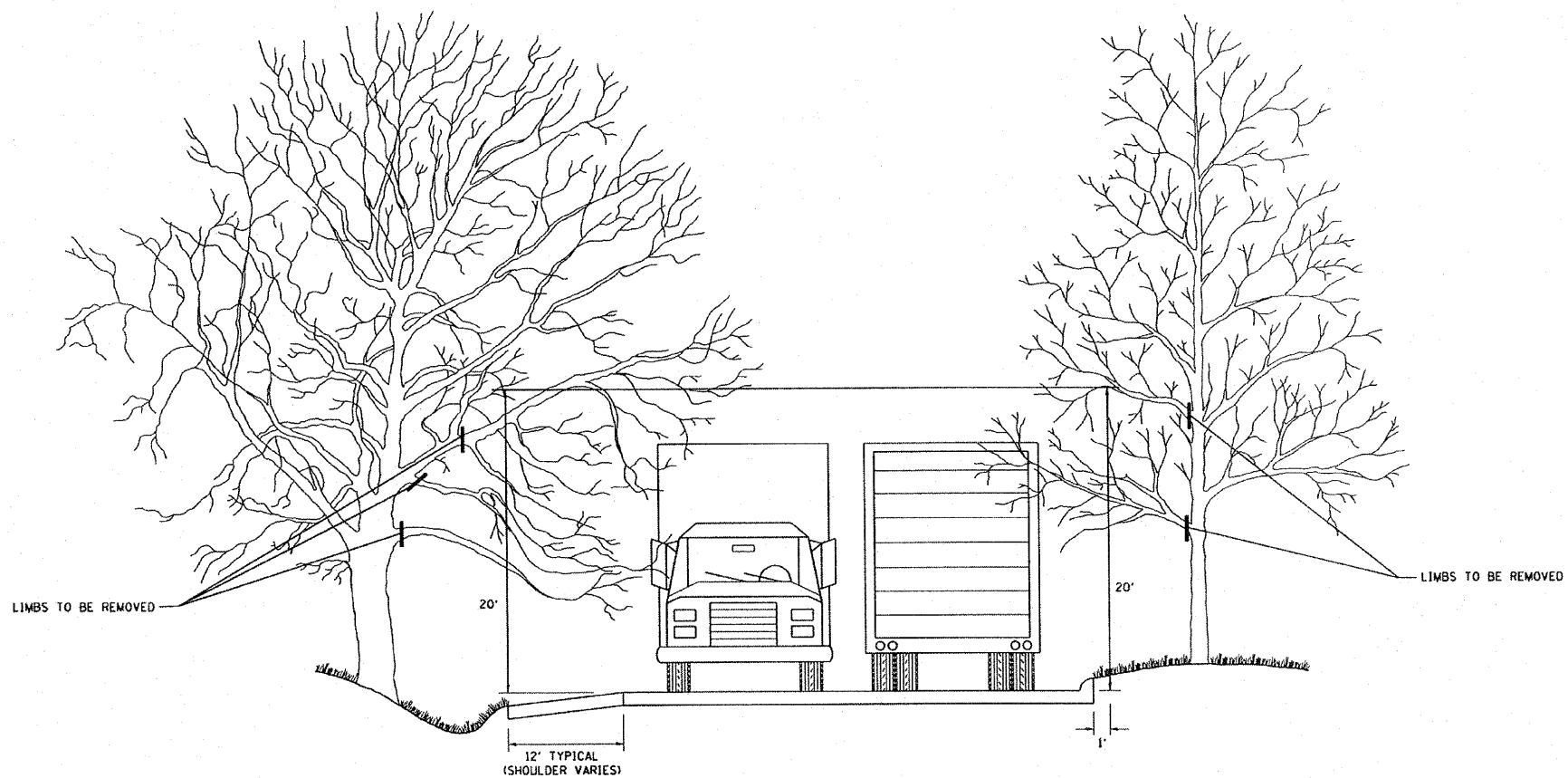
PROPOSED #6 (20) EPOXY COATED TIE BARS 24" (600) LONG AT 24" (600) CENTERS WILL NOT BE PAID FOR SEPARATELY. DELETE EPOXY COATED TIE BARS IF EXISTING TIE BARS ARE USUABLE AS DETERMINED BY THE ENGINEER. (SEE NOTE 3).

BASIS OF PAYMENT:
 THIS WORK WILL BE PAID FOR AT THE CONTRACT UNIT PRICE PER FOOT (METER) FOR "CURB REMOVAL AND REPLACEMENT" OR "COMBINATION CONCRETE CURB AND GUTTER REMOVAL AND REPLACEMENT".

CURB OR CURB AND GUTTER REMOVAL AND REPLACEMENT

ALL DIMENSIONS ARE IN INCHES (MILLIMETERS) UNLESS OTHERWISE SHOWN.

FILE NAME =	USER NAME = drsvkosgn	DESIGNED - A. HOUSEH	REVISED - R. SHAH 10-03-96	ILLINOIS DEPARTMENT OF TRANSPORTATION DIVISION OF HIGHWAYS	CURB OR CURB AND GUTTER REMOVAL AND REPLACEMENT	F.A. RTE.	SECTION	COUNTY	TOTAL SHEETS	SHEET NO.	
		DRAWN -	REVISED - A. ABBAS 03-21-97		SCALE: NONE	SHEET NO. 1 OF 1 SHEETS	STA.	TO STA.	DuPage	20	11
		CHECKED -	REVISED - M. GOMEZ 01-22-01		BD600-06 (BD-24)		FED. ROAD DIST. NO. 1		ILLINOIS FED. AID PROJECT		
		DATE - 03-11-94	REVISED - R. BORO 12-15-09								



FILE NAME =
W:\diststd\22x34\lb=20.dgn

USER NAME = goglianobt

DESIGNED -

REVISED - R. BORO 10-31-06

DRAWN -

REVISED -

PLOT SCALE = 58.000 ' / IN.

CHECKED -

REVISED -

PLOT DATE = 1/4/2008

DATE -

REVISED -

**ILLINOIS DEPARTMENT OF TRANSPORTATION
DIVISION OF HIGHWAYS**

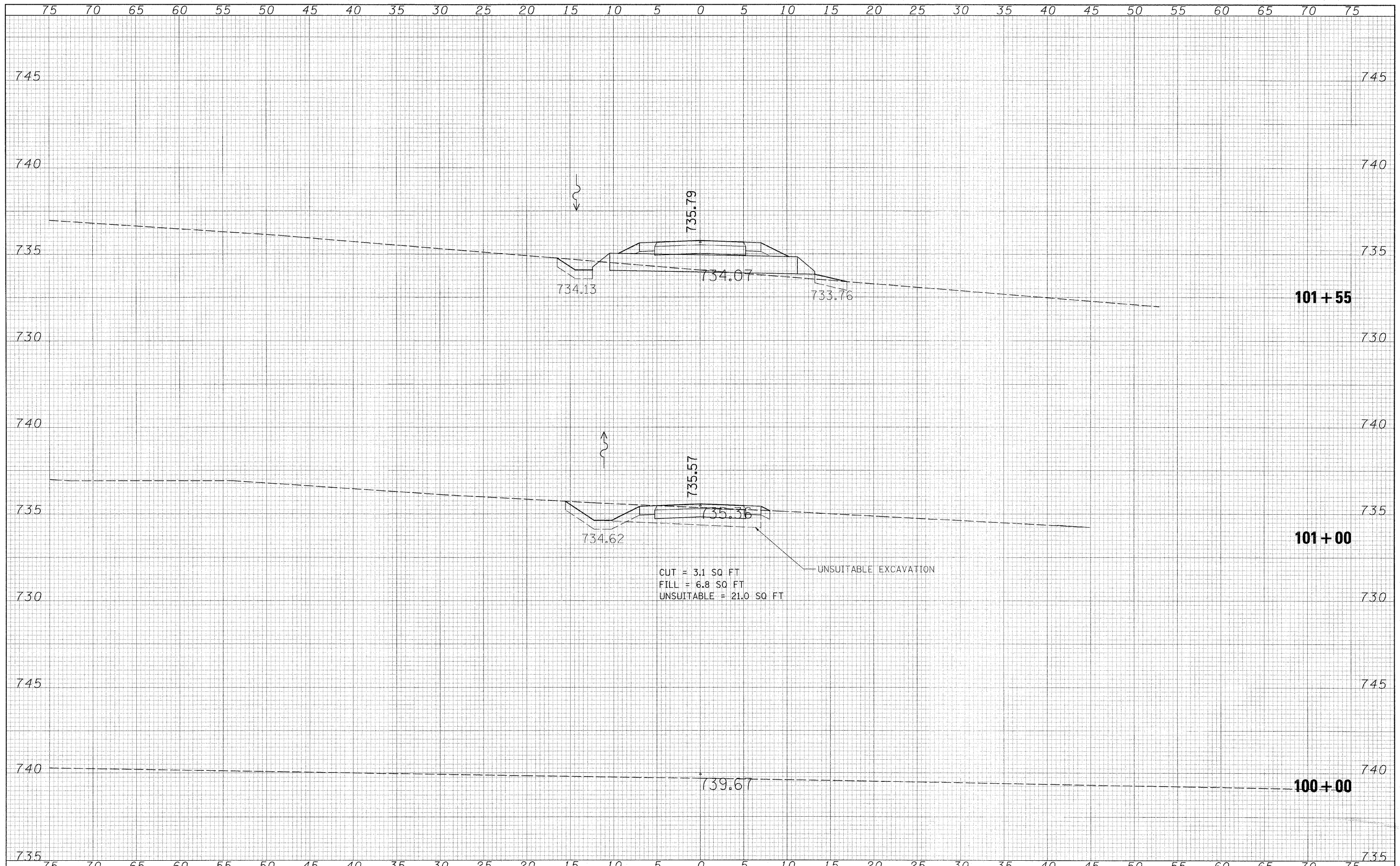
**PRUNING FOR SAFETY AND
EQUIPMENT CLEARANCE**

SCALE: NONE SHEET NO. 1 OF 1 SHEETS STA. TO STA.

F.A. RTE.	SECTION	COUNTY	TOTAL SHEETS	SHEET NO.
	08-F3000-10-BT	DuPage	20	12
BM-20			CONTRACT NO. 63710	
FED. ROAD DIST. NO. 1 ILLINOIS FED. AID PROJECT				

DATE	
BY	
FINAL SURVEY	
NOTE BOOK	
NO.	

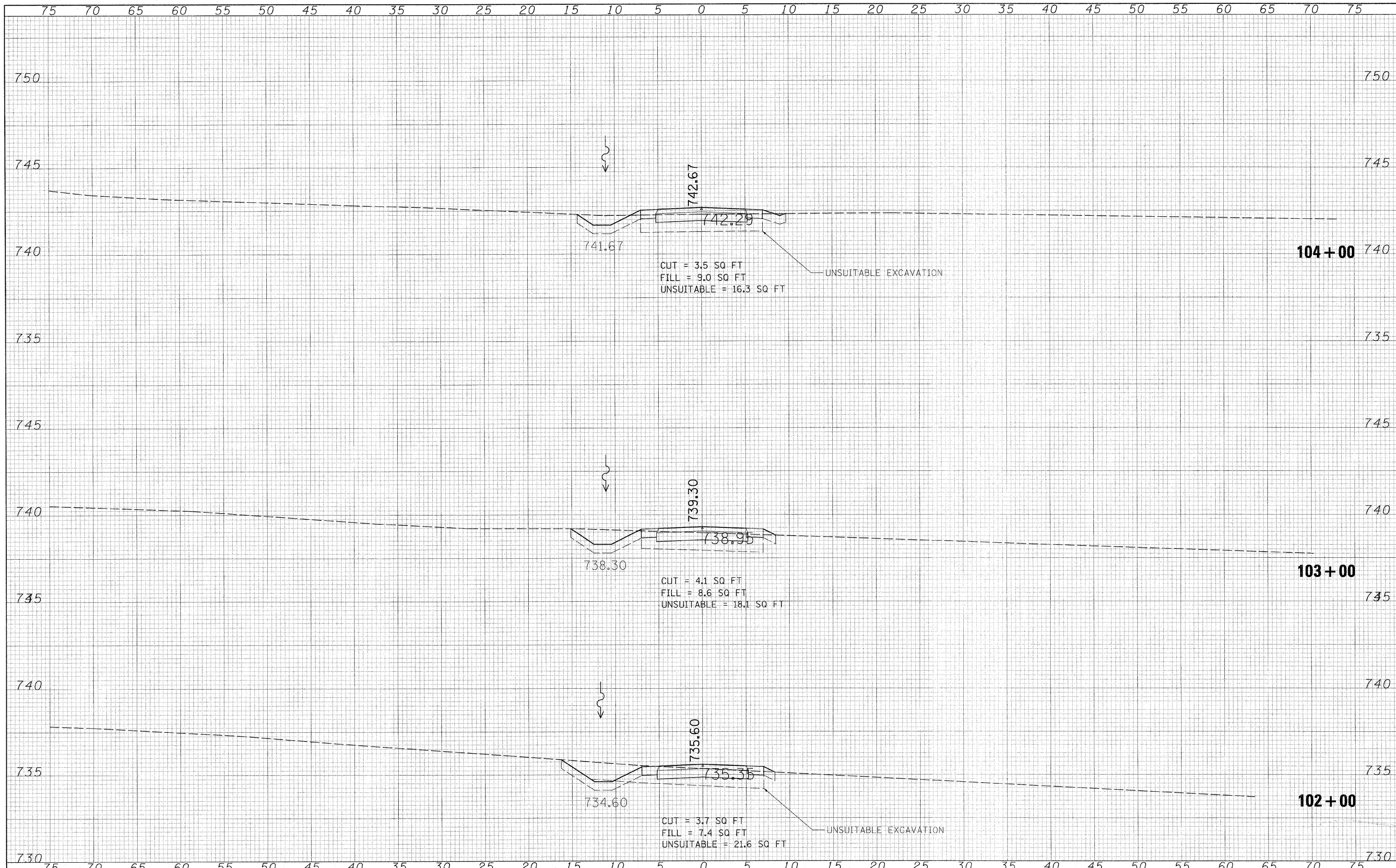
DATE	
BY	
ORIGINAL SURVEY	
NOTE BOOK	
NO.	



FILE NAME =	USER NAME = #USER#	DESIGNED -	REVISED -	ILLINOIS DEPARTMENT OF TRANSPORTATION DIVISION OF HIGHWAYS	CROSS SECTIONS BIKE TRAIL				F.A. RTE.	SECTION	COUNTY	TOTAL SHEETS	SHEET NO.
#FILE#		DRAWN -	REVISED -		SCALE:	SHEET NO.	OF	SHEETS	STA. 100+00	TO STA. 101+55	DUPAGE	20	13
		CHECKED -	REVISED -								CONTRACT NO.	63710	
		DATE - 4/10/12	REVISED -								ILLINOIS FED. AID PROJECT		

DATE	
BY	
SURVEYED	
PLOTTED	
NOTE BOOK	
AREAS CHECKED	
NO.	

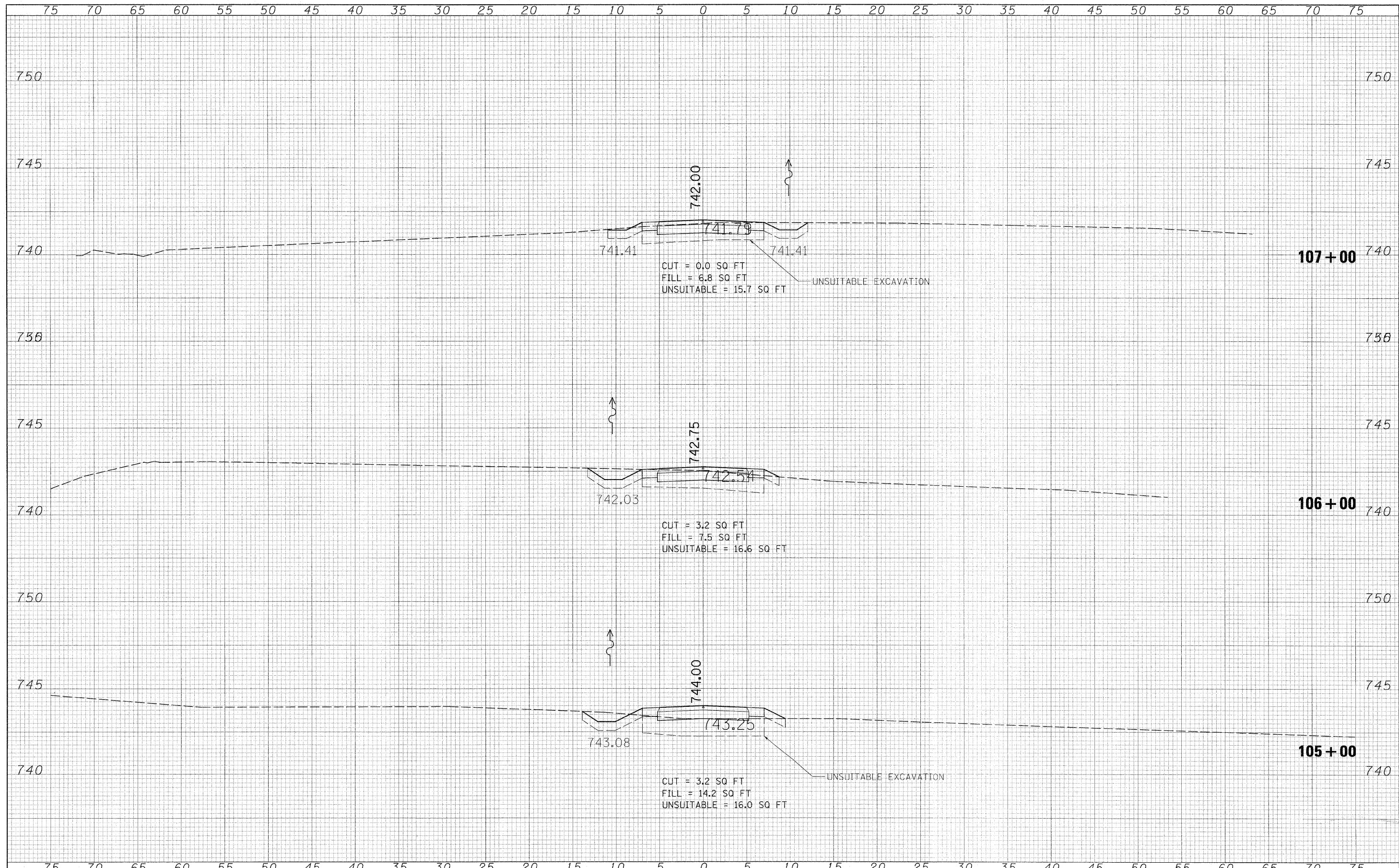
DATE	
BY	
ORIGINAL SURVEY	
PLOTTED	
NOTE BOOK	
AREAS CHECKED	
NO.	



FILE NAME =	USER NAME = #USER#	DESIGNED -	REVISED -	ILLINOIS DEPARTMENT OF TRANSPORTATION DIVISION OF HIGHWAYS	CROSS SECTIONS BIKE TRAIL				F.A. RTE.	SECTION	COUNTY	TOTAL SHEETS	SHEET NO.	
#FILE#		DRAWN -	REVISED -		SCALE:	SHEET NO.	OF	SHEETS	STA. 102+00	TO STA. 104+00	DUPAGE	20	14	
		CHECKED -	REVISED -								CONTRACT NO.	63710		
		DATE - 4/10/12	REVISED -								ILLINOIS FED. AID PROJECT			

DATE	
BY	
FINAL SURVEY	
PLOTTED	
NOTE BOOK	
AREAS CHECKED	
NO.	

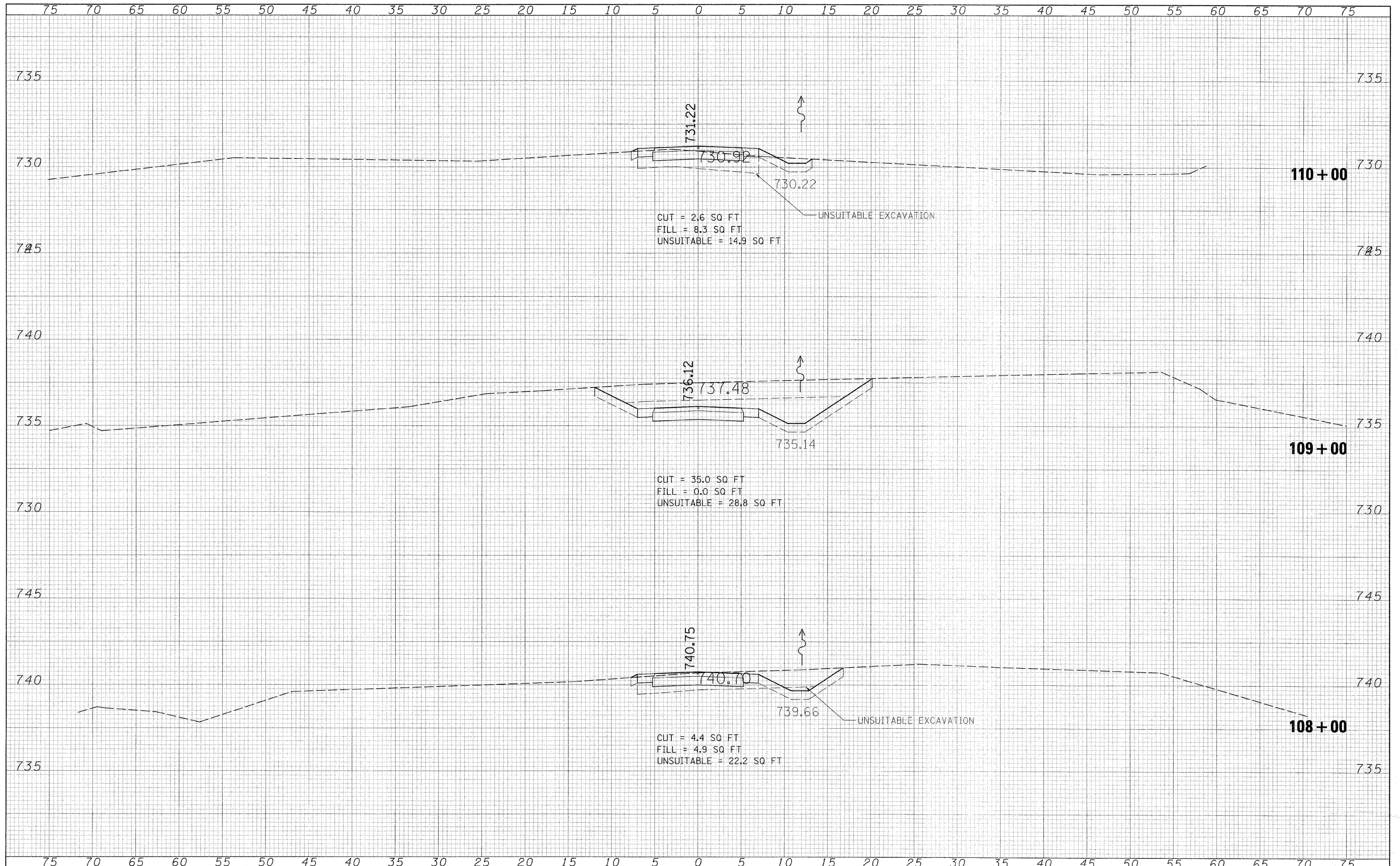
DATE	
BY	
ORIGINAL SURVEY	
PLOTTED	
NOTE BOOK	
AREAS CHECKED	
NO.	



FILE NAME -	USER NAME = #USER#	DESIGNED -	REVISED -	ILLINOIS DEPARTMENT OF TRANSPORTATION DIVISION OF HIGHWAYS	CROSS SECTIONS BIKE TRAIL				F.A. RTE.	SECTION	COUNTY	TOTAL SHEETS	SHEET NO.
#FILEL#		DRAWN -	REVISED -		SCALE:	SHEET NO.	OF	SHEETS	STA. 105+00	TO STA. 107+00	DUPAGE	20	15
		CHECKED -	REVISED -								CONTRACT NO.	63710	
		DATE - 4/10/12	REVISED -								ILLINOIS FED. AID PROJECT		

DATE	
BY	
FINAL SURVEY	
SURVEYED	
PLOTTED	
NOTE BOOK	
AREAS CHECKED	
NO.	

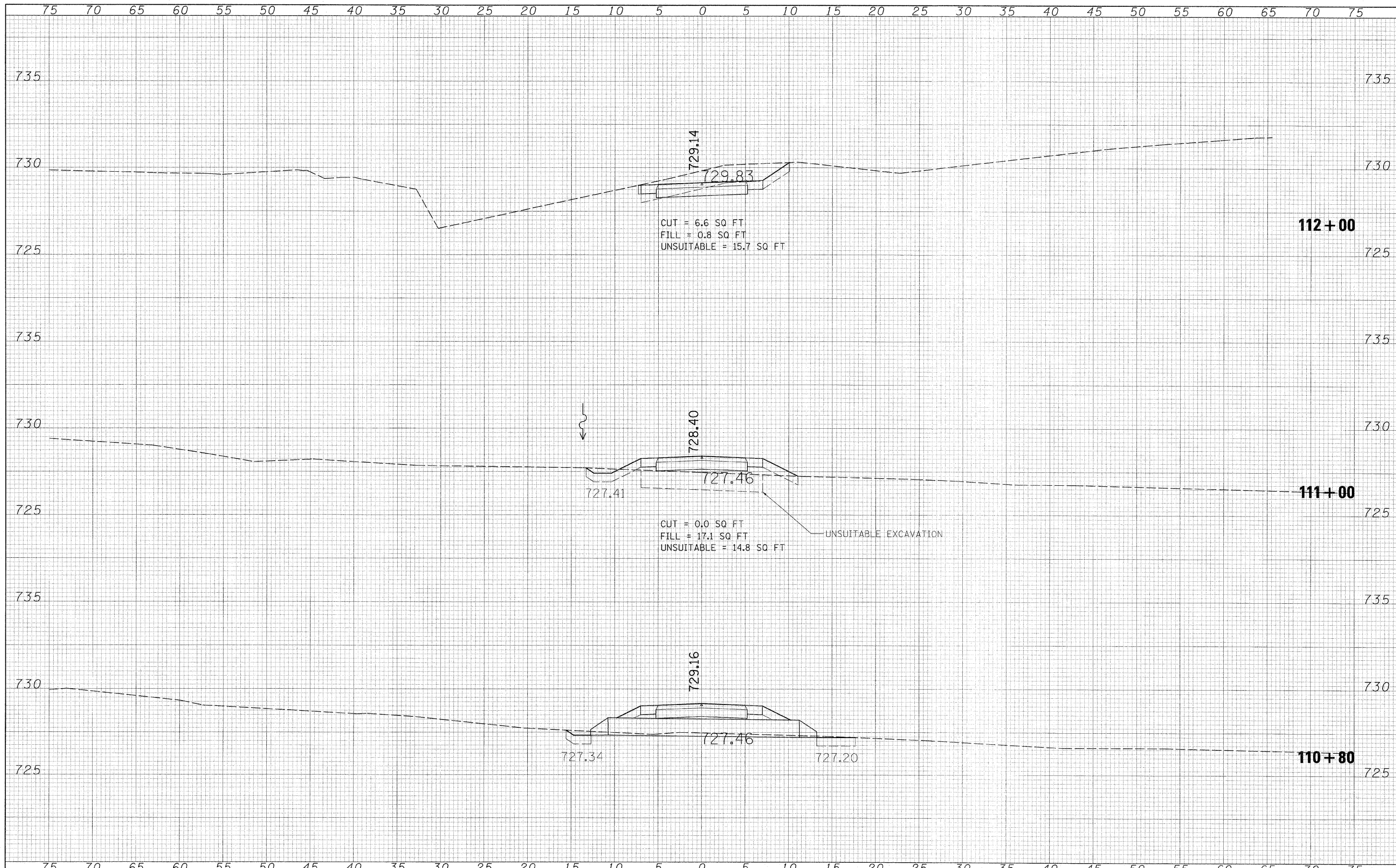
DATE	
BY	
ORIGINAL SURVEY	
SURVEYED	
PLOTTED	
NOTE BOOK	
AREAS CHECKED	
NO.	



FILE NAME =	USER NAME = #USER#	DESIGNED -	REVISED -	ILLINOIS DEPARTMENT OF TRANSPORTATION DIVISION OF HIGHWAYS	CROSS SECTIONS BIKE TRAIL				F.A. RTE.	SECTION	COUNTY	TOTAL SHEETS	SHEET NO.	
#FILE#		DRAWN -	REVISED -		SCALE:	SHEET NO.	OF	SHEETS	STA. 108+00	TO STA. 110+00	DUPAGE	20	16	
		CHECKED -	REVISED -											
		DATE - 4/10/12	REVISED -											
													CONTRACT NO. 63710	
													ILLINOIS FED. AID PROJECT	

DATE	
BY	
SURVEYED	
PLANNED	
TEMPLATE	
AREAS	
CHECKED	
NO.	

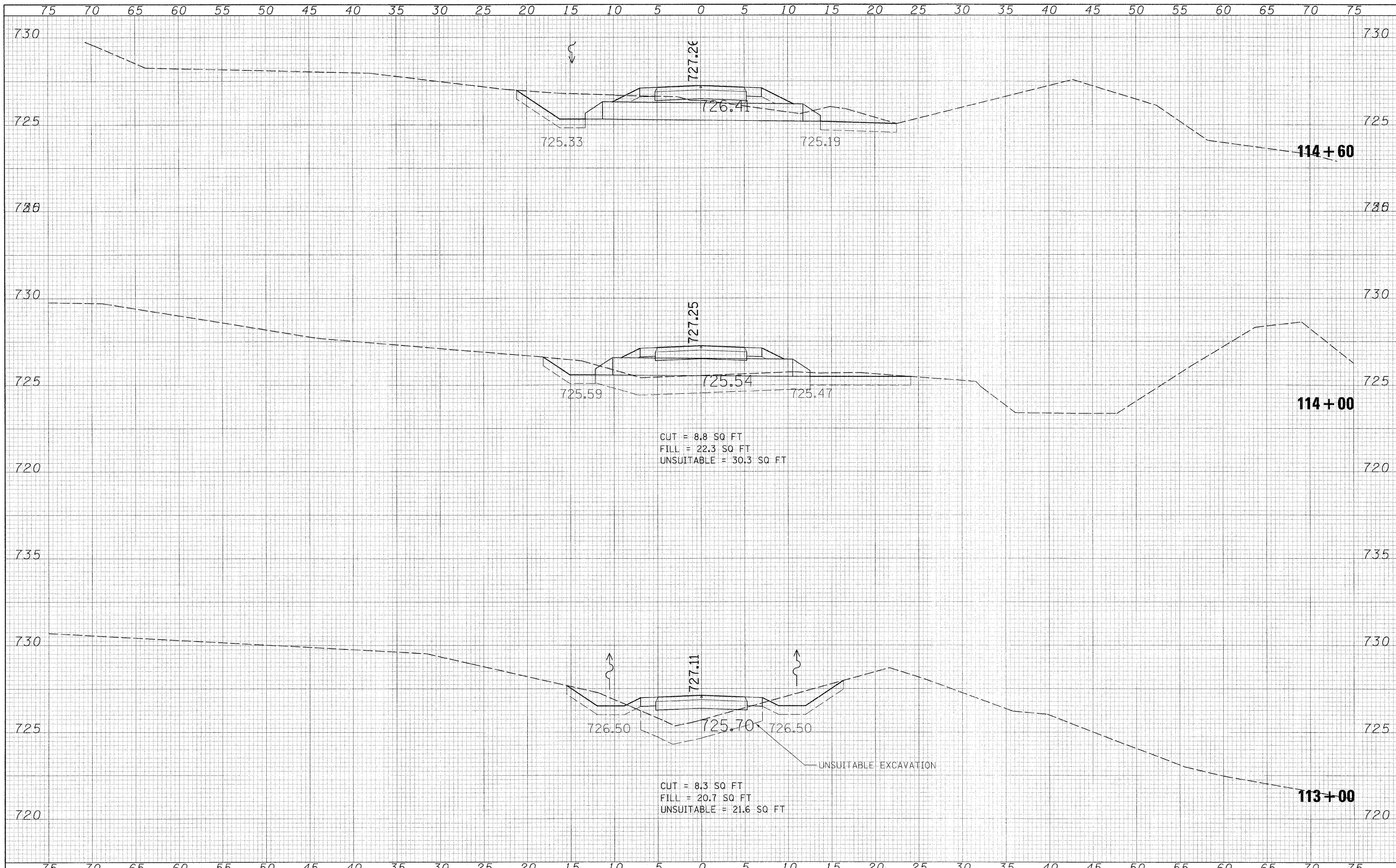
DATE	
BY	
SURVEYED	
PLANNED	
TEMPLATE	
AREAS	
CHECKED	
NO.	



FILE NAME	USER NAME - #USER#	DESIGNED -	REVISED -	ILLINOIS DEPARTMENT OF TRANSPORTATION DIVISION OF HIGHWAYS	CROSS SECTIONS BIKE TRAIL			F.A. RTE.	SECTION	COUNTY	TOTAL SHEETS	SHEET NO.	
*FILE#		DRAWN -	REVISED -		SCALE:	SHEET NO.	OF	SHEETS	STA. 110+80	TO STA. 112+00	DUPAGE	20	17
		CHECKED -	REVISED -								CONTRACT NO.	63710	
		DATE - 4/10/12	REVISED -								ILLINOIS FED. AID PROJECT		

FINAL SURVEY	DATE
SURVEYED	
NOTE BOOK	
NO.	
TEMPLATE	
AREAS CHECKED	

ORIGINAL SURVEY	DATE
SURVEYED	
NOTE BOOK	
NO.	
TEMPLATE	
AREAS CHECKED	



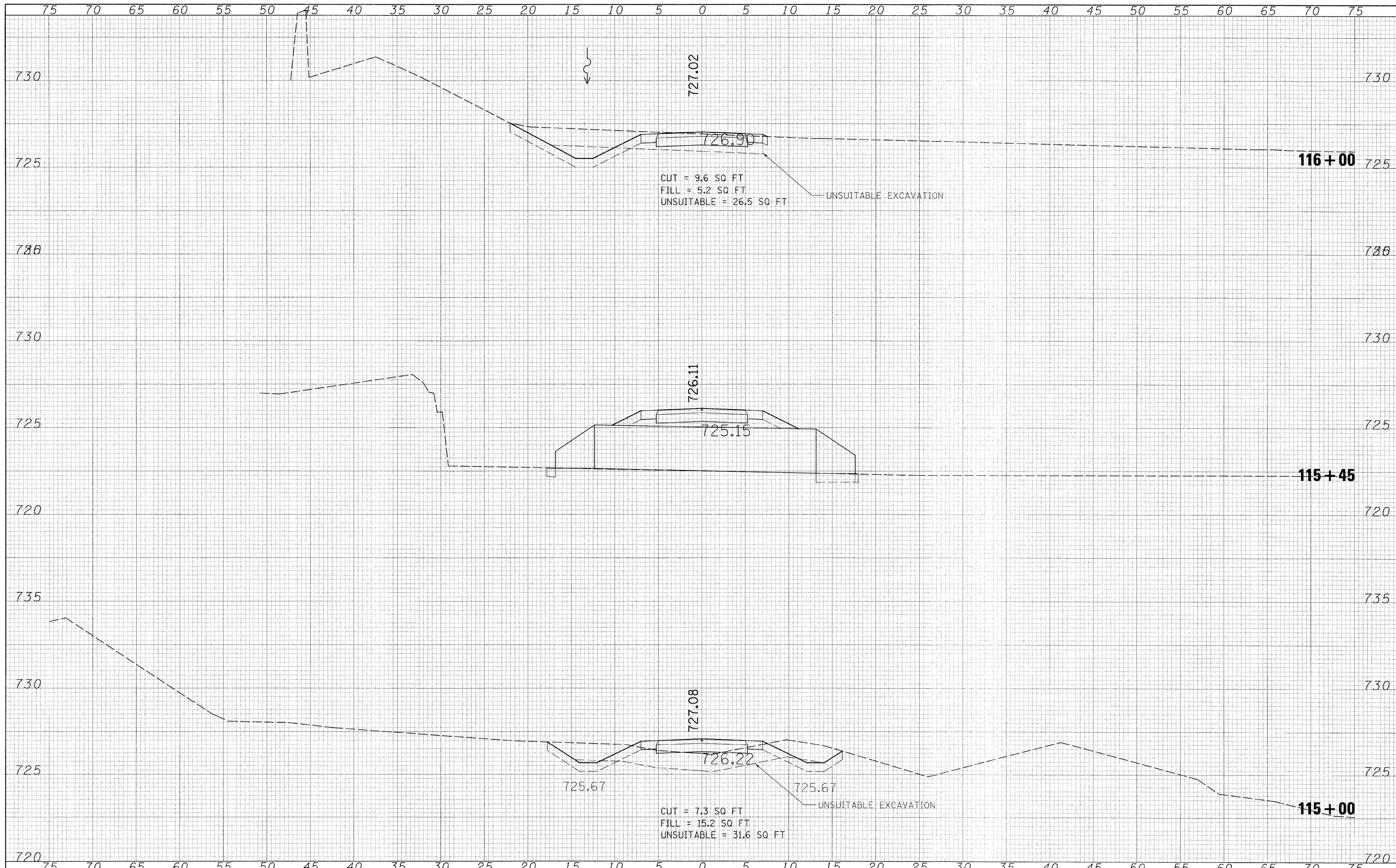
CUT = 8.8 SQ FT
 FILL = 22.3 SQ FT
 UNSUITABLE = 30.3 SQ FT

CUT = 8.3 SQ FT
 FILL = 20.7 SQ FT
 UNSUITABLE = 21.6 SQ FT

FILE NAME =	USER NAME = #USER#	DESIGNED -	REVISED -	ILLINOIS DEPARTMENT OF TRANSPORTATION DIVISION OF HIGHWAYS	CROSS SECTIONS BIKE TRAIL				F.A. RTE.	SECTION	COUNTY	TOTAL SHEETS	SHEET NO.
*FILE#		DRAWN -	REVISED -		SCALE:	SHEET NO.	OF	SHEETS	STA. 113+00	TO STA. 114+60	DUPAGE	20	18
		CHECKED -	REVISED -								CONTRACT NO.	63710	
		DATE - 4/10/12	REVISED -								ILLINOIS FED. AID PROJECT		

DATE	BY
SURVEYED	BY
NOTE BOOK	NO.
TEMPERATURE	
AREAS	CHECKED
AREAS	CHECKED

DATE	BY
SURVEYED	BY
NOTE BOOK	NO.
TEMPERATURE	
AREAS	CHECKED
AREAS	CHECKED



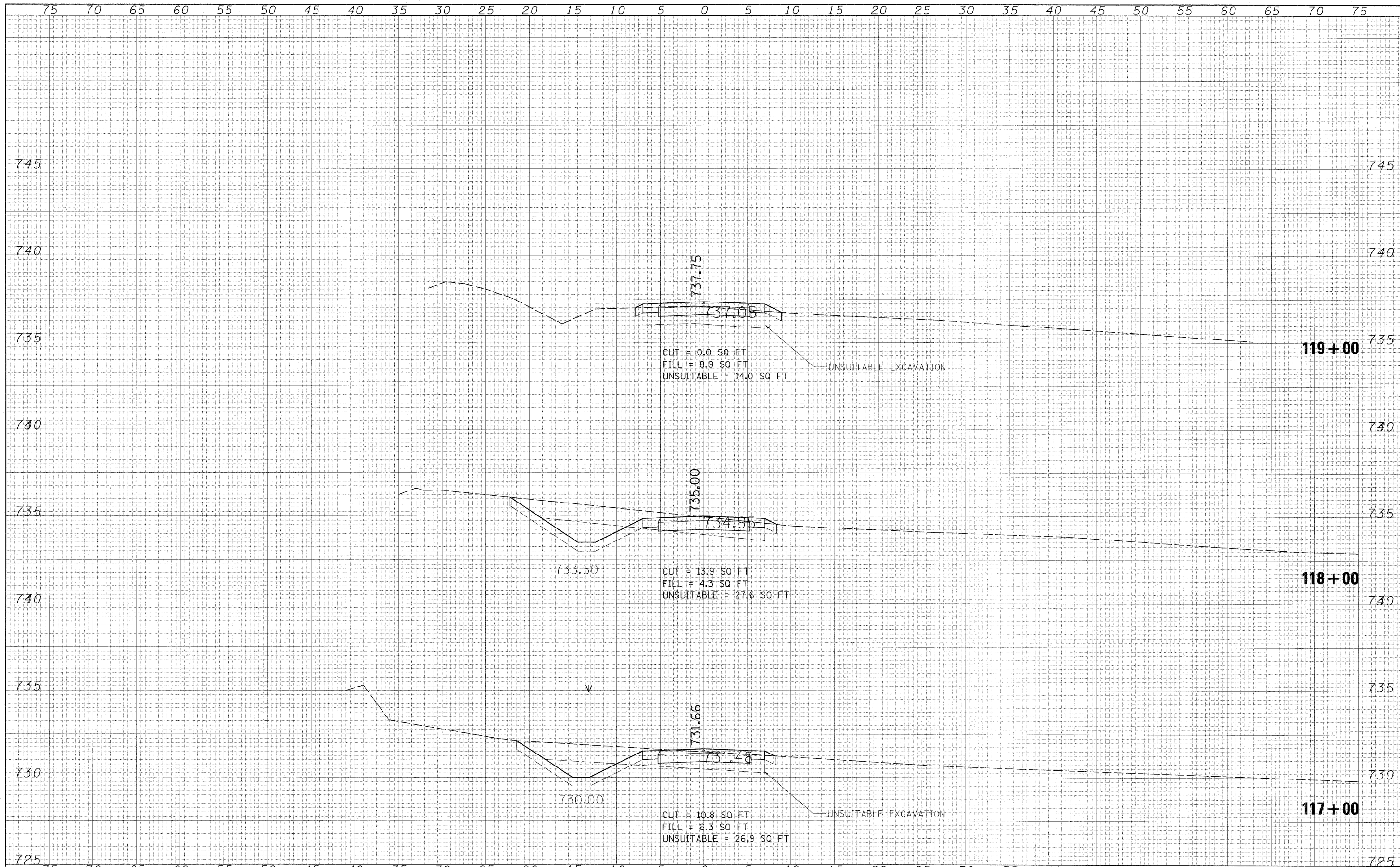
CUT = 9.6 SQ FT
 FILL = 5.2 SQ FT
 UNSUITABLE = 26.5 SQ FT

CUT = 7.3 SQ FT
 FILL = 15.2 SQ FT
 UNSUITABLE = 31.6 SQ FT

FILE NAME =	USER NAME = #USER#	DESIGNED -	REVISED -	ILLINOIS DEPARTMENT OF TRANSPORTATION DIVISION OF HIGHWAYS	CROSS SECTIONS BIKE TRAIL				F.A. RTE.	SECTION	COUNTY	TOTAL SHEET NO.	
#FILE#		DRAWN -	REVISED -		SCALE:	SHEET NO.	OF	SHEETS	STA. 115+00	TO STA. 116+00	DUPAGE	20	19
		CHECKED -	REVISED -								CONTRACT NO.	63710	
		DATE - 4/10/12	REVISED -								ILLINOIS FED. AID PROJECT		

DATE	
BY	
SURVEYED	
TABLE	
NO. OF	
AREAS	
CHECKED	
FINAL	
NOTE	
BOOK	
NO.	

DATE	
BY	
SURVEYED	
TABLE	
NO. OF	
AREAS	
CHECKED	
ORIGINAL	
NOTE	
BOOK	
NO.	



FILE NAME =	USER NAME = #USER#	DESIGNED -	REVISED -	ILLINOIS DEPARTMENT OF TRANSPORTATION DIVISION OF HIGHWAYS	CROSS SECTIONS BIKE TRAIL				F.A. RTE.	SECTION	COUNTY	TOTAL SHEETS	SHEET NO.	
FILEL		DRAWN -	REVISED -		SCALE:	SHEET NO.	OF	SHEETS	STA. 117+00	TO STA. 119+00	DUPAGE	20	20	
		CHECKED -	REVISED -								CONTRACT NO.	63710		
		DATE - 4/10/12	REVISED -								ILLINOIS FED. AID PROJECT			