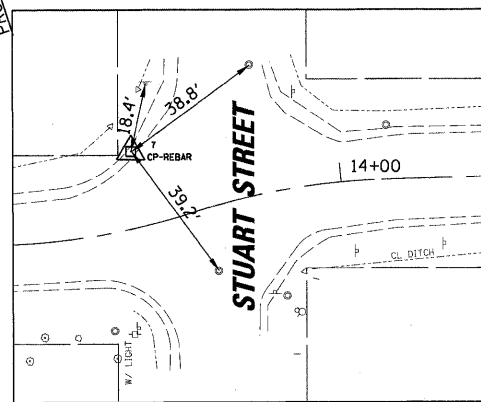
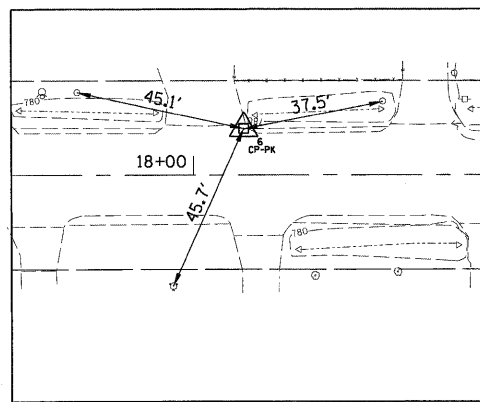


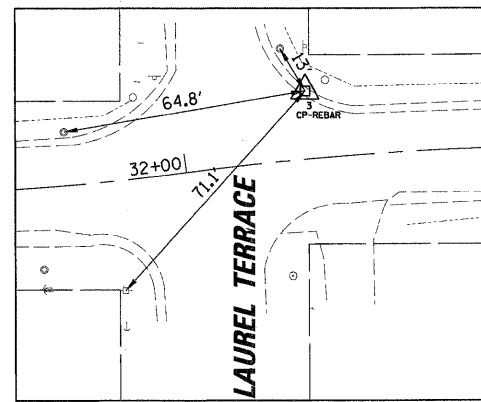
CONTROL POINT 8



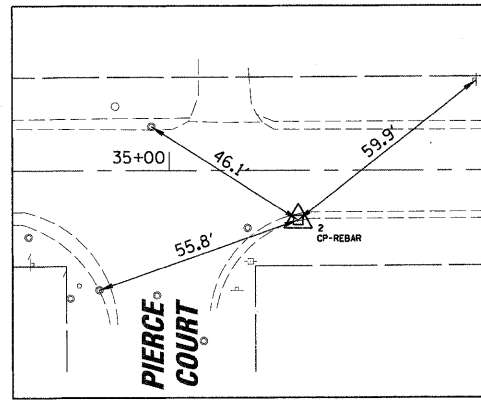
CONTROL POINT 7



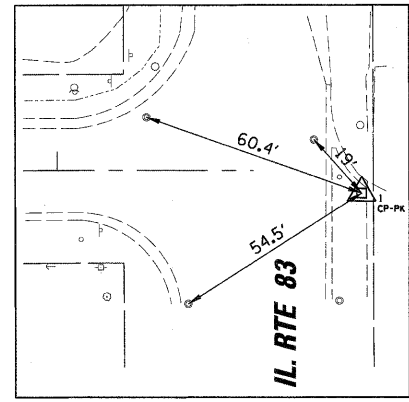
CONTROL POINT 6



CONTROL POINT 3



CONTROL POINT 2



CONTROL POINT 1

207288.06
1062519.89

HORIZONTAL CONTROL POINTS					
CP NO.	NORTHING (Y)	EASTING (X)	DESCRIPTION	STATION	OFFSET
CP 1	2,072,319.76	1,065,398.01	PK	-	-
CP 2	2,072,312.17	1,065,051.53	REBAR	35+34.09	13.16 RT
CP 3	2,072,339.63	1,064,749.15	REBAR	32+33.28	18.01 LT
CP 6	2,072,321.57	1,063,331.27	PK	18+13.29	12.32 LT
CP 7	2,072,314.20	1,062,862.34	REBAR	13+47.78	20.06 LT
CP 8	2,072,261.46	1,062,552.05	X-CUT	10+32.20	26.56 RT

ALIGNMENT POINTS					
STATION	OFFSET	NORTHING (Y)	EASTING (X)	DESCRIPTION	
10+00.00	CL	2,072,288.06	1,062,519.89	POT	
11+94.15	CL	2,072,287.79	1,062,714.03	PC	
13+09.02	CL	2,072,289.43	1,062,828.89	PCC	
13+60.09	CL	2,072,298.14	1,062,879.04	PRC	
14+10.71	CL	2,072,306.83	1,062,928.74	PCC	
15+13.97	CL	2,072,308.62	1,063,031.98	PT	
31+11.40	CL	2,072,312.05	1,064,629.40	PC	
32+01.32	CL	2,072,318.11	1,064,719.05	PRC	
33+05.50	CL	2,072,325.08	1,064,822.93	PT	
38+51.99	CL	2,072,325.71	1,065,369.41	POT	

ELEVATION BENCHMARKS DATUM:NAVD '88 (GPS OBSERVED)		
NO.	DESCRIPTION	ELEV.
OSBM 1	RAILROAD SPIKE IN NORTHERLY FACE OF WOOD LIGHT POLE AT THE SOUTHWEST CORNER OF IL RT. 83 (BARRON BLVD.) & HIGHLAND RD.	773.63
OSBM 2	RAILROAD SPIKE IN NORTHERLY FACE OF WOOD LIGHT POLE ON THE SOUTH SIDE OF HIGHLAND RD. AND EASTERLY OF HOUSE #337 HIGHLAND RD.	775.06
OSBM 3	SOUTHEAST CORNER OF CONC. STEP (FIRST STEP UP FROM WALK) LOCATED AT HOUSE #284 HIGHLAND RD.	777.65
OSBM 4	SOUTHWESTERLY CORNER OF CONC. STEP (FIRST STEP UP FROM WALK) LOCATED AT HOUSE #701 LAKE ST.	782.38

CURVE #1
P.C. STA. 11+94.15
P.C.C. STA. 13+09.02
LENGTH = 114.87'
RADIUS = 3,660'
e = N.C.

CURVE #2
P.C. STA. 13+09.02
P.C.C. STA. 13+09.09
LENGTH = 51.07'
RADIUS = 180'
e = N.C.

CURVE #3
P.R.C. STA. 13+60.09
P.C.C. STA. 14+10.71
LENGTH = 50.62'
RADIUS = 180'
e = N.C.

CURVE #4
P.C.C. STA. 14+10.71
P.T. STA. 15+13.97
LENGTH = 103.26'
RADIUS = 3,401'
e = N.C.

CURVE #5
P.C. STA. 31+11.40
P.R.C. STA. 32+01.32
LENGTH = 89.92'
RADIUS = 688'
e = N.C.

CURVE #6
P.R.C. STA. 32+01.32
P.T. STA. 33+05.50
LENGTH = 104.18'
RADIUS = 791'
e = N.C.