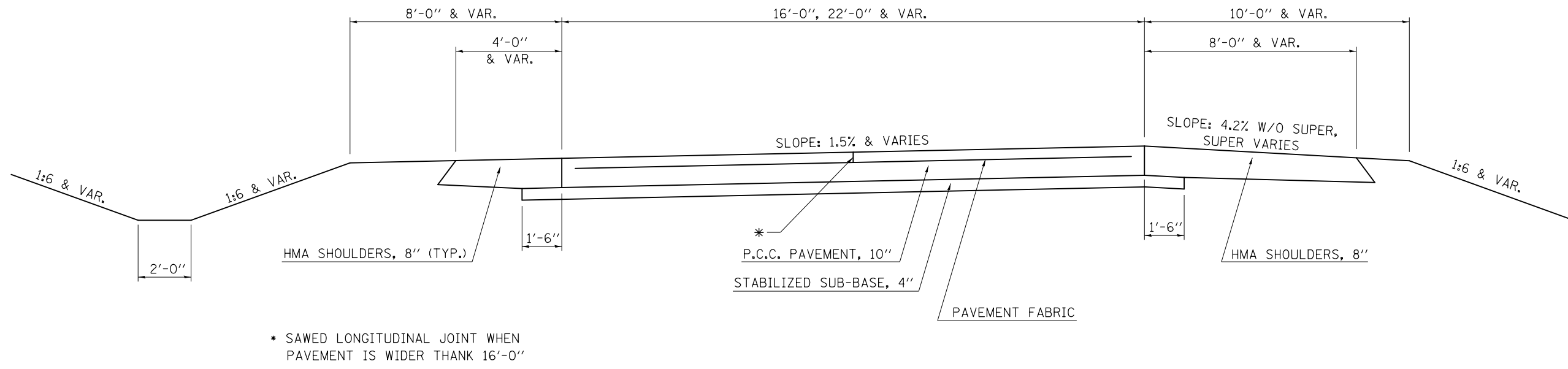
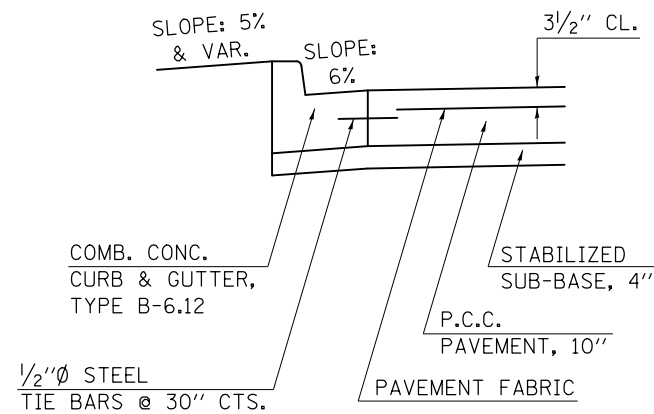


1 EXISTING TYPICAL CROSS SECTION

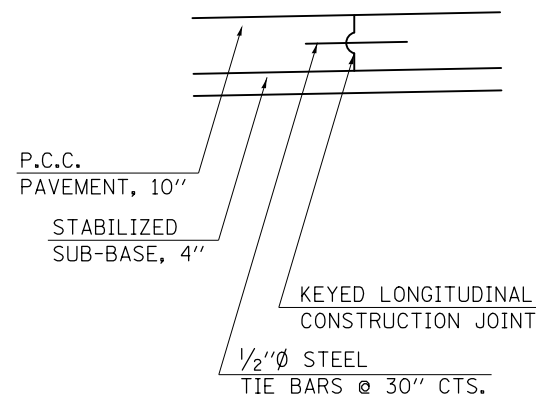
STATION	TO	STATION
100+00.00		160+80.55 (TRUCK)
207+88.89		222+43.72 (AUTO)



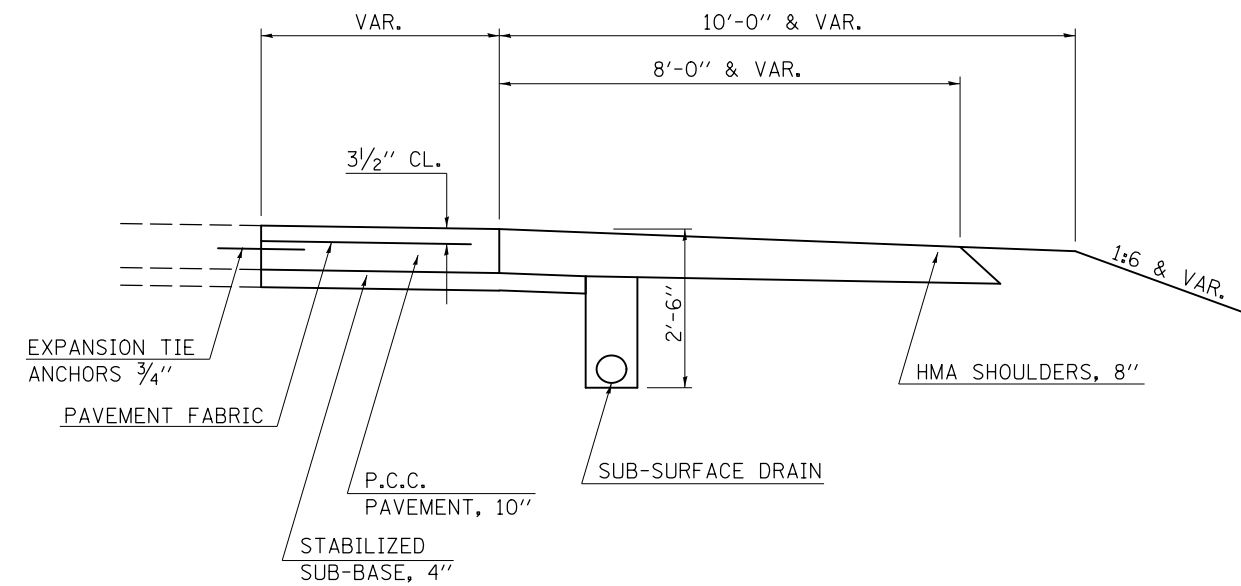
DETAIL OF P.C.C. PAVEMENT ADJACENT TO COMB. CONC. CURB & GUTTER TYPE B-6.12



DETAIL OF TRUCK RAMP ABUTTING PARKING PAVEMENT



DETAIL OF PREVIOUSLY WIDENED P.C.C. PAVEMENT



FILE NAME =	USER NAME = hogenbj	DESIGNED - BJM	REVISED -
et:\pwork\pwork\hogenbj\d0294537\0570169-sht-typicals.dgn		DRAWN -	REVISED -
	PLOT SCALE = 40.0000' / in.	CHECKED -	REVISED -
	PLOT DATE = 3/5/2012	DATE - 02/14/12	REVISED -

STATE OF ILLINOIS
DEPARTMENT OF TRANSPORTATION

TYPICAL CROSS SECTIONS			
SCALE:	SHEET 1	OF 2 SHEETS	STA. TO STA.

F.A.I. RTE.	SECTION	COUNTY	TOTAL SHEETS	SHEET NO.
74	REST AREA REPAIR 2012-2	VERMILION	19	6
CONTRACT NO. 70969				
ILLINOIS FED. AID PROJECT				