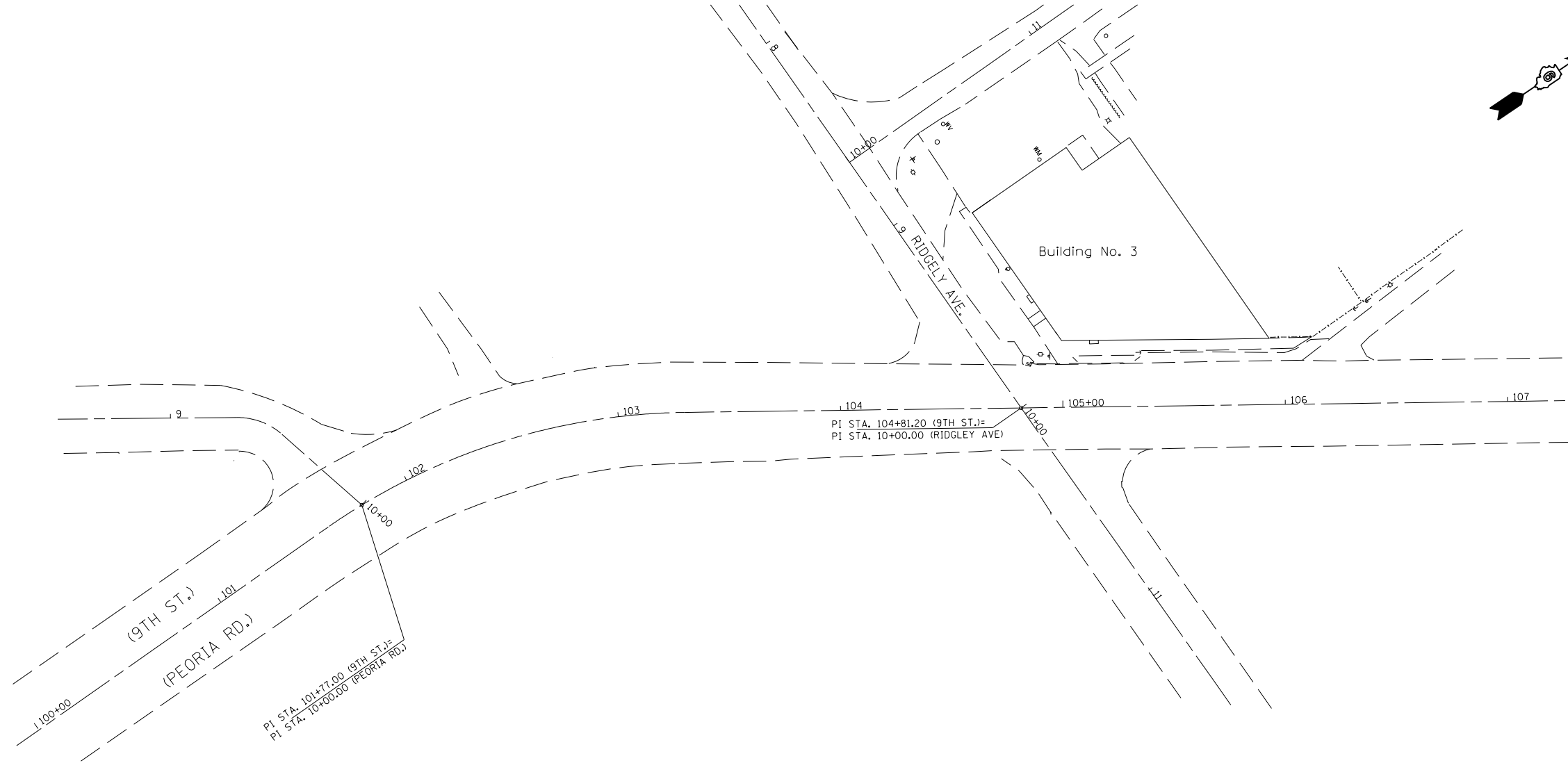


# PARCEL NUMBER 6148115



## QUANTITIES

BUILDING REMOVAL NO. 3	1	L	SUM
REM & DISPOSAL OF NON-FRIABLE ASBESTOS, BUILDING NO. 3	1	L	SUM
REM & DISPOSAL OF FRIABLE ASBESTOS, BUILDING NO. 3	1	L	SUM

FILE NAME =	USER NAME = sparksgw	DESIGNED -	REVISED -	<b>STATE OF ILLINOIS DEPARTMENT OF TRANSPORTATION</b>	<b>PARCEL NO. 6148115 BUILDING DEMOLITION - (PEORIA RD/9TH ST) AT RIDGELY AVE</b>			F.A.P. RTE.	SECTION	COUNTY	TOTAL SHEETS	SHEET NO.
et:\pw\work\p\idot\sparksgw\10265528\0672E45-sht-plan.dgn		DRAWN -	REVISED -		666	(SP 2), DM	SANGAMON	19	10	<b>CONTRACT NO. 72E45</b>		
	PLOT SCALE = 40.0000' / in.	CHECKED -	REVISED -		SCALE: 1" = 20"	SHEET 10	OF 19 SHEETS	STA.	TO STA.	ILLINOIS FED. AID PROJECT		
	PLOT DATE = Mar-26-2012 01:47:43PM	DATE -	REVISED -									