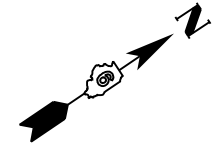
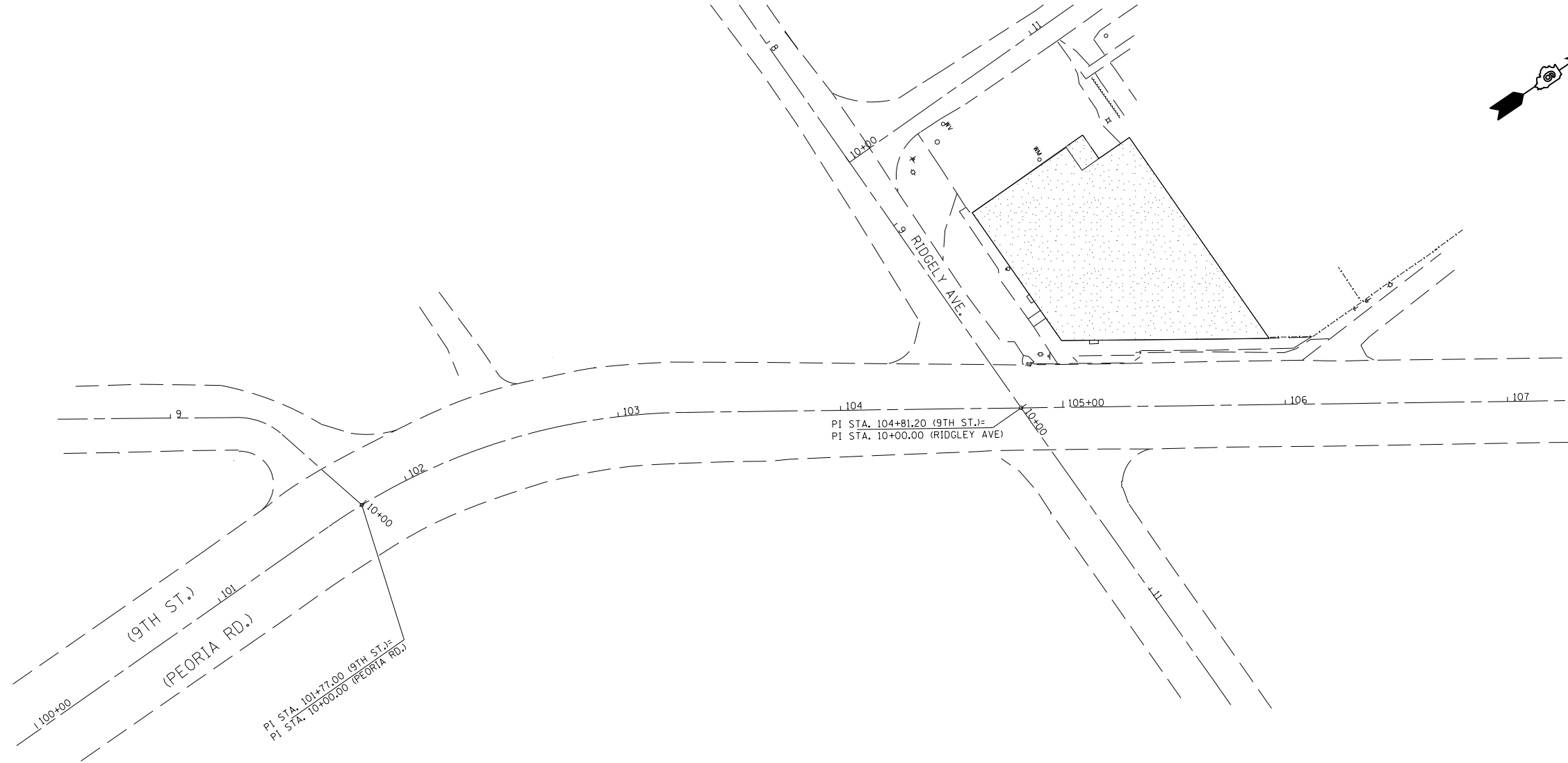


PARCEL NUMBER 6148115



QUANTITIES

SEEDING, CLASS 2	.07 ACRE
NITROGEN FERTILIZER NUTRIENT	6.3 POUND
PHOSPHORUS FERTILIER NUTRIENT	6.3 POUND
POTASSIUM FERTILIZER NUTRIENT	6.3 POUND
MULCH, METHOD 3	.07 ACRE

 SEEDING, CLASS 2

FILE NAME = c:\pwork\pwork\pwork\sparksgw\0265528\0672E45-sht-plan.dgn	USER NAME = sparksgw	DESIGNED -	REVISED -	STATE OF ILLINOIS DEPARTMENT OF TRANSPORTATION	PARCEL NO. 6148115		F.A.P. RTE.	SECTION	COUNTY	TOTAL SHEETS	SHEET NO.
	PLOT SCALE = 40.0000' / in.	CHECKED -	REVISED -		SEEDING PLAN - (PEORIA RD/9TH ST) AT RIDGELY AVE		666	(SP Z), DM	SANGAMON	19	13
PLOT DATE = Mar-26-2012 01:47:45PM	DATE -	REVISED -	SCALE: 1" = 20"		SHEET 13	OF 19 SHEETS	STA.	TO STA.	CONTRACT NO. 72E45		
ILLINOIS FED. AID PROJECT											