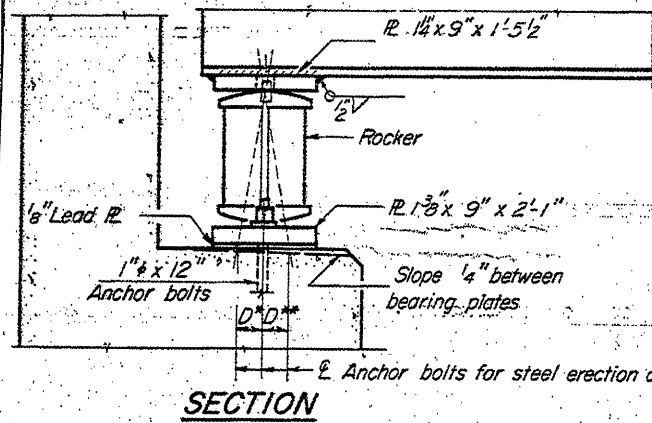
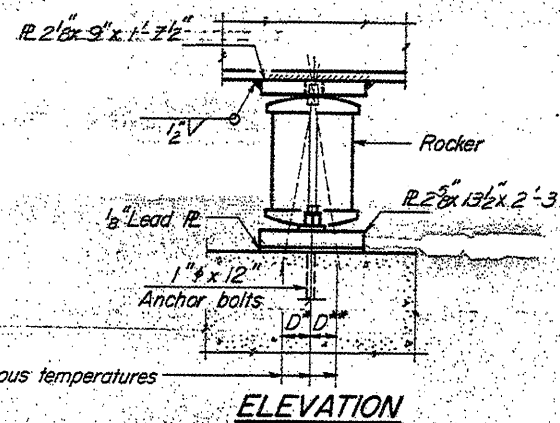


STATE OF ILLINOIS
DEPARTMENT OF TRANSPORTATION

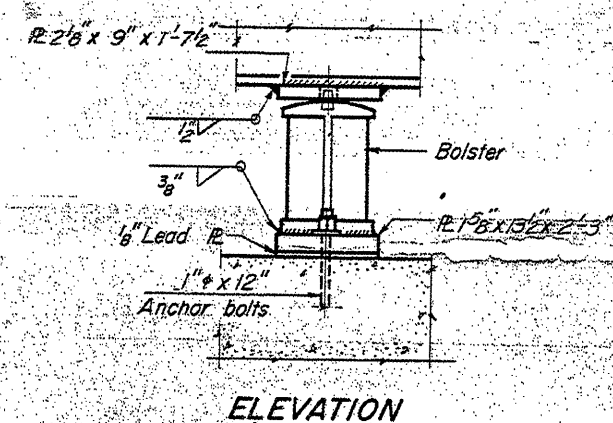
ROUTE NO.	SECTION
411	3-9B-3(1)
FED. ROAD DIST. NO.	ILLINOIS



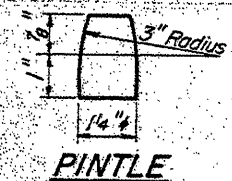
SECTION



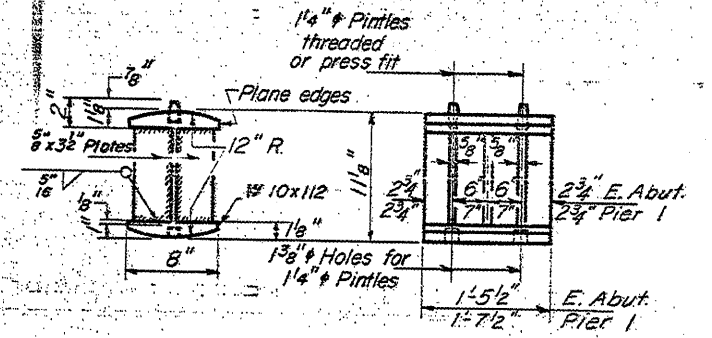
ELEVATION



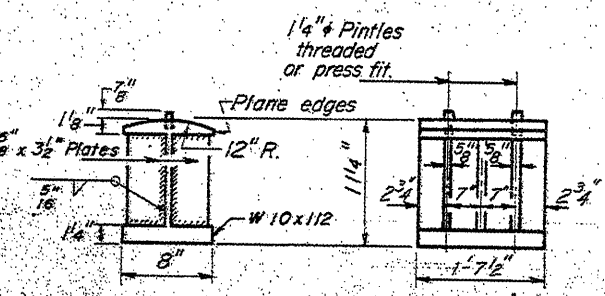
ELEVATION



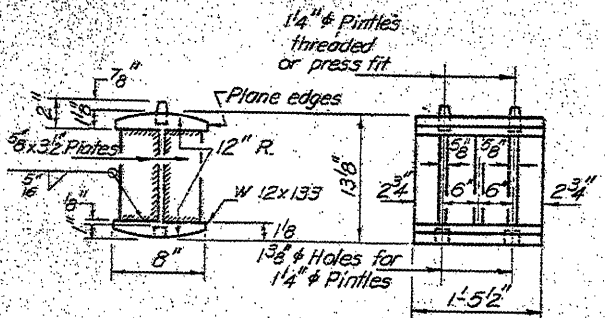
PINTLE



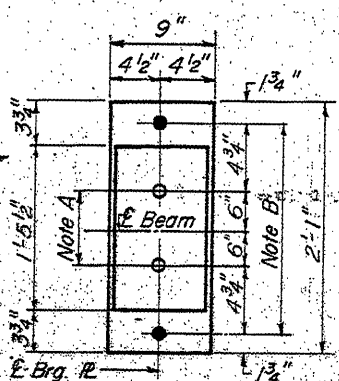
ROCKER AT
E. ABUTMENT & PIER 1



BOLSTER AT
PIER 2

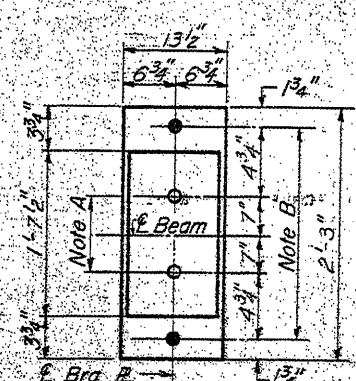


ROCKER AT
W. ABUTMENT



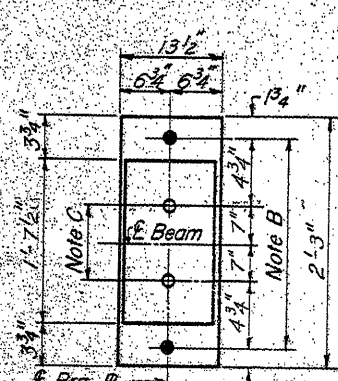
PLAN

AT ABUTMENTS



PLAN

AT PIER 1



PLAN

AT PIER 2

NOTE A
1 3/8" Holes - 1" deep in top IR
for pintles. Thread or press-fit
pintles into bottom IR.

NOTE B
1 1/2" Holes for 1" anchor bolts.
1 1/2 x 2 1/2 x 2 1/2 IR Washers
under nut.

NOTE C
1 3/8" Holes 1" deep in top IR
only for 1 1/4" pintles.

BEARING ASSEMBLY DETAILS

NOTES ON SETTING OF ANCHOR BOLTS AT EXP. BRGS.

(Side of brg. away from fixed brg.)
D* = 1/8" per each 100' of expansion for
every 15° fall below the normal temp.
of 50°F.
(Side of brg. toward fixed brg.)
D** = 1/8" per each 100' of expansion for
every 15° rise above the normal temp.
of 50°F.
If beams have been erected and dimensions D* or D**
determined, holes shall be drilled and anchor bolts shall
be grouted in place. All fixed anchor bolts may be built
into the masonry.

FOR INFORMATION ONLY

TYPICAL BRIDGE PALNS
FAI 72 (I-72)
(86-9) BRIDGE PAINTING
SCOTT COUNTY