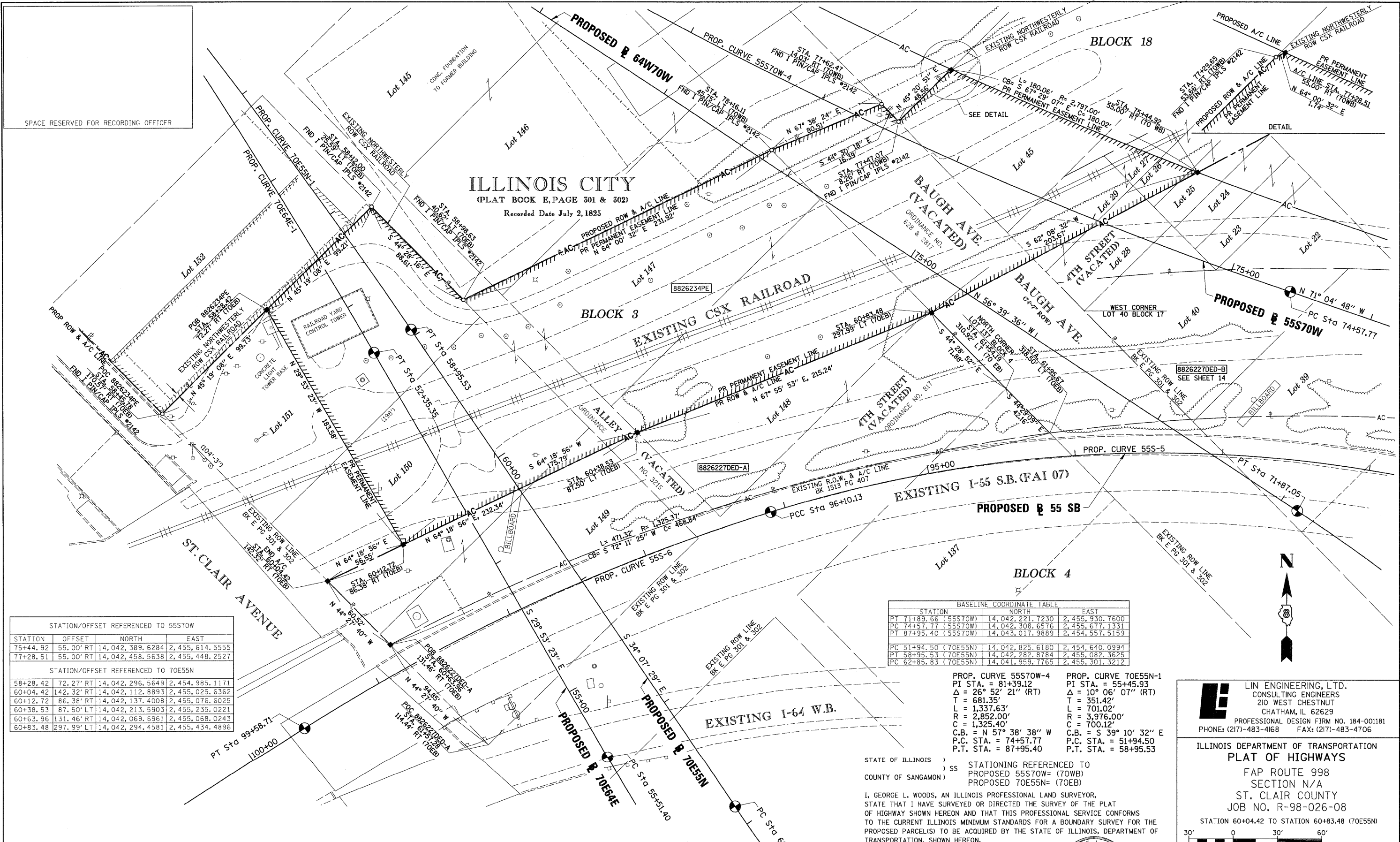


PART OF THE SW 14 OF SECTION 7, T2N, R9W OF THE 3RD PM, ST. CLAIR COUNTY, ILLINOIS



SPACE RESERVED FOR RECORDING OFFICER

ILLINOIS CITY
(PLAT BOOK E, PAGE 301 & 302)
Recorded Date July 2, 1825

STATION/OFFSET REFERENCED TO 55S70W			
STATION	OFFSET	NORTH	EAST
75+44.92	55.00' RT	14,042,389.6284	2,455,614.5555
77+28.51	55.00' RT	14,042,458.5638	2,455,448.2527

STATION/OFFSET REFERENCED TO 70E55N			
STATION	OFFSET	NORTH	EAST
58+28.42	72.27' RT	14,042,296.5649	2,454,985.1171
60+04.42	142.32' RT	14,042,112.8893	2,455,025.6362
60+12.72	86.38' RT	14,042,137.4008	2,455,076.6025
60+38.53	87.50' LT	14,042,213.5903	2,455,235.0221
60+63.96	131.46' RT	14,042,069.6961	2,455,068.0243
60+83.48	297.99' LT	14,042,294.4581	2,455,434.4896

STATION	BASELINE COORDINATE TABLE	
	NORTH	EAST
PT 71+89.66 (55S70W)	14,042,221.7230	2,455,930.7600
PC 74+57.77 (55S70W)	14,042,308.6576	2,455,677.1331
PT 87+95.40 (55S70W)	14,043,017.9889	2,454,557.5159
PC 51+94.50 (70E55N)	14,042,825.6180	2,454,640.0994
PT 58+95.53 (70E55N)	14,042,282.8784	2,455,082.3625
PC 62+85.83 (70E55N)	14,041,959.7765	2,455,301.3212

PROP. CURVE 55S70W-4
PI STA. = 81+39.12
Δ = 26° 52' 21" (RT)
T = 681.35'
L = 1,337.63'
R = 2,852.00'
C = 1,325.40'
C.B. = N 57° 38' 38" W
P.C. STA. = 74+57.77
P.T. STA. = 87+95.40

PROP. CURVE 70E55N-1
PI STA. = 55+45.93
Δ = 10° 06' 07" (RT)
T = 351.42'
L = 701.02'
R = 3,976.00'
C = 700.12'
C.B. = S 39° 10' 32" E
P.C. STA. = 51+94.50
P.T. STA. = 58+95.53

STATE OF ILLINOIS)
) SS STATIONING REFERENCED TO
COUNTY OF SANGAMON) PROPOSED 55S70W= (70WB)
PROPOSED 70E55N= (70EB)

I, GEORGE L. WOODS, AN ILLINOIS PROFESSIONAL LAND SURVEYOR, STATE THAT I HAVE SURVEYED OR DIRECTED THE SURVEY OF THE PLAT OF HIGHWAY SHOWN HEREON AND THAT THIS PROFESSIONAL SERVICE CONFORMS TO THE CURRENT ILLINOIS MINIMUM STANDARDS FOR A BOUNDARY SURVEY FOR THE PROPOSED PARCEL(S) TO BE ACQUIRED BY THE STATE OF ILLINOIS, DEPARTMENT OF TRANSPORTATION, SHOWN HEREON.

DATED _____
GEORGE L. WOODS, PLS NO. 3015
LICENSE EXPIRATION DATE: 11/30/2010



LINE ENGINEERING, LTD.
CONSULTING ENGINEERS
210 WEST CHESTNUT
CHATHAM, IL 62629
PROFESSIONAL DESIGN FIRM NO. 184-001181
PHONE: (217)-483-4168 FAX: (217)-483-4706

ILLINOIS DEPARTMENT OF TRANSPORTATION
PLAT OF HIGHWAYS
FAP ROUTE 998
SECTION N/A
ST. CLAIR COUNTY
JOB NO. R-98-026-08
STATION 60+04.42 TO STATION 60+83.48 (70E55N)

ILLINOIS DEPARTMENT OF TRANSPORTATION
DIVISION OF HIGHWAYS/REGION 5/DISTRICT 8
1102 EASTPORT PLAZA DRIVE
COLLINGSVILLE, ILLINOIS 62234-6198

F.A.P. RTE.	SECTION	COUNTY	TOTAL SHEETS	SHEET NO.
998	N/A	ST. CLAIR	89	66

CONTRACT NO. _____

PARCEL NO.	OWNER	TOTAL HOLDING ACRES	ACQUISITION BY DEDICATION		REMAINDER ACRES	EASEMENTS		PERMANENT TAX NUMBER	PROPERTY ACQUIRED BY
			GROSS ACRES	SO. FT.		PE = PERMANENT ACRES	TE = TEMPORARY SO. FT.		
8826234PE	CSX TRANSPORTATION, INC. BK X PG XXX TITLE REPORT NO. SC-6176.0	1	0.7255 (A)	31,603 (A)	0.7255 (A)	PE=1.8487	PE=80,529	02-07.0-500-004	
8826227DED	CSX TRANSPORTATION, INC. PG C PG49, BK 37 PG 603, BK L5 PG 319 TITLE REPORT NO. SC-5633.2	1.1548 (B)	1.1548 (B)	50,304 (B)	1.1548 (B)			02-07.0-503-001 02-07.0-503-002	

* SEE TOTAL HOLDING AREA SOURCE TABLE ON SHEET 2