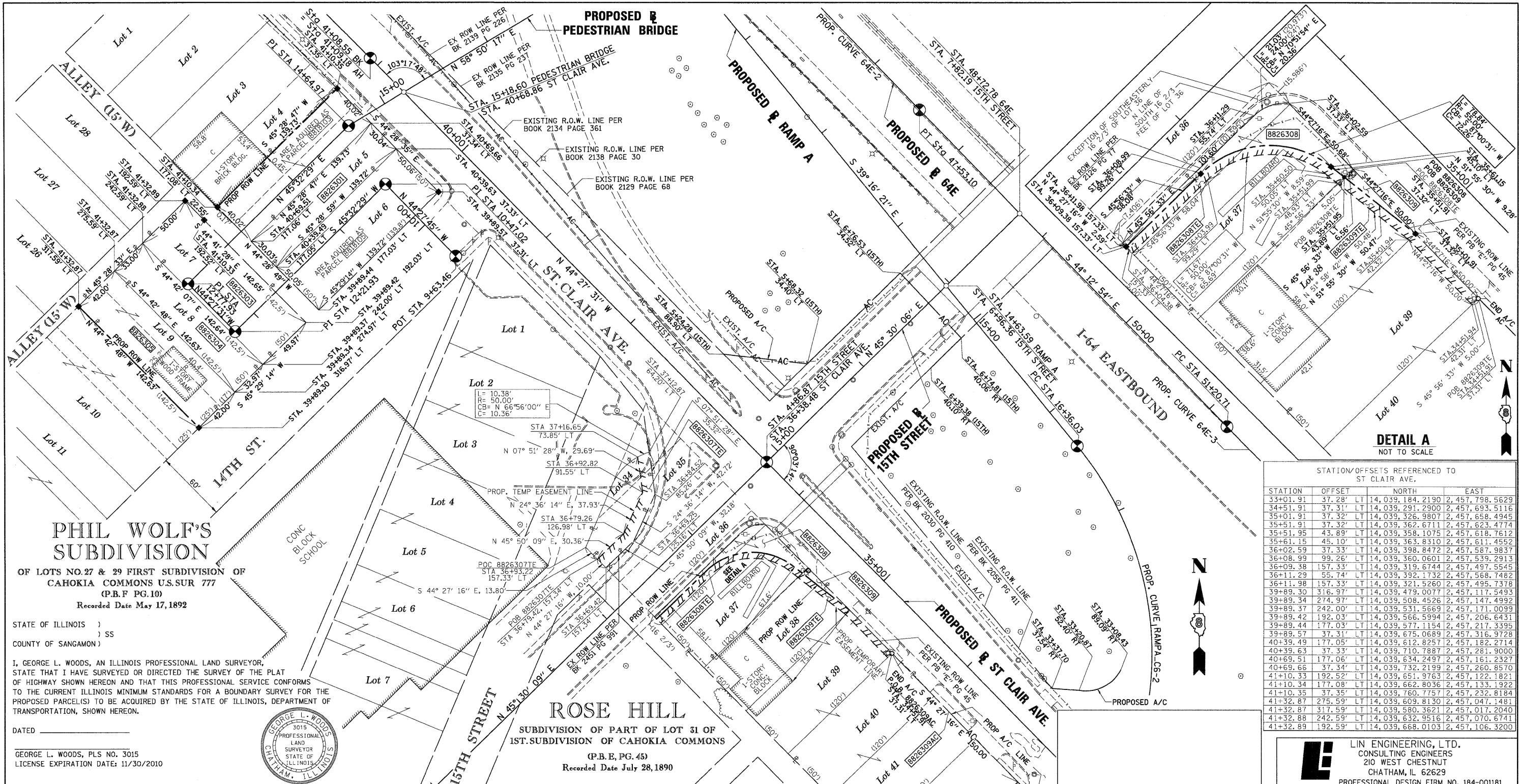


PART OF THE NW 1/4 OF SECTION 18, T2N, R9W OF THE 3RD PM, ST. CLAIR COUNTY, ILLINOIS



PHIL WOLF'S SUBDIVISION
 OF LOTS NO. 27 & 29 FIRST SUBDIVISION OF CAHOKIA COMMONS U.S.SUR 777 (P.B.F PG.10)
 Recorded Date May 17, 1892

STATE OF ILLINOIS)
 COUNTY OF SANGAMON) SS
 I, GEORGE L. WOODS, AN ILLINOIS PROFESSIONAL LAND SURVEYOR, STATE THAT I HAVE SURVEYED OR DIRECTED THE SURVEY OF THE PLAT OF HIGHWAY SHOWN HEREON AND THAT THIS PROFESSIONAL SERVICE CONFORMS TO THE CURRENT ILLINOIS MINIMUM STANDARDS FOR A BOUNDARY SURVEY FOR THE PROPOSED PARCEL(S) TO BE ACQUIRED BY THE STATE OF ILLINOIS, DEPARTMENT OF TRANSPORTATION, SHOWN HEREON.
 DATED _____
 GEORGE L. WOODS, PLS NO. 3015
 LICENSE EXPIRATION DATE: 11/30/2010



ROSE HILL
 SUBDIVISION OF PART OF LOT 31 OF 1ST. SUBDIVISION OF CAHOKIA COMMONS (P.B.E, PG. 45)
 Recorded Date July 28, 1890

STATION/OFFSETS REFERENCED TO ST. CLAIR AVE.

STATION	OFFSET	NORTH	EAST
33+01.91	37.28' LT	14, 039, 184.2190	2, 457, 693.5629
34+51.91	37.31' LT	14, 039, 291.2900	2, 457, 693.5116
35+01.91	37.32' LT	14, 039, 326.9807	2, 457, 658.4945
35+51.91	37.32' LT	14, 039, 362.6711	2, 457, 623.4774
35+51.95	43.89' LT	14, 039, 358.1075	2, 457, 618.7612
35+61.15	45.10' LT	14, 039, 363.8310	2, 457, 611.4552
36+02.59	37.33' LT	14, 039, 398.8472	2, 457, 587.9837
36+08.99	99.26' LT	14, 039, 360.0601	2, 457, 539.2913
36+09.38	157.33' LT	14, 039, 319.6744	2, 457, 497.5545
36+11.29	55.74' LT	14, 039, 392.1732	2, 457, 568.7482
36+11.98	157.33' LT	14, 039, 321.5260	2, 457, 495.7378
39+89.30	316.97' LT	14, 039, 479.0077	2, 457, 117.5493
39+89.34	274.97' LT	14, 039, 508.4526	2, 457, 147.4992
39+89.37	242.00' LT	14, 039, 531.5669	2, 457, 171.0099
39+89.42	192.03' LT	14, 039, 566.5994	2, 457, 206.6431
39+89.44	177.03' LT	14, 039, 577.1154	2, 457, 217.3395
39+89.57	37.31' LT	14, 039, 675.0689	2, 457, 316.9728
40+39.49	177.05' LT	14, 039, 612.8257	2, 457, 182.2714
40+39.63	37.33' LT	14, 039, 710.7887	2, 457, 281.9000
40+69.51	177.06' LT	14, 039, 634.2497	2, 457, 161.2327
40+69.66	37.34' LT	14, 039, 732.2199	2, 457, 260.8570
41+10.33	192.52' LT	14, 039, 651.9763	2, 457, 122.1821
41+10.34	177.08' LT	14, 039, 662.8036	2, 457, 133.1922
41+10.35	37.35' LT	14, 039, 760.7757	2, 457, 232.8184
41+32.87	275.59' LT	14, 039, 609.8130	2, 457, 047.1481
41+32.87	317.59' LT	14, 039, 580.3621	2, 457, 017.2040
41+32.88	242.59' LT	14, 039, 632.9516	2, 457, 070.6741
41+32.89	192.59' LT	14, 039, 668.0103	2, 457, 106.3200

PARCEL NO.	OWNER	TOTAL HOLDING ACRES	FEE SIMPLE ACQUISITION		REMAINDER ACRES	EASEMENTS		PERMANENT TAX NUMBER	PROPERTY ACQUIRED BY
			GROSS ACRES	SO. FT.		PE = PERMANENT ACRES	TE = TEMPORARY ACRES		
8818103**	AMANDA REYNOLDS TITLE REPORT NO. SC-3590.0	0.1284	0.1284	5,592	0.00			02-18-0-110-039	BK 4086 PC 1552-1554 A01968078
8818105**	VIOLA B. SPEARMAN-BIGGERS TITLE REPORT NO. SC-3736.0	0.1606	0.1606	6,994	0.00			02-18-110-008	BK 4214 PC 1312-1314 A01324432
8826301	ST. CLAIR COUNTY AS TRUSTEE TITLE REPORT NO. SC-5442.0 DOCUMENT NO. A02121469	0.0963	0.0963	4,196	0.00			02-18-0-110-007	
8826303	THE HOUSING AUTHORITY OF THE CITY OF EAST ST. LOUIS TITLE REPORT NO. SC-5624.0 BOOK 2293 PAGES 473-475	0.1637	0.1637	7,130	0.00			02-18-0-110-017	
8826304	DISCOUNT, INC. RETIREMENT PLAN TITLE REPORT NO. SC-5630.0, DOCUMENT NO. A02014623	0.1080	0.1080	4,705	0.00			02-18-0-110-018	
8826305	ST. CLAIR COUNTY AS TRUSTEE TITLE REPORT NO. SC-5631.0, DOCUMENT NO. A02121470	0.1375	0.1375	5,990	0.00			02-18-0-110-038	
8826307	THE COUNTY BOARD OF SCHOOL TRUSTEES OF ST. CLAIR COUNTY, FOR THE BENEFIT OF SCHOOL DISTRICT NO. 189 TITLE REPORT NO. SC-5437.0, BOOK 2451 PAGE 991	0.0654					TE 0.0239	TE 1,043	GRADING & SIDEWALK CONSTRUCTION
8826308	O.F.S., LTD. TITLE REPORT NO. SC-5632.0, BOOK 3030 PAGE 175	0.1621	0.0302	1,314	0.1319		TE 0.0163	TE 711	GRADING & SIDEWALK CONSTRUCTION
8826309	ADAM ABDELJABBAR, A MARRIED PERSON TITLE REPORT NO. SC-5434.0, DOCUMENT NO. A02073162	0.6887	0.0038	164	0.6849		TE 0.0115	TE 501	GRADING & SIDEWALK CONSTRUCTION

BASELINE COORDINATE TABLE ST. CLAIR AVE.

STATION	NORTH	EAST
PT 29+78.25	14, 038, 979.2504	2, 458, 051.8054
PI 36+38.49 (ST CLAIR AVENUE) =	14, 039, 450.6200	2, 457, 589.5000
PI 4+86.87 (15TH STREET) =		
PI 40+68.86 (ST CLAIR AVENUE) =	14, 039, 450.6164	2, 457, 589.5036
PI 15+18.60 (PEDESTRIAN BRIDGE) =		
PI 41+08.55 (BK) =	14, 039, 786.1280	2, 457, 260.2720
PI 41+09.18 (AH) =		
POT 52+37.78	14, 040, 590.9000	2, 456, 469.0200

BASELINE COORDINATE TABLE PEDESTRIAN BRIDGE

STATION	NORTH	EAST
PI 9+63.46	14, 039, 621.9347	2, 457, 331.2636
PI 10+47.02	14, 039, 681.5739	2, 457, 272.7327
PI 12+21.93	14, 039, 559.0738	2, 457, 147.8959
PI 12+77.93	14, 039, 599.0441	2, 457, 108.6738
PI 14+64.97	14, 039, 730.0493	2, 457, 242.1779

LIN ENGINEERING, LTD.
 CONSULTING ENGINEERS
 210 WEST CHESTNUT
 CHATHAM, IL 62629
 PROFESSIONAL DESIGN FIRM NO. 184-00181
 PHONE: (217)-483-4168 FAX: (217)-483-4706

ILLINOIS DEPARTMENT OF TRANSPORTATION
PLAT OF HIGHWAYS
 FAP ROUTE 998
 SECTION 82-1-HBR & 82-1-2HB
 ST. CLAIR COUNTY
 JOB NO. R-98-026-08

STATION 33+01.91 TO STATION 41+32.89 (ST. CLAIR AVE.)

SCALE: 1" = 40'

ILLINOIS DEPARTMENT OF TRANSPORTATION
 DIVISION OF HIGHWAYS/REGION 5/DISTRICT 8
 1102 EASTPORT PLAZA DRIVE
 COLLINSVILLE, ILLINOIS 62234-6198

F.A.P. RTE.	SECTION	COUNTY	TOTAL SHEETS	SHEET NO.
998	82-1-HBR & 82-1-2HB	ST. CLAIR	89	86

CONTRACT NO. _____

ILLINOIS DEPARTMENT OF TRANSPORTATION
 STATIONING REFERENCED TO PROPOSED ST. CLAIR AVE.

COMPLETION DATE OF FIELD WORK PERFORMED	LAND SURVEY:	ROW STAKING:
	OCT./2009	OCT./2009

FED. ROAD DIST. NO. [ILLINOIS] FED. AID PROJECT