

F.A.P. RTE.	SECTION	COUNTY	TOTAL SHEETS	SHEET NO.
132	103B-1	POPE	52	1
D-99-041-09		ILLINOIS	CONTRACT NO. 78134	

**STATE OF ILLINOIS  
DEPARTMENT OF TRANSPORTATION  
DIVISION OF HIGHWAYS**

**PROPOSED  
HIGHWAY PLANS**

**FAP ROUTE 132 (IL-145)  
CROSSING FAP ROUTE 885 (IL-146)  
SECTION 103B-1  
PROJECT F-0132(133)  
POPE COUNTY  
C-99-060-09  
STRUCTURE REPLACEMENT  
OVER IL-146**

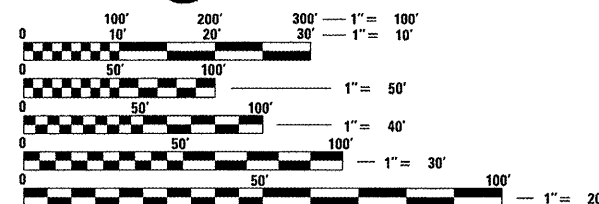
**INDEX OF SHEETS**

SHEET NO.	DESCRIPTION
1	COVER SHEET
2	GENERAL NOTES & STANDARDS
3 - 6	SUMMARY OF QUANTITIES
7	TYPICAL SECTIONS
8 - 9	SCHEDULES OF QUANTITIES
10	ALIGNMENT, TIES, & BENCHMARKS
11	REMOVAL PLAN
12	PLAN AND PROFILE SHEET
13	TRAFFIC CONTROL AND STAGING
14	WIDE LOAD DETOUR SIGNING
15	TEMPORARY EROSION CONTROL PLAN
16	DRAINAGE DETAILS & SCHEDULES
17	DISTRICT 9 STANDARDS
18 - 24	CROSS SECTIONS
25 - 52	BRIDGE PLANS

**FOR LIST OF HIGHWAY STANDARDS, SEE SHEET NO. 2**

**UTILITY NOTE**

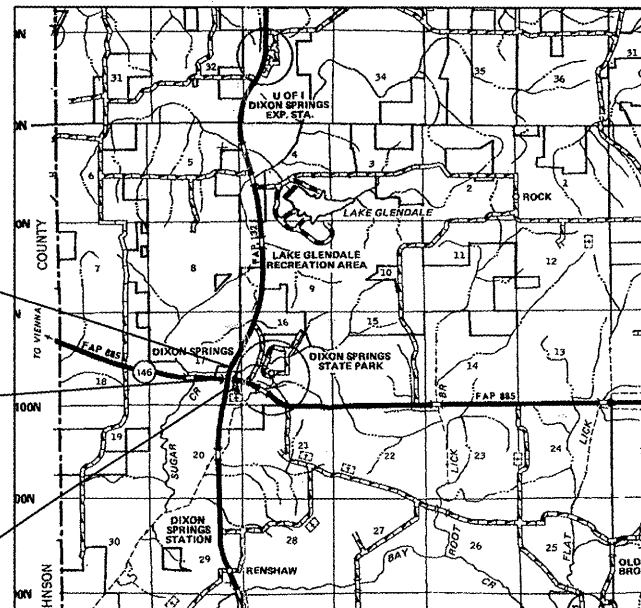
THE LOCATIONS OF THOSE BURIED AND ABOVEGROUND UTILITIES SHOWN ARE APPROXIMATE, ARE SHOWN FOR CONTRACTOR INFORMATIONAL USE ONLY, AND ARE NOT TO BE REFERENCED FOR CONSTRUCTION PURPOSES. THE IMPLIED PRESENCE OR ABSENCE OF UTILITIES IS NOT TO BE CONSTRUED BY THE OWNER, ENGINEER, CONTRACTOR, OR SUBCONTRACTORS TO BE AN ACCURATE AND COMPLETE REPRESENTATION OF UTILITIES THAT MAY OR MAY NOT EXIST ON THE CONSTRUCTION SITE. BURIED AND ABOVEGROUND UTILITY LOCATION, IDENTIFICATION, AND MARKING ARE THE SOLE RESPONSIBILITY OF THE CONTRACTOR, REROUTING, DISCONNECTION, PROTECTION, ETC. OF AN UTILITIES MUST BE COORDINATED BETWEEN THE CONTRACTOR, UTILITY COMPANY, AND OWNER. SITE SAFETY, INCLUDING THE AVOIDANCE OF HAZARDS ASSOCIATED WITH BURIED AND ABOVEGROUND UTILITIES, REMAIN THE SOLE RESPONSIBILITY OF THE CONTRACTOR



FULL SIZE PLANS HAVE BEEN PREPARED USING STANDARD ENGINEERING SCALES. REDUCED SIZED PLANS WILL NOT CONFORM TO STANDARD SCALES. IN MAKING MEASUREMENTS ON REDUCED PLANS, THE ABOVE SCALES MAY BE USED.

J.U.L.I.E.  
JOINT UTILITY LOCATION INFORMATION FOR EXCAVATION  
1-800-892-0123  
OR 811

**PROJECT MANAGER - DAVID PICHE (618) 549-2171  
CONTRACT NO. 78134**



BEGIN IMPROVEMENTS IL-145  
STA 288+50.00

STRUCTURE \*076-0016 (EXISTING)  
STRUCTURE \*076-0028 (PROPOSED)  
STA. 293+11.40 TO STA. 295+17.91

STATION EQUATION  
STA. 295+20.40 =  
STA. 1020+82.50

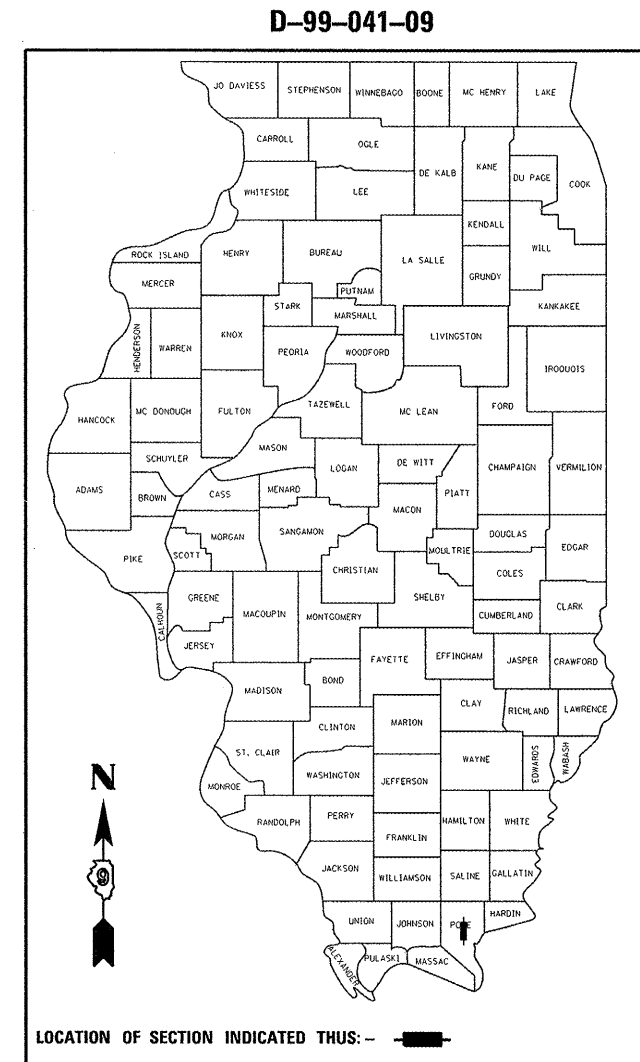
END IMPROVEMENTS IL-145  
STA 1018+40.00

**AREA LOCATION PLAN**



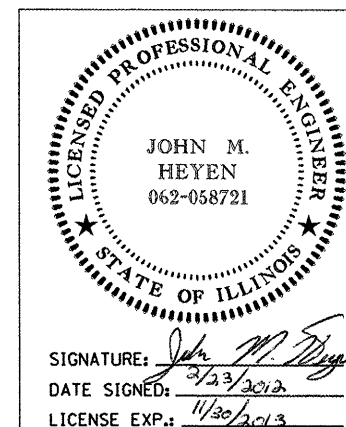
GROSS LENGTH = 1,155.4 FT. = 0.22 MILES  
NET LENGTH = 1,155.4 FT. = 0.22 MILES

TOWNSHIP: ROAD DISTRICT #1



LOCATION OF SECTION INDICATED THIS: - [rectangle] -

**FUNCTIONAL CLASSIFICATION  
MINOR ARTERIAL (NON-URBAN)  
2007 ADT = 1450 (IL-145)  
P.V. = 88.9% S.U. = 4.1% M.U. = 7.0%  
ROAD DISTRICT #1**



SIGNATURE: *John M. Heyen*  
DATE SIGNED: 3/23/2012  
LICENSE EXP.: 11/30/2013

© Copyright Hanson Professional Services Inc. 2012



STATE OF ILLINOIS  
DEPARTMENT OF TRANSPORTATION  
DIVISION OF HIGHWAYS

SUBMITTED: *March 12 2012*  
*Omer Asman*  
DEPUTY DIRECTOR OF HIGHWAYS, REGION ENGINEER

*May 11 2012*  
*John D. Baranzelli, P.E.*  
ENGINEER OF DESIGN AND ENVIRONMENT

*May 11 2012*  
*William R. Frey, Jr.*  
DIRECTOR OF HIGHWAYS, CHIEF ENGINEER

**PRINTED BY THE AUTHORITY  
OF THE STATE OF ILLINOIS**