

NOTE:
SEE DRAINAGE DETAILS & SCHEDULES SHEET
FOR DRAINAGE ELEVATION/LOCATION

LOW CLEARANCE SIGN (W12-2)
AND POST TO BE REMOVED

APPROACH SLAB REMOVAL (IL 145)
STA. 293+60.81 TO
STA. 293+90.60
AREA = 102 SQ. YD.

APPROACH SLAB REMOVAL (IL 145)
STA. 294+41.74 TO
STA. 294+71.53
AREA = 102 SQ. YD.

PROPOSED BUTT JOINT @ 240:1
STA. 287+75.00 TO
STA. 288+50.00
AREA = 199 SQ. YD.
SEE DISTRICT STANDARD 9-86

EXISTING GUARDRAIL
TO BE REMOVED (IL 145)
STA. 289+11.30 TO
STA. 293+90.66
LENGTH = 476'

TREE REMOVAL, ACRE
STA. 290+63.59 LT TO
STA. 293+49.85 LT
0.27 ACRES

EXISTING GUTTER
TO BE REMOVED
STA. 292+65.15 TO
STA. 293+54.54
LENGTH = 89'

USGS 10 FWK TO BE RESET ON PROP.
STRUCT. LOCATION TO BE DETERMINED
IN THE FIELD BY THE ENGINEER.

EXISTING GUARDRAIL
TO BE REMOVED (IL 145)
STA. 294+41.73 TO
STA. 295+17.91
LENGTH = 76'

PROPOSED BUTT JOINT @ 240:1
STA. 1018+40.00 TO
STA. 1017+95.00
AREA = 167 SQ. YD.
SEE DISTRICT STANDARD 9-86

EXISTING GUTTER
TO BE REMOVED
STA. 287+75.00 TO
STA. 292+58.07
LENGTH = 507'

EXISTING SHOULDER REMOVAL
STA. 294+77.36 TO
STA. 295+32.64
AREA = 23 SQ. YD.

EXISTING GUTTER
TO BE REMOVED
STA. 1018+40.00 TO
STA. 1019+00.00
LENGTH = 60'

EXISTING GUTTER
TO BE REMOVED
STA. 287+75.00 TO
STA. 288+93.58
LENGTH = 125'

EXISTING GUARDRAIL
TO BE REMOVED (IL 145)
STA. 289+17.90 TO
STA. 293+90.64
LENGTH = 477'

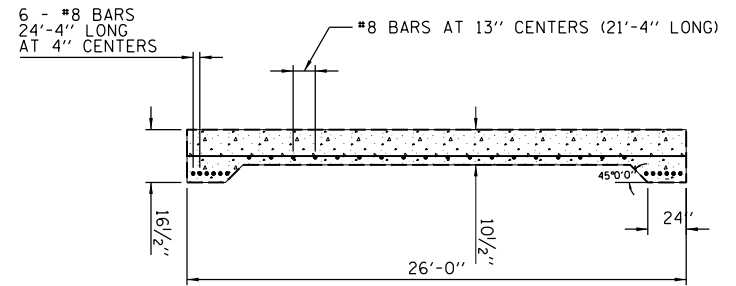
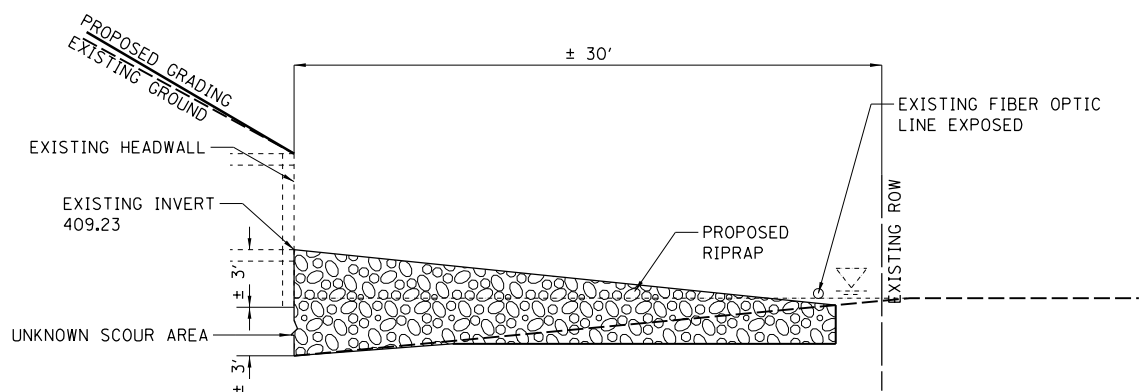
JCT IL-146 SIGN TO BE RELOCATED
TO STA. 292+60.38 21.19' RT

PAVEMENT REMOVAL (IL 145)
STA. 294+71.53 TO
STA. 1020+81.99
AREA = 158 SQ. YD.

PAVEMENT REMOVAL (IL 145)
STA. 293+08.40 TO
STA. 293+60.81
AREA = 145 SQ. YD.

EXISTING GUARDRAIL
TO BE REMOVED (IL 145)
STA. 294+71.73 TO
STA. 295+16.85
LENGTH = 77'

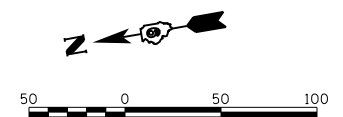
TREE REMOVAL, ACRE
STA. 289+11.95 RT TO
STA. 293+87.00, RT
0.65 ACRES



SECTIONAL VIEW OF EXISTING APPROACH SLAB IL-145

LOW CLEARANCE SIGN (W12-2)
AND POST TO BE REMOVED

SECTION A-A SCOUR HOLE FILL DETAIL



© Copyright Hanson Professional Services Inc., 2012

FILE NAME =	USER NAME = brenn00248	DESIGNED - BKC	REVISED -
ct:\working\dms23830\0978134-sht-rem.dgn		DRAWN - BKC	REVISED -
MODEL = 50 scale		CHECKED - MH	REVISED -
		DATE - 02/23/12	REVISED -

**STATE OF ILLINOIS
DEPARTMENT OF TRANSPORTATION**

IL ROUTE 145 REMOVAL SHEET

SCALE: SHEET NO. OF SHEETS STA. TO STA.

F.A.P. RTE.	SECTION	COUNTY	TOTAL SHEETS	SHEET NO.
132	103B-1	POPE	52	11
CONTRACT NO. 78134				
FED. ROAD DIST. NO. ILLINOIS FED. AID PROJECT				