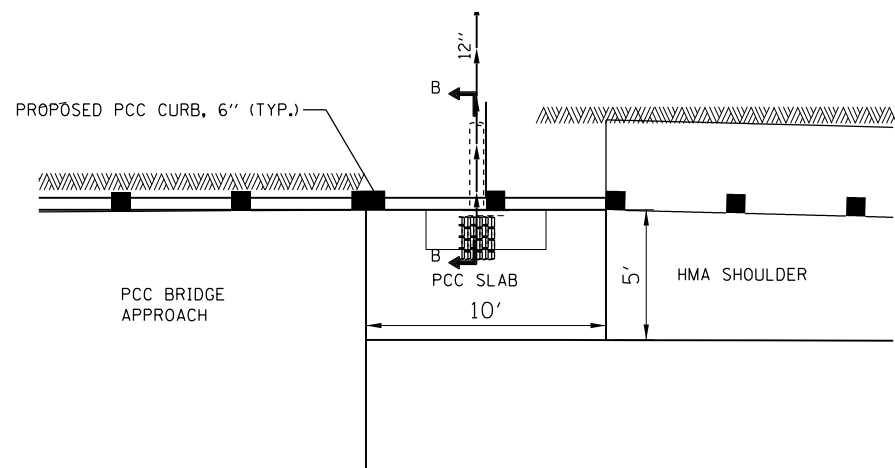


SECTION B-B

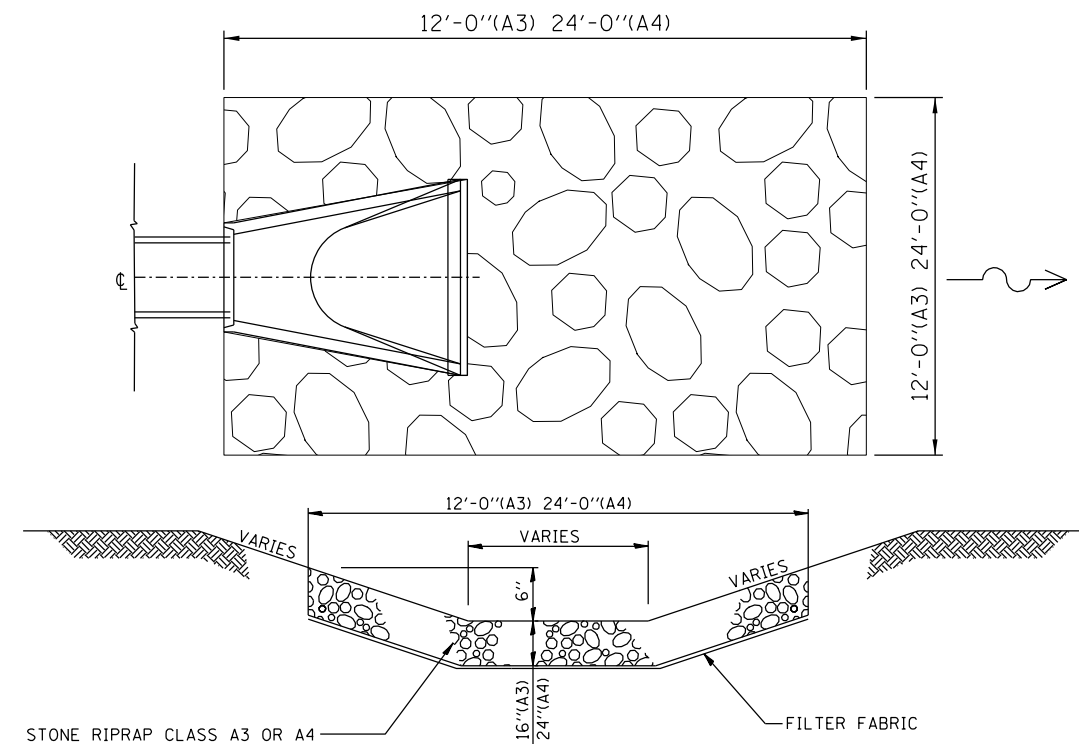


INLET BOX AND PIPE DRAIN DETAIL

PIPE SCHEDULE								
LOCATION						PIPE DRAIN 12" (FOOT)	PIPE DRAIN REMOVAL (SPECIAL) SEE NOTE 1 (FOOT)	TRENCH BACKFILL (CU YD)
PIPE NUMBER	FROM STRUCTURE S-NUMBER	TO STRUCTURE INV ELEV	TO STRUCTURE S-NUMBER	TO STRUCTURE INV ELEV	PIPE SLOPE %			
P101	S101	-	S102	-	-	28		
P102	S106	-	S107	-	-	59 *		
P103	S108	-	S109	-	-	86 *		
P104	S110	-	S111	-	-	10 *		
P10	S10	456.01	S11	431.37	32.4%	76		0.4
P11	S12	455.46	S13	436.79	28.3%	66		0.4
P12	S14	455.29	S15	435.92	31.2%	62		0.4
TOTAL						204	183	1.2

NOTE 1
 PIPE DRAIN REMOVAL INCLUDES REMOVAL OF EXISTING END SECTIONS AND CONCRETE THRUST BLOCKS

* CAP EXISTING PIPE WITH CLASS SI CONCRETE. INCLUDED IN THE COST FOR PIPE DRAIN REMOVAL.



STONE RIP RAP DETAIL

IL RTE 145
 STA. 288+15.00, LT
 STA. 288+25.00, RT
 STA. 292+28.16, RT
 STA. 293+06.34, LT
 STA. 1020+80.00 RT & LT

DRAINAGE STRUCTURE SCHEDULE													
LOCATION						TYPE B INLET BOX, STANDARD 609006 (SPECIAL) (EACH)	CONCRETE THRUST BLOCKS (EACH)	END SECTIONS 12" (EACH)	STONE RIP RAP CLASS A3 (SQ YD)	STONE RIP RAP CLASS A4 (TON)	FILTER FABRIC (SQ YD)	REMOVING INLETS (EACH)	SEE NOTE 1
STR	STATION	OFFSET	SIDE	RIM ELEV	INVERT ELEV								
-	288+15.00	27.08'	LT	-	-				16				
-	288+25.00	40.11'	RT	-	-				16				
S101	288+96.79	16.90'	RT	-	-						1		
S102	288+95.92	44.71'	RT	-	-							1	
S105	292+28.16	99.99'	RT	-	-				128	64			
S106	292+61.05	15.49'	LT	-	-						1		
S107	292+61.68	84.90'	LT	-	-							1	
S108	292+70.03	16.33'	RT	-	-							1	
S109	292+68.76	107.47'	RT	-	-								1
S110	1019+10.41	27.57'	LT/LN	-	-								1
S111	1019+18.32	91.22'	LT/LN	-	-								
S10	293+06.34	14.20'	LT	458.01	456.01	1							
S11	293+06.34	76.00'	LT	-	431.37			1	16		16		
S16	293+06.34	69.00'	LT	-	-		1						
S15	294+88.00	70.00'	RT	-	435.92			1	16		16		
S17	294+95.00	58.00'	RT	-	-		1						
S12	1020+80.00	14.20'	RT/LN	457.46	455.46	1							
S13	1020+80.00	64.00'	RT/LN	-	436.79			1	16		16		
S14	1020+80.00	19.45'	LT/LN	457.29	455.29	1							
S18	1020+80.00	66.00'	RT/LN	-	-		1						
TOTAL						3	3	3	80	128	112	4	1

FILE NAME =	USER NAME = brenn00248	DESIGNED - BKC	REVISED -
ct:\working\dms23830\0978134-sht-details.dgn		DRAWN - BKC	REVISED -
MODEL = DRAINAGE DETAILS	PLOT SCALE = 40.0000' / in.	CHECKED - MH	REVISED -
	PLOT DATE = 02/22/2012	DATE - 02/23/12	REVISED -

**STATE OF ILLINOIS
 DEPARTMENT OF TRANSPORTATION**

IL-145 (OVER IL-146) DRAINAGE DETAILS & SCHEDULES

SCALE: SHEET NO. OF SHEETS STA. TO STA.

F.A.P. RTE.	SECTION	COUNTY	TOTAL SHEETS	SHEET NO.
132	103B-1	POPE	52	16
CONTRACT NO. 78134				
FED. ROAD DIST. NO. ILLINOIS FED. AID PROJECT				