

GENERAL NOTES

Fasteners shall be AASHTO M164 Type I, mechanically galvanized bolts.
Bolts 7/8 in. φ, holes 15/16 in. φ, unless otherwise noted.

Calculated weight of Structural Steel = M270, Gr. 50 = 108320 lbs.
M270, Gr. 36 = 8430 lbs.

No field welding is permitted except as specified in the contract documents.

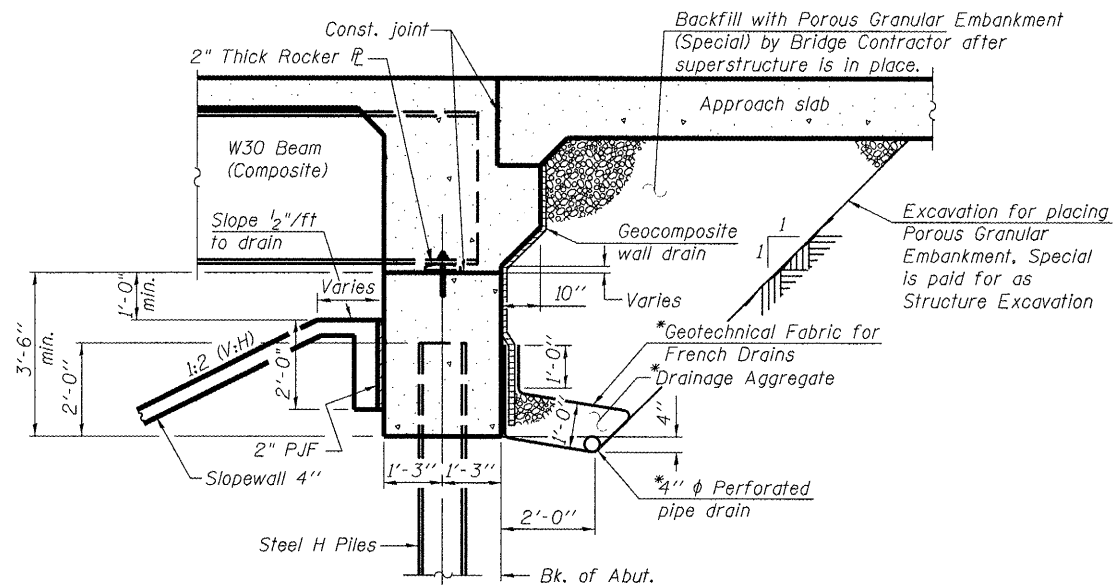
Reinforcement bars designated (E) shall be epoxy coated.

Bearing seat surfaces shall be constructed or adjusted to the designated elevations within a tolerance of 1/8 inch (0.01 ft.). Adjustment shall be made either by grinding the surface or by shimming the bearings.

The Inorganic Zinc Rich Primer / Acrylic / Acrylic Paint System shall be used for shop and field painting of new structural steel except where otherwise noted. The color of the final finish coat for all interior steel surfaces shall be gray, Munsell No. 5B 7/1. The color of the final finish coat for the exterior and bottom flange of the fascia beams shall be Blue, Munsell No. 10B 3/6.

The embankment configuration shown shall be the minimum that must be placed and compacted prior to construction of the abutments.

Slipforming of parapets is not allowed.



SECTION THRU INTEGRAL ABUTMENT

(Horiz. dim. @ Rt. L's)

*Included in the cost of Pipe Underdrains for Structures.

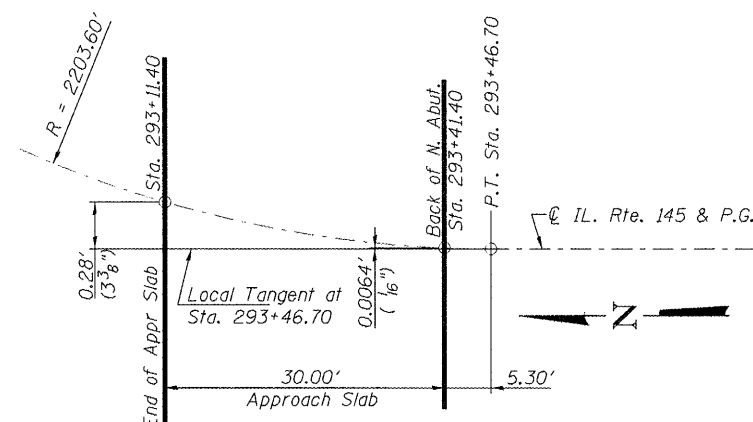
Note:
All drainage system components shall extend to 2'-0" from the end of each wingwall except an outlet pipe shall extend until intersecting with the side slope. The pipes shall drain into concrete headwalls. (See Article 601.05 of the Standard Specifications and Highway Standard 601101)

TOTAL BILL OF MATERIAL

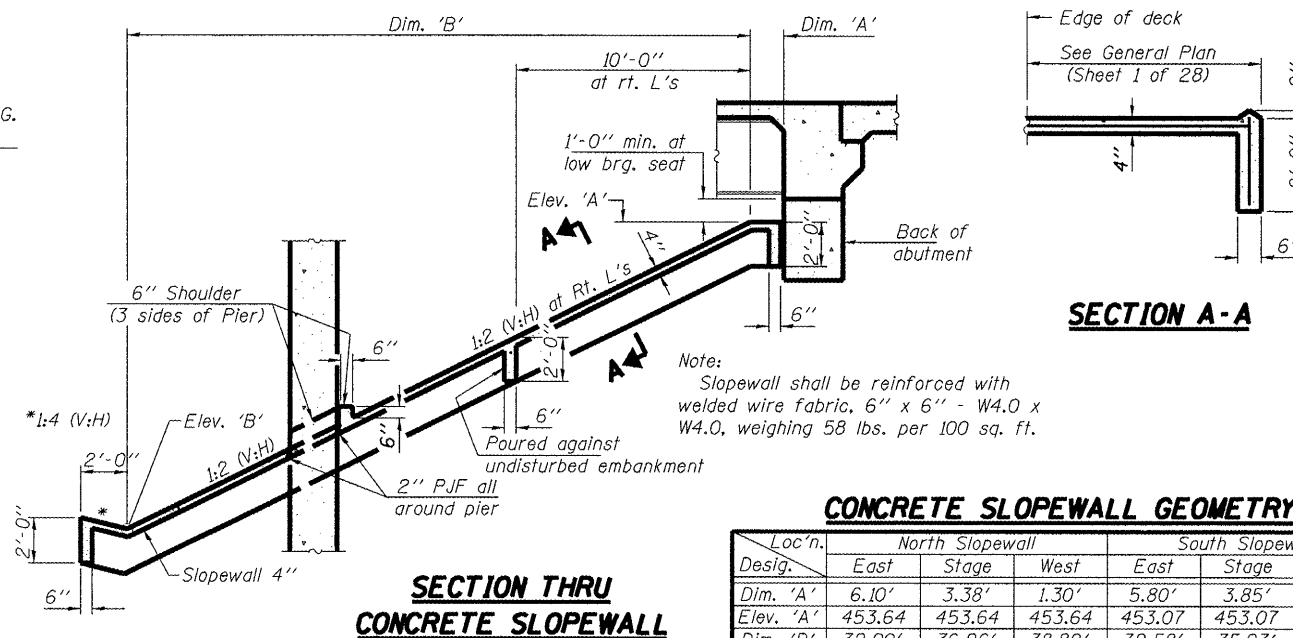
ITEM	UNIT	SUPER	SUB	TOTAL
Porous Granular Embankment, Special	Cu. Yd.	-	102	102
Removal of Existing Structures	Each	-	-	1
Protective Shield	Sq. Yd.	167	-	167
Structure Excavation	Cu. Yd.	-	224	224
Floor Drains	Each	2	-	2
Concrete Structures	Cu. Yd.	-	166.5	166.5
Concrete Superstructure	Cu. Yd.	321.5	-	321.5
Bridge Deck Grooving	Sq. Yd.	785	-	785
Concrete Encasement	Cu. Yd.	-	4.8	4.8
Protective Coat	Sq. Yd.	1004	-	1004
Furnishing and Erecting Structural Steel	L. Sum	1	-	1
Stud Shear Connectors	Each	4515	-	4515
Reinforcement Bars	Pound	-	17970	17970
Reinforcement Bars, Epoxy Coated	Pound	79810	22950	102760
Bar Splicers	Each	672	232	904
Slope Wall 4 Inch	Sq. Yd.	-	458	458
Furnishing Steel Piles HP12x63	Foot	-	414	414
Driving Piles	Foot	-	414	414
Test Pile Steel HP12x63	Each	-	2	2
Name Plates	Each	1	-	1
Drilled Shaft in Soil	Cu. Yd.	-	24	24
Drilled Shaft in Rock	Cu. Yd.	-	16	16
Anchor Bolts, 1"	Each	28	-	28
Anchor Bolts, 1/4"	Each	28	-	28
Geocomposite Wall Drain	Sq. Yd.	-	64	64
Pipe Underdrains for Structures 4"	Foot	-	143	143
Mechanical Splicers	Each	-	96	96
Drainage Scuppers, DS-11	Each	3	-	3
Temporary Soil Retention System	Sq. Ft.	-	1271	1271

INDEX OF SHEETS

- 1 General Plan
- 2 General Data
- 3 Substructure Layout and Temporary Soil Retention System Details
- 4 Stage Construction Details
- 5 Temporary Concrete Barrier for Stage Construction
- 6-8 Top of Slab Elevations - Bridge Deck
- 9-10 Top of Slab Elevations - Approach Slabs
- 11-13 Superstructure Details
- 14-15 Integral Abutment Diaphragm Details
- 16-17 Bridge Approach Slab Details
- 18 Drainage Scupper Details
- 19-20 Structural Steel Details
- 21 Bearing Details
- 22 North Abutment
- 23 South Abutment
- 24 Pier 1
- 25 Pier 2
- 26 HP Pile Details
- 27 Bar Splicer Assembly and Mechanical Splicer Details
- 28 Boring Logs



SCHEMATIC OFFSET SKETCH



SECTION THRU CONCRETE SLOPEWALL

CONCRETE SLOPEWALL GEOMETRY

Loc'n. Desig.	North Slopewall			South Slopewall		
	East	Stage	West	East	Stage	West
Dim. 'A'	6.10'	3.38'	1.30'	5.80'	3.85'	2.10'
Elev. 'A'	453.64	453.64	453.64	453.07	453.07	453.07
Dim. 'B'	32.90'	36.26'	38.82'	32.58'	35.93'	38.86'
Elev. 'B'	437.19	435.51	434.23	436.78	435.10	433.64

STATION 294+14.65
BUILT 20__ BY
STATE OF ILLINOIS
F.A.P. RT. 132 SEC. 103B-1
LOADING HL93
STRUCTURE NO. 076-0028

NAME PLATE

See Std. 515001

HANSON
 PROFESSIONAL DESIGN FIRM LICENSE #184-001084
 © Copyright Hanson Professional Services Inc. 2012

FILE NAME = 0760028-78134.dgn	USER NAME = huffm0028	DESIGNED - BDC	REVISIONS -	STATE OF ILLINOIS DEPARTMENT OF TRANSPORTATION	GENERAL DATA STRUCTURE NO. 076-0028	F.A.P. RTE. 132	SECTION 103B-1	COUNTY Pope	TOTAL SHEETS 52	SHEET NO. 26
PLOT SCALE =	DRAWN - DAB and Rod	CHECKED - MNM	REVISIONS -			CONTRACT NO. 78134				
PLOT DATE = 0A2A2012	CHECKED - TEH	DRAWN - DAB and Rod	REVISIONS -			ILLINOIS FED. AID PROJECT				
						SHEET NO. 2 OF 28 SHEETS				