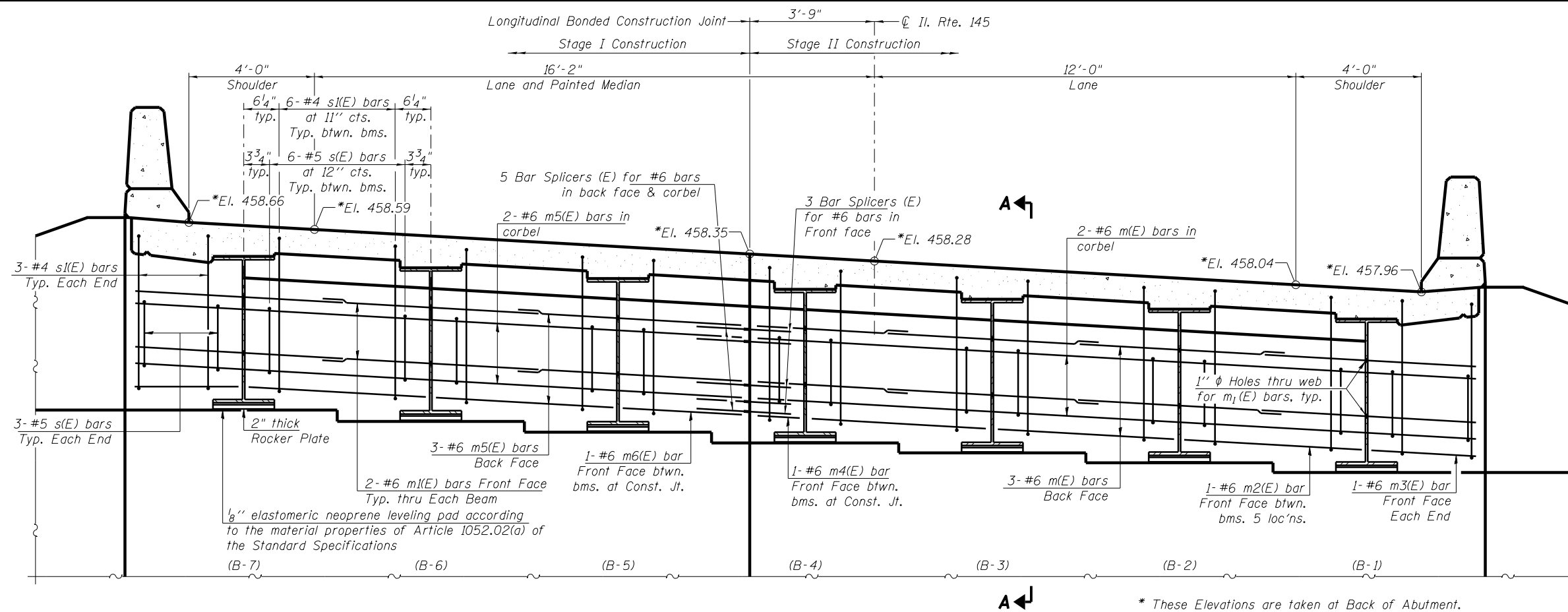




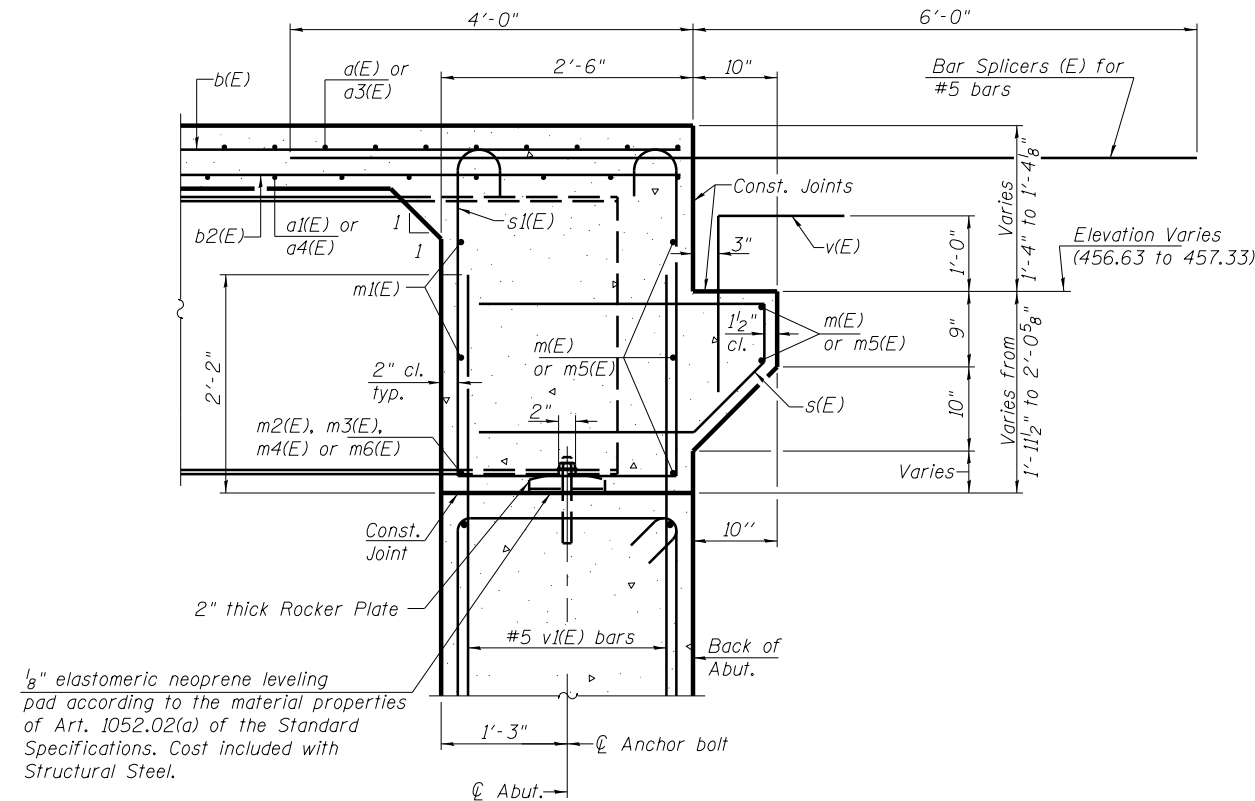
PROFESSIONAL DESIGN FIRM LICENSE #184-001084
© Copyright Hanson Professional Services, Inc. 2012



DIAPHRAGM ELEVATION AT NORTH ABUTMENT

Looking North

* These Elevations are taken at Back of Abutment.



SECTION A-A

Notes:
Reinforcement bars in diaphragm are billed with superstructure on sheet 12 of 28.
Concrete in diaphragm is included with Concrete Superstructure on sheet 12 of 28.
For details of bars s(E) & sl(E) see sheet 12 of 28.
The s(E) and sl(E) bars shall be placed parallel to the beams. Spacing for these bars shall be at right angles to the beams.

MIN. BAR LAP

#6 bar = 3'-4"

FILE NAME = 0760028-78134.dgn	USER NAME = huffm00028	DESIGNED - DAB	REVISD -	STATE OF ILLINOIS DEPARTMENT OF TRANSPORTATION	INTEGRAL ABUTMENT DIAPHRAGM DETAILS - NORTH ABUTMENT STRUCTURE NO. 076-0028	F.A.P. RTE. 132	SECTION 103B-1	COUNTY Pope	TOTAL SHEETS 52	SHEET NO. 38	
PLOT SCALE =	DRAWN - DAB and Rod	REVISD -	CONTRACT NO. 78134								
PLOT DATE = 02/22/2012	CHECKED - TEH	REVISD -	SHEET NO. 14 OF 28 SHEETS								
ILLINOIS FED. AID PROJECT											