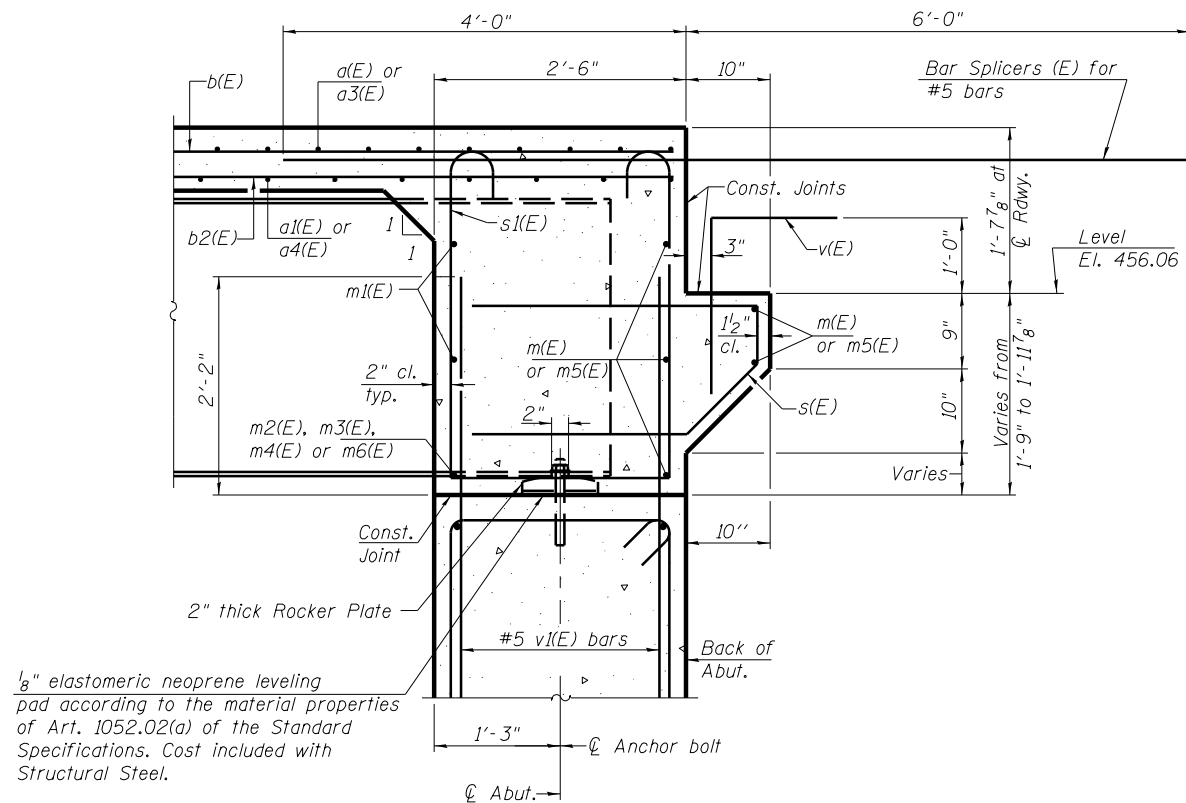


**DIAPHRAGM ELEVATION AT SOUTH ABUTMENT**

Looking South

\* These Elevations are taken at Back of Abutment.



**SECTION A-A**

Notes:  
 Reinforcement bars in diaphragm are billed with superstructure on sheet 12 of 28.  
 Concrete in diaphragm is included with Concrete Superstructure on sheet 12 of 28.  
 For details of bars s(E) & s1(E) see sheet 12 of 28.  
 The s(E) and s1(E) bars shall be placed parallel to the beams. Spacing for these bars shall be at right angles to the beams.  
 Provide Shim Plate between Bearing and Bearing Pad at Beam #4. See Sheet 21 of 28.

**MIN. BAR LAP**

#6 bar = 3'-4"

FILE NAME = 0760028-78134.dgn	USER NAME = hufm00028	DESIGNED - DAB	REVISIONS -	<b>STATE OF ILLINOIS DEPARTMENT OF TRANSPORTATION</b>	<b>INTEGRAL ABUTMENT DIAPHRAGM DETAILS - SOUTH ABUTMENT STRUCTURE NO. 076-0028</b>	F.A.P. RTE. 132	SECTION 103B-1	COUNTY Pope	TOTAL SHEETS 52	SHEET NO. 39
PLOT SCALE =	DRAWN - DAB and Rod	REVISIONS -	<b>CONTRACT NO. 78134</b>							
PLOT DATE = 02/22/2012	CHECKED - TEH	REVISIONS -	SHEET NO. 15 OF 28 SHEETS							
						ILLINOIS FED. AID PROJECT				