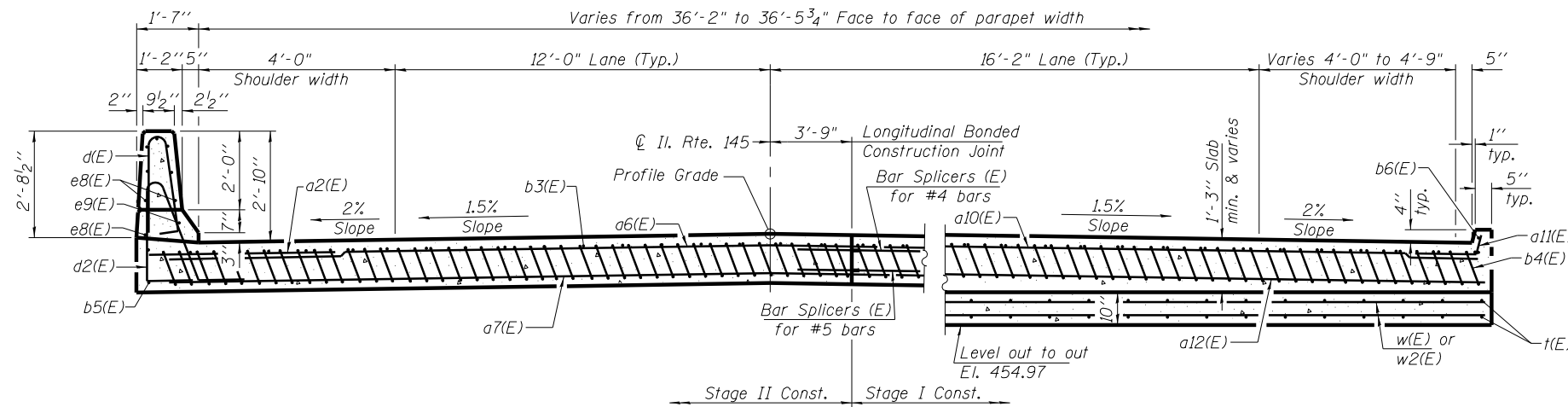


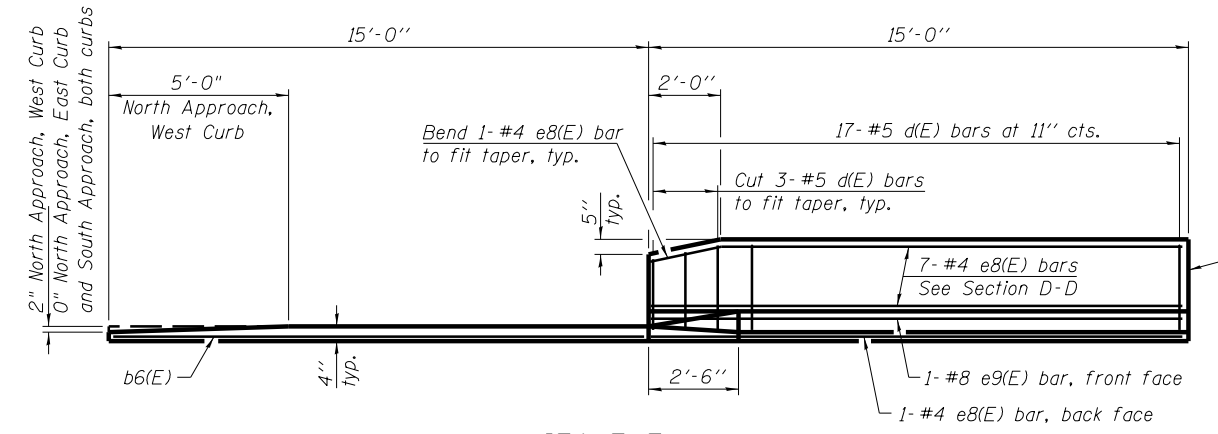
SECTION D-D (NORTH APPROACH)
(See Plan for dimensions not shown)

* Tilt #9 b4(E) bars as required to maintain clearance.
 *** Cost included with Concrete Superstructure.

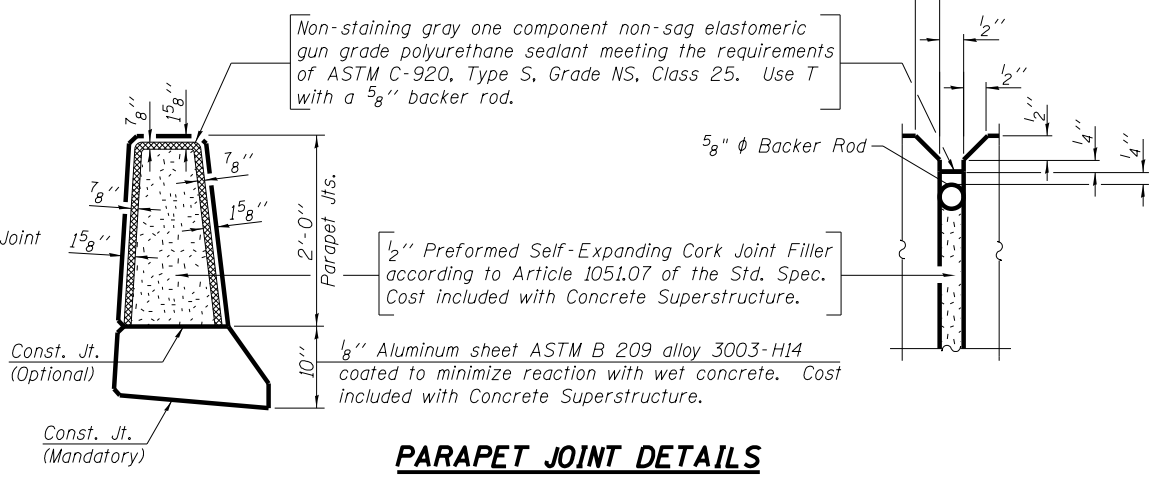


SECTION D-D (SOUTH APPROACH)
(See Plan for dimensions not shown)

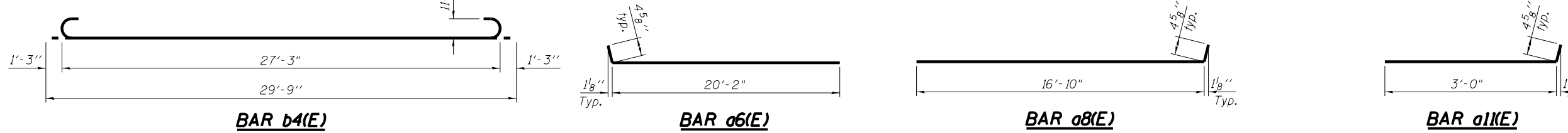
*** Cost included with Concrete Superstructure.



VIEW E-E

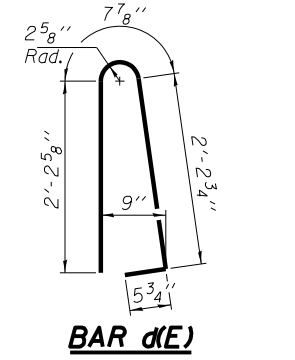


PARAPET JOINT DETAILS

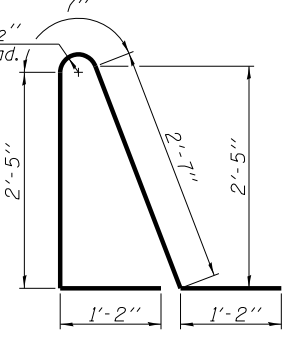


MINIMUM BAR LAP

#4 bar = 2'-7"
 #5 bar = 3'-3"

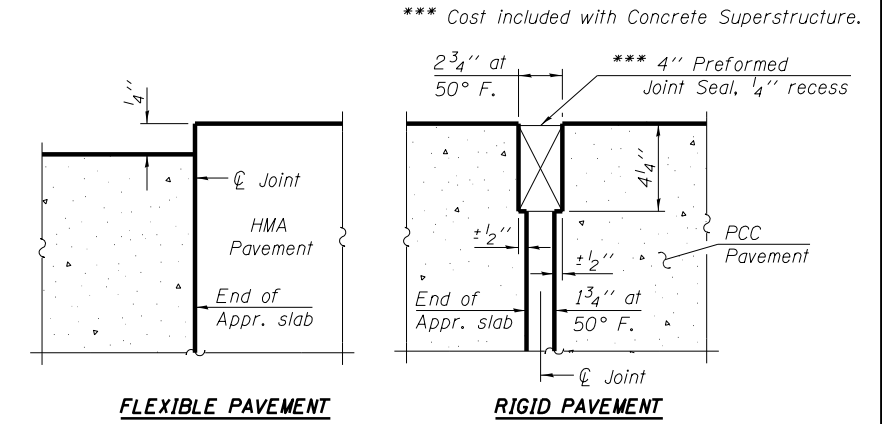


BAR d(E)



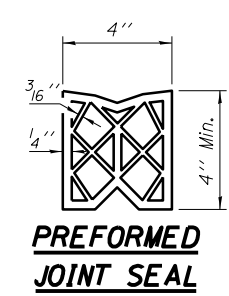
BAR d2(E)

Notes:
 Approach slab and parapet concrete shall be paid for as Concrete Superstructure.
 Approach footing concrete shall be paid for as Concrete Structures.
 Reinforcement shall be paid for as Reinforcement Bars, Epoxy Coated.
 For v(E) bar details, see sheet 12 of 28.
 The approach footing maximum applied service bearing pressure (Qmax) = 2.0 ksf.
 For bar splicer details, see sheet 27 of 28.
 Cost of excavation for approach footing included with Concrete Structures.
 For Porous Granular Embankment (Special) and drainage treatment details, see sheet 2 of 28.
 For additional parapet details, see sheet 12 of 28.



FLEXIBLE PAVEMENT

RIGID PAVEMENT



PREFORMED JOINT SEAL

DETAIL A

TWO APPROACHES BILL OF MATERIAL

Bar	No.	Size	Length	Shape
a2(E)	48	#6	6'-6"	—
a6(E)	50	#4	20'-7"	—
a7(E)	92	#5	20'-4"	—
a8(E)	25	#4	17'-3"	—
a9(E)	46	#5	17'-0"	—
a10(E)	25	#4	17'-0"	—
a11(E)	25	#4	3'-5"	—
a12(E)	92	#5	10'-3"	—
b3(E)	62	#4	29'-8"	—
b4(E)	183	#9	29'-9"	—
b5(E)	4	#4	14'-8"	—
b6(E)	4	#4	14'-7"	—
d(E)	68	#5	5'-7"	—
d2(E)	68	#5	7'-11"	—
e8(E)	32	#4	14'-8"	—
e9(E)	4	#8	14'-8"	—
t(E)	152	#4	9'-8"	—
w(E)	80	#5	20'-4"	—
w1(E)	40	#5	17'-0"	—
w2(E)	80	#5	10'-3"	—
Concrete Superstructure			Cu. Yd.	117.3
Concrete Structures			Cu. Yd.	23.7
Reinforcement Bars, Epoxy Coated			Pound	31020