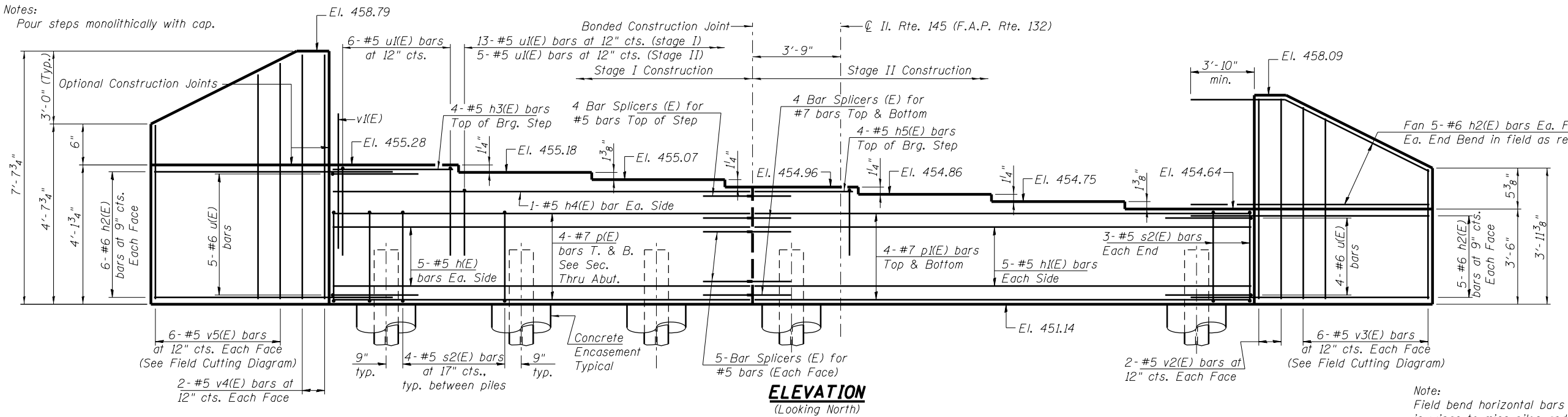
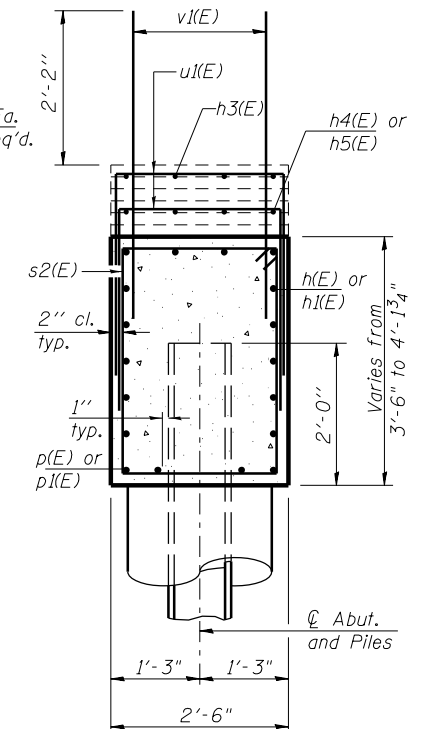


Notes:

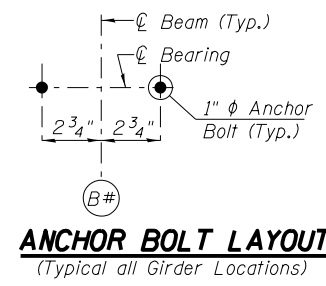
Four steps monolithically with cap.



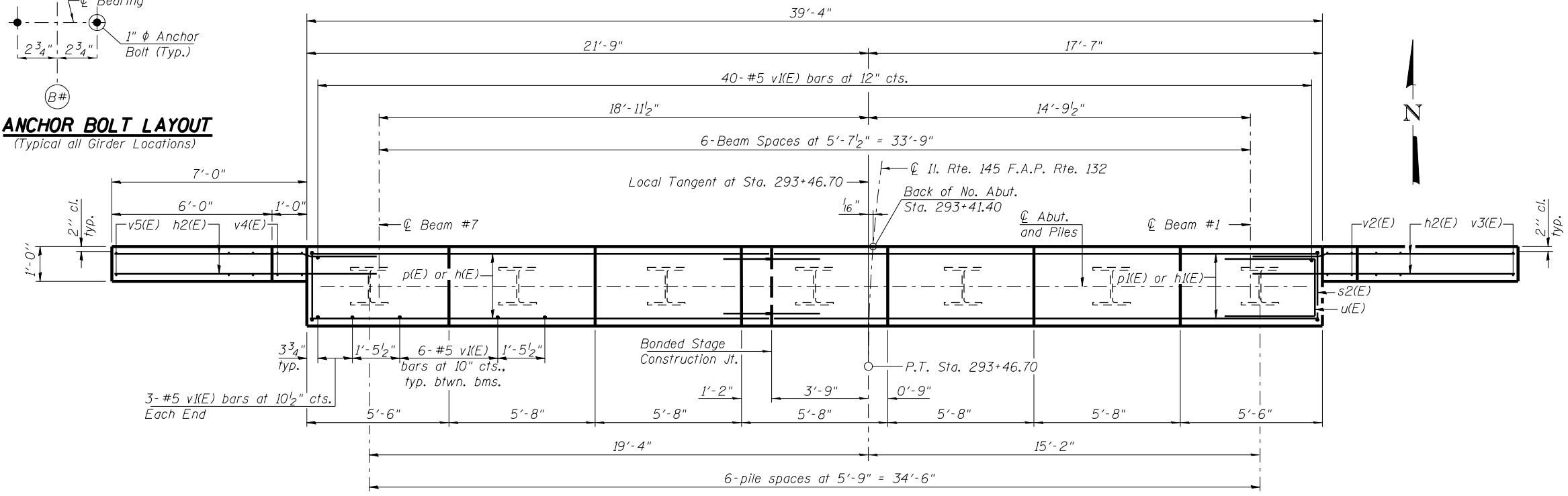
**ELEVATION**  
(Looking North)



**SEC. THRU ABUT.**



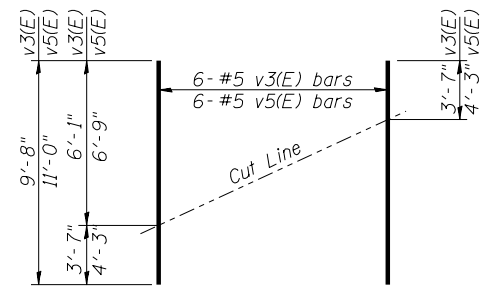
**ANCHOR BOLT LAYOUT**  
(Typical all Girder Locations)



**PLAN**

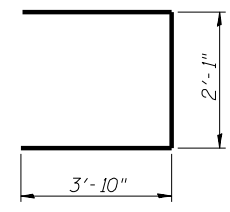
**PILE DATA**

Type: HP 12x63  
 Nominal Required Bearing: 497 kips  
 Factored Resistance Available: 273 kips  
 Factored Resistance Available During an Extreme Event I: 497 kips  
 Est. Length: 35 Feet  
 No. Production Piles: 6  
 No. Test Piles: 1 (In Stage I Area)

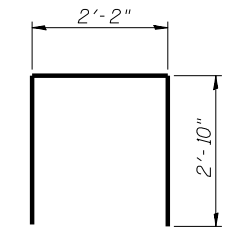


**FIELD CUTTING DIAGRAM**

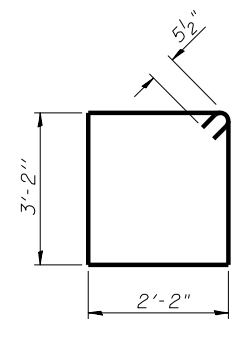
Order v3(E) & v5(E) bars full length. Cut as bars shown and use remainder of bars in opposite face.



**BAR u(E)**



**BAR u(E)**



**BAR s2(E)**

**BILL OF MATERIAL (No. Abut.)**

Bar	No.	Size	Length	Shape
h(E)	10	#5	17'-8"	—
h1(E)	10	#5	21'-0"	—
h2(E)	42	#6	10'-10"	—
h3(E)	4	#5	5'-2"	—
h4(E)	2	#5	17'-8"	—
h5(E)	4	#5	4'-2"	—
p(E)	8	#7	17'-8"	—
p1(E)	8	#7	21'-0"	—
s2(E)	30	#5	11'-7"	□
u(E)	9	#6	9'-9"	U
u1(E)	24	#5	7'-10"	U
v1(E)	82	#5	4'-4"	—
v2(E)	4	#5	6'-7"	—
v3(E)	6	#5	9'-8"	—
v4(E)	4	#5	7'-3"	—
v5(E)	6	#5	11'-0"	—
Structure Excavation		Cu. Yd.	84	
Concrete Structures		Cu. Yd.	17.0	
Reinforcement Bars, Epoxy Coated		Pound	3040	
Furnishing Steel Piles, HP12x63		Foot	210	
Driving Piles		Foot	210	
Test Pile, HP12x63		Each	1	
Concrete Encasement		Cu. Yd.	2.4	

For details of Bar Splicers, see sheet 27 of 28.  
 For details of piles and Concrete Encasement, see sheet 26 of 28.