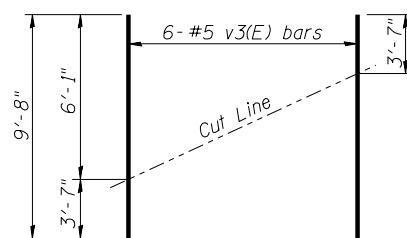


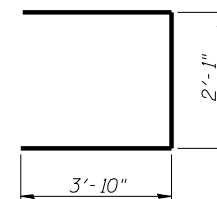
PILE DATA

Type: HP 12x63
 Nominal Required Bearing: 497 kips
 Factored Resistance Available: 273 kips
 Factored Resistance Available During an Extreme Event I: 497 kips
 Est. Length: 34 Feet
 No. Production Piles: 6
 No. Test Piles: 1 (In Stage I Area)

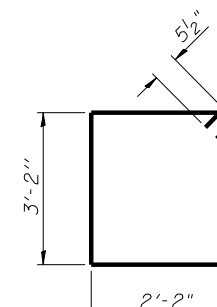


FIELD CUTTING DIAGRAM

Order v3(E) full length. Cut as shown and use remainder of bars in opposite face.



BAR u(E)



BAR s2(E)

BILL OF MATERIAL (So. Abut.)

Bar	No.	Size	Length	Shape
h(E)	10	#5	17'-8"	—
h1(E)	10	#5	21'-0"	—
h2(E)	40	#6	10'-10"	—
p(E)	8	#7	17'-8"	—
p1(E)	8	#7	21'-0"	—
s2(E)	30	#5	11'-7"	□
u(E)	8	#6	9'-9"	□
v1(E)	82	#5	4'-4"	—
v2(E)	8	#5	6'-7"	—
v3(E)	12	#5	9'-8"	—
Structure Excavation			Cu. Yd.	82
Concrete Structures			Cu. Yd.	16.2
Reinforcement Bars, Epoxy Coated			Pound	2710
Furnishing Steel Piles, HP12x63			Foot	204
Driving Piles			Foot	204
Test Pile, HP12x63			Each	1
Concrete Encasement			Cu. Yd.	2.4

For details of Bar Splicers, see sheet 27 of 28. For details of piles and Concrete Encasement, see sheet 26 of 28.