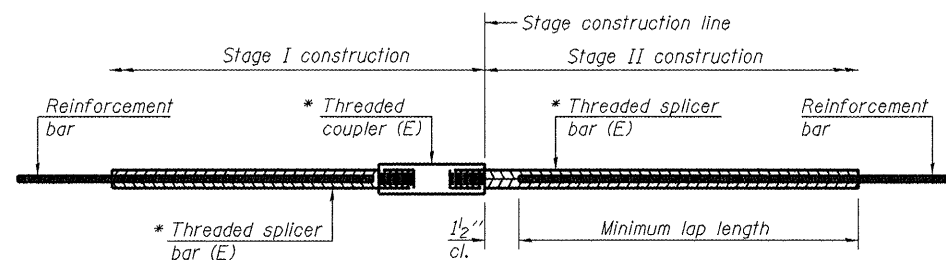


HANSON
 PROFESSIONAL DESIGN FIRM LICENSE #184-001084
 © Copyright Hanson Professional Services Inc. 2012



STANDARD BAR SPLICER ASSEMBLY

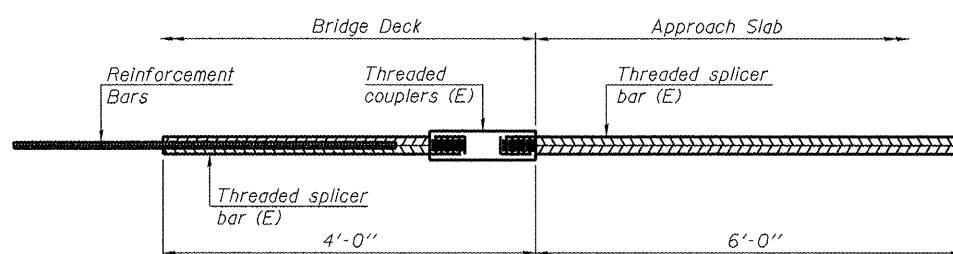
Bar size to be spliced	Minimum Lap Lengths			
	Table 1	Table 2	Table 3	Table 4
3, 4	1'-5"	1'-11"	2'-1"	2'-4"
5	1'-9"	2'-5"	2'-7"	2'-11"
6	2'-1"	2'-11"	3'-1"	3'-6"
7	2'-9"	3'-10"	4'-2"	4'-8"
8	3'-8"	5'-1"	5'-5"	6'-2"
9	4'-7"	6'-5"	6'-10"	7'-9"

Table 1: Black bar, 0.8 Class C
 Table 2: Black bar, Top bar lap, 0.8 Class C
 Table 3: Epoxy bar, 0.8 Class C
 Table 4: Epoxy bar, Top bar lap, 0.8 Class C

Threaded splicer bar length = min. lap length + 1 1/2" + thread length

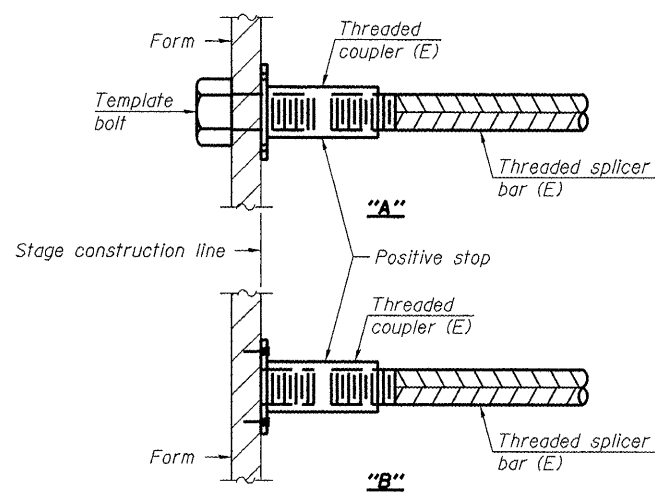
* Epoxy not required on Bar Splicer Assembly components used in conjunction with black bars.

Location	Bar size	No. assemblies required	Table for minimum lap length
Superstructure	#5	428	2'-7"
Diaphragms	#6	16	3'-1"
Bridge Appr. Slabs	#4	50	2'-1"
Bridge Appr. Slabs	#5	92	2'-7"
Bridge Appr. Slab Footings	#5	80	2'-7"
Abutments	#5	24	2'-7"
Abutments	#7	16	4'-8"
Pier Crashwalls	#6	64	3'-6"
Pier Caps	#4	4	2'-1"
Pier Caps	#5	20	2'-7"
Pier Caps	#8	24	6'-2"



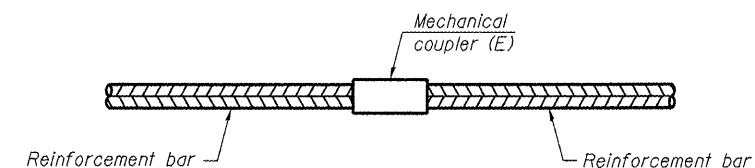
BAR SPLICER ASSEMBLY FOR #5 BAR ON INTEGRAL OR SEMI-INTEGRAL ABUTMENTS

No. required = 86



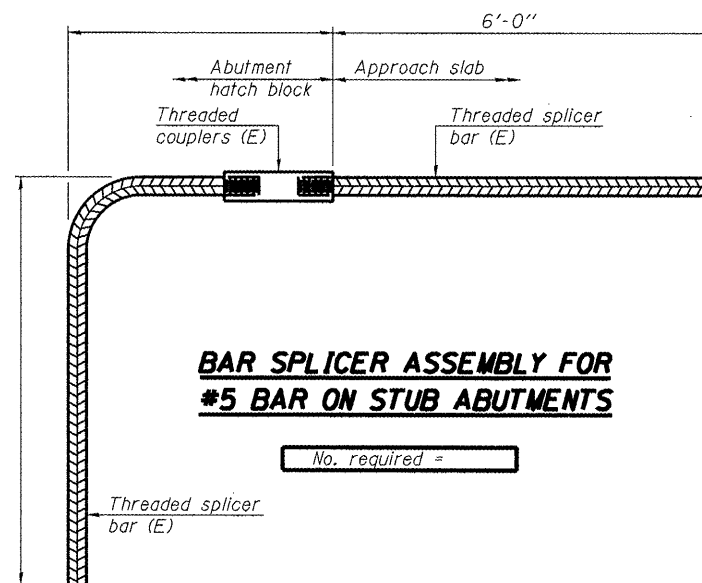
INSTALLATION AND SETTING METHODS

"A" : Set bar splicer assembly by means of a template bolt.
 "B" : Set bar splicer assembly by nailing to wood forms or cementing to steel forms.
 (E) : Indicates epoxy coating.



STANDARD MECHANICAL SPLICER

Location	Bar size	No. assemblies required
Pier 1 Columns	#7	48
Pier 2 Columns	#7	48



BAR SPLICER ASSEMBLY FOR #5 BAR ON STUB ABUTMENTS

NOTES

Splicer bars shall be deformed with threaded ends and have a minimum 60 ksi yield strength.
 All reinforcement shall be lapped and tied to the splicer bars.
 Bar splicer assemblies shall be epoxy coated according to the requirements for reinforcement bars. See Section 508 of the Standard Specifications.
 See approved list of bar splicer assemblies and mechanical splicers for alternatives.

BSD-1

11-1-09

FILE NAME * 0760028-78134.dgn	USER NAME * huffm00028	DESIGNED - BDC	REVISED -
		CHECKED - MNM	REVISED -
		DRAWN - Rood and DAB	REVISED -
		CHECKED - MNM	REVISED -

STATE OF ILLINOIS
DEPARTMENT OF TRANSPORTATION

BAR SPLICER ASSEMBLY AND MECHANICAL SPLICER DETAILS
STRUCTURE NO. 076-0028

SHEET NO. 27 OF 28 SHEETS

F.A.P. RTE. 132	SECTION 1038-1	COUNTY Pope	TOTAL SHEETS 52	SHEET NO. 51
CONTRACT NO. 78134			ILLINOIS FED. AID PROJECT	