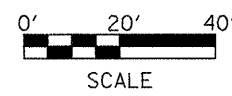
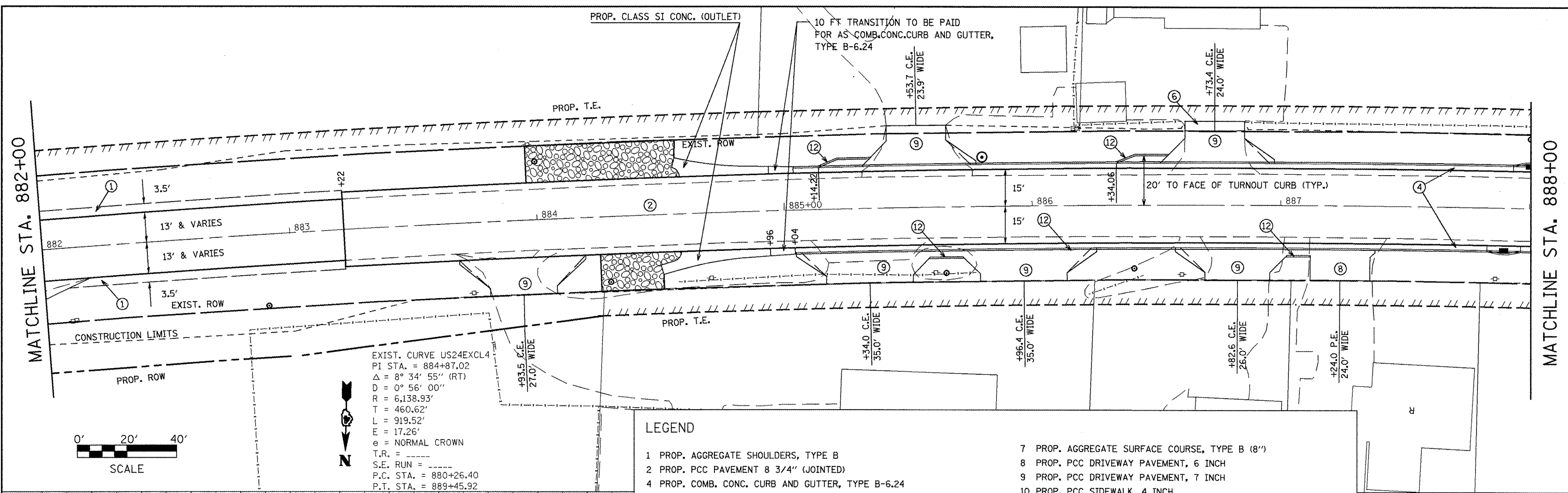


PLAN	SURVEYED	DATE
	PLOTTED	
	CHECKED	
	BY	
	NO.	
	FILE NAME	

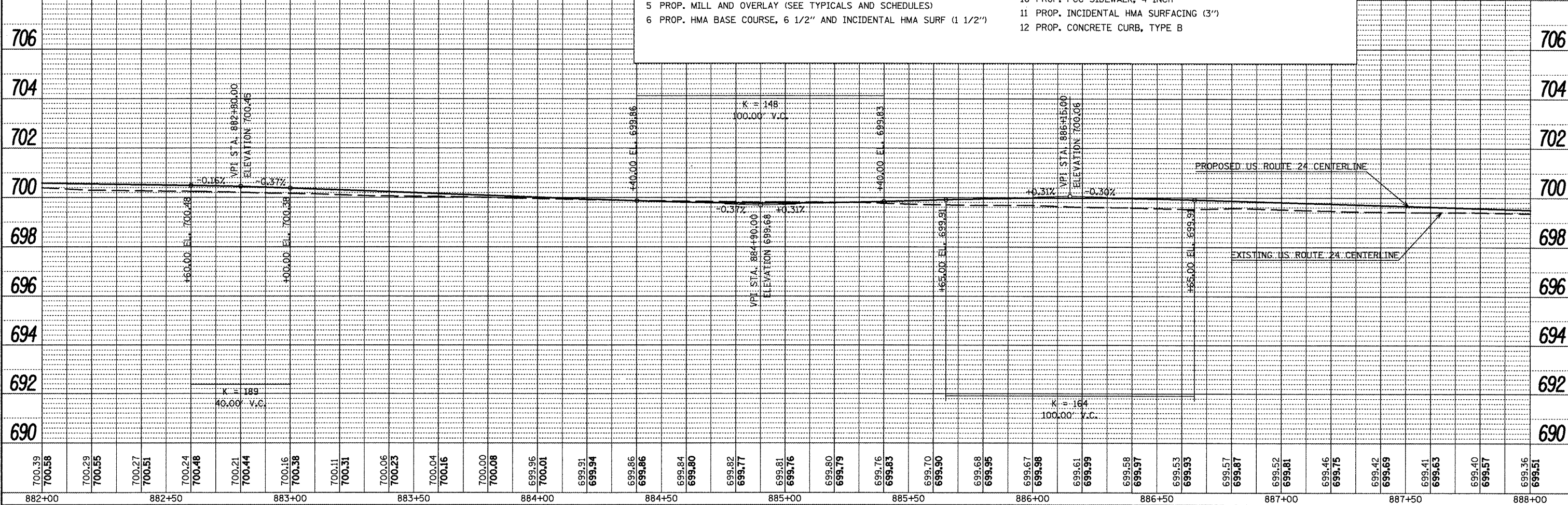
PROFILE	SURVEYED	DATE
	PLOTTED	
	CHECKED	
	BY	
	NO.	
	STRUCTURE NOTATIONS CHRD	



EXIST. CURVE US24EXCL4
 PI STA. = 884+87.02
 $\Delta = 8^\circ 34' 55''$ (RT)
 $D = 0^\circ 56' 00''$
 $R = 6,138.93'$
 $T = 460.62'$
 $L = 919.52'$
 $E = 17.26'$
 $e =$ NORMAL CROWN
 T.R. =
 S.E. RUN =
 P.C. STA. = 880+26.40
 P.T. STA. = 889+45.92

LEGEND

- 1 PROP. AGGREGATE SHOULDERS, TYPE B
- 2 PROP. PCC PAVEMENT 8 3/4" (JOINTED)
- 4 PROP. COMB. CONC. CURB AND GUTTER, TYPE B-6.24
- 5 PROP. MILL AND OVERLAY (SEE TYPICALS AND SCHEDULES)
- 6 PROP. HMA BASE COURSE, 6 1/2" AND INCIDENTAL HMA SURF (1 1/2")
- 7 PROP. AGGREGATE SURFACE COURSE, TYPE B (8")
- 8 PROP. PCC DRIVEWAY PAVEMENT, 6 INCH
- 9 PROP. PCC DRIVEWAY PAVEMENT, 7 INCH
- 10 PROP. PCC SIDEWALK, 4 INCH
- 11 PROP. INCIDENTAL HMA SURFACING (3")
- 12 PROP. CONCRETE CURB, TYPE B



FILE NAME = plan01.dgn	USER NAME = horstkj	DESIGNED -	REVISED -	STATE OF ILLINOIS DEPARTMENT OF TRANSPORTATION	PLAN AND PROFILE SHEETS		F.A.P. RTE. 317	SECTION 16W-1, RS-3	COUNTY FULTON	TOTAL SHEETS 347	SHEET NO. 56	
PLOT SCALE = 48,1826'' / 1"	PLOT DATE = 3/20/2012	DRAWN -	REVISED -		SCALE:	SHEET NO. OF SHEETS STA.	TO STA.	ILLINOIS FED. AID PROJECT				
CHECKED -	DATE -	REVISOR -	REVISOR -		CONTRACT NO. 88795							