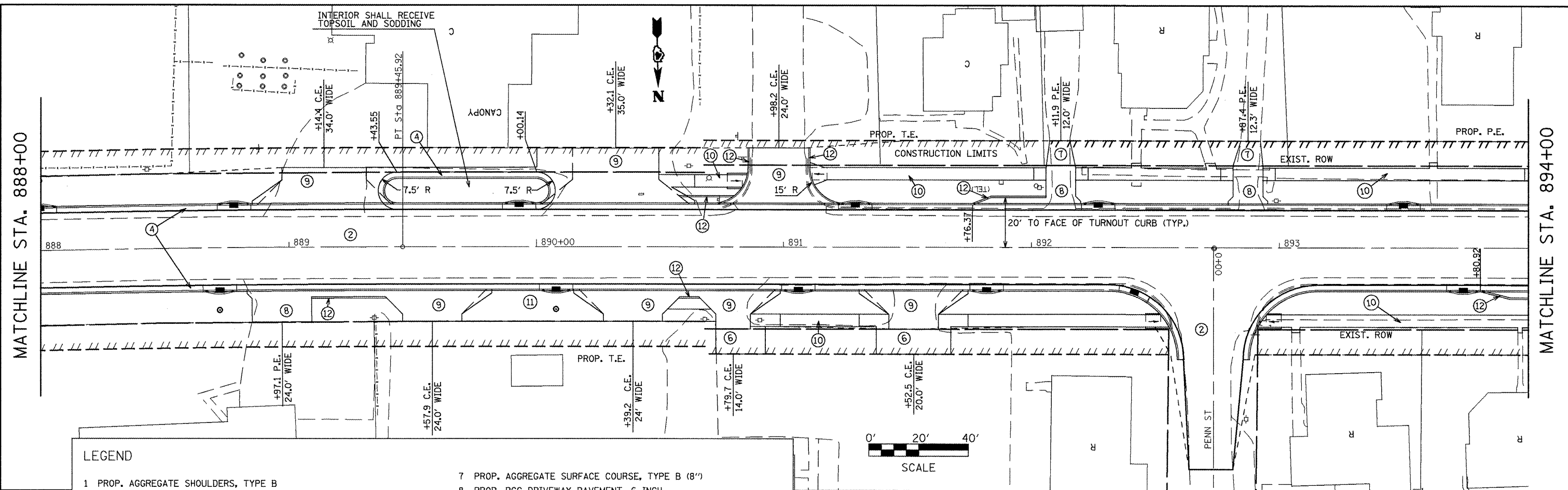


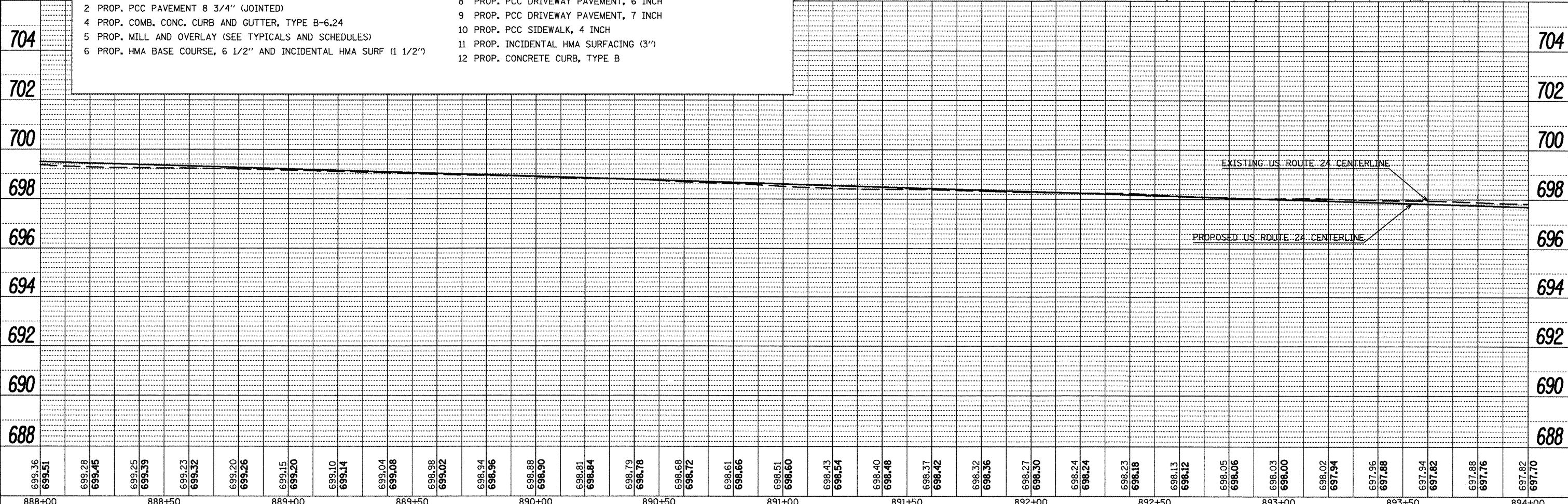
DATE	BY
REVISIONS	
PLANNED	
NOTED	
NO.	
FILE NAME	

DATE	BY
REVISIONS	
PLANNED	
NOTED	
NO.	
FILE NAME	



**LEGEND**

- 1 PROP. AGGREGATE SHOULDERS, TYPE B
- 2 PROP. PCC PAVEMENT 8 3/4" (JOINTED)
- 4 PROP. COMB. CONC. CURB AND GUTTER, TYPE B-6.24
- 5 PROP. MILL AND OVERLAY (SEE TYPICALS AND SCHEDULES)
- 6 PROP. HMA BASE COURSE, 6 1/2" AND INCIDENTAL HMA SURF (1 1/2")
- 7 PROP. AGGREGATE SURFACE COURSE, TYPE B (8")
- 8 PROP. PCC DRIVEWAY PAVEMENT, 6 INCH
- 9 PROP. PCC DRIVEWAY PAVEMENT, 7 INCH
- 10 PROP. PCC SIDEWALK, 4 INCH
- 11 PROP. INCIDENTAL HMA SURFACING (3")
- 12 PROP. CONCRETE CURB, TYPE B



FILE NAME =	USER NAME = horstkj	DESIGNED -	REVISED -	<b>STATE OF ILLINOIS DEPARTMENT OF TRANSPORTATION</b>				<b>PLAN AND PROFILE SHEETS</b>				F.A.P. RTE.	SECTION	COUNTY	TOTAL SHEETS	SHEET NO.
plan01.dgn		DRAWN -	REVISED -									317	16W-1, RS-3	FULTON	347	57
		CHECKED -	REVISED -									CONTRACT NO. 88795				
		DATE -	REVISED -									ILLINOIS FED. AID PROJECT				
PLOT SCALE = 48.1826' / 1"		PLOT DATE = 3/20/2012		SCALE:	SHEET NO.	OF	SHEETS	STA.	TO STA.							