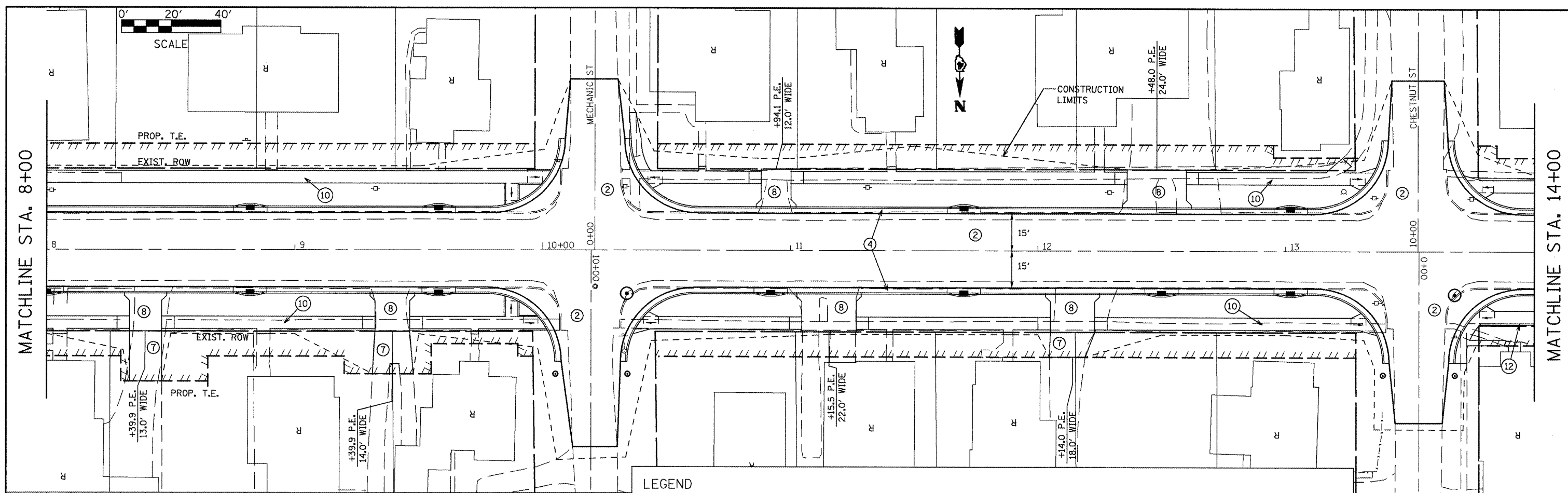


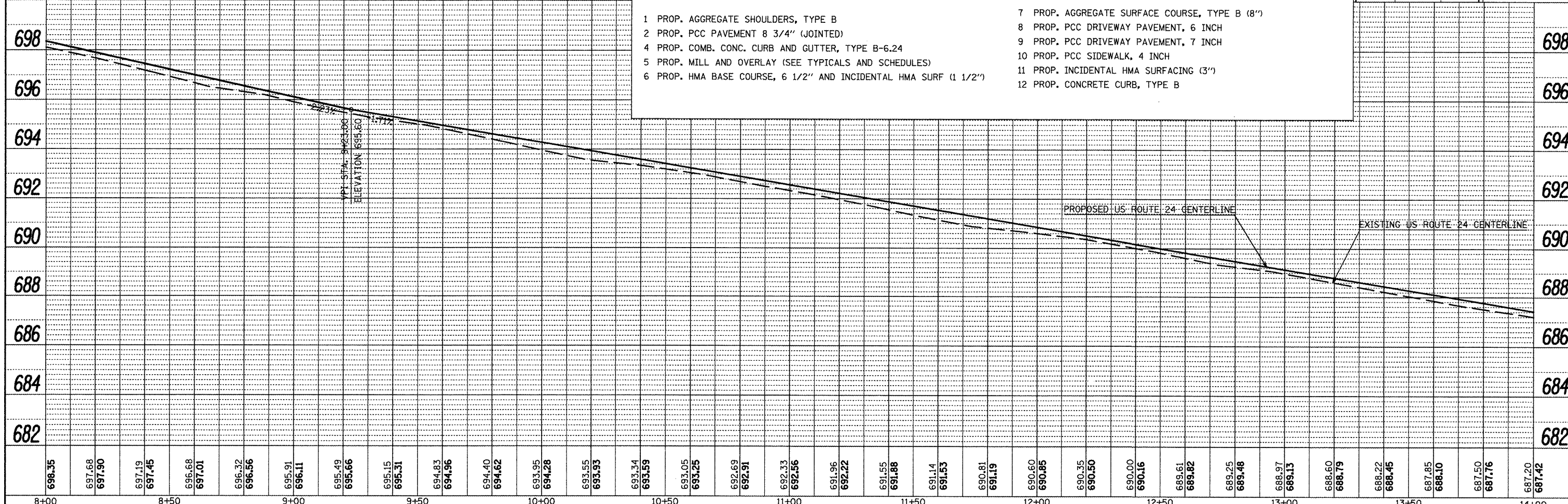
DATE	
BY	
DESIGNED	
PLANNED	
NOTED	
CHECKED	
NO.	
FILE NAME	

DATE	
BY	
DESIGNED	
PLANNED	
NOTED	
CHECKED	
NO.	
FILE NAME	



LEGEND

1 PROP. AGGREGATE SHOULDERS, TYPE B	7 PROP. AGGREGATE SURFACE COURSE, TYPE B (8")
2 PROP. PCC PAVEMENT 8 3/4" (JOINTED)	8 PROP. PCC DRIVEWAY PAVEMENT, 6 INCH
4 PROP. COMB. CONC. CURB AND GUTTER, TYPE B-6.24	9 PROP. PCC DRIVEWAY PAVEMENT, 7 INCH
5 PROP. MILL AND OVERLAY (SEE TYPICALS AND SCHEDULES)	10 PROP. PCC SIDEWALK, 4 INCH
6 PROP. HMA BASE COURSE, 6 1/2" AND INCIDENTAL HMA SURF (1 1/2")	11 PROP. INCIDENTAL HMA SURFACING (3")
	12 PROP. CONCRETE CURB, TYPE B



FILE NAME =	USER NAME = horstkj	DESIGNED -	REVISED -	PLAN AND PROFILE SHEETS				F.A.P. RTE.	SECTION	COUNTY	TOTAL SHEETS	SHEET NO.
plan01.dgn		DRAWN -	REVISED -	SCALE:	SHEET NO.	OF	SHEETS	STA.	TO STA.	FULTON	347	65
		CHECKED -	REVISED -							CONTRACT NO. 88795		
		DATE -	REVISED -							ILLINOIS FED. AID PROJECT		