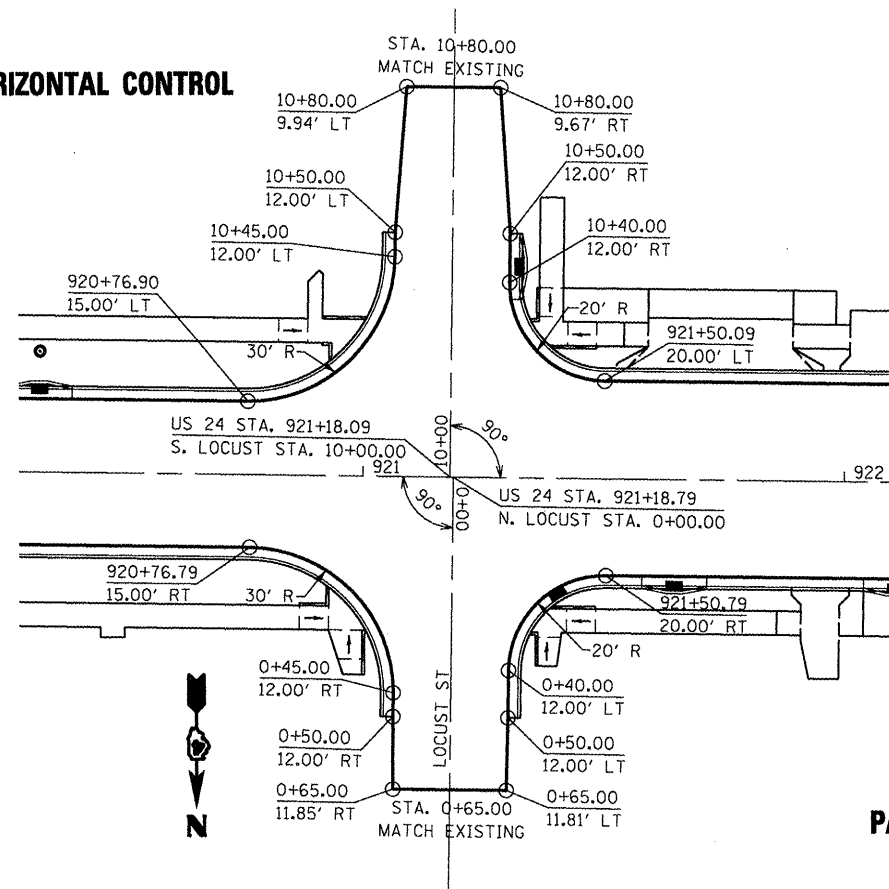
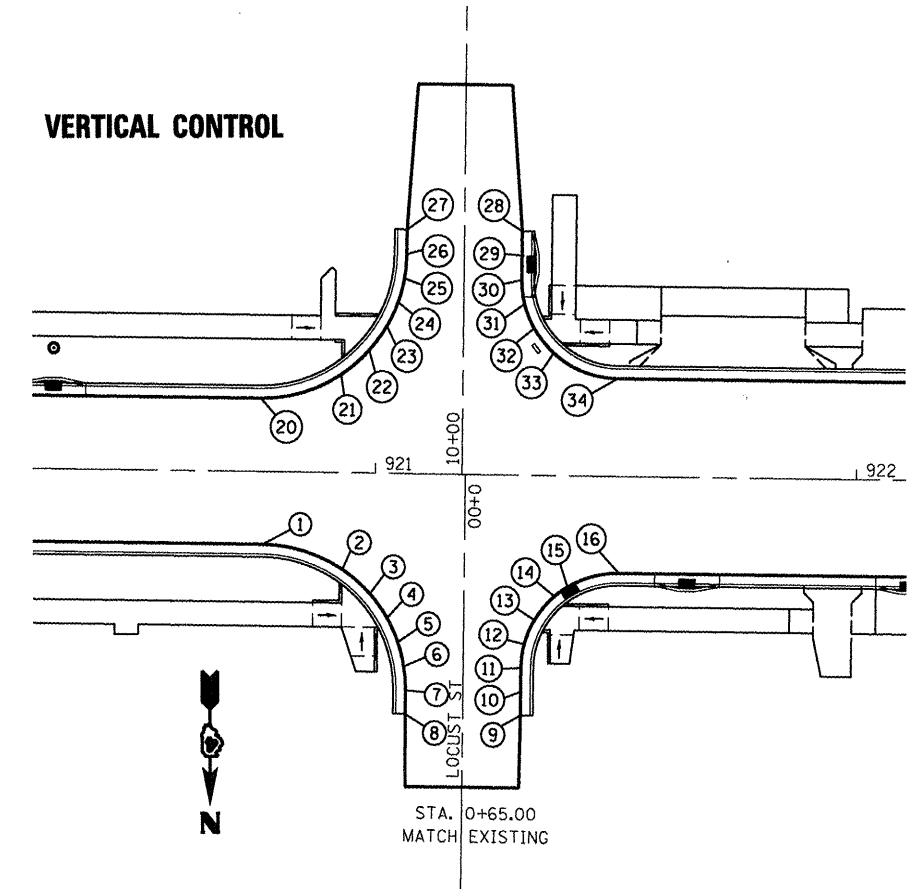


- NOTES:
 1. SEE SIDEROAD PROFILES.
 2. TYPICAL TRANSVERSE JOINT SPACING ON US 24 BETWEEN INTERSECTIONS SHALL BE 14'.

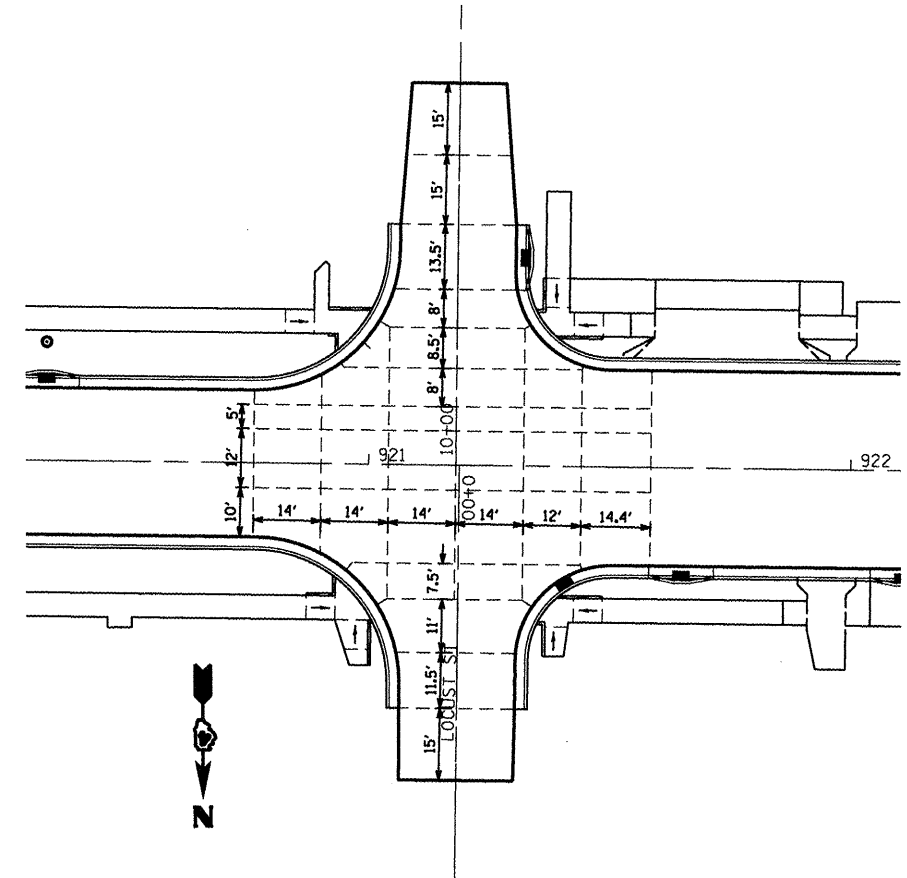
HORIZONTAL CONTROL



VERTICAL CONTROL



PAVEMENT JOINTS



| LOCATION | STATION | OFFSET | ELEVATION |
|--------------|---------|--------|-----------|
| N. LOCUST ST | | | |
| 1 | 0+15.00 | 42.00 | 709.94 |
| 2 | 0+20.00 | 25.42 | 710.14 |
| 3 | 0+25.00 | 19.64 | 710.22 |
| 4 | 0+30.00 | 16.02 | 710.30 |
| 5 | 0+35.00 | 13.72 | 710.36 |
| 6 | 0+40.00 | 12.42 | 710.42 |
| 7 | 0+45.00 | 12.00 | 710.48 |
| 8 | 0+50.00 | 12.00 | 710.52 |
| 9 | 0+50.00 | 12.00 | 710.52 |
| 10 | 0+45.00 | 12.00 | 710.48 |
| 11 | 0+40.00 | 12.00 | 710.44 |
| 12 | 0+35.00 | 12.64 | 710.40 |
| 13 | 0+30.00 | 14.68 | 710.36 |
| 14 | 0+25.00 | 18.77 | 710.32 |
| 15 | 0+23.00 | 21.46 | 710.30 |
| 16 | 0+20.00 | 32.00 | 710.48 |

| LOCATION | STATION | OFFSET | ELEVATION |
|--------------|----------|--------|-----------|
| S. LOCUST ST | | | |
| 20 | 10+15.00 | 42.00 | 709.93 |
| 21 | 10+20.00 | 25.43 | 709.82 |
| 22 | 10+25.00 | 19.65 | 709.75 |
| 23 | 10+30.00 | 16.02 | 709.67 |
| 24 | 10+35.00 | 13.72 | 709.58 |
| 25 | 10+40.00 | 12.42 | 709.48 |
| 26 | 10+45.00 | 12.00 | 709.37 |
| 27 | 10+50.00 | 12.00 | 709.26 |
| 28 | 10+50.00 | 12.00 | 709.26 |
| 29 | 10+45.00 | 12.00 | 709.40 |
| 30 | 10+40.00 | 12.00 | 709.55 |
| 31 | 10+35.00 | 12.64 | 709.69 |
| 32 | 10+30.00 | 14.68 | 709.85 |
| 33 | 10+25.00 | 18.77 | 710.00 |
| 34 | 10+20.00 | 32.00 | 710.27 |