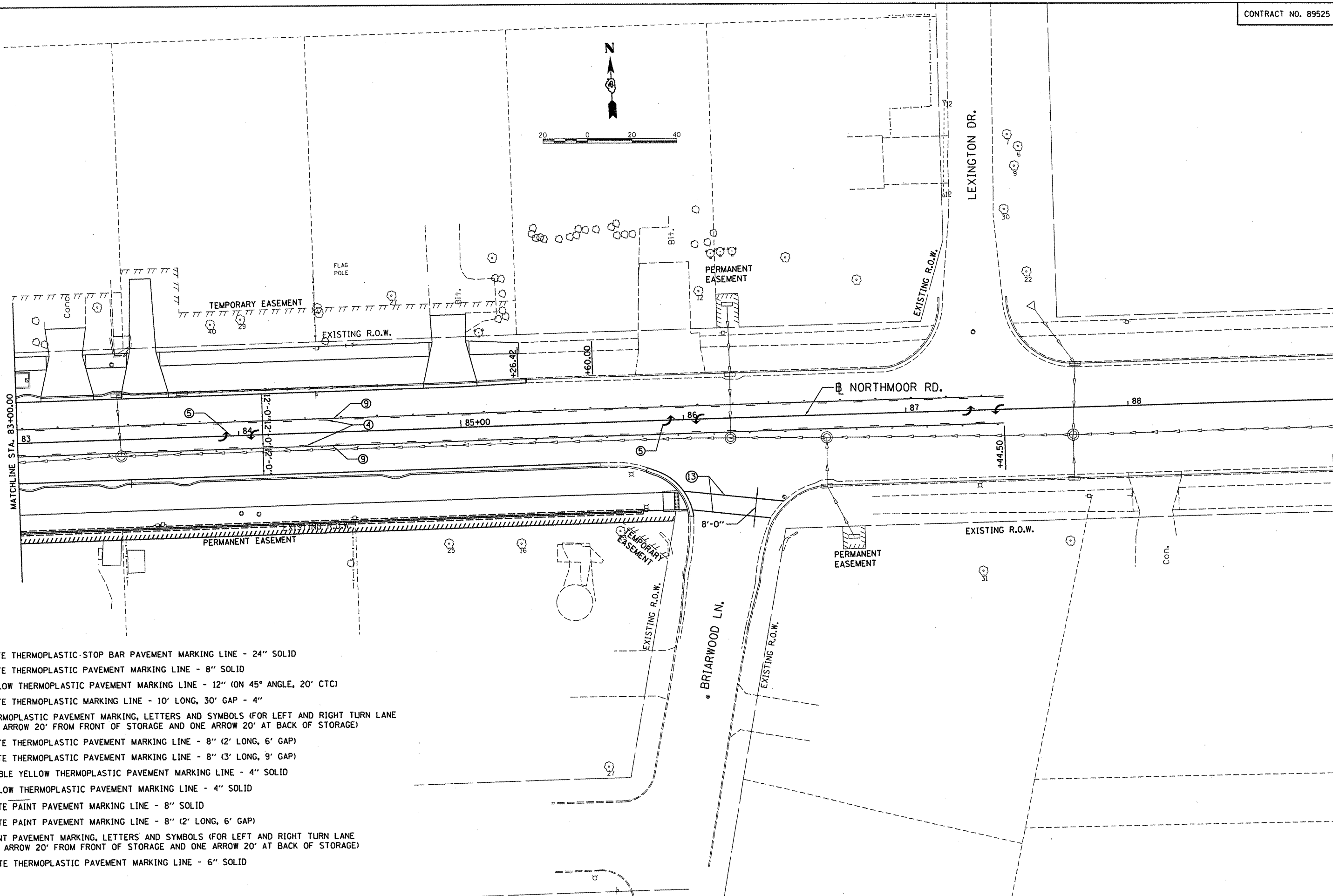


© Copyright Hanson Professional Services Inc. 2012
HANSON
 Hanson Professional Services Inc.



- ① WHITE THERMOPLASTIC STOP BAR PAVEMENT MARKING LINE - 24" SOLID
- ② WHITE THERMOPLASTIC PAVEMENT MARKING LINE - 8" SOLID
- ③ YELLOW THERMOPLASTIC PAVEMENT MARKING LINE - 12" (ON 45° ANGLE, 20' CTC)
- ④ WHITE THERMOPLASTIC MARKING LINE - 10' LONG, 30' GAP - 4"
- ⑤ THERMOPLASTIC PAVEMENT MARKING, LETTERS AND SYMBOLS (FOR LEFT AND RIGHT TURN LANE ONE ARROW 20' FROM FRONT OF STORAGE AND ONE ARROW 20' AT BACK OF STORAGE)
- ⑥ WHITE THERMOPLASTIC PAVEMENT MARKING LINE - 8" (2' LONG, 6' GAP)
- ⑦ WHITE THERMOPLASTIC PAVEMENT MARKING LINE - 8" (3' LONG, 9' GAP)
- ⑧ DOUBLE YELLOW THERMOPLASTIC PAVEMENT MARKING LINE - 4" SOLID
- ⑨ YELLOW THERMOPLASTIC PAVEMENT MARKING LINE - 4" SOLID
- ⑩ WHITE PAINT PAVEMENT MARKING LINE - 8" SOLID
- ⑪ WHITE PAINT PAVEMENT MARKING LINE - 8" (2' LONG, 6' GAP)
- ⑫ PAINT PAVEMENT MARKING, LETTERS AND SYMBOLS (FOR LEFT AND RIGHT TURN LANE ONE ARROW 20' FROM FRONT OF STORAGE AND ONE ARROW 20' AT BACK OF STORAGE)
- ⑬ WHITE THERMOPLASTIC PAVEMENT MARKING LINE - 6" SOLID

FILE NAME =	USER NAME = dows00878	DESIGNED - DLC	REVISED -
It:\09Jobs\09L0027A\CADD\Road\Sheet\104mk.dgn		DRAWN - DLC	REVISED -
PLOT SCALE = 40.0000 / in.		CHECKED - MGD	REVISED -
PLOT DATE = 04/02/2012		DATE - 03/27/12	REVISED -

STATE OF ILLINOIS
DEPARTMENT OF TRANSPORTATION

NORTHMOOR ROAD STAGE 2 IMPROVEMENT	
PAVEMENT MARKING PLAN	
SCALE: 1"=20'	SHEET NO. OF SHEETS STA. 83+00.00 TO STA. 85+60.00

F.A.U. RTE.	SECTION	COUNTY	TOTAL SHEETS	SHEET NO.
6647	05-00302-01-PV	PEORIA	125	49
FED. ROAD DIST. NO. 11-00047-03-PV		ILLINOIS FED. AID PROJECT		CONTRACT NO. 89525
				M-5093(137)