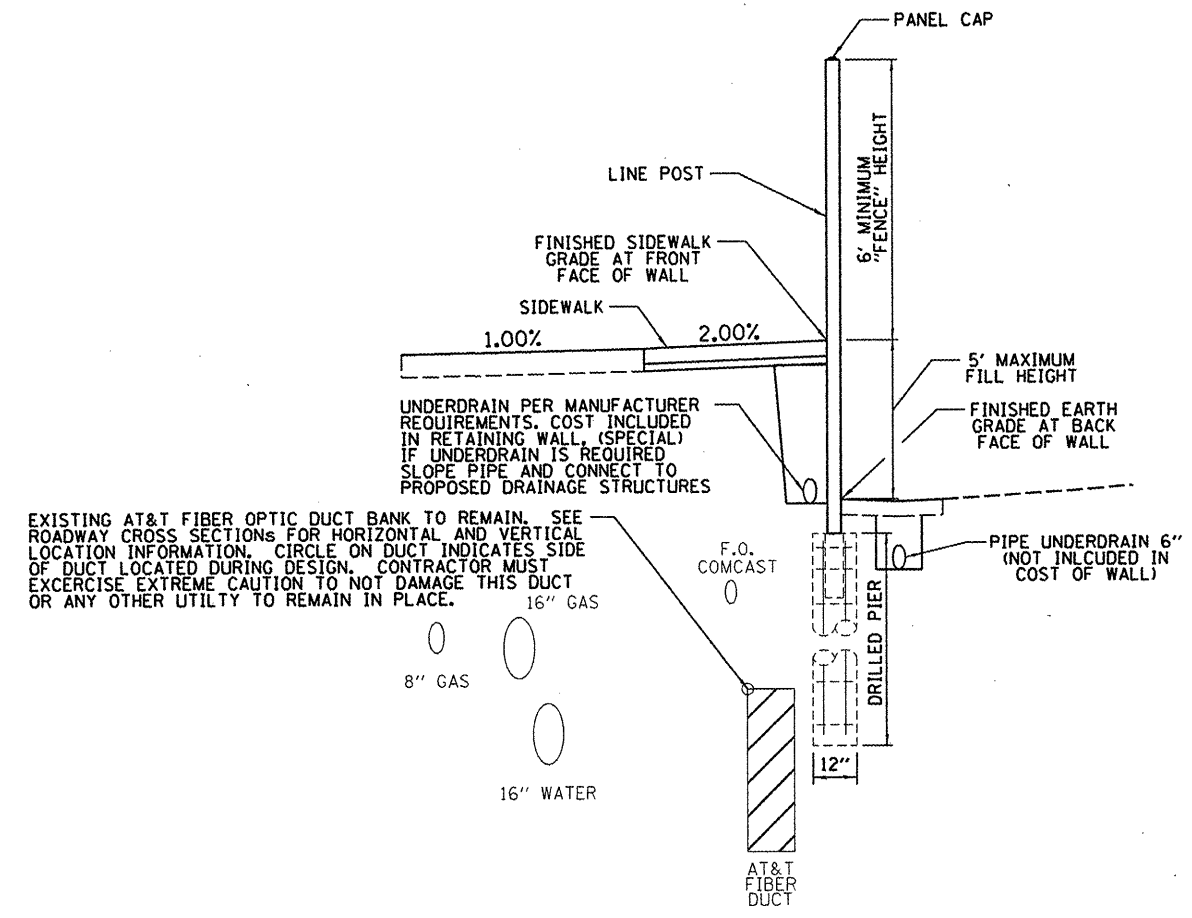
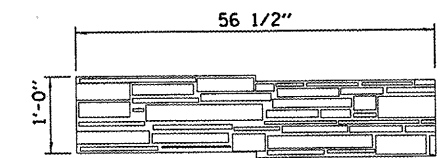


ELEVATION - 12' MAXIMUM SCREENING WALL WITH DRILLED PIERS



SECTION - SCREENING WALL AND PIER



GENERAL RUSTICATION DETAIL
PATTERN AS INDICATED IN SPECIFICATIONS OR
AS APPROVED BY THE ENGINEER

(DIMENSION PROVIDED TO HELP INDICATE SCALE ONLY)

NOTES:
THE DETAILS PROVIDED ON THIS SHEET ARE ONLY MEANT TO PROVIDE SOME OF THE GENERAL DESIGN GOALS AND PARAMETERS FOR THE PRECAST CONCRETE SCREENING WALL. THE CONTRACTOR WILL BE RESPONSIBLE FOR DESIGNING THE WALL IN ACCORDANCE WITH THE PROJECT SPECIAL PROVISIONS. THE WALL SUPPLIER SELECTED BY THE CONTRACTOR WILL BE RESPONSIBLE FOR DESIGN OF THE WALL INCLUDING POST SPACING, WALL PANELS, FOUNDATIONS, ETC.

© Copyright Hanson Professional Services Inc. 2012
HANSON
Hanson Professional Services Inc.

FILE NAME =	USER NAME = dsws00878	DESIGNED -	REVISED -	STATE OF ILLINOIS DEPARTMENT OF TRANSPORTATION	NORTHMOOR ROAD STAGE 2 IMPROVEMENT SCREENING WALL DETAILS	F.A.U. RTE.	SECTION	COUNTY	TOTAL SHEETS	SHEET NO.
I:\09\Jobs\09L0027A\CADD\Road\Sheet\c-7	@wall.dgn	DRAWN -	REVISED -			6647	05-00302-01-PV	PEORIA	125	64
PLOT SCALE = 20,0000' / in.	CHECKED -	REVISED -	REVISED -			11-00047-03-PV		CONTRACT NO. 89525		
PLOT DATE = 04/02/2012	DATE = 03/27/12	REVISED -	REVISED -			FED. ROAD DIST. NO.	ILLINOIS FED. AID PROJECT	M-509311371		
SCALE: SHEET NO. OF SHEETS STA. TO STA.										