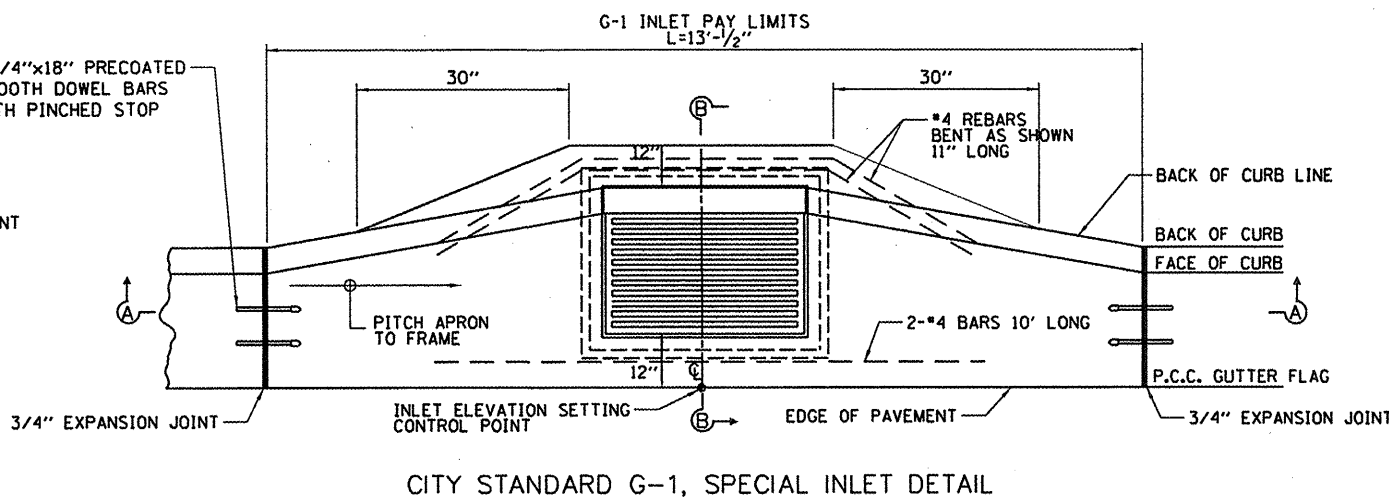
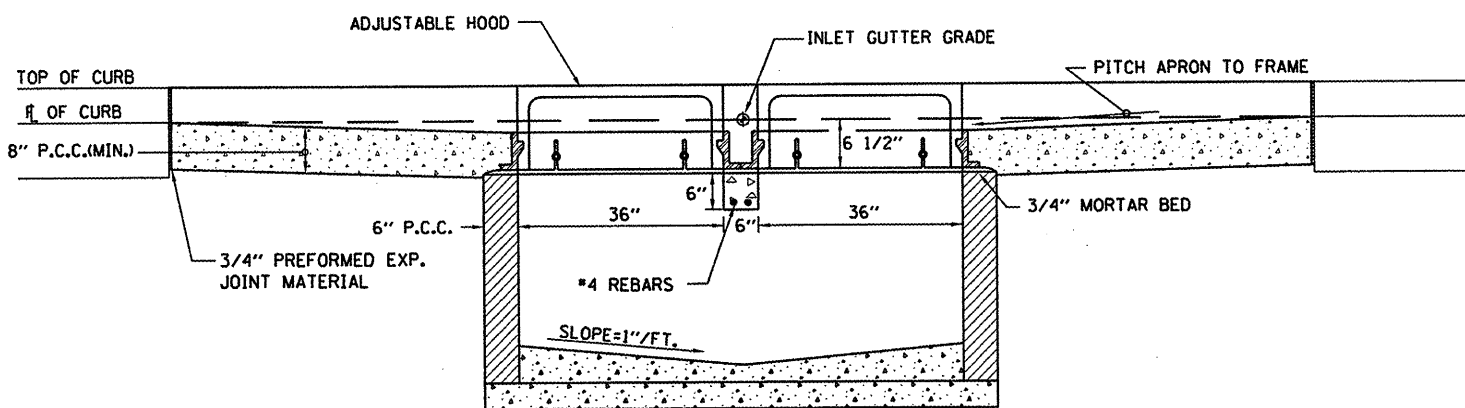


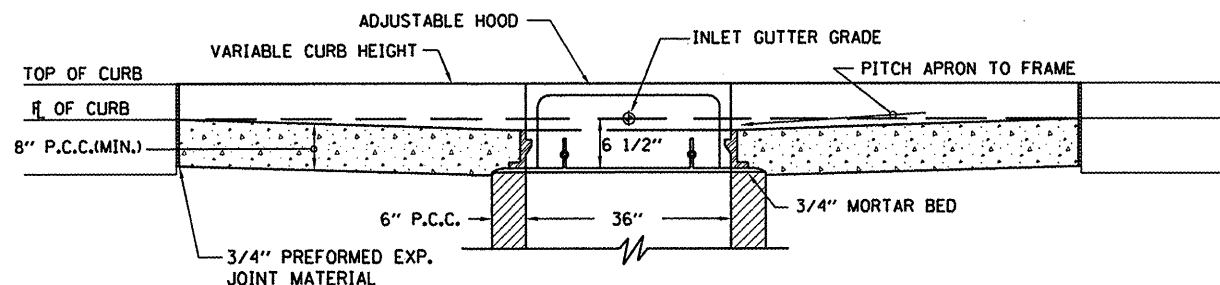
CITY STANDARD G-1, DOUBLE (SPECIAL) INLET DETAIL



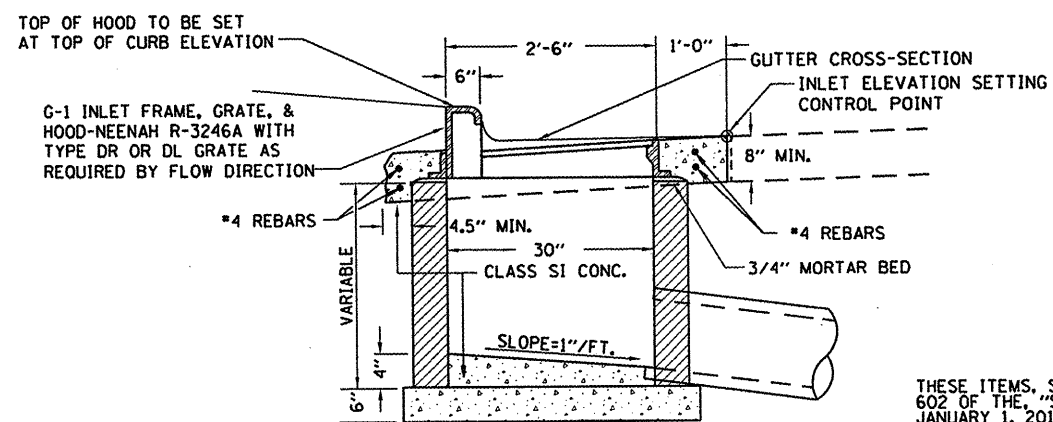
CITY STANDARD G-1, SPECIAL INLET DETAIL



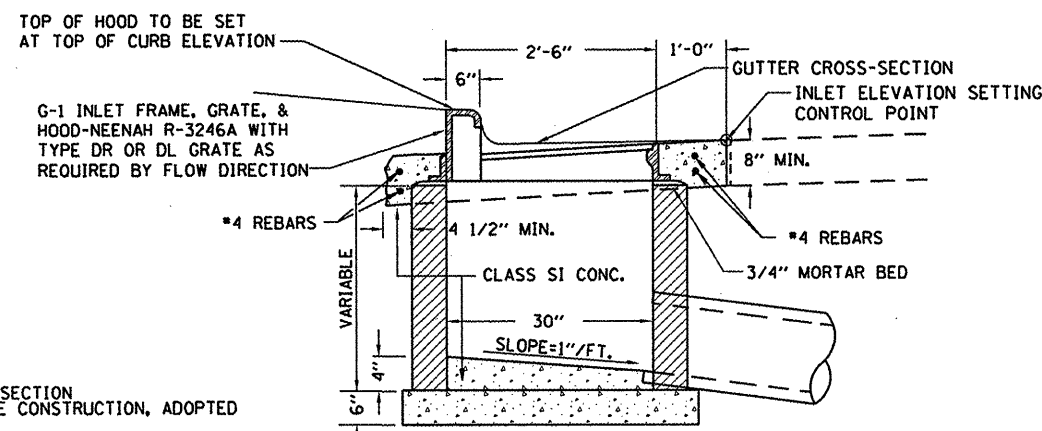
SECTION A-A



SECTION A-A



SECTION B-B



SECTION B-B

INLETS, TYPE G-1, DOUBLE (SPECIAL)

CITY OF PEORIA
INLET, TYPE G-1, SPECIAL

THESE ITEMS SHALL BE CONSTRUCTED IN ACCORDANCE WITH SECTION 602 OF THE "STANDARD SPECIFICATIONS FOR ROAD & BRIDGE CONSTRUCTION, ADOPTED JANUARY 1, 2012", EXCEPT AS PROVIDED HEREIN.

ALL CONCRETE USED FOR CONSTRUCTION OF THE INLET SHALL BE CLASS SI CONCRETE. ALL INLET WALLS SHALL BE 6" THICK.

THIS ITEM SHALL INCLUDE THE INLET CONSTRUCTION COMPLETE INPLACE AS INDICATED HEREIN, INCLUDING INLET CASTING, NECESSARY EXCAVATION, CURB & GUTTER, BASE COURSE, REINFORCEMENT BARS, TRENCH BACKFILL, AND EXPANSION JOINT MATERIAL.

THIS ITEM SHALL BE PAID FOR AT THE CONTRACT UNIT PRICE FOR "INLET, TYPE G-1 (SPECIAL)" OR "INLETS, TYPE G-1, DOUBLE (SPECIAL)" WHICH SHALL BE PAYMENT IN FULL FOR ALL LABOR, MATERIAL, TOOLS, EQUIPMENT NECESSARY TO PERFORM THIS ITEM OF WORK AS INDICATED.

© Copyright Hanson Professional Services Inc. 2012
HANSON
Hanson Professional Services Inc.

| | | | |
|---|-----------------------------|-----------------|-----------|
| FILE NAME = | USER NAME = dows00878 | DESIGNED - DLC | REVISED - |
| 1:\09Jobs\0910027A\CADD\Road\Sheet\0-501det.dgn | | DRAWN - DLC | REVISED - |
| | PLOT SCALE = 10.0000 ' / 1" | CHECKED - MGD | REVISED - |
| | PLOT DATE = 04/02/2012 | DATE - 03/27/12 | REVISED - |

STATE OF ILLINOIS
DEPARTMENT OF TRANSPORTATION

NORTHMOOR ROAD STAGE 2 IMPROVEMENT
DRAINAGE DETAILS
INLETS, TYPE G-1 & TYPE G-1 DOUBLE (SPECIAL)

SCALE: N.T.S. SHEET NO. OF SHEETS STA. TO STA.

| | | | | |
|---------------------|---------------------------|-------------|--------------------|-----------|
| F.A.U. RTE. | SECTION | COUNTY | TOTAL SHEETS | SHEET NO. |
| 6647 | 05-00302-01-PV | PEORIA | 125 | 75 |
| | 11-00047-03-PV | | CONTRACT NO. 89525 | |
| FED. ROAD DIST. NO. | ILLINOIS FED. AID PROJECT | W-50931(37) | | |