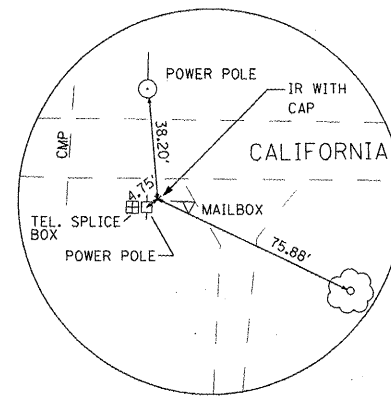
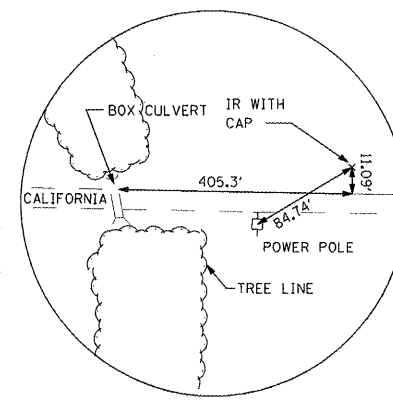


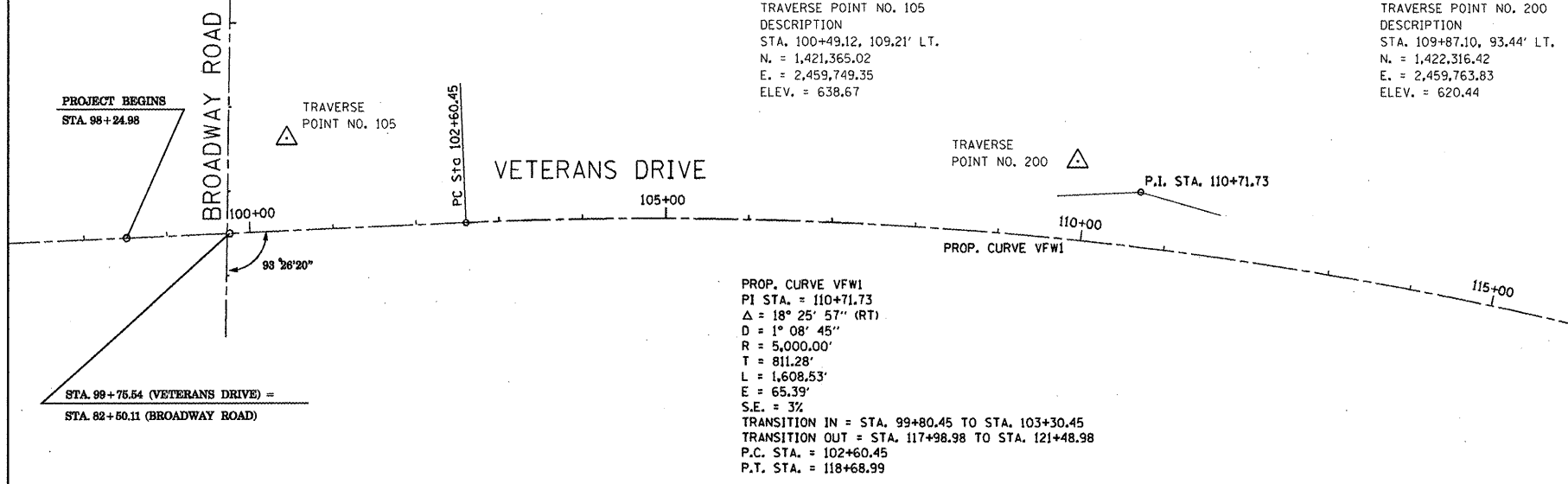
TRAVERSE POINT NO. 105  
DESCRIPTION  
STA. 100+49.12, 109.21' LT.  
N. = 1,421,365.02  
E. = 2,459,749.35  
ELEV. = 638.67



TRAVERSE POINT NO. 200  
DESCRIPTION  
STA. 109+87.10, 93.44' LT.  
N. = 1,422,316.42  
E. = 2,459,763.83  
ELEV. = 620.44

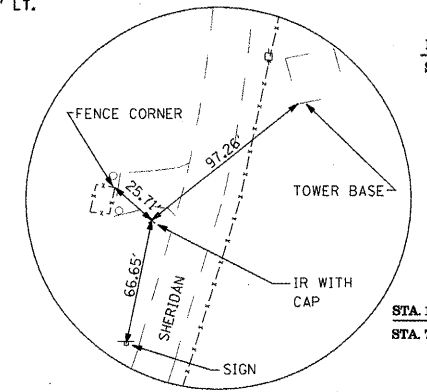


TRAVERSE POINT NO. 210  
DESCRIPTION  
STA. 117+67.87, 277.91' LT.  
N. = 1,423,144.61  
E. = 2,459,715.75  
ELEV. = 624.52

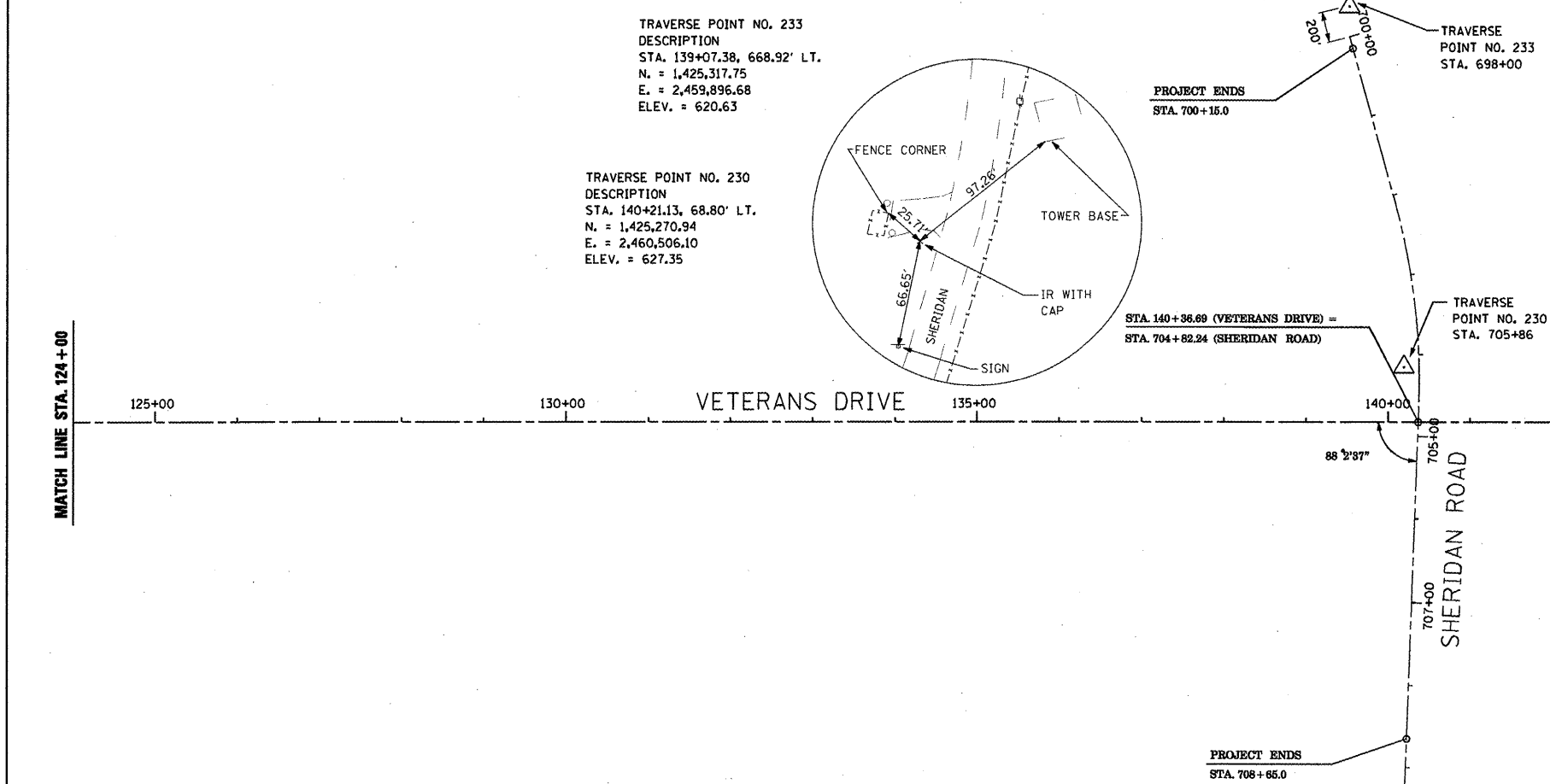


TRAVERSE POINT NO. 233  
DESCRIPTION  
STA. 139+07.38, 668.92' LT.  
N. = 1,425,317.75  
E. = 2,459,896.68  
ELEV. = 620.63

TRAVERSE POINT NO. 230  
DESCRIPTION  
STA. 140+21.13, 68.80' LT.  
N. = 1,425,270.94  
E. = 2,460,506.10  
ELEV. = 627.35



STA. 140+86.69 (VETERANS DRIVE) =  
STA. 704+82.24 (SHERIDAN ROAD)



| BENCHMARKS |                        |           |           |             |
|------------|------------------------|-----------|-----------|-------------|
| BENCHMARK  | DESCRIPTION            | ELEVATION | STATION   | OFFSET      |
| 105        | 1/2" IRON ROD WITH CAP | 638.67    | 100+49.12 | 109.21' LT. |
| 200        | 1/2" IRON ROD WITH CAP | 620.44    | 109+87.10 | 93.44' LT.  |
| 210        | 1/2" IRON ROD WITH CAP | 624.52    | 117+67.87 | 277.91' LT. |
| 220        | 1/2" IRON ROD WITH CAP | 631.73    | 131+27.91 | 616.29' LT. |

| ALIGNMENT COORDINATE TABLE         |           |              |              |
|------------------------------------|-----------|--------------|--------------|
| DESCRIPTION                        | STATION   | NORTHING     | EASTING      |
| P.O.L. PROJECT BEGINS STA. 100+00  | 100+00.00 | 1,421,322.30 | 2,459,861.21 |
| P.I. CURVE NO. 1                   | 110+67.42 | 1,422,392.24 | 2,459,799.25 |
| P.O.L. PROJECT ENDS STA. 140+42.74 | 140+36.68 | 1,425,278.12 | 2,460,576.18 |

