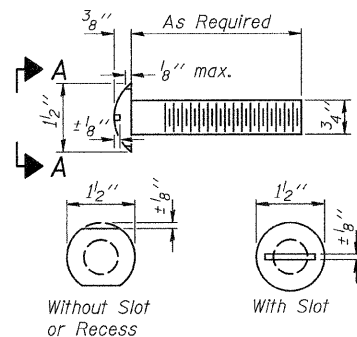
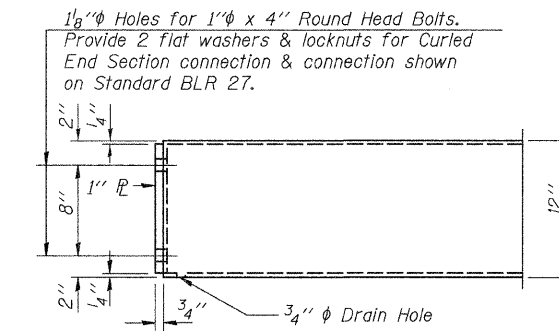
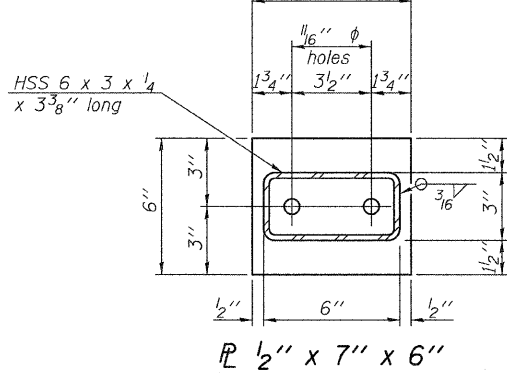
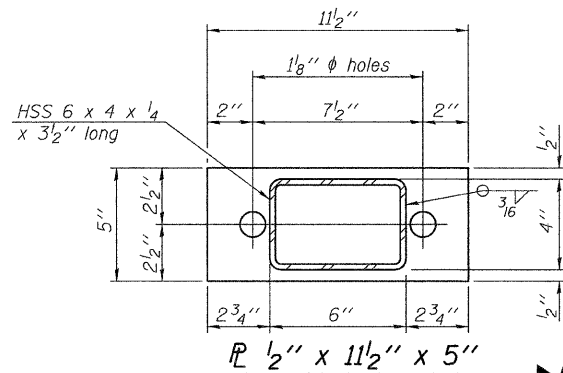


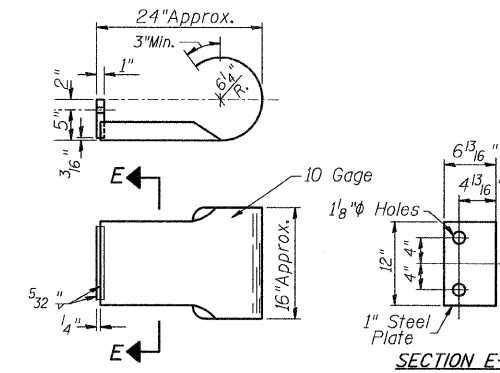
FOR RAIL POST SPACING SEE SH.#5 OF 7



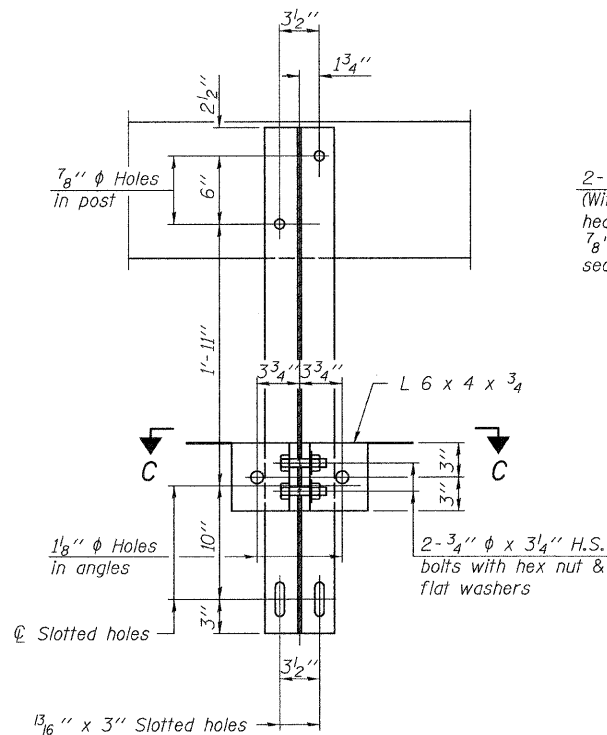
VIEW A-A
ROUND HEAD BOLT



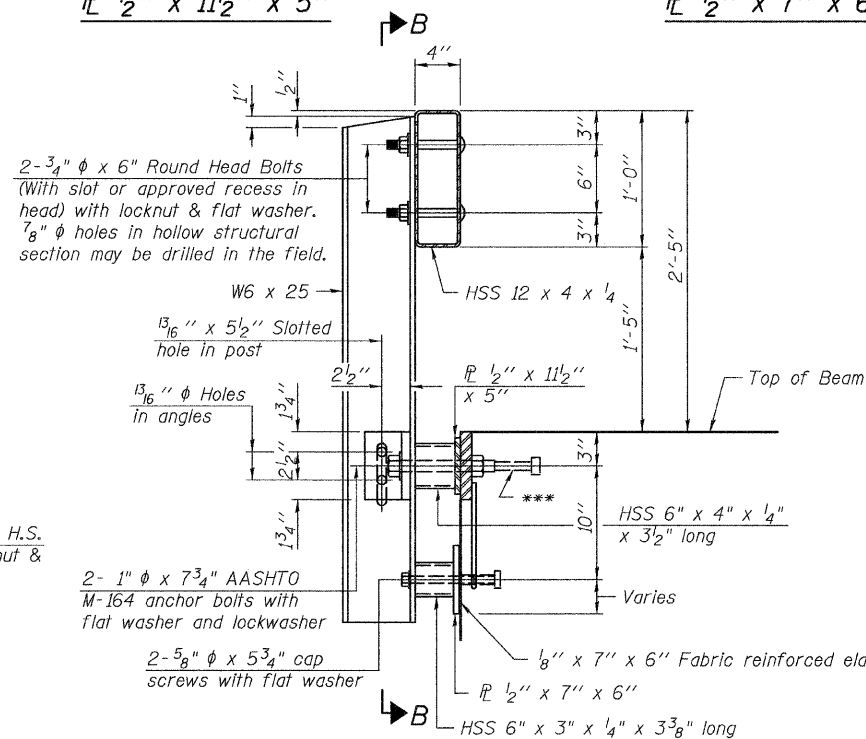
END OF RAIL DETAILS



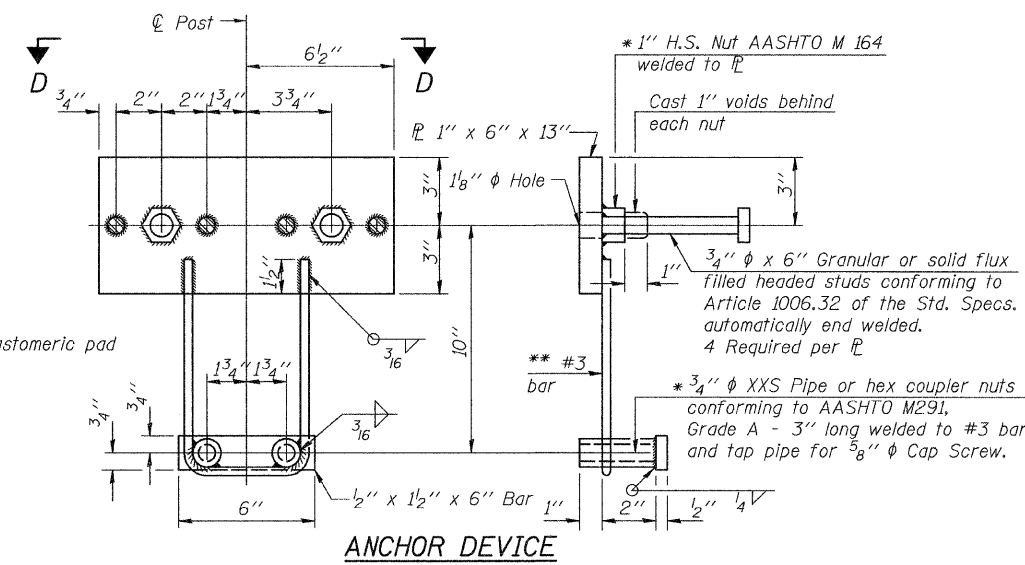
SECTION E-E
CURLLED END SECTION
(2 Req'd) Cost Included with Steel Railing, Type S-1.
Terminal Markers - Direct Applied shall be placed on end of each Curled End Section. (S.W. & N.E. Corners)



SECTION B-B

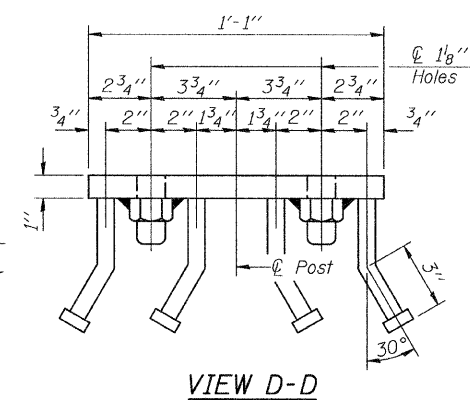


SECTION AT RAILING POST

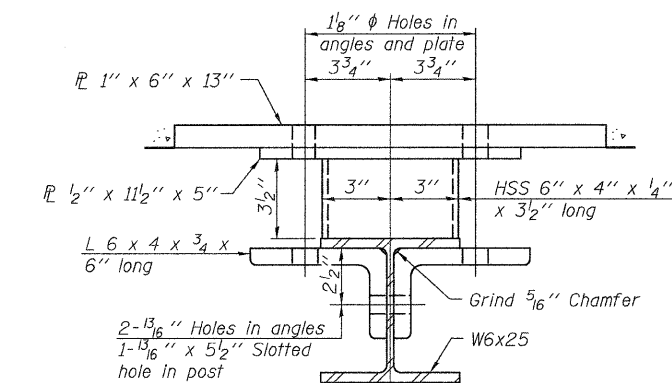


ANCHOR DEVICE

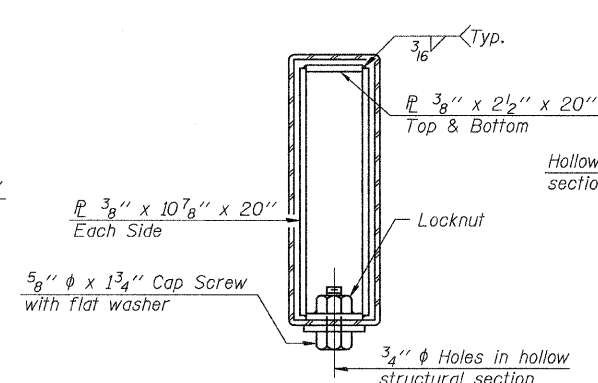
* Threaded areas shall be plugged or blocked off during casting of beam.



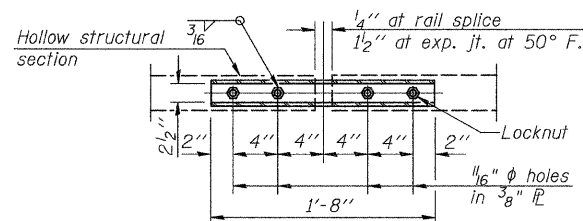
VIEW D-D



SECTION C-C



SECTIONS AT RAIL SPLICE



PLAN-BOTT. SPLICE PL
TYPICAL

** Whenever the lower insert assemblies interfere with strand locations, the #3 bars shall be cut and adjusted in order to allow raising or lowering of the lower inserts. Maximum adjustment not to exceed 1/2 inch.

BILL OF MATERIAL

Item	Unit	Quantity
Steel Railing, Type S-1	FOOT	122

STEEL RAILING, TYPE S-1
MASON COUNTY
SECTION 10-00016-02-BR
C.H. 5 OVER DUFF ARMSTRONG DITCH

SHEET NO. 4 7 SHEETS	ROUTE NO.	SECTION	COUNTY	TOTAL SHEETS	SHEET NO.
	CH 5	10-00016-02-BR	MASON	22	10
S.N. 063-3029			CONTRACT NO. 93568		
FED. ROAD DIST. NO. 7 ILLINOIS			FED. AID PROJECT BRS-0572(305)		