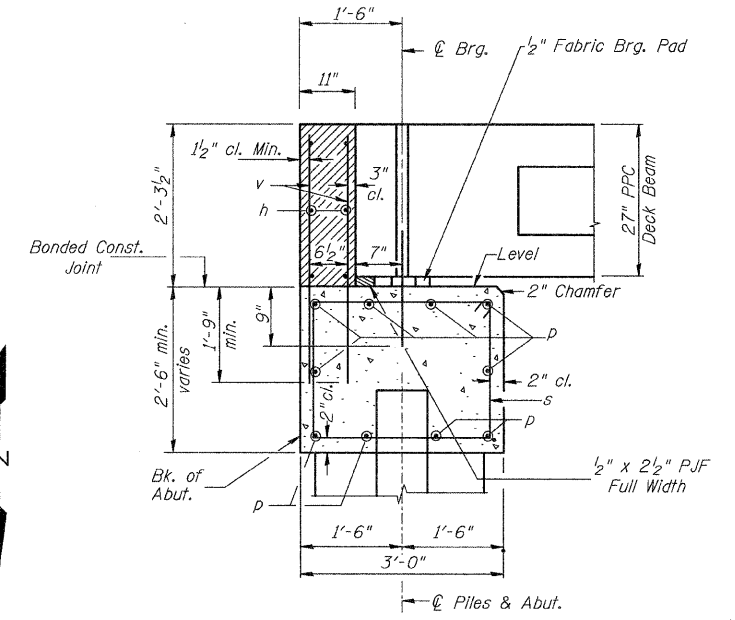
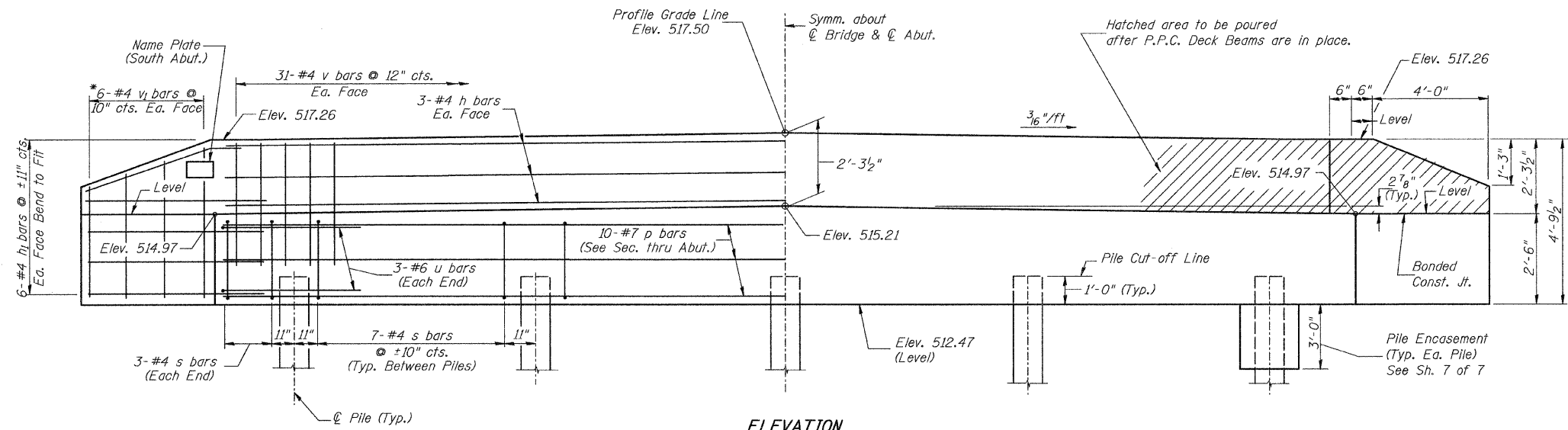


PLAN



SECTION THRU ABUT.



ELEVATION
(Front View of Abutment)

**TWO ABUTMENTS
BILL OF MATERIAL**

BAR	NO.	SIZE	LENGTH	SHAPE
h	12	#4	30'-9"	—
h ₁	48	#4	6'-6"	—
p	20	#7	30'-9"	—
s	68	#4	10'-5"	□
u	12	#6	11'-7"	□
v	124	#4	4'-0"	—
v ₁	24	#4	7'-9"	—
Concrete Structures			CU YD	25.4
Reinforcement Bars			POUND	2,850
Structure Excavation			CU YD	10
Name Plates			EACH	1
Furnishing Metal Shell			FOOT	340
Piles 12"x0.250"			FOOT	340
Driving Piles			FOOT	340
Test Pile Metal Shells			EACH	2
Concrete Encasement			CU YD	2.6

Ⓢ See Special Provisions

DESIGN STRESSES

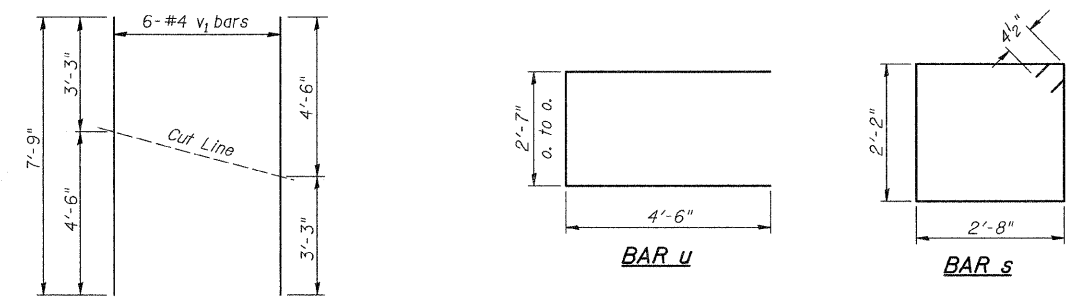
$f'_c = 3,500$ p.s.i.
 $f_y = 60,000$ p.s.i.

NOTES

- The Backwall and the portion of the Wingwalls above the bonded construction joint shall be cast against the in-place beam.
- Reinforcement bars shall conform to ASTM A706 Grade 60.

PILE DATA

Type & Size: Metal Shell 12"x0.250" walls
Nominal Required Bearing: 245 kips
Factored Resistance Available: 135 kips
Est. Length: 39' North Abutment
46' South Abutment
No. Req'd.: 10 (Includes 1 Test Pile at Each Abut.)



BAR CUTTING DIAGRAM
*Order v₁ bars full length. Cut as shown and use remainder of bars in opposite face.

**ABUTMENTS
MASON COUNTY**

SECTION 10-00016-02-BR
C.H. 5 OVER DUFF ARMSTRONG DITCH

SHEET NO. 6 7 SHEETS	ROUTE NO.	SECTION	COUNTY	TOTAL SHEETS	SHEET NO.
	CH 5	10-00016-02-BR	MASON	22	12
	S.N. 063-3029		CONTRACT NO. 93568		
FED. ROAD DIST. NO. 7 ILLINOIS		FED. AID PROJECT BRS-0572(305)			