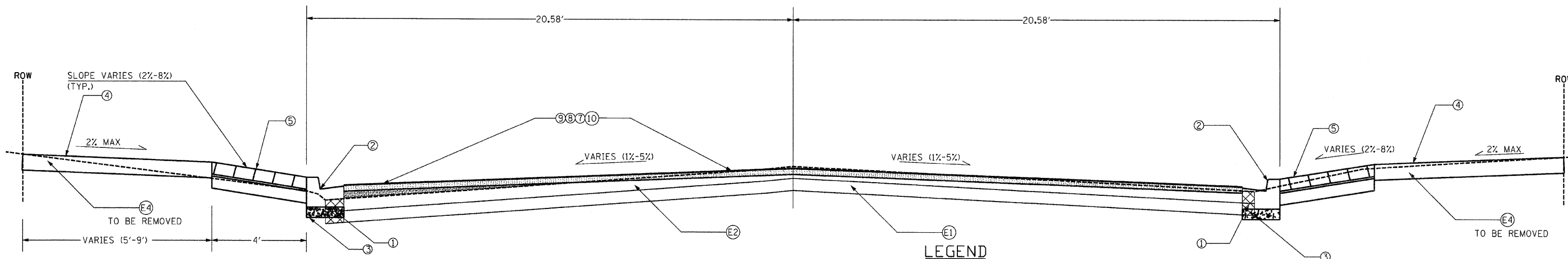


VERMONT STREET - 3RD TO 4TH STREET

STA. 22+12.17 TO STA. 24+43.86 (RT ONLY) (±500 SQ. YD.)

VERMONT STREET - 4TH TO 5TH STREET

STA. 24+81.91 TO STA. 29+76.93 (±2380 SQ. YD.)



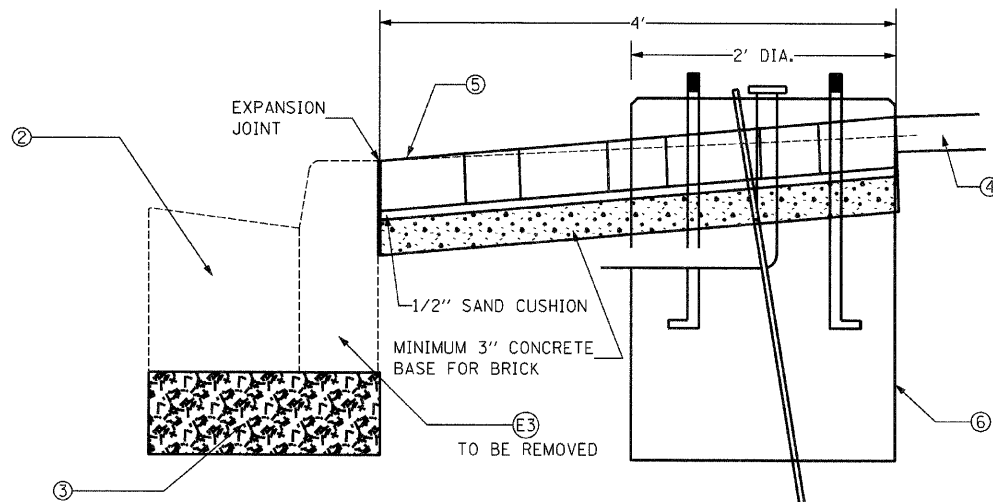
LEGEND

EXISTING

- (E1) EXISTING PAVEMENT (BRICK WITH +/- 3" ASPHALT)
- (E2) BITUMINOUS CONCRETE BINDER AND SURFACE COURSE, VARIABLE DEPTH (3 1/2" TYP, 2" MIN)
- (E3) TYPE B CURB
- (E4) PCC SIDEWALK - 4" AVE

PROPOSED

- (1) PAVEMENT REMOVAL, SPECIAL
- (2) CONCRETE CURB AND GUTTER, TYPE B-6.12
- (3) SUB-BASE GRANULAR MATERIAL TYPE B, 4"
- (4) PCC SIDEWALK, 4 INCH
- (5) 4 FOOT WIDE BRICK PAVER BAND
- (6) HISTORIC LIGHT FOUNDATION / CONCRETE FOUNDATION (SPECIAL)
- (7) POLYMERIZED HOT-MIX ASPHALT SURFACE COURSE, MIX "C", N50 1 1/2"
- (8) LEVELING BINDER (MACHINE METHOD), N50 3/4"
- (9) BITUMINOUS MATERIALS (PRIME COAT)
- (10) HOT-MIX ASPHALT SURFACE REMOVAL VARIABLE DEPTH



DETAIL B

TYPICAL BOTH SIDES OF THE STREET
SEE LIGHTING DETAILS

FILE NAME = D6XXXX-shs-10-Typical	USER NAME = MDL	DESIGNED - _____	REVISED - _____
		DRAWN - _____	REVISED - _____
		CHECKED - _____	REVISED - _____
		DATE - _____	REVISED - _____

STATE OF ILLINOIS
DEPARTMENT OF TRANSPORTATION

TYPICAL SECTIONS

SCALE: NTS SHEET NO. 1 OF 3 SHEETS STA. _____ TO STA. _____

F.A.P. RTE. 63	SECTION 09-00309-00-LS	COUNTY ADAMS	TOTAL SHEETS 39	SHEET NO. 10
CONTRACT NO. 93578				ILLINOIS FED. AID PROJECT