

NOTES:
 CONTRACTOR SHALL PROVIDE NECESSARY UTILITY LOCATE FOR ALL UNDERGROUND UTILITY SERVICES

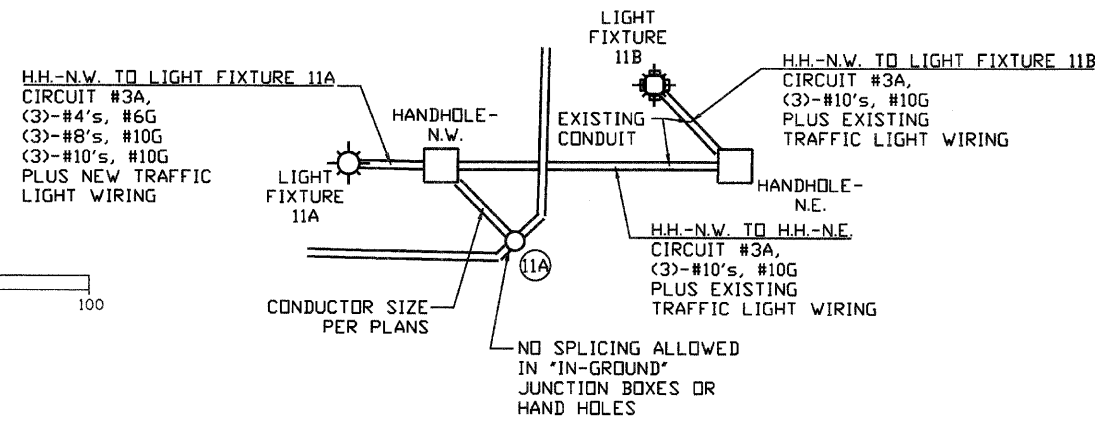
NO SPLICING ALLOWED IN GROUND JUNCTION BOXES OR HAND HOLES

SEE SCHEDULE FOR FIXTURE TYPE LOCATIONS.

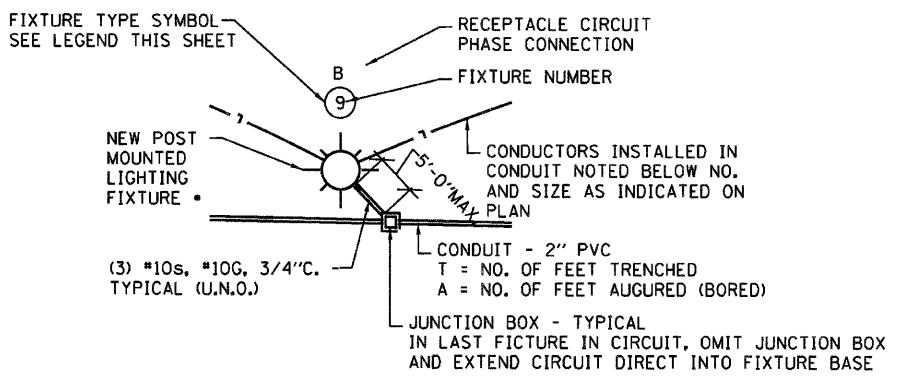
LIGHTING UNIT "A" - COMPLETE
 HOLOPHANE GRANVILLE SERIES LUMINAIRE WITH 150W., 240V., HIGH PRESSURE SODIUM LAMP EQUIPPED WITH A ONE PIECE PRISMATIC REFRACTOR WITH IES TYPE III DISTRIBUTION PATTERN AND S-67517 COLOR CORRECTED LAMP ON A 14' TALL HISTORIC STYLED POLE WITH A 120V. RECEPTACLE.

LIGHTING UNIT "B" - COMPLETE
 SAME AS UNIT "A" EXCEPT GLOBE SHALL INCLUDE LUNAR OPTIC LOUVERS.

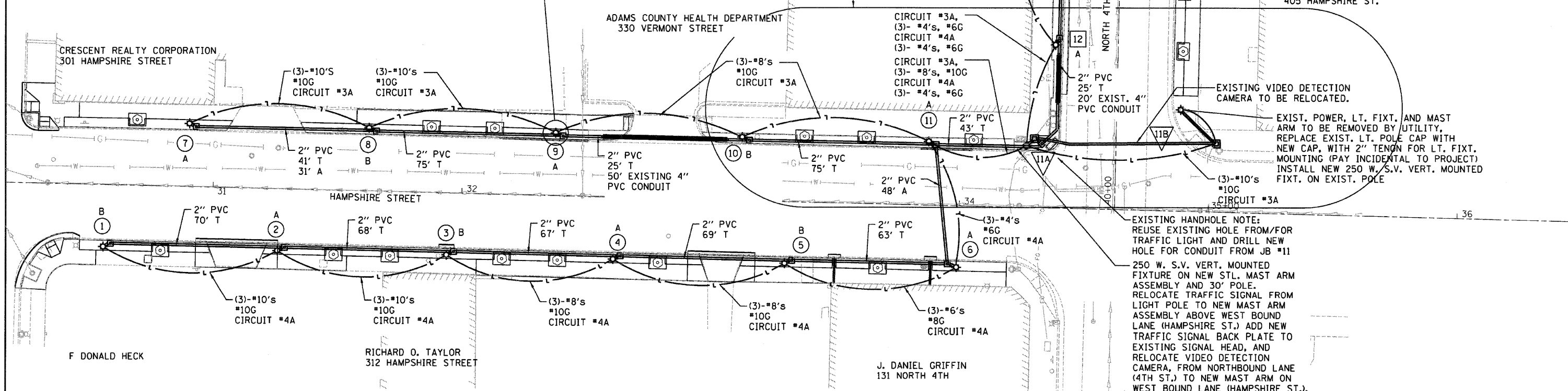
LUMINAIRE, SODIUM VAPOR, VERTICAL MOUNT, 250W.
 SINGLE HEAD SODIUM VAPOR LUMINAIRE WITH ADJUSTABLE THROW (DESIGNED FOR ZERO DEGREE TILT), FLAT GLASS, MULTI-MOUNT, MULTI-TAP BALLAST, WITH A 250W., 240V. LAMP WITH IES "FORWARD THROW" DISTRIBUTION PATTERN AND MOUNTED ON A 30' TALL POLE.



WIRING DETAIL @ 4TH & HAMPSHIRE
 NOT TO SCALE



TYPICAL CONSTRUCTION AT FIXTURE
 NOT TO SCALE



FILE NAME =	USER NAME = MDL
D6XXXX-sh2-28-Light	
PLOT SCALE = 1" = 40'	
PLOT DATE = #DATE#	

DESIGNED -	REVISED -
DRAWN -	REVISED -
CHECKED -	REVISED -
DATE -	REVISED -

STATE OF ILLINOIS
DEPARTMENT OF TRANSPORTATION

ROADWAY LIGHTING SHEETS

SCALE: 1" = 20' SHEET NO. 1 OF 3 SHEETS STA. _____ TO STA. _____

F.A.P. RTE.	SECTION	COUNTY	TOTAL SHEETS	SHEET NO.
63	09-00309-00-LS	ADAMS	39	28
CONTRACT NO. 93578				
ILLINOIS FED. AID PROJECT				