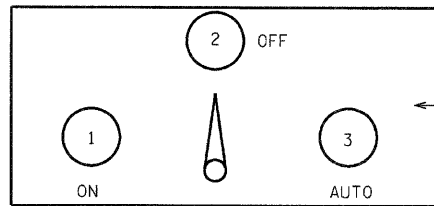


NOTES:

LIGHTING CONTROLLER SHALL BE NEMA TYPE 4 5052-H32 ALUMINUM ALLOY WEATHER PROOF BOX WITH CCL (CORBIN) #R357SGS LOCK WITH KEYHOLE COVER OR EQUIVALENT AND NATURAL ALUMINUM FINISH, PER FED. SPEC. 00A-250/8.

LIGHTING CONTROLLER SHALL HAVE NOMINAL INSIDE DIMENSIONS OF MIN. 40" X 17" X 15". CABINET AND MATERIALS SHALL COMPLY WITH SECTION 800 OF THE STANDARD SPECIFICATIONS FOR ROAD AND BRIDGE CONSTRUCTION.

LIGHTING CONTROLLER SHALL BE:
ERPEL DESIGN CORPORATION
MODEL #SSD261715 SINGLE DOOR CABINET
OR APPROVED EQUAL



SELECTOR SWITCH SHALL HAVE MARKED POSITIONS WITH METAL OR ENGRAVED PLASTIC NAME PLATE AS SHOWN.

SELECTOR SWITCH PANEL

LIGHTING CONTROLLER

120/240V, 1-PH, 3-WIRE

LOCATION:
IN ALLEY BETWEEN 4TH AND 5TH STREETS
SEE LIGHTING PLAN, SHEET #30

DEVICES:

- A - MAIN BREAKER, 200A, 2-P
- B - CONTROL SYSTEM BREAKER, 15A, 1-P
- C - SURGE PROTECTOR
- D - SELECTOR SWITCH, 3 POSITION
- E - PHOTOCELL
- F - RELAY - UNIT MOUNT, SINGLE POLE DOUBLE THROW, MIN. 10A CONTACT RATING, 120V CONTROL COIL.
- G - CONTACTOR - 200A, 240V, 2-P
- H - BOLT-ON BRANCH BREAKERS, MOUNTED ON 225A, MAIN LUG ONLY, MIN. (20) CIRCUIT, PANELBOARD INTERIOR
- J - METER, TO BE RELOCATED BY CONTRACTOR AND CONNECTED BY UTILITY COMPANY

AREA 'A'

- 1 - 2 POLE, 25 AMP BREAKER - CIRCUIT #1A
- 2 - 2 POLE, 35 AMP BREAKER - CIRCUIT #2A
- 3 - 2 POLE, 25 AMP BREAKER - CIRCUIT #3A
- 4 - 2 POLE, 25 AMP BREAKER - CIRCUIT #4A

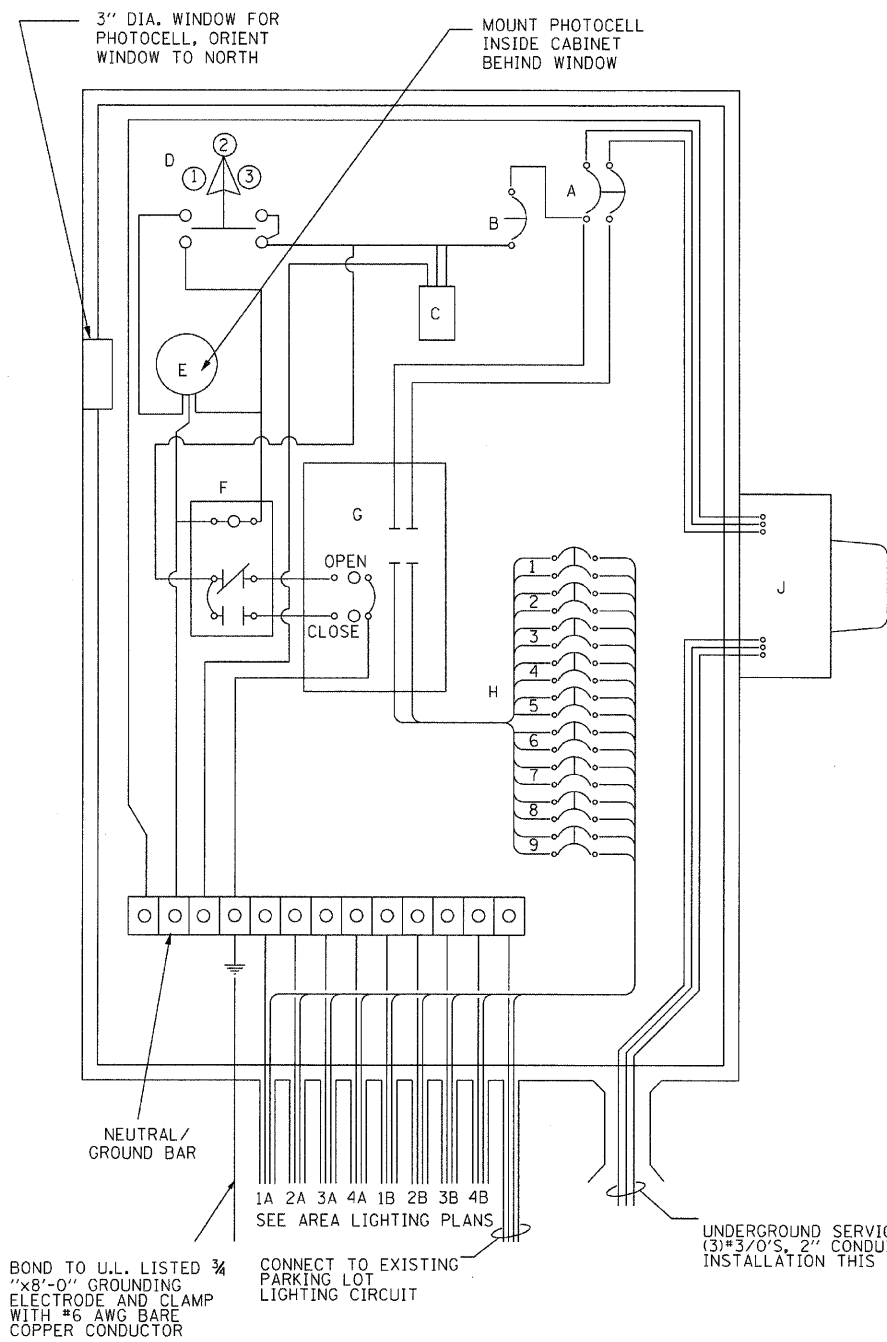
AREA 'B'

- 1 - 2 POLE, 25 AMP BREAKER - CIRCUIT #1B
- 2 - 2 POLE, 20 AMP BREAKER - CIRCUIT #2B
- 3 - 2 POLE, 35 AMP BREAKER - CIRCUIT #3B
- 4 - 2 POLE, 25 AMP BREAKER - CIRCUIT #4B

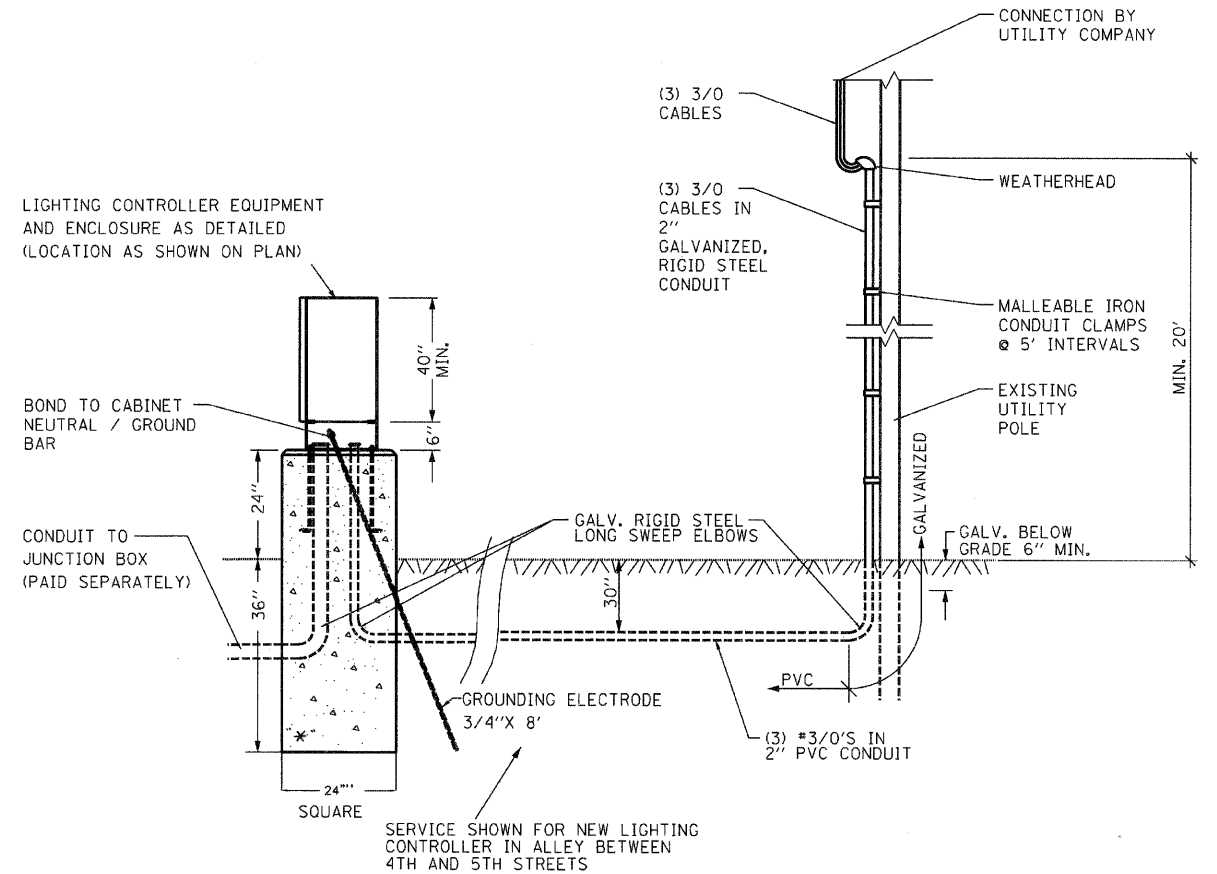
EXISTING PARKING LOT LIGHTING

- 9 - 2 POLE, 30 AMP BREAKER - EXISTING PARKING LOT LIGHTING CIRCUIT

ALL BREAKERS SHALL HAVE MINIMUM INTERRUPTING RATINGS, 22KAIC



LIGHTING CONTROLLER DETAIL



**ELECTRIC SERVICE INSTALLATION 120/240V,
1-PH POWER SOURCE AREAS "A" & "B"**

NOT TO SCALE

* CONCRETE FOUNDATION TO BE PAID AS "Type D" (5 FOOT)

FILE NAME = D6XXXX-sh-37-Details	USER NAME = MDL	DESIGNED - _____	REVISED - _____
	PLOT SCALE = NTS	DRAWN - _____	REVISED - _____
	PLOT DATE = #DATE#	CHECKED - _____	REVISED - _____
		DATE - _____	REVISED - _____

STATE OF ILLINOIS
DEPARTMENT OF TRANSPORTATION

DETAILS

SCALE: NTS SHEET NO. 4 OF 7 SHEETS

F.A.P. RTE.	SECTION	COUNTY	TOTAL SHEETS	SHEET NO.
63	09-00309-00-LS	ADAMS	39	37
CONTRACT NO. 93578				
ILLINOIS FED. AID PROJECT				