

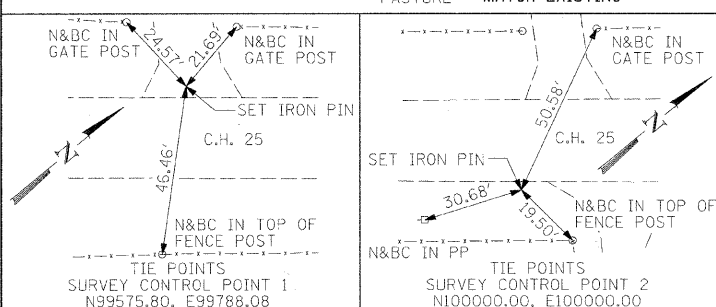
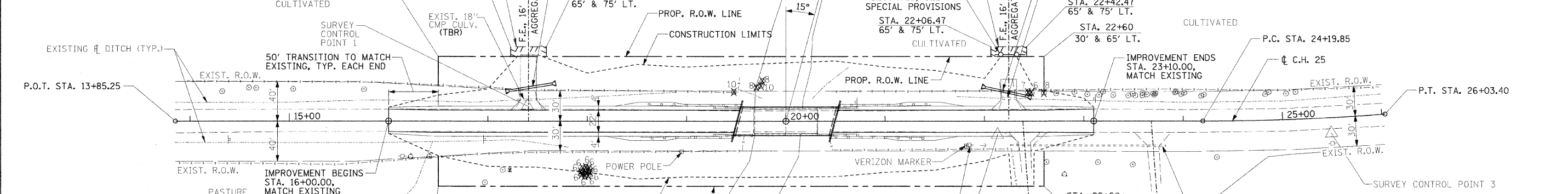
BENCHMARK:

SPIKE NAIL FOUND IN POWER POLE
 STA. 21+84, 24' RT.
 ELEV. 652.81

EXISTING STRUCTURE NO. 058-3000

TWO SPAN CONCRETE DECK AND WF BEAM SUPERSTRUCTURE
 ON CLOSED TIMBER ABUTMENTS WITH TIMBER WINGWALLS
 AND TIMBER PIER.
 O. TO O. DECK = 25'-2"
 BK. TO BK. ABUTMENTS = 64'-6"

TERRY L. HEINZ



NOTES:
 1. SEE HORIZONTAL LAYOUT (SHEET 4 OF 19)
 FOR CONTROL POINT, PROPOSED R.O.W., AND
 PROPOSED CENTERLINE INFORMATION.

TERRY L. HEINZ

