

STATE OF ILLINOIS
DEPARTMENT OF TRANSPORTATION
DIVISION OF HIGHWAYS
PLANS FOR PROPOSED
FEDERAL-AID HIGHWAY BRIDGE PROGRAM
CRAWFORD COUNTY
SECTION 11-00096-00-BR
STRUCTURE NO. 017-3061
PROJECT NO. BRS-0698(103)
JOB NO. C-97-087-12
FAS 698 (CH 3)

INDEX OF SHEETS

1	COVER SHEET
2	PLAN & PROFILE
3-4	CROSS SECTIONS
5-14	BRIDGE PLANS
15-16	BORINGS

STANDARDS:
(SEE PROPOSAL)

280001-06	- EROSION CONTROL
515001-03	- NAME PLATES
630301-05	- SHOULDER WIDENING TYPE 1 TERMINALS
631032-07	- TRAFFIC BARR. TERM. TYPE 6A
635006-03	- REFLECTOR AND TERM. MARKER PLACEMENT
701901-02	- TRAFFIC
BLR 21-9	- TRAFFIC
BLR 22-7	- TRAFFIC

SUMMARY OF QUANTITIES

0.3	ACRE	SEEDING, CLASS 2 (SPECIAL)	X2501000
1	L SUM	TRAFFIC CONTROL AND PROTECTION, (SPECIAL)	X7010216
4	CU YD	EARTH EXCAVATION	20200100
100	CU YD	CHANNEL EXCAVATION	20300100
172	CU YD	FURNISHED EXCAVATION	20400800
96	TON	POROUS GRANULAR EMBANKMENT	20700110
60	FOOT	PERIMETER EROSION BARRIER	28000400
630	TON	STONE DUMPED RIPRAP, CLASS A5	28100809
54	GALLON	BITUMINOUS MATERIALS (PRIME COAT)	40600100
55	TON	HOT-MIX ASPHALT SURFACE COURSE, MIX "C", N70	40600315
19	TON	LEVELING BINDER (MACHINE METHOD), N70	40600635
102	SQ YD	PORTLAND CEMENT CONCRETE PAVEMENT 8"	42000300
161	SQ YD	PAVEMENT REMOVAL	44000100
1	EACH	REMOVAL OF EXISTING STRUCTURES	50100100
75	CU YD	COFFERDAM EXCAVATION	50200300
1	EACH	COFFERDAM (TYPE 2) (LOCATION-1)	50201121
1	EACH	COFFERDAM (TYPE 2) (LOCATION-2)	50201122
139.1	CU YD	CONCRETE STRUCTURES	50300225
3.4	CU YD	CONCRETE ENCASEMENT	50300280
3150	SQ FT	PRECAST PRESTRESSED CONCRETE DECK BEAMS (17" DEPTH)	50400305
10,300	POUND	REINFORCEMENT BARS	50800105
213	FOOT	STEEL RAILING, TYPE SM	50901050*
1145	FOOT	FURNISHING STEEL PILES HP12X53	51201600
1145	FOOT	DRIVING PILES	51202305
2	EACH	TEST PILE STEEL HP12X53	51203600
1	EACH	NAME PLATES	51500100
4	EACH	TRAFFIC BARRIER TERMINAL, TYPE 6A	63100087*
4	EACH	TRAFFIC BARRIER TERMINAL, TYPE 1 (SPECIAL) TANGENT	63100167*
1	L SUM	MOBILIZATION	67100100
4	EACH	TERMINAL MARKER - DIRECT APPLIED	78201000*

*SPECIALTY ITEM

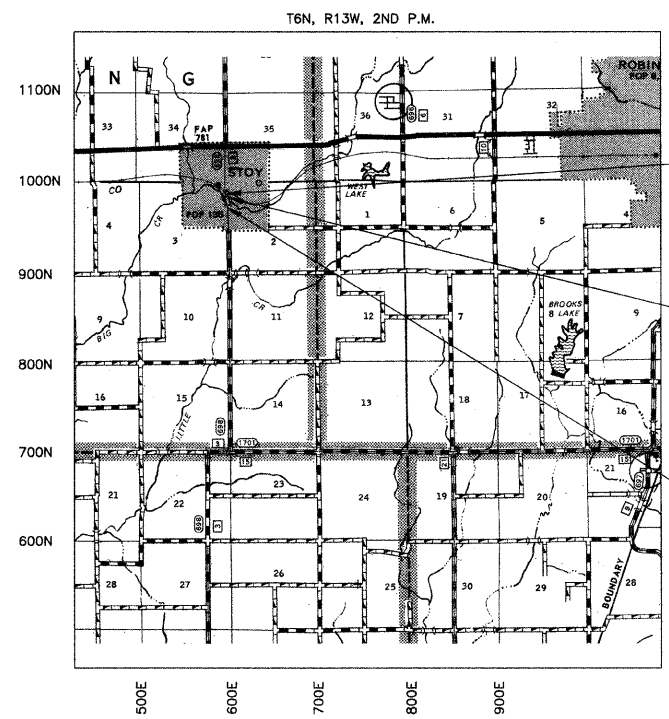
FUNCTIONAL CLASS: RURAL MAJOR COLLECTOR
ADT = 1500
DESIGN SPEED = 50 MPH

TOLL FREE JOINT UTILITY LOCATING
INFORMATION FOR EXCAVATORS (J.U.L.I.E.)
TELEPHONE NO. 1-800-892-0123

PROFESSIONAL DESIGN FIRM #184-000832

SCALES

PLAN	1 INCH = 50 FEET
PROFILE HORZ.	1 INCH = 50 FEET
PROFILE VERT.	1 INCH = 10 FEET
X-SECTIONS	1 INCH = 5 FEET



LOCATION MAP
APPROXIMATE SCALE: 1 INCH = 1 MILE
NET LENGTH = 221 FT. = 0.042 MILES

SECTION 11-00096-00-BR
ENDS STA. 299+65

STA. 298+54 - SPECIAL BRIDGE DESIGN
PROPOSED PRECAST PRESTRESSED CONC.
DECK BEAM BRIDGE, 3 SPANS @ 35' EACH
30' RDWY, SKEW= 25° L.F.
PROPOSED STR. NO. 017-3061
EXISTING STR. NO. 017-3010

SECTION 11-00096-00-BR
BEGINS STA. 297+44



John A. Stone
04/05/2012
ILLINOIS REGISTERED PROFESSIONAL ENGINEER # 55012
LICENSE EXPIRES NOVEMBER 30, 2013

ILLINOIS DEPARTMENT OF TRANSPORTATION	
APPROVED: April 5, 2012	<i>Justin R. Child</i> CRAWFORD COUNTY ENGINEER
PASSED: April 20, 2012	<i>Maureen Koehl</i> DISTRICT SEVEN ENGINEER OF LOCAL ROADS & STREETS
RELEASING FOR BID BASED ON LIMITED REVIEW: 4-20, 2012	<i>Roger L. Driskell</i> DEPUTY DIRECTOR OF HIGHWAYS, REGION FOUR ENGINEER