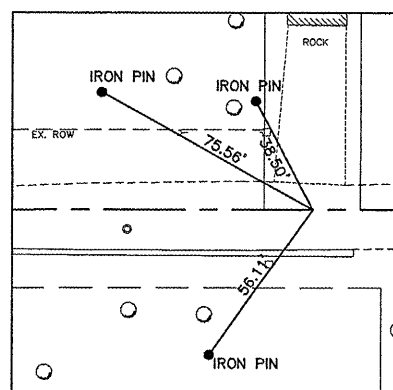
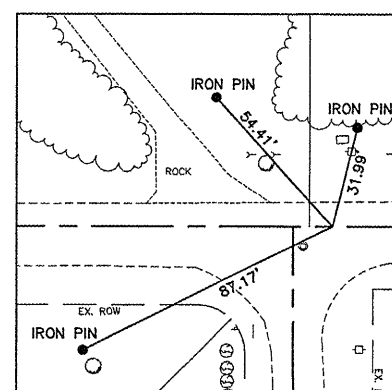


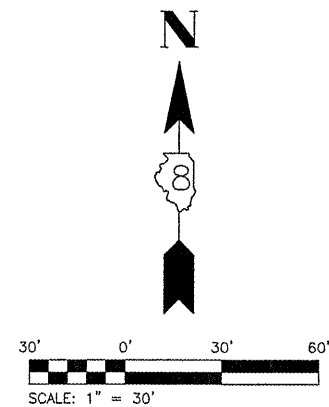
TBM "C"
 IRON PIN S.E. CORNER
 E. FAIRGROUNDS AVE. AND
 OAKWOOD ST. AT
 STA. 25+98.50 84.76' RT. ELEV. 610.66



POL STA. 27+00
 N: 4922.7488
 E: 6285.9401



POL STA. 33+50
 N: 4922.9748
 E: 6935.9401



FILE NAME = 00140-321
 USER NAME = Hargan, Chris
 PLOT SCALE = 1:2
 PLOT DATE = 3/9/2012

DESIGNED - CSH	REVISED -
DRAWN - CSH	REVISED -
CHECKED - DLK	REVISED -
DATE - 3/9/12	REVISED -

STATE OF ILLINOIS
 DEPARTMENT OF TRANSPORTATION

REFERENCE TIES & BENCHMARKS

SCALE: 1:30 SHEET NO. 17 OF 117 SHEETS STA. 20+00 TO STA. 34+50

F.A.U. RTE.	SECTION	COUNTY	TOTAL SHEETS	SHEET NO.
8801	05-00034-01-RP	JERSEY	117	17
FED. ROAD DIST. NO. 8 ILLINOIS			CONTRACT NO. 97371	