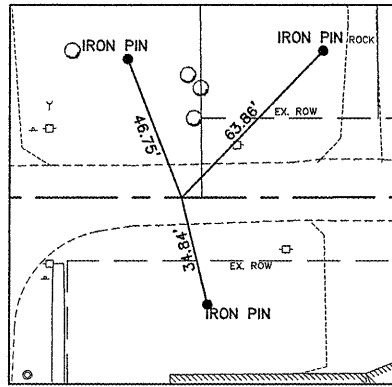
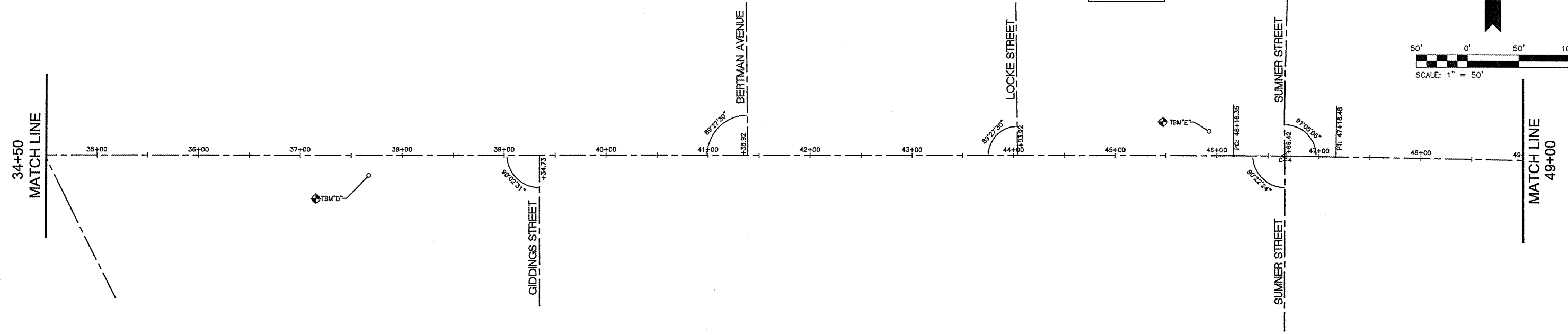
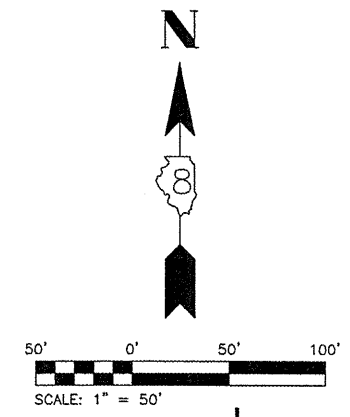
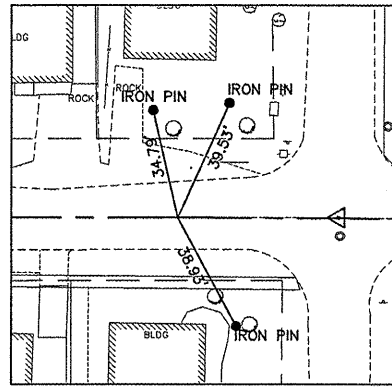


IBM "D" PIPE
 SOUTH SIDE E. FAIRGROUNDS AT
 STA. 37+67.21 20.18' RT. ELEV. 615.27
 IBM "E" PIPE
 NORTH SIDE E. FAIRGROUNDS AT
 STA. 45+92.43 24.17 LT. ELEV. 619.49

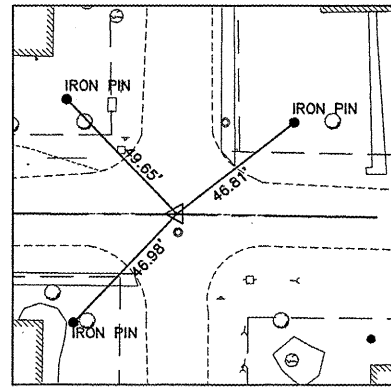
C-4
 PI STA. = 46+66.41
 $\Delta = 01'05" 11" (RT)$
 $R = 5280.00'$
 $T = 50.06'$
 $L = 100.12'$
 $E = NA$
 $s = NA$
 $T.R. = NA$
 $S.E. RUN = NA$
 $P.C. STA = 46+16.35$
 $P.T. STA = 47+16.48$



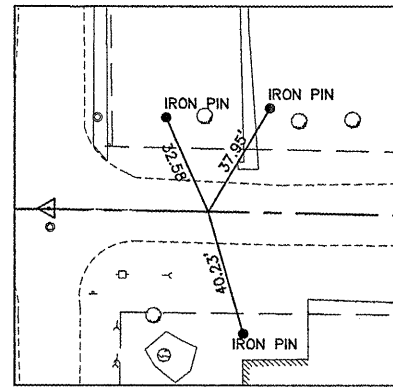
POL STA. 40+00
 N: 4923.2008
 E: 7585.9401



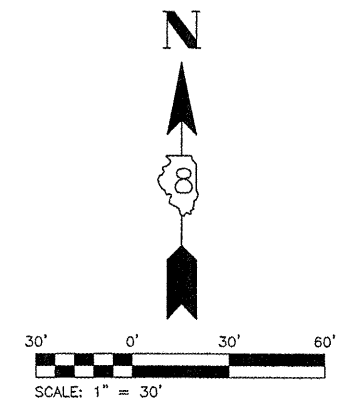
PC STA. 46+16.35
 N: 4923.4151
 E: 8202.2946



PI STA. 46+66.41
 N: 4923.4325
 E: 8252.3585



PT STA. 47+16.35
 N: 4922.5006
 E: 8302.4138



FILE NAME = 00140-321	USER NAME = Hargan, Chris	DESIGNED - CSH	REVISED -
	PLOT SCALE = 1:2	DRAWN - CSH	REVISED -
	PLOT DATE = 3/9/2012	CHECKED - DLK	REVISED -
		DATE - 3/9/12	REVISED -

STATE OF ILLINOIS
DEPARTMENT OF TRANSPORTATION

REFERENCE TIES & BENCHMARKS

SCALE: 1:30 SHEET NO.18 OF 117 SHEETS STA. 34+50 TO STA. 49+00

F.A.U. RTE.	SECTION	COUNTY	TOTAL SHEETS	SHEET NO.
8801	05-00034-01-RP	JERSEY	117	18
CONTRACT NO. 97371				
FED. ROAD DIST. NO. 8 ILLINOIS				