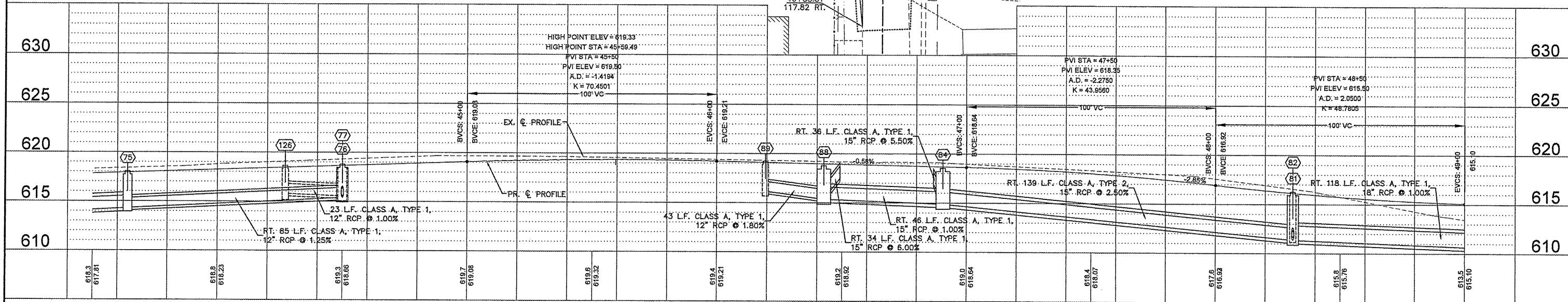
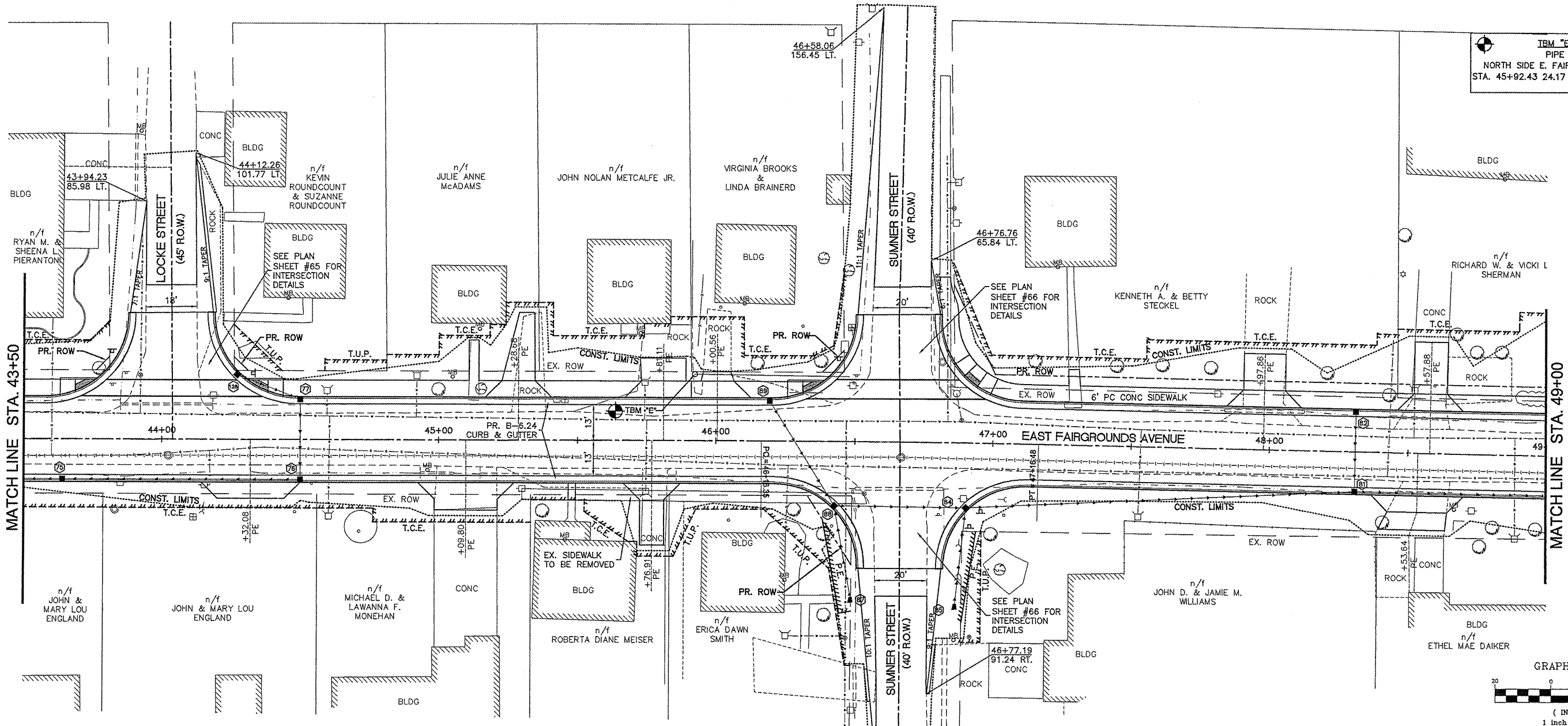


IBM "E"  
PIPE  
NORTH SIDE E. FAIRGROUNDS AT  
STA. 45+92.43 24.17 LT. ELEV. 619.49



FILE NAME = 00140-321	USER NAME = Horgan, Chris	DESIGNED - CSH	REVISED -	STATE OF ILLINOIS DEPARTMENT OF TRANSPORTATION	ROADWAY PLAN AND PROFILE	F.A.U. R.T.E. = 8801	SECTION = 05-00034-01-RP	COUNTY = JERSEY	TOTAL SHEETS = 117	SHEET NO. = 28
PLOT SCALE = 1:2	DRAWN - CSH	REVISED -	SCALE: 1:20			SHEET NO. 28 OF 117 SHEETS	STA. 43+50 TO STA. 49+00	CONTRACT NO. 97371		
PLOT DATE = 4/2/2012	CHECKED - DLK	REVISED -	FED. ROAD DIST. NO. 8 ILLINOIS (FED. AID PROJECT)							
DATE = 3/28/12	REVISOR -	REVISED -								