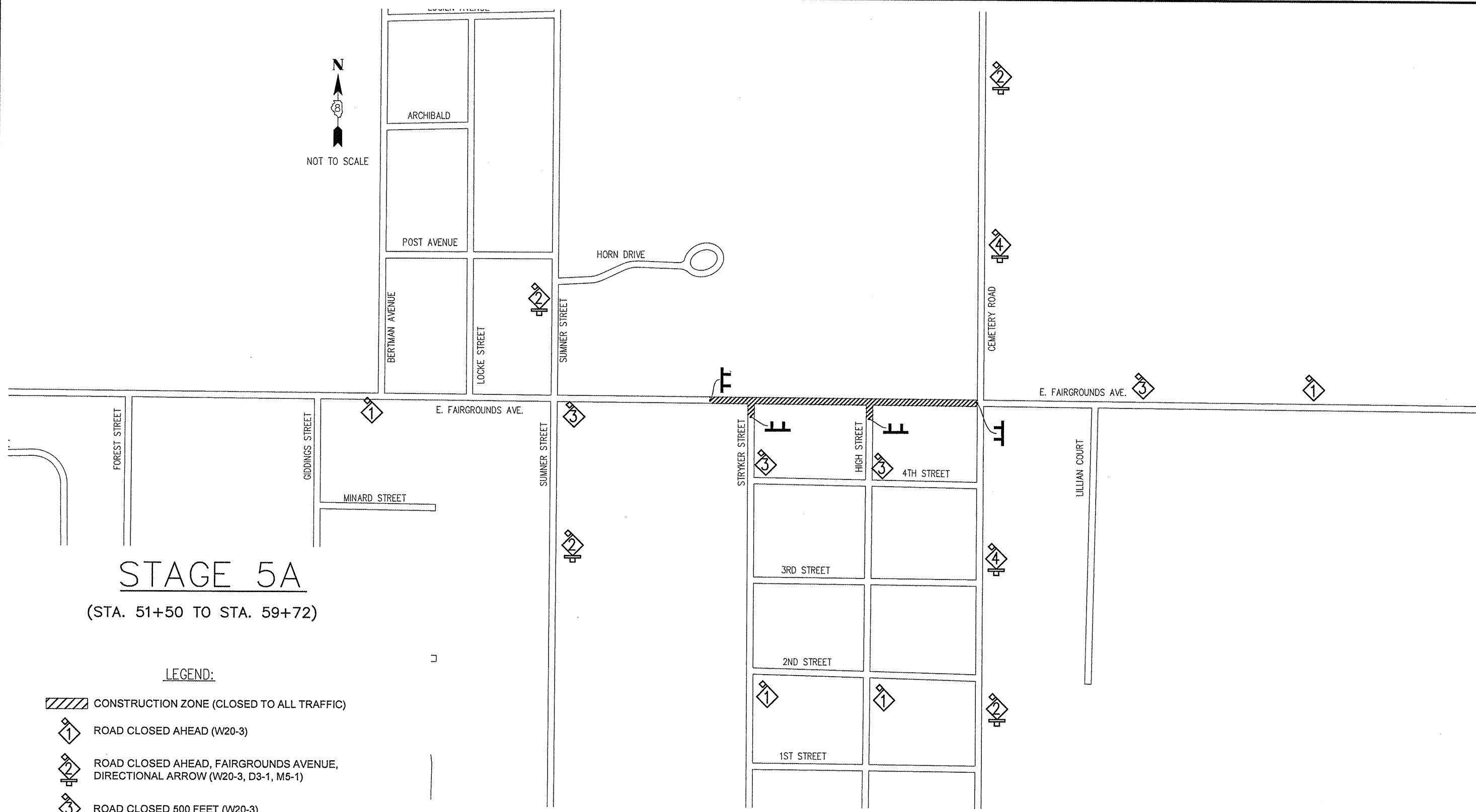


NOT TO SCALE



STAGE 5A

(STA. 51+50 TO STA. 59+72)

LEGEND:

CONSTRUCTION ZONE (CLOSED TO ALL TRAFFIC)

ROAD CLOSED AHEAD (W20-3)

ROAD CLOSED AHEAD, FAIRGROUNDS AVENUE, DIRECTIONAL ARROW (W20-3, D3-1, M5-1)

ROAD CLOSED 500 FEET (W20-3)

ROAD CLOSED 500 FEET, FAIRGROUNDS AVENUE, DIRECTIONAL ARROW (W20-3, D3-1, M5-1)

TYPE III BARRICADE W/FLASHING LIGHT AND ROAD CLOSED (R11-2)

DRUM OR TYPE I BARRICADE

NOTES:

- ILLUSTRATION NOT TO SCALE.
- ALL TRAFFIC CONTROL SIGNS/DEVICES SHALL CONFORM TO AND BE PLACED/IMPLEMENTED IN ACCORDANCE WITH THE CURRENT EDITION OF THE MANUAL ON UNIFORM TRAFFIC CONTROL DEVICES IN EFFECT ON THE DATE OF THE INVITATION FOR BIDS.
- INTENDED CONSTRUCTION SEQUENCE
 A-STORM SEWERS.
 B-PAVING TO STATION 52+10
 C-RIP RAP AND CHANNEL WORK.
 D-PAVEMENT MARKING AND SEEDING OPTIONAL.
 E-SEAL COAT OPTIONAL.

FILE NAME = 00140-321	USER NAME = Horgan, Chris	DESIGNED -- BJB	REVISED --
		DRAWN -- MSF	REVISED --
	PLOT SCALE = 1:2	CHECKED -- DLK	REVISED --
	PLOT DATE = 3/10/2012	DATE -- 3/9/12	REVISED --

STATE OF ILLINOIS
DEPARTMENT OF TRANSPORTATION

STAGE CONSTRUCTION/TRAFFIC CONTROL

SCALE: N/A SHEET NO. 38 OF 117 SHEETS STA. NA TO STA. NA

F.A.U. RTE.	SECTION	COUNTY	TOTAL SHEETS	SHEET NO.
8801	05-00034-01-RP	JERSEY	117	38
FED. ROAD DIST. NO. 8 ILLINOIS			FED. AID PROJECT	
			CONTRACT NO. 97371	