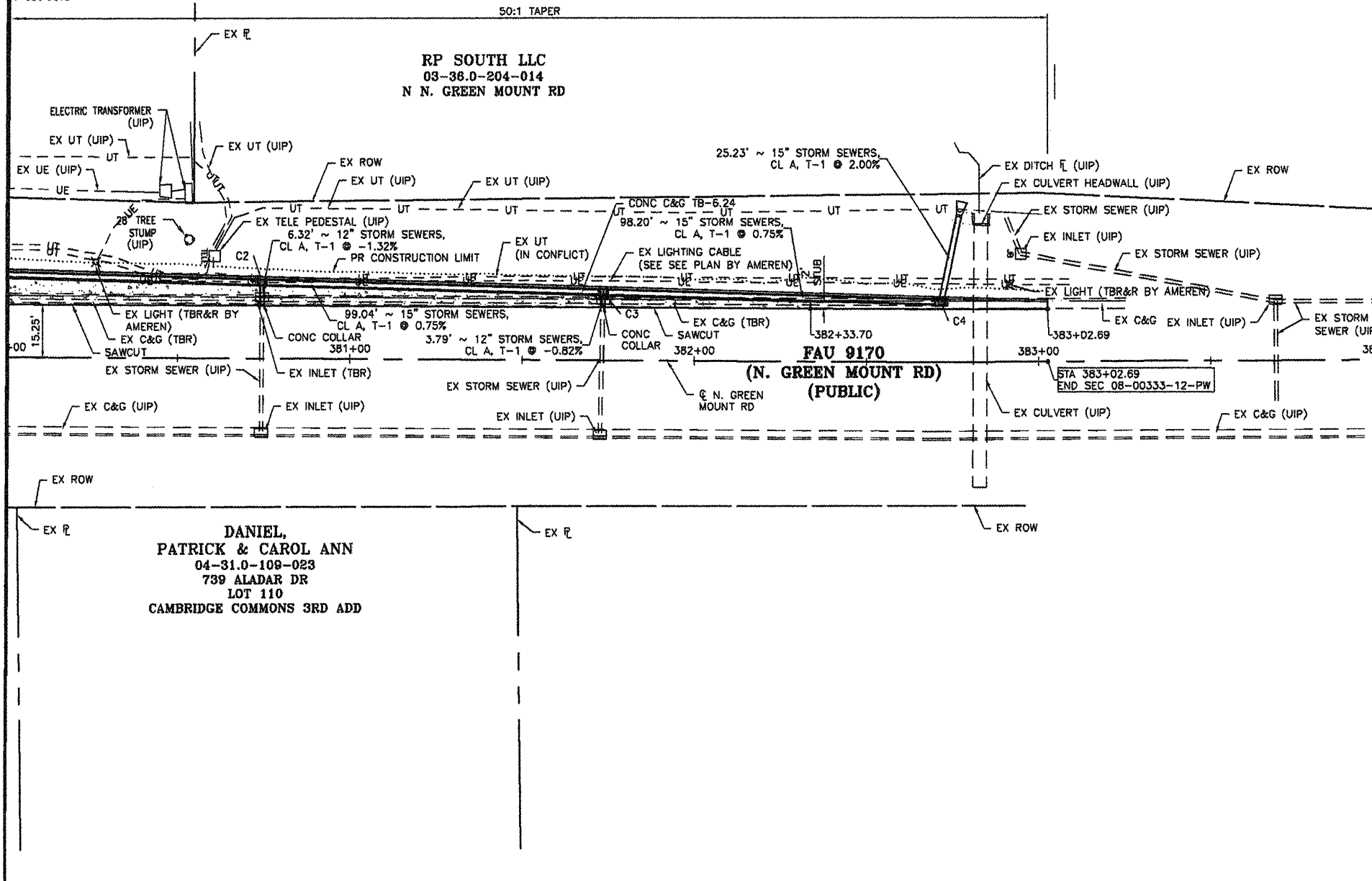
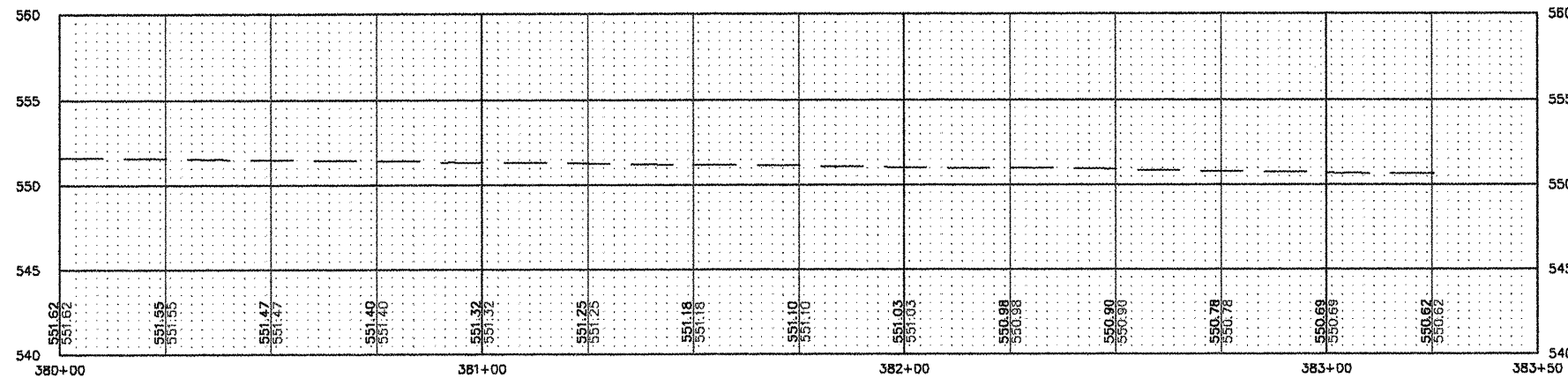


NTRE, LLC
03
MOUNT RD
N MOUNT

MATCHLINE 380+00



- PROPOSED LEGEND**
- (TBR) - TO BE REMOVED
 - (UIP) - USE IN PLACE
 - CONC - CONCRETE
 - TEMP - TEMPORARY
 - PAVT - PAVEMENT
 - PR - PROPOSED
 - EX - EXISTING
 - [Pattern] - PR PCC
 - [Pattern] - PR HMA SHOULDERS
 - [Dashed] - PR CONSTRUCTION LIMIT
 - [Symbol] - PR GUARDRAIL



| F.A.U. RTE. | SECTION | COUNTY |
|-------------|--------------------|-----------|
| 9170 | 08-00333-12-PW | ST. CLAIR |
| ILLINOIS | CONTRACT NO. 97492 | |

SHEET NO.
17 OF 55

Job No. 088-09
Scale: 1"=20'
Drawn by: BEC
Design by: BEC
Approved by: CMB
File Name: Shiloh Plans

ISSUE RECORD

| DATE | DESCRIPTION |
|--------------|-------------|
| PS&E 4/20/12 | |

Corporate Engineering Certificate # 000381

Civil Engineer
4/2012

CBB Crawford, Bunte, Brammeier
Traffic and Transportation Engineers
St. Louis, Missouri/Glen Carbon, Illinois
314-878-6644 618-656-2612
Fax: 314-878-5876 E-Mail: cbb@cbbtraffic.com

PLAN/PROFILE SHEETS
N. GREEN MOUNT ROAD & I-64
E.B. RAMP, W.B. RAMP &
REGENCY PARK/PIERCE BLVD
SHILOH, ILLINOIS