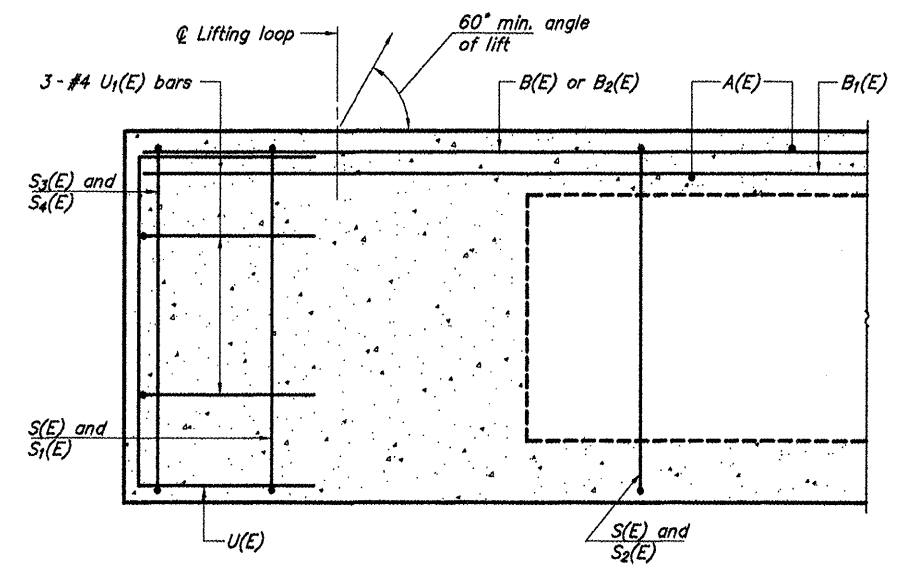
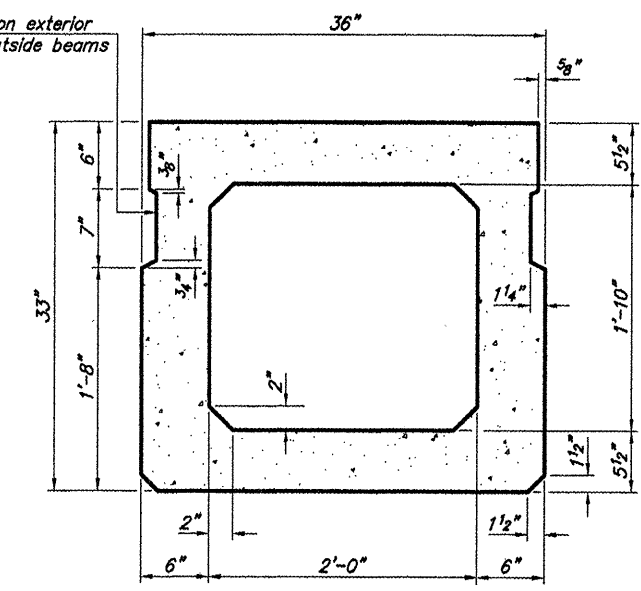


ROUTE	SECTION	COUNTY	TOTAL SHEETS	SHEET NO
TR 209	09-01194-00-BR	UNION	12	4
PROJECT NO. BROS-181(50)			CONTRACT NO. 99466	

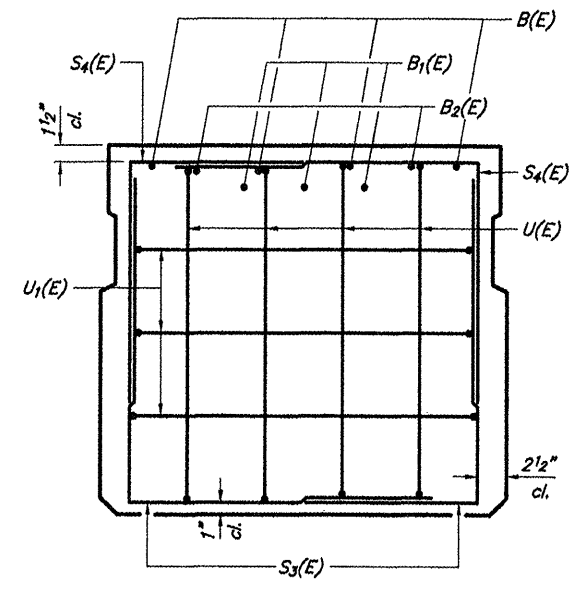


**SECTION C-C**

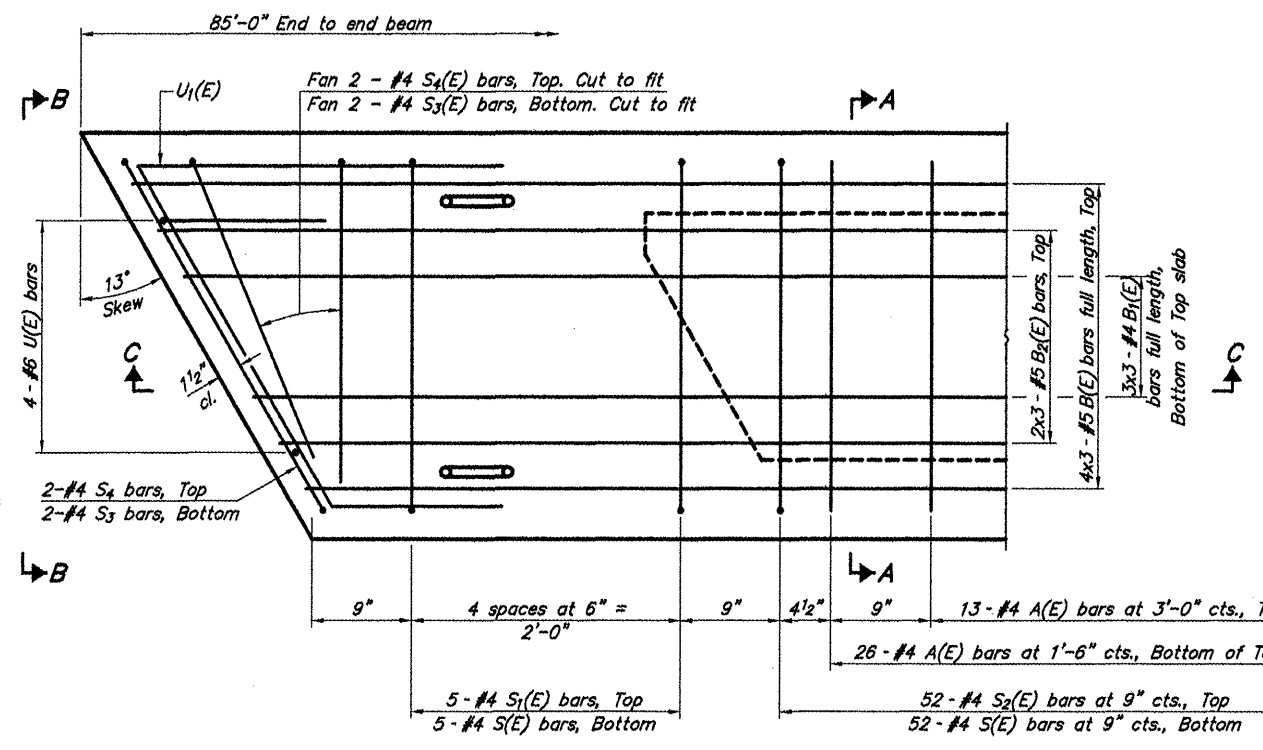
Omit key on exterior face of outside beams



**SECTION A-A**  
(Showing dimensions)

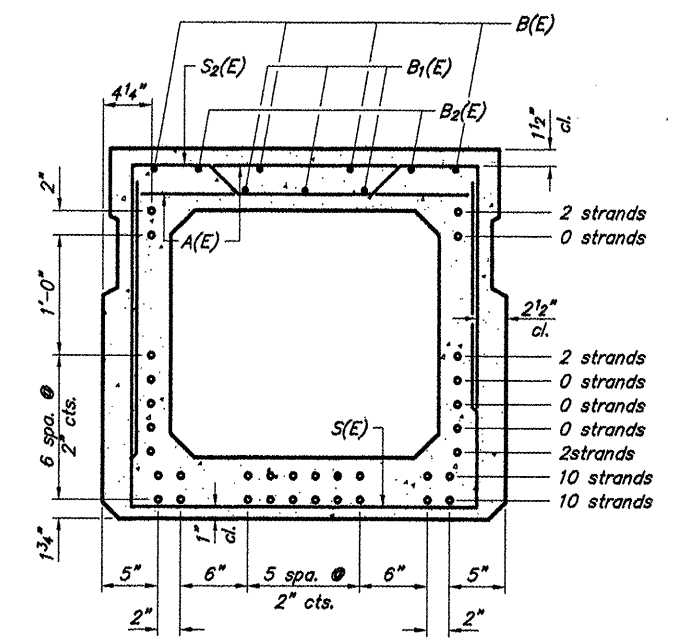


**VIEW B-B**



**PLAN VIEW**

Note: Spacing of S(E) and S2(E) bars may be adjusted up to 4" in the immediate area of the transverse tie diaphragms to miss the block outs for the transverse ties.



**SECTION A-A**  
(Showing reinforcement and permissible strand locations)

Note: Place the number of strands specified in each row symmetrically about the centerline of beam in the permissible strand locations shown.

**BAR LIST**  
**ONE BEAM ONLY**  
(For information only)

Bar	No.	Size	Length	Shape
A(E)	78	#4	2'-7"	—
B(E)	12	#5	29'-8"	—
B1(E)	9	#4	29'-4"	—
B2(E)	6	#5	29'-8"	—
S(E)	114	#4	7'-5"	—
S1(E)	10	#4	6'-3"	—
S2(E)	104	#4	6'-6"	—
S3(E)	8	#4	4'-7"	—
S4(E)	8	#4	4'-0"	—
U(E)	8	#6	5'-0"	—
U1(E)	6	#4	5'-8"	—

Bar Laps #4 bars = 1'-8"  
#5 bars = 2'-2"

**33" X 36" PPC DECK BEAM**  
**TOWNSHIP ROUTE 209 (AIRPORT ROAD)**  
**DUTCH CREEK**  
**SECTION 09-01194-00-BR**  
**UNION COUNTY**  
**STRUCTURE NO. 091-3235**