

STATE OF ILLINOIS
DEPARTMENT OF TRANSPORTATION
DIVISION OF HIGHWAYS
PLANS FOR PROPOSED
FEDERAL - AID URBAN PROJECT
CITY OF ANNA
F.A.U. ROUTE 9910
SECTION 10-00050-00-RS
UNION COUNTY
JOB NO. C99-542-10
PROJECT NO. M-5080(006)
CONTRACT NO. 99470
IMPROVEMENTS TO EAST DAVIE STREET

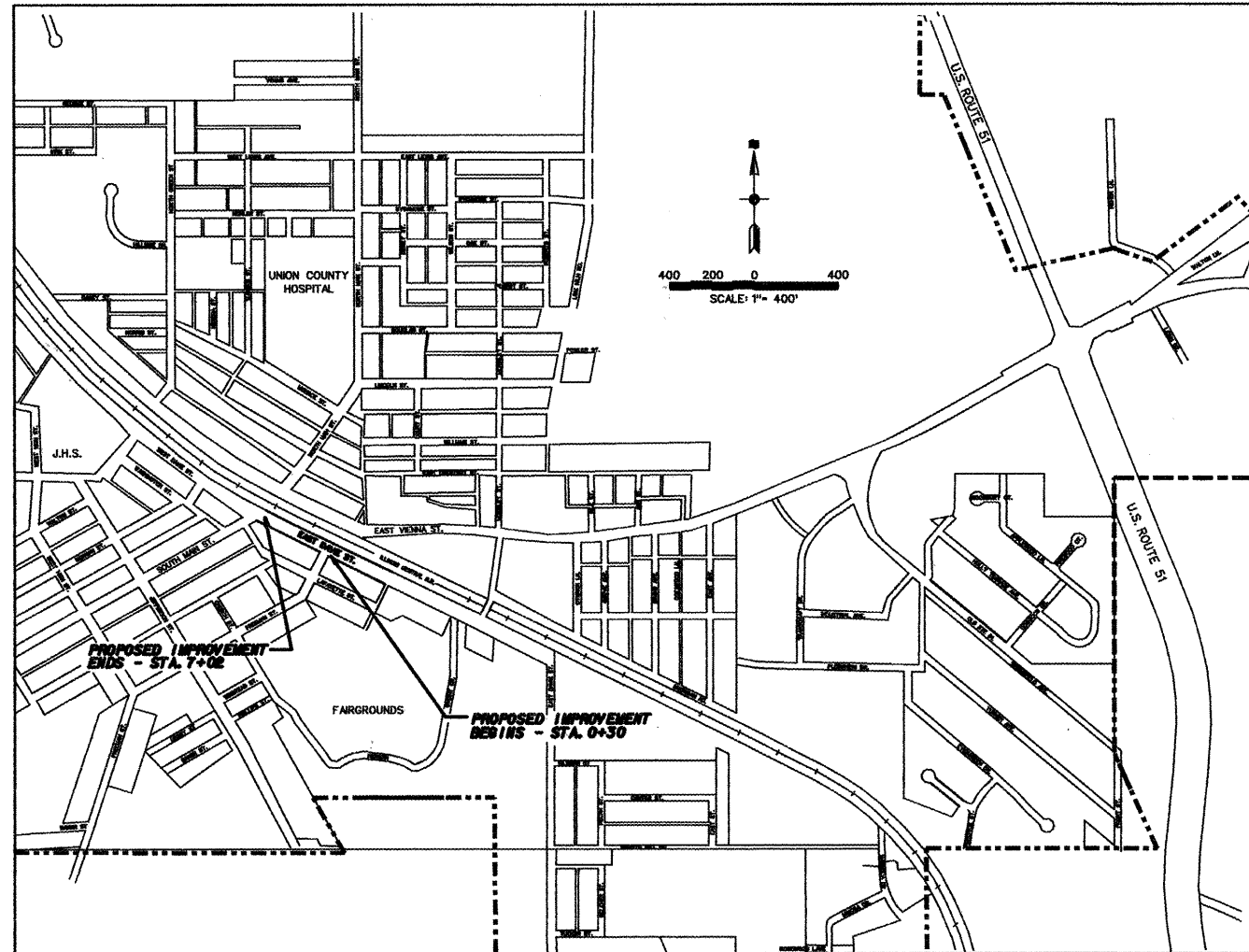
F.A.U. ROUTE	SECTION	COUNTY	TOTAL SHEETS	SHEET NUMBER
9910	10-00050-00-RS	UNION	16	1
CITY OF ANNA		PROJECT NO. M-5080(006)		
CONTRACT NO. 99470		JOB NO. C99-542-10		

INDEX OF SHEETS

SHEET NO	DESCRIPTION
1	TITLE AND COVER SHEET INDEX OF SHEETS, LOCATION MAP
2	TYPICAL SECTIONS, SUMMARY OF QUANTITIES
3	DETAILS - STORM WATER
4	CONSTRUCTION LAYOUT AND STORM SEWER PLAN
5	REMOVAL PLAN - INTERSECTION DETAIL
6	PLAN AND PROFILE
7	STORM WATER POLLUTION PREVENTION PLAN - TRAFFIC CONTROL PLAN
8	PAVEMENT MARKING PLAN
9	ELECTRICAL SITE PLAN
10	SERVICE DETAILS - ELECTRICAL NOTES - LIGHT FOUNDATIONS
11-16	CROSS SECTIONS

LIST OF HIGHWAY STANDARDS

HIGHWAY STANDARD NO.	TITLE
424001-06	PERPENDICULAR CURB RAMPS FOR SIDEWALKS
424006	DIAGONAL CURB RAMPS FOR SIDEWALKS
424011	CORNER PARALLEL CURB RAMPS FOR SIDEWALKS
424021	DEPRESSED CORNER FOR SIDEWALKS
602301-03	INLET - TYPE A
602401-03	MANHOLE TYPE A
602801-02	PRECAST REINFORCED CONCRETE FLAT SLAB TOP
602701-02	MANHOLE STEPS
604001-03	FRAME AND LIDS TYPE 1
604066-02	FRAME AND LID TYPE 15
606001-04	CONCRETE CURB TYPE B AND COMBINATION CONCRETE CURB AND GUTTER
701001-02	OFF-RD OPERATIONS, 2L, 2W, MORE THAN 15' (4.5 M) AWAY
701006-03	OFF-RD OPERATIONS, 2L 2W, 15' (4.5 M) TO 24" (600 MM) FROM PAVEMENT EDGE
701011-02	OFF-RD MOVING OPERATIONS, 2L, 2W, DAY ONLY
701201-04	LANE CLOSURE, 2L, 2W, DAY ONLY, FOR SPEEDS ≥ 45 MPH
701301-04	LANE CLOSURE, 2L, 2W, SHORT TIME OPERATIONS
701311-03	LANE CLOSURE 2L, 2W MOVING OPERATIONS-DAY ONLY
701502-04	URBAN LANE CLOSURE, 2L, 2W, WITH BIDIRECTIONAL LEFT TURN LANE
701901-02	TRAFFIC CONTROL DEVICES
720001-03	SIGN PANEL MOUNTING DETAILS
720006-03	SIGN PANEL ERECTION DETAILS
720001-01	METAL POSTS FOR SIGNS, MARKERS & DELINEATORS
729001-01	APPLICATIONS OF TYPES A & B METAL POSTS (FOR SIGNS & MARKERS)
888001-01	DETECTOR LOOP INSTALLATIONS
888006-01	TYPICAL LAYOUTS FOR DETECTION LOOPS
B.L.R. 17-4	TRAFFIC CONTROL DEVICES - DAY LABOR CONSTRUCTION

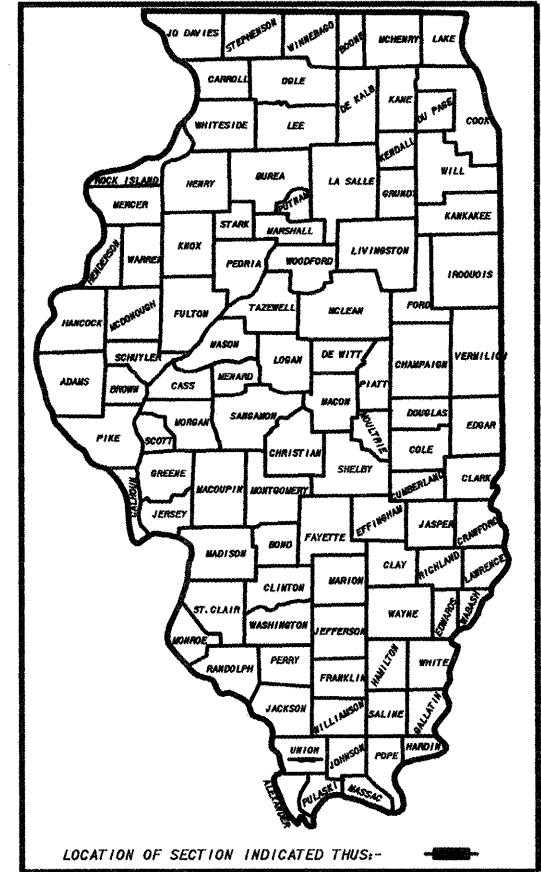


CITY OF ANNA

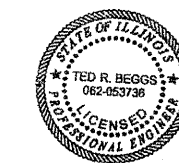
LAYOUT
APPROXIMATE SCALE: 1 INCH = 400 FT.
NET LENGTH OF PROJECT - 672 FT. - 0.127 M.

UTILITIES ON PROJECT

- CITY OF ANNA - GAS, WATER, SEWER
- AMEREN ILLINOIS COMPANY, MARION, IL - ELECTRIC
- FRONTIER, MARION, IL - TELEPHONE
- NEW WAVE COMMUNICATIONS, ANNA, IL - CABLE TV



DESIGN SPEED - 20 M.P.H.
CLASSIFICATION - COLLECTOR
A.D.T. - 3,500
J.U.L.I.E. - 1-800-892-0123



TED R. BEGGS P.E.
REG. NO. 062-053736
DATE 04/12/12
EXPIRES 11-30-13

STATE OF ILLINOIS DEPARTMENT OF TRANSPORTATION	
APPROVED	04-13 2012 <i>James Cross</i> JAMES CROSS - MAYOR CITY OF ANNA
PASSED	4/18 2012 <i>Dennis Hillebrener</i> DENNIS HILLEBRENER - DISTRICT 9 ENGINEER OF LOCAL ROADS & STREETS
RELEASING FOR BID BASED ON LIMITED REVIEW	4/18 2012 <i>Omer Demas</i> OMER DEMAS - DEPUTY DIRECTOR OF HIGHWAYS, REGION 5 ENGINEER

SCALE AS SHOWN	J. T. BLANKINSHIP, INC. CONSULTING ENGINEERS & LAND SURVEYORS ILLINOIS PROFESSIONAL DESIGN FIRM NO. 1504 P.O. BOX 40 401 S. 17TH STREET MURPHYSBORO, ILLINOIS 62449	FILE NO. 8-9394 SHEET NO.
DATE FEB., 2012		

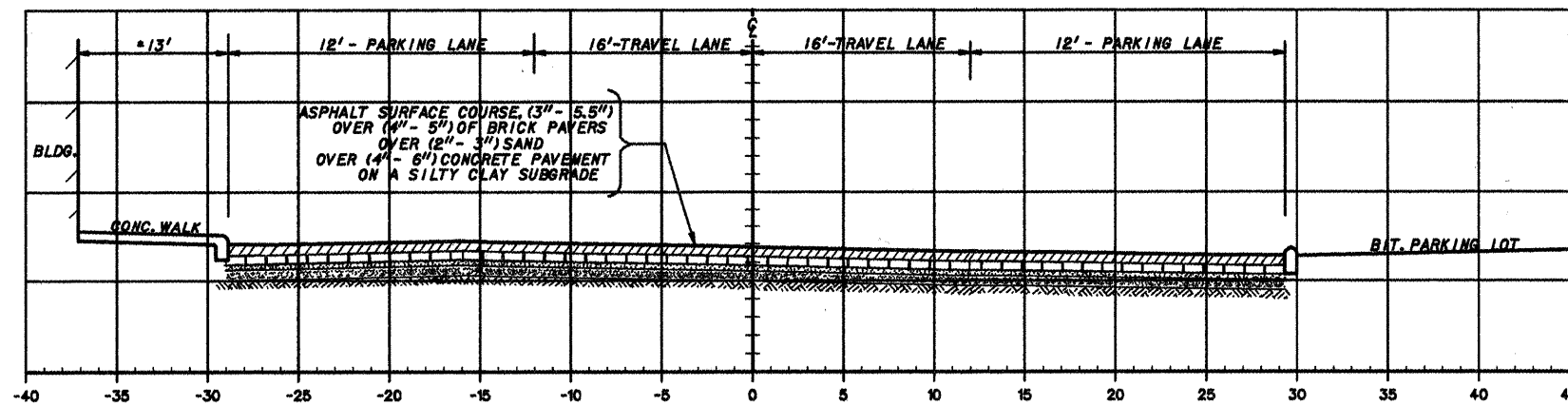
SUMMARY OF QUANTITIES

CONSTRUCTION TYPE CODE 0004

F.A.I. ROUTE	SECTION	COUNTY	TOTAL SHEETS	SHEET NUMBER
8810	10-0080-00-RS	UNION	16	2
CITY OF ANNA		PROJECT NO. 11-9080(008)		
CONTRACT NO. 88470		JOB NO. 098-542-10		

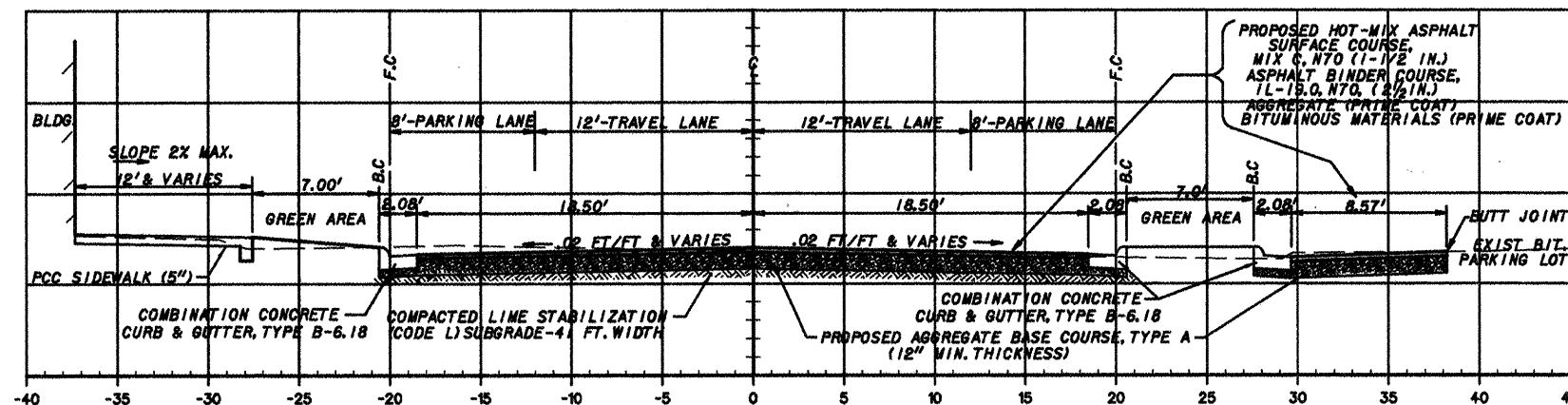
CODE NUMBER	ITEM	UNIT OF MEASURE	QUANTITY	AS-BUILT
△ XX002063	LIGHTING SYSTEM COMPLETE	L SUM	1	
△ XX006348	ELECTRIC SERVICE	L SUM	1	
XZ176100	REMOVE AND RESET BUMPER BLOCKS	EACH	33	
X0323589	STEEL POST REMOVAL	EACH	5	
X2020410	EARTH EXCAVATION (SPECIAL)	CU YD	750	
X6024240	INLETS, SPECIAL	EACH	6	
X6024242	INLETS, SPECIAL, NO. 1	EACH	1	
X7010216	TRAFFIC CONTROL AND PROTECTION, (SPECIAL)	L SUM	1	
Z0056822	STORM SEWERS (WATER MAIN REQUIREMENTS) 36 INCH	FOOT	60	
Z0056650	STORM SEWERS, TYPE 1, WATER MAIN QUALITY PIPE, 15"	FOOT	66	
Z0056870	STORM SEWERS, TYPE 2, WATER MAIN QUALITY PIPE, 18"	FOOT	188	
Z0056672	STORM SEWERS, TYPE 2, WATER MAIN QUALITY PIPE, 24"	FOOT	147	
20800150	TRENCH BACKFILL	CU YD	410	
21101895	TOPSOIL FURNISH AND PLACE 30"	SQ YD	725	
28000500	INLET AND PIPE PROTECTION	EACH	11	
31001500	LIME	TON	95	
31000600	PROCESSING LIME STABILIZED SOIL MIXTURE 12"	SQ YD	3,020	
35100100	AGGREGATE BASE COURSE, TYPE A	TON	3,000	
40600100	BITUMINOUS MATERIALS (PRIME COAT)	GALLON	1,200	
40600300	AGGREGATE (PRIME COAT)	TON	12	

CODE NUMBER	ITEM	UNIT OF MEASURE	QUANTITY	AS-BUILT
40603085	HOT-MIX ASPHALT BINDER COURSE, IL-19.0, N70	TON	550	
40603315	HOT-MIX ASPHALT SURFACE COURSE, MIX "C," N70	TON	330	
42400200	PORTLAND CEMENT CONCRETE SIDEWALK 5 INCH	SQ FT	7,400	
42400800	DETECTABLE WARNINGS	SQ FT	52	
44000100	PAVEMENT REMOVAL	SQ YD	4,750	
44000300	CURB REMOVAL	FOOT	280	
44000500	COMBINATION CURB AND GUTTER REMOVAL	FOOT	52	
44000600	SIDEWALK REMOVAL	SQ FT	7,435	
54248510	CONCRETE COLLAR	CU YD	30	
55100500	STORM SEWER REMOVAL 12"	FOOT	55	
55101200	STORM SEWER REMOVAL 24"	FOOT	148	
55101500	STORM SEWER REMOVAL 33"	FOOT	75	
60221000	MANHOLES, TYPE A, 5'-DIAMETER, TYPE 1 FRAME, OPEN LID	EACH	2	
60234200	INLETS, TYPE A, TYPE 1 FRAME, OPEN LID	EACH	1	
60300305	FRAMES AND LIDS TO BE ADJUSTED	EACH	2	
60500040	REMOVING MANHOLES	EACH	1	
60500060	REMOVING INLETS	EACH	5	
60604400	COMBINATION CONCRETE CURB AND GUTTER, TYPE B-6.18	FOOT	1,466	
67100100	MOBILIZATION	L SUM	1	
72000100	SIGN PANEL-TYPE 1	SQ FT	6	
72900100	METAL POST-TYPE A	FOOT	48	
△ 78001100	PAINT PAVEMENT MARKING-LETTERS AND SYMBOLS	SQ FT	26	
△ 78001110	PAINT PAVEMENT MARKING-LINE 4"	FOOT	2,065	
△ 78001150	PAINT PAVEMENT MARKING-LINE 12"	FOOT	430	
△ 78001180	PAINT PAVEMENT MARKING-LINE 24"	FOOT	45	
△ 88600100	DETECTOR LOOP, TYPE 1	FOOT	160	
XX008669	CHURCH HANDICAP RAMP	L SUM	1	
XX008670	HMA PAVEMENT SEALING-2 COATS	SQ YD	2,260	



EXISTING TYPICAL SECTION

NOT TO SCALE

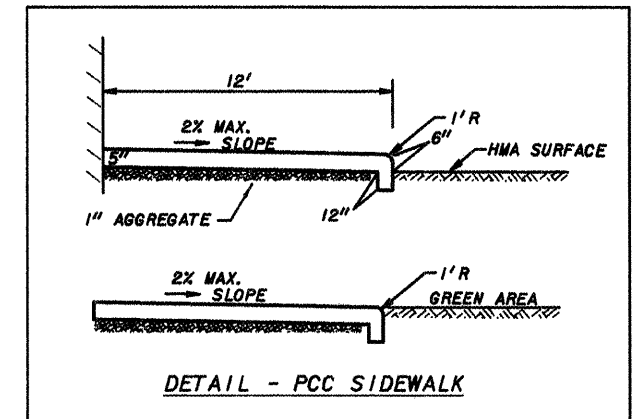


PROPOSED TYPICAL SECTION

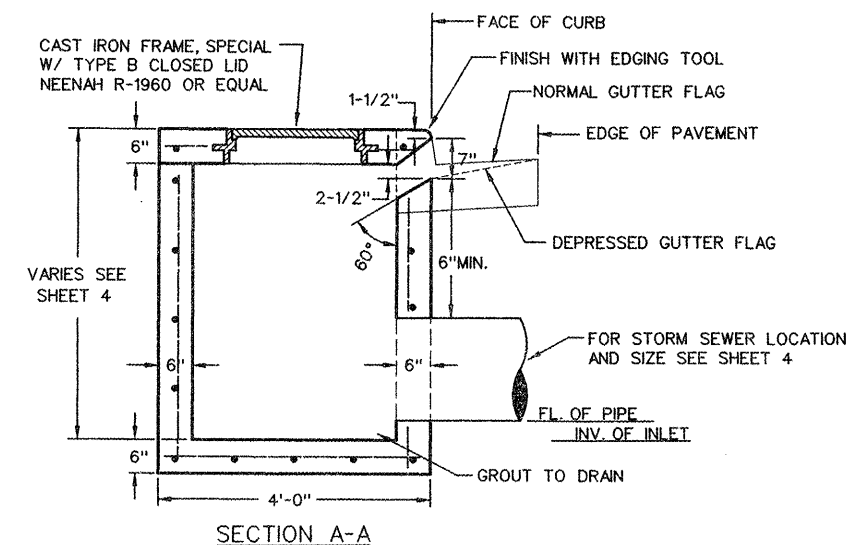
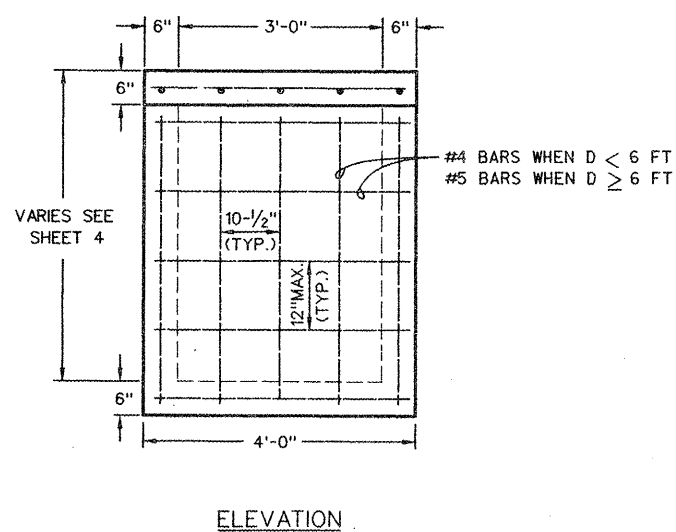
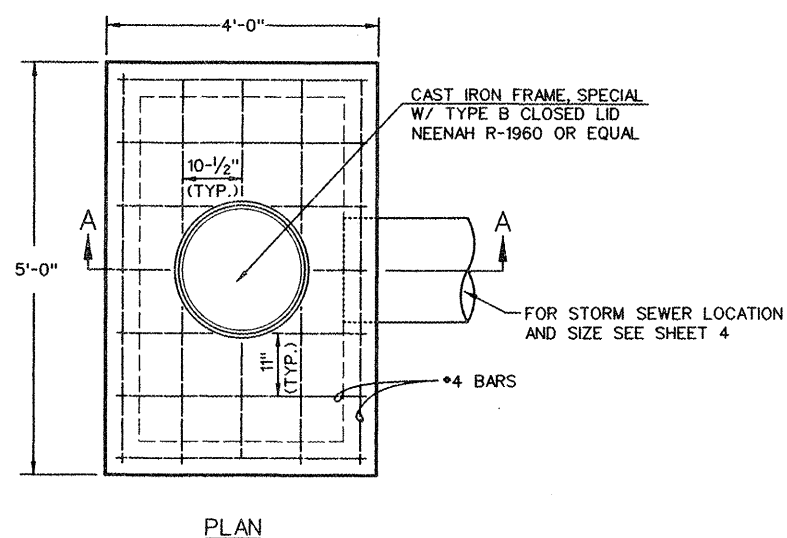
NOT TO SCALE

△ SPECIALTY ITEMS

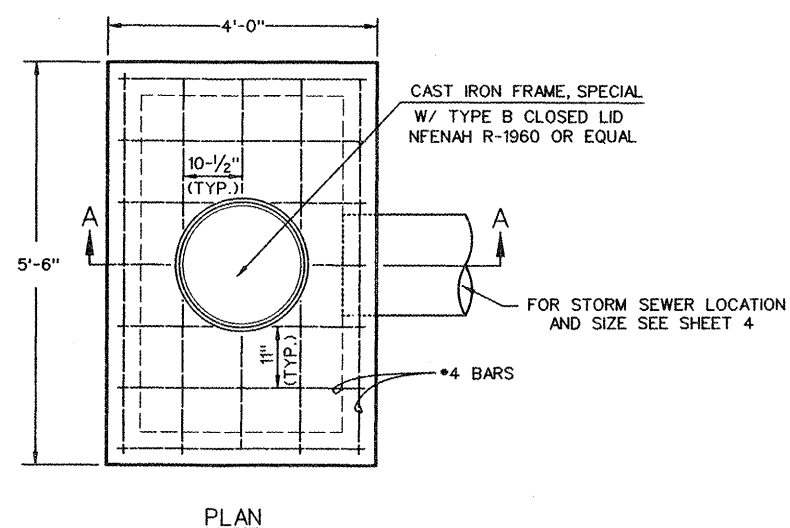
STRUCTURAL DESIGN DATA - EAST DAVIE STREET
 STRUCTURAL DESIGN TRAFFIC, YEAR 2022
 PV = 3.564 SU = 74 MU = 37
 ROAD/STREET CLASSIFICATION: CLASS II
 PERCENT OF STRUCTURAL DESIGN TRAFFIC IN DESIGN LANE:
 P = 50% S = 50% M = 50%
 TRAFFIC FACTOR: ACTUAL TF = 0.83
 PG GRADE: BINDER = 64-22 SURFACE = 64-22
 SUBGRADE SUPPORT RATING:
 1BR = 4.0



F.A.U. ROUTE	SECTION	COUNTY	TOTAL SHEETS	SHEET NUMBER
9910	10-00050-00-RS	UNION	15	3
CITY OF ANNA		PROJECT NO. M-5080(005)		
CONTRACT NO. 99470		JOB NO. C99-509-10		

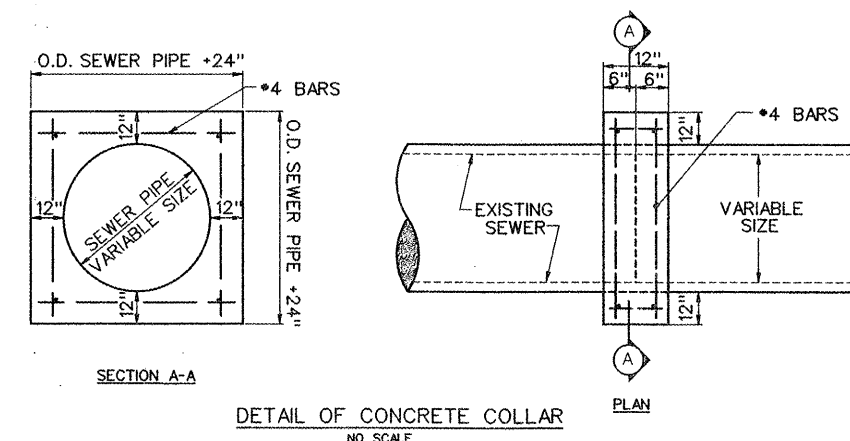
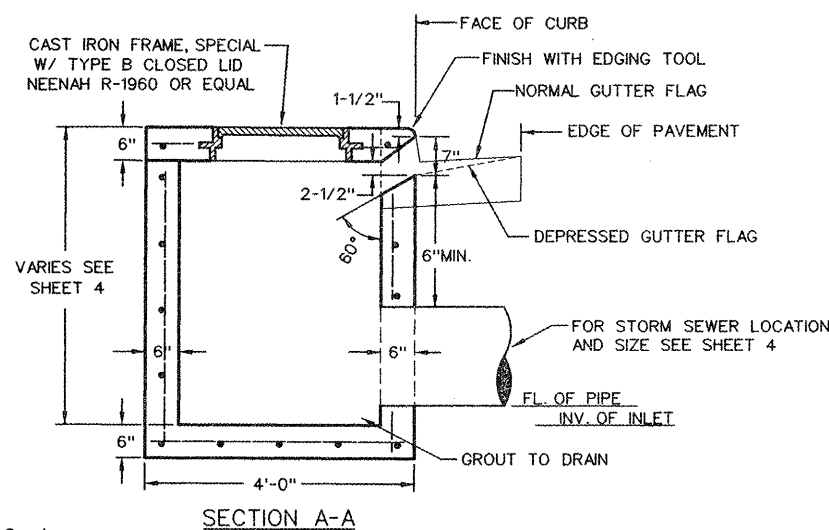
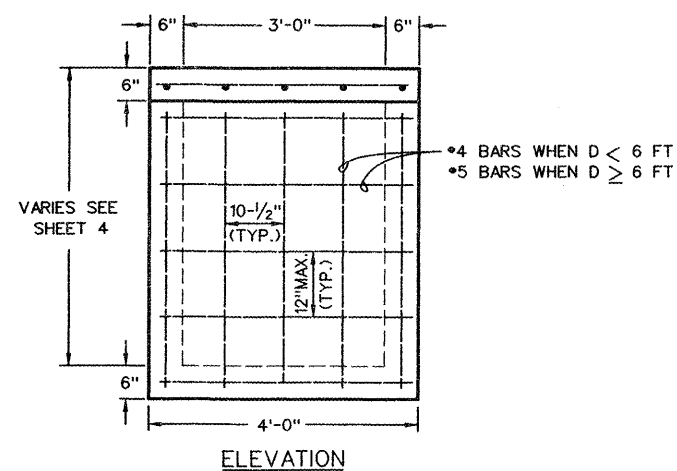


DETAIL - INLET SPECIAL
NOT TO SCALE

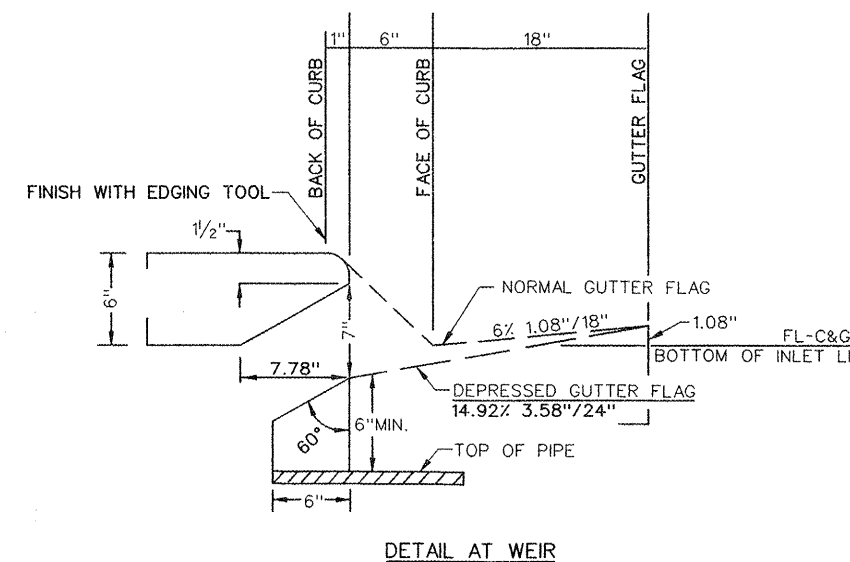


NOTES TO CONTRACTOR:

1. THE TOP OF CASTING ELEVATIONS SHOWN ON THE PLAN AND PROFILES IS LOCATED AT THE CENTER OF INLET SPECIALS AT THE BACK/TOP OF CURB. THE CONTRACTOR SHALL SLOPE THE TOP OF THE INLETS TO MATCH THE GRADE OF THE CURB AND GUTTER AND/OR SIDEWALK.
2. CAST IRON STEPS TO BE INSTALLED IN ALL INLETS DEEPER THAN 4 FEET. SEE HIGHWAY STANDARD 602701.
3. ALL INLET SPECIALS SHALL BE PRECAST.
4. INLET SPECIALS (LESS THAN 6 FEET IN DEPTH). REBARS IN WALLS AND BOTTOMS SHALL BE #4 BARS. REBARS IN TOPS SHALL BE #4 BARS.
5. INLET SPECIALS (6 FEET AND OVER IN DEPTH). REBARS IN WALLS AND BOTTOMS SHALL BE #5 BARS. REBARS IN TOPS SHALL BE #4 BARS.
6. REINFORCEMENT IN PRECAST INLET SPECIALS SHALL MEET ALL SPECIFICATIONS OF THE ILLINOIS DEPT. OF TRANSPORTATION'S LATEST EDITION OF THE "STANDARD SPECIFICATIONS FOR ROAD AND BRIDGE CONSTRUCTION IN ILLINOIS".
7. SHOP DRAWINGS FROM THE MANUFACTURER OF ALL INLET SPECIALS MUST BE APPROVED BY THE ENGINEER PRIOR TO THE PRODUCTION OF INLETS AT THE PLANT.

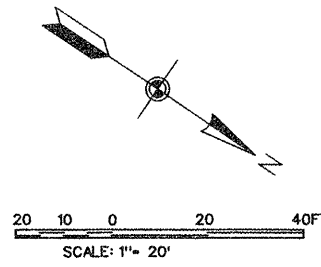


DETAIL - INLET BOX, SPECIAL, NO. 1
NOT TO SCALE



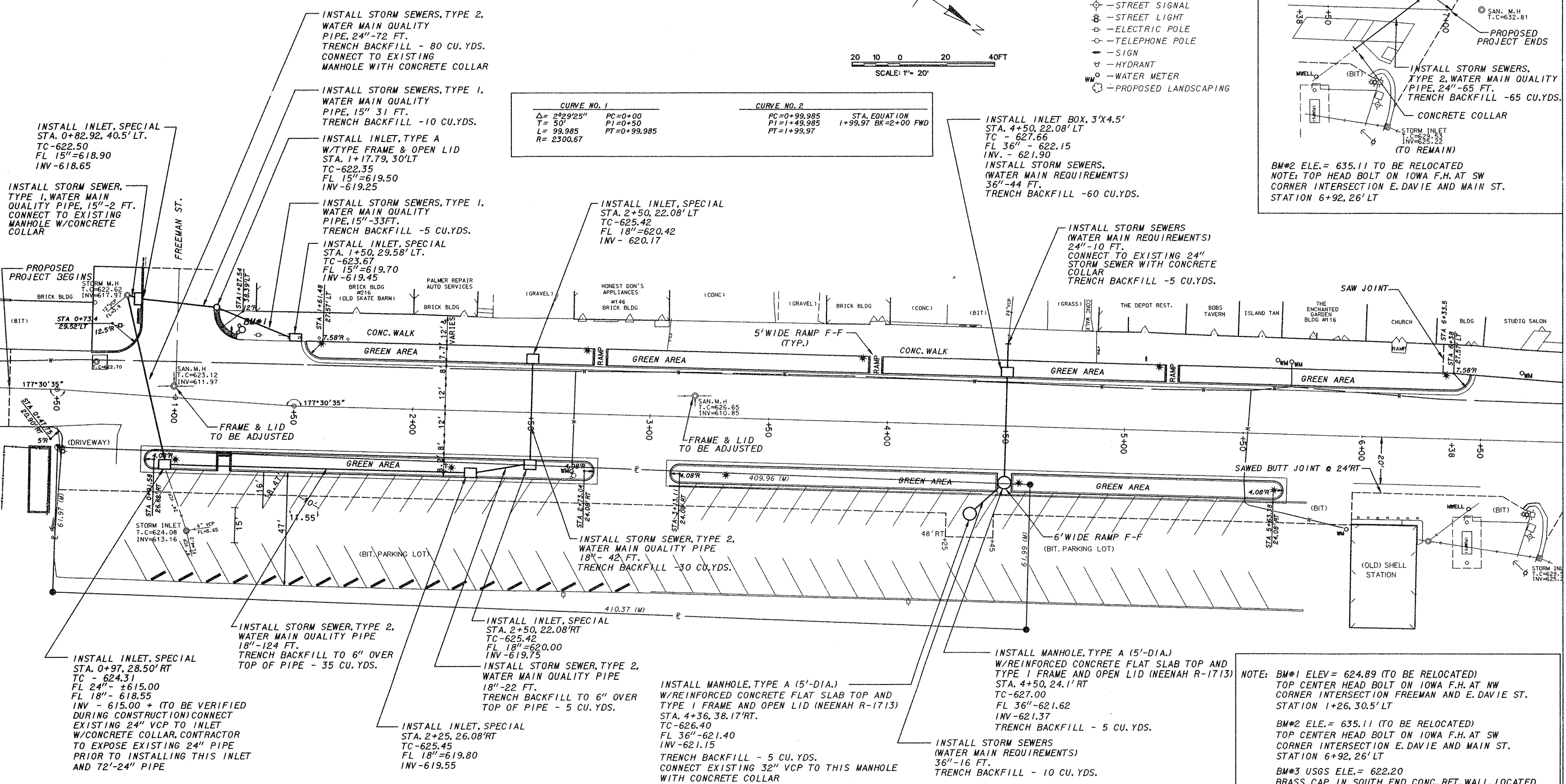
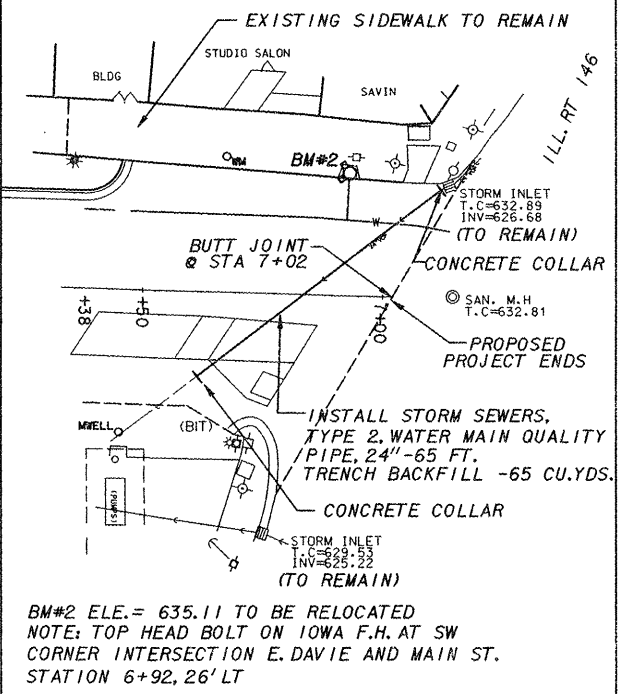
F.A.U. ROUTE	SECTION	COUNTY	TOTAL SHEETS	SHEET NUMBER
9910	10-00050-00-RS	UNION	16	4
CITY OF ANNA		PROJECT NO. M-5080(006)		
CONTRACT NO. 99470		JOB NO. C99-542-10		

+50 1+00 +50 2+00 +50 3+00 +50 4+00 +50 5+00 +50



- LEGEND**
- ⊙ - PROPOSED STREET LIGHT
 - ⊕ - STREET SIGNAL
 - ⊙ - STREET LIGHT
 - ⊕ - ELECTRIC POLE
 - ⊕ - TELEPHONE POLE
 - ⊙ - SIGN
 - ⊕ - HYDRANT
 - ⊕ - WATER METER
 - ⊕ - PROPOSED LANDSCAPING

CURVE NO. 1		CURVE NO. 2		STA. EQUATION
Δ = 2°29'25"	PC = 0+00	PC = 0+99.985	PT = 1+99.97	1+99.97 BK=2+00 FWD
T = 50'	PI = 0+50	PI = 1+49.985	PT = 1+99.97	
L = 99.985	PT = 0+99.985			
R = 2300.67				



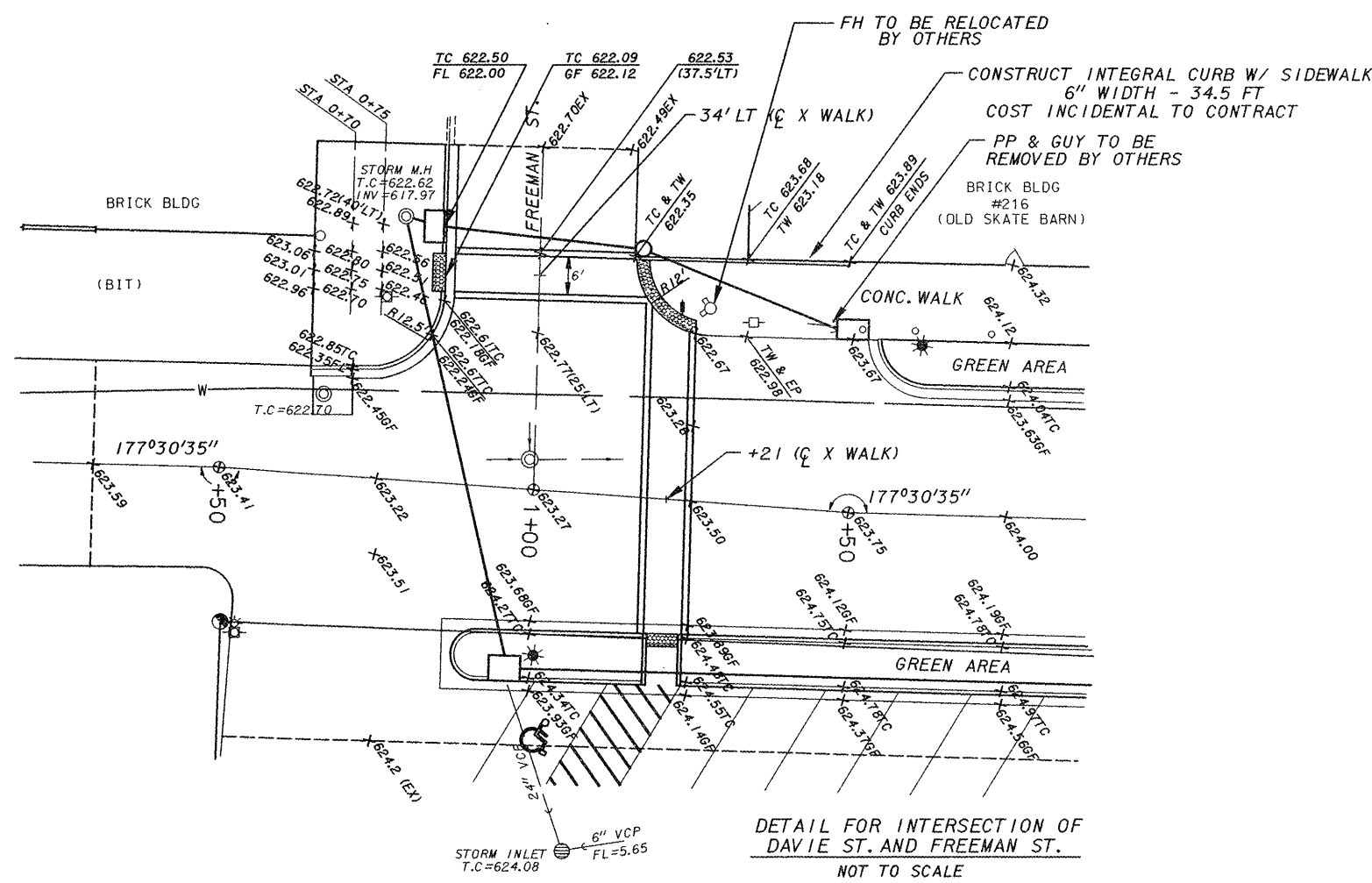
NOTE: BM#1 ELEV = 624.89 (TO BE RELOCATED)
TOP CENTER HEAD BOLT ON IOWA F.H. AT NW CORNER INTERSECTION FREEMAN AND E. DAVIE ST. STATION 1+26.30.5' LT

BM#2 ELEV = 635.11 (TO BE RELOCATED)
TOP CENTER HEAD BOLT ON IOWA F.H. AT SW CORNER INTERSECTION E. DAVIE AND MAIN ST. STATION 6+92.26' LT

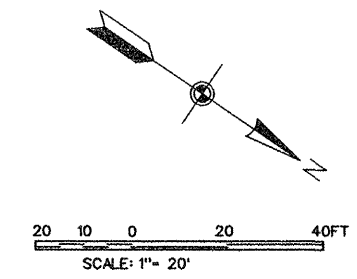
BM#3 USGS ELEV = 622.20
BRASS CAP IN SOUTH END CONC. RET. WALL. LOCATED AT E. SIDE ANNA STATE BANK ± 31' SE CORNER OF BANK ± 43' S. CORNER OF BANK ± 34' N. OF E. VIENNA ST.

NOTE: CONTRACTOR TO EXCAVATE AND EXPOSE EXISTING 8" DI/C1 WATER MAINS AT ALL LOCATIONS WHERE NEW STORM SEWERS CROSS WATER MAIN PRIOR TO THE INSTALLATION OF ANY NEW INLETS/STORM SEWER/MANHOLES.

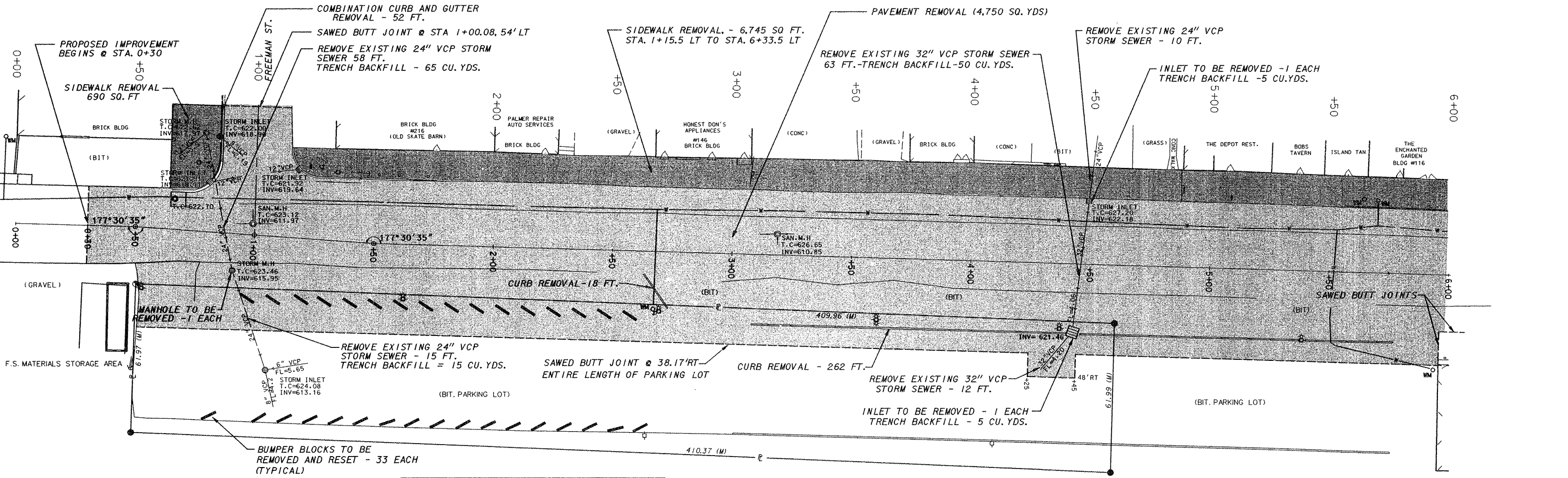
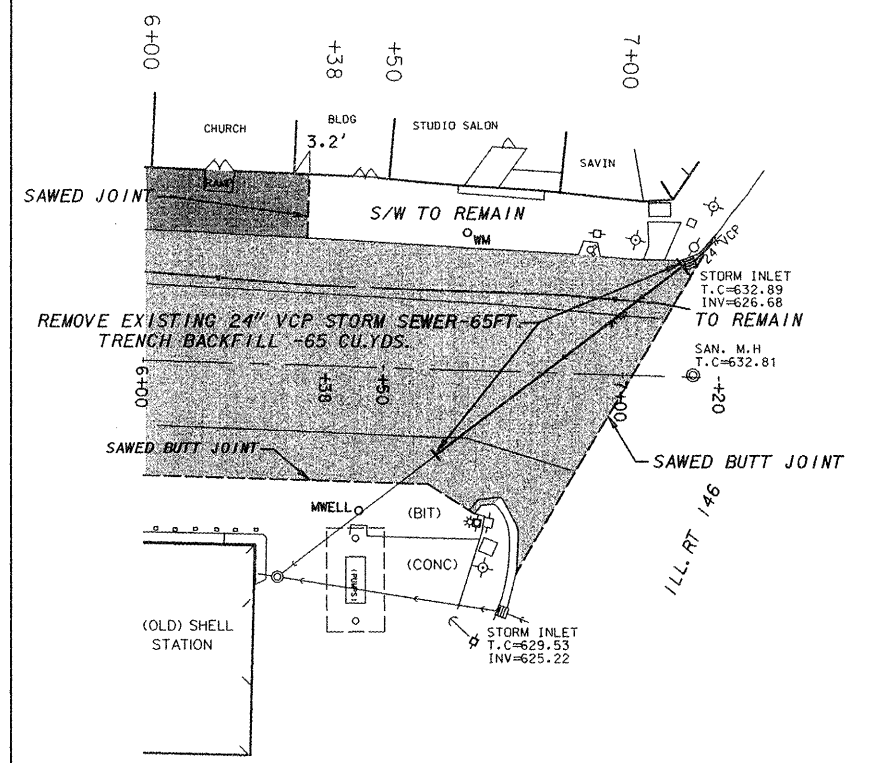
F.A.U. ROUTE	SECTION	COUNTY	TOTAL SHEETS	SHEET NUMBER
9910	10-00050-00-RS	UNION	16	5
CITY OF ANNA		PROJECT NO. M-5080(006)		
CONTRACT NO. 99470		JOB NO. C99-542-10		



DETAIL FOR INTERSECTION OF DAVIE ST. AND FREEMAN ST.
NOT TO SCALE

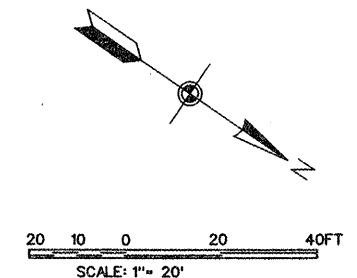
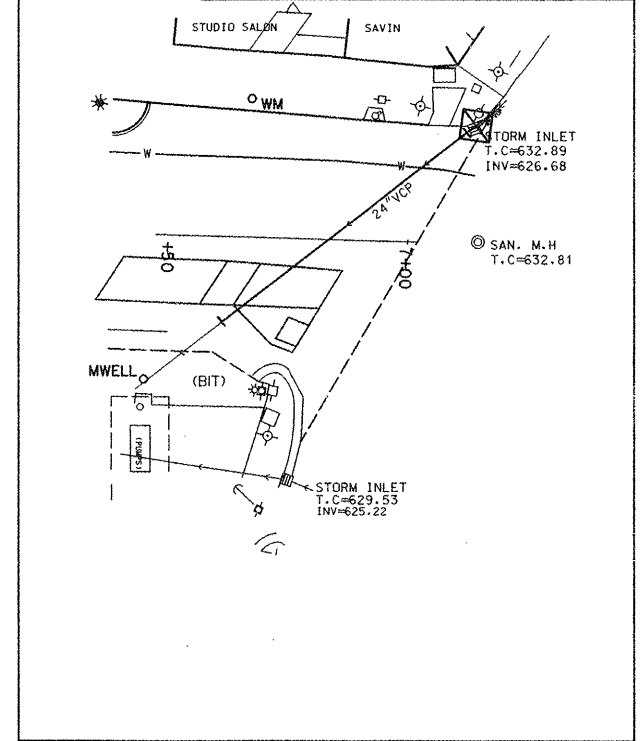


LEGEND
 [Hatched Area] SIDEWALK REMOVAL - 7,435 SQ. FT.
 [Stippled Area] PAVEMENT REMOVAL - 4,750 SQ. YDS.

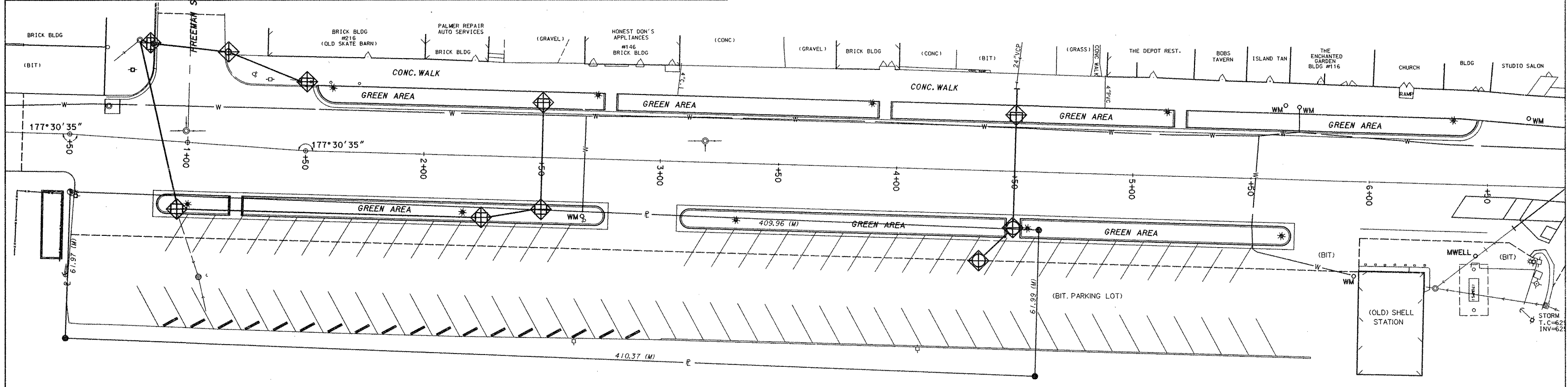
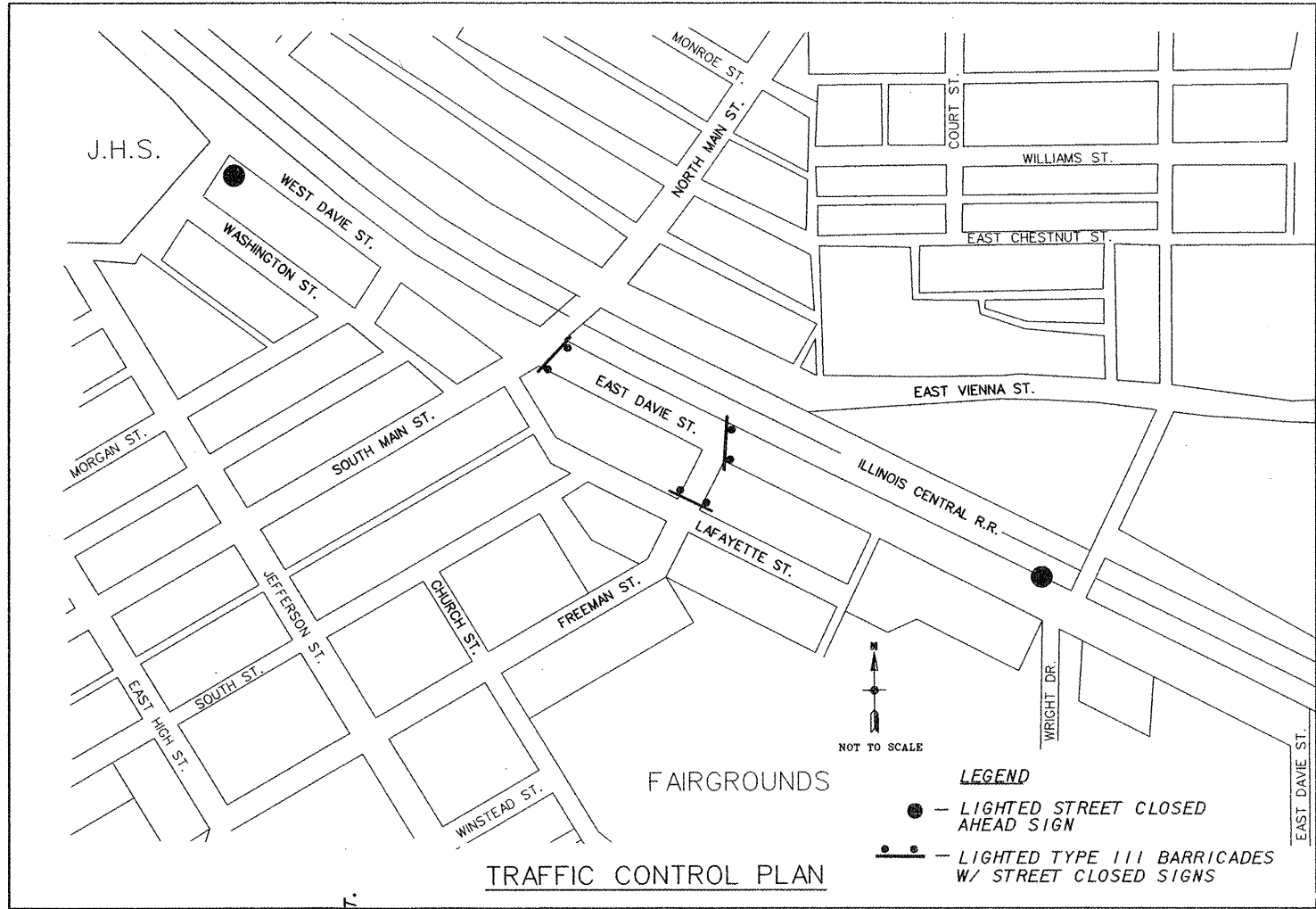


INLETS TO BE REMOVED - 3 EACH
 ALL EXISTING STORM SEWERS IN THIS INTERSECTION TO BE REMOVED AND VOIDS FILLED WITH TRENCH BACKFILL - 20 CU. YDS. +55 FT.

F.A.U. ROUTE	SECTION	COUNTY	TOTAL SHEETS	SHEET NUMBER
9910	10-00050-00-RS	UNION	16	7
CITY OF ANNA		PROJECT NO. M-5080(006)		
CONTRACT NO. 99470		JOB NO. C99-542-10		



- LEGEND**
- ☼ - PROPOSED STREET LIGHT
 - ⊕ - TRAFFIC SIGNAL
 - ⊙ - EXISTING STREET LIGHT
 - ⊠ - ELECTRIC POLE
 - - TELEPHONE POLE
 - - SIGN
 - ⊕ - HYDRANT
 - WM - WATER METER

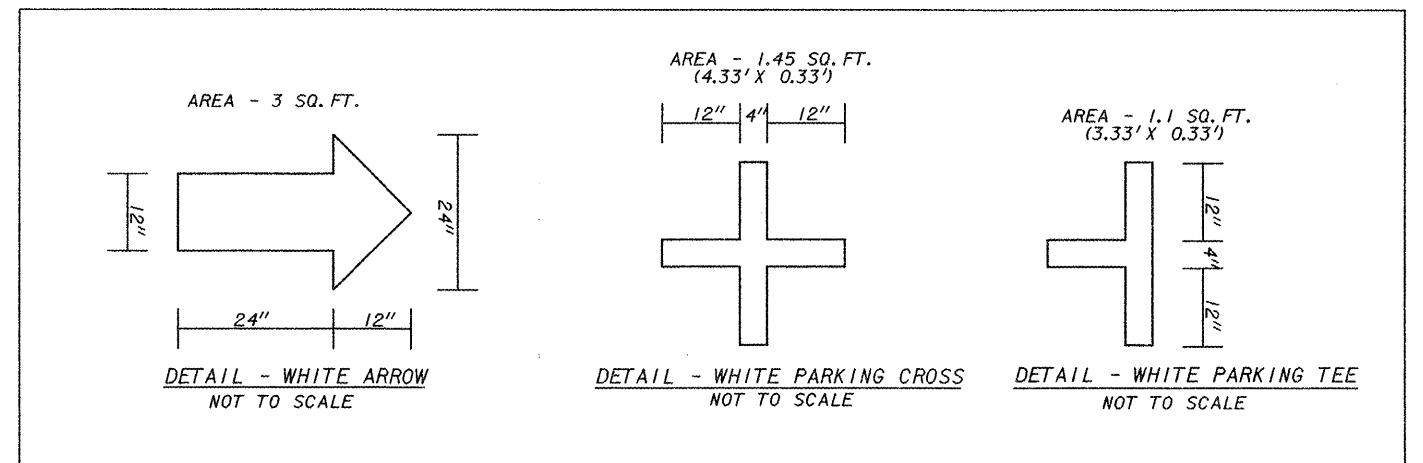
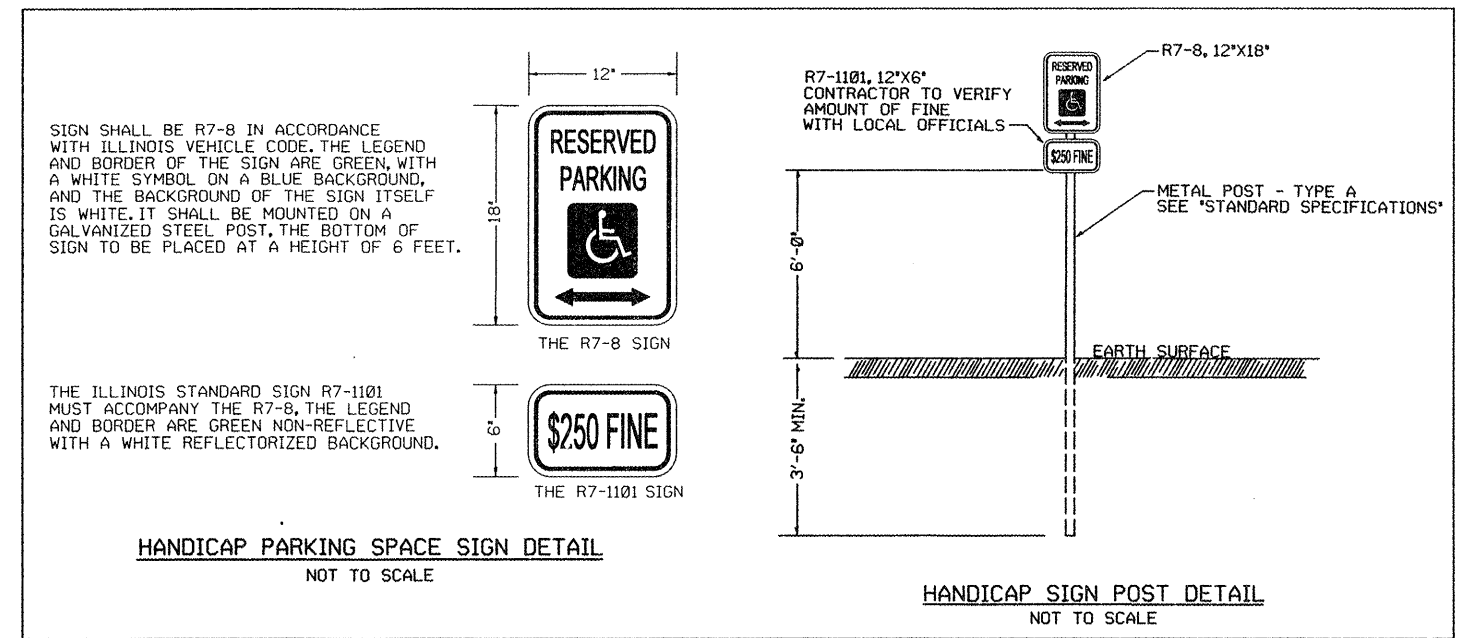
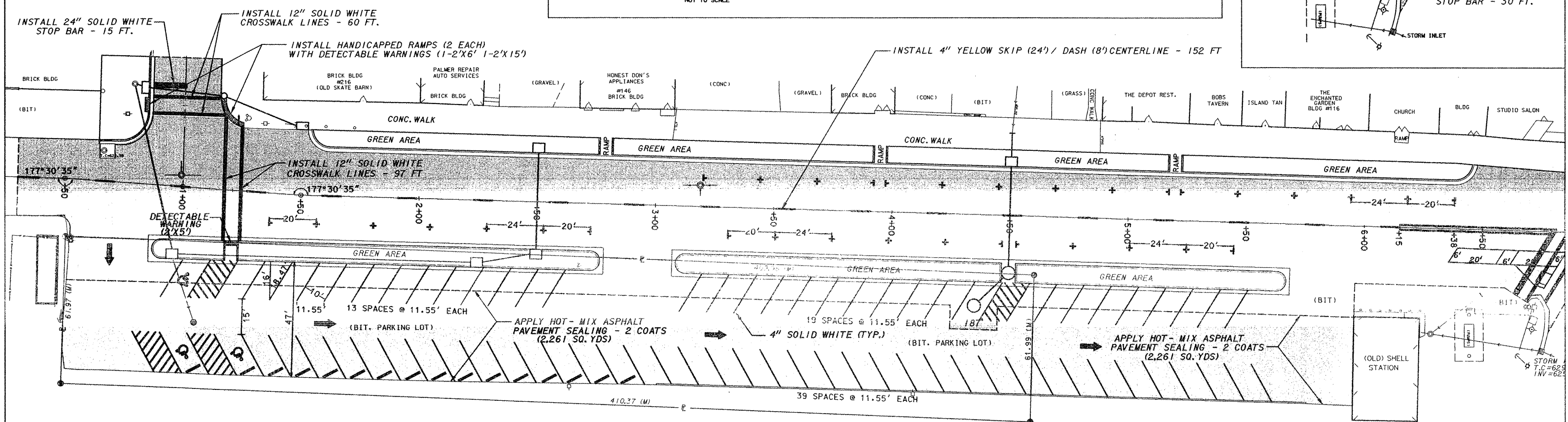
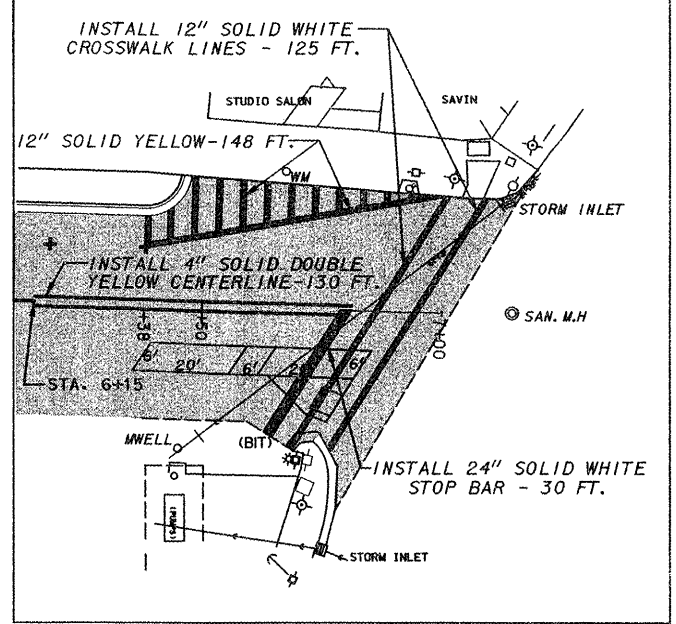
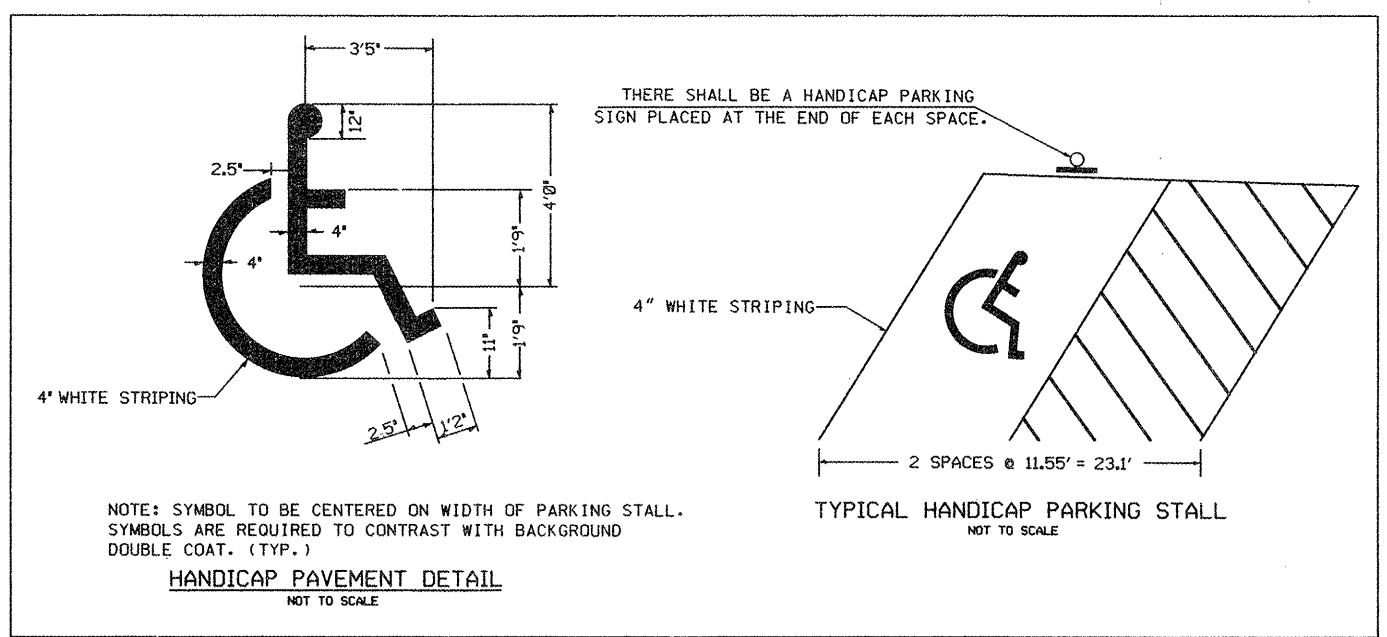
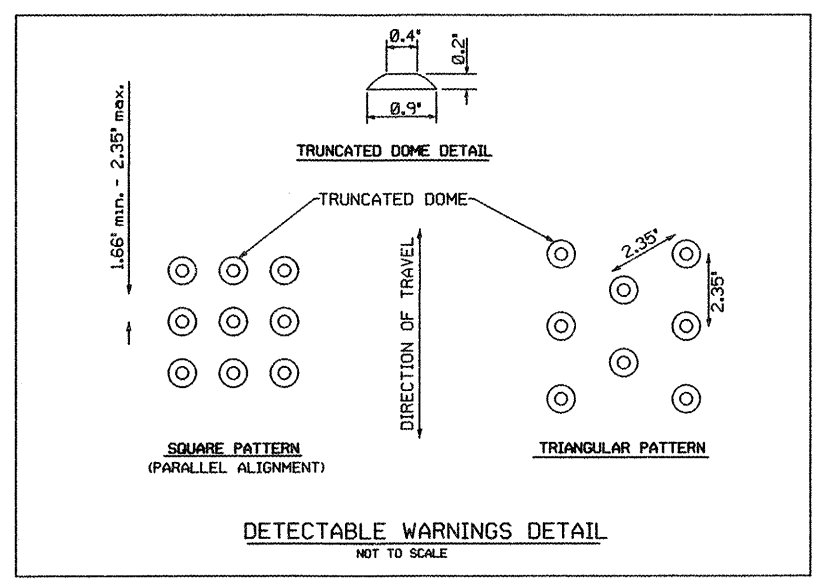


- LEGEND**
- ALL ITEMS SHALL BE CONSTRUCTED AS SHOWN ON ILLINOIS DEPARTMENT OF TRANSPORTATION HIGHWAY STANDARD 280001 AND AS DIRECTED BY THE ENGINEER. MAINTENANCE AND CLEANING OF THE EROSION CONTROL ITEMS SHALL BE INCLUDED IN THE RESPECTIVE EROSION CONTROL PAY ITEM.
 - SEE STORM WATER PREVENTION PLAN (SWPPP) BDE 2342 INCLUDED IN SPECIAL PROVISIONS.

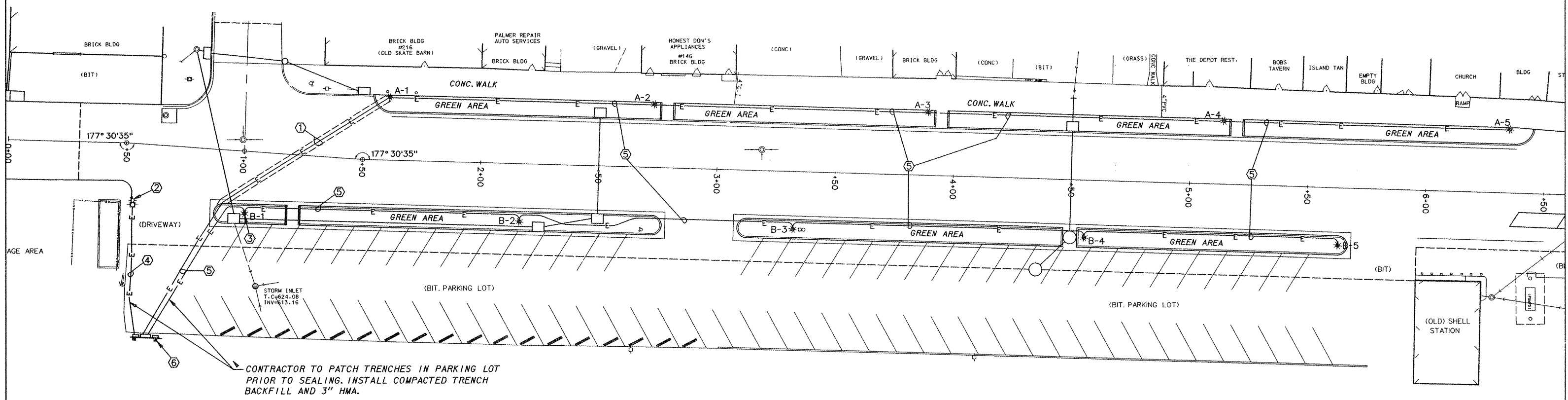
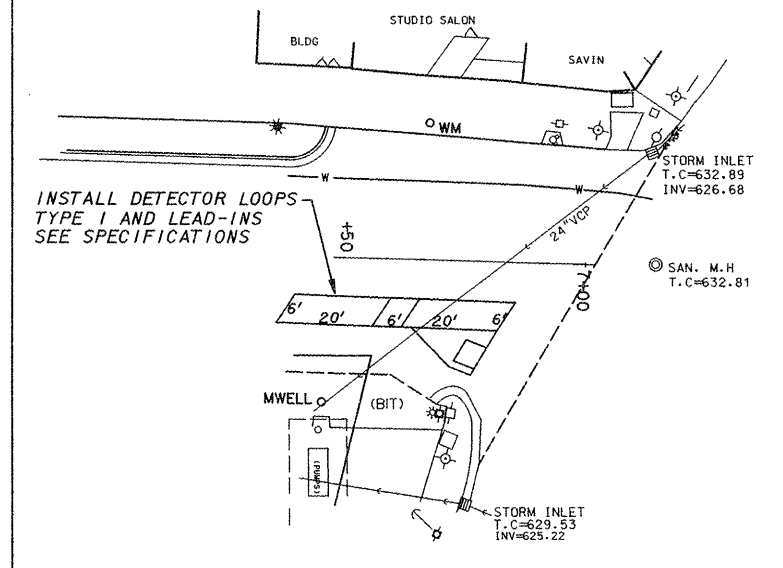
◆ - INLET AND PIPE PROTECTION - 11 EACH

CITY OF ANNA UNION COUNTY, ILLINOIS
IMPROVEMENTS TO EAST DAVIE STREET
STORM WATER POLLUTION PREVENTION PLAN - TRAFFIC CONTROL PLAN

F.A.U. ROUTE	SECTION	COUNTY	TOTAL SHEETS	SHEET NUMBER
9910	10-00050-00-RS	UNION	16	8
CITY OF ANNA		PROJECT NO. M-5080(006)		
CONTRACT NO. 99470		JOB NO. C99-542-10		



F.A.U. ROUTE	SECTION	COUNTY	TOTAL SHEETS	SHEET NUMBER
9910	10-00050-00-RS	UNION	16	9
CITY OF ANNA		PROJECT NO. M-5080(006)		
CONTRACT NO. 99470		JOB NO. C99-542-10		



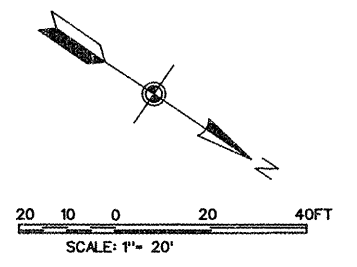
CONTRACTOR TO PATCH TRENCHES IN PARKING LOT PRIOR TO SEALING. INSTALL COMPACTED TRENCH BACKFILL AND 3" HMA.

SITE PLAN NOTES:

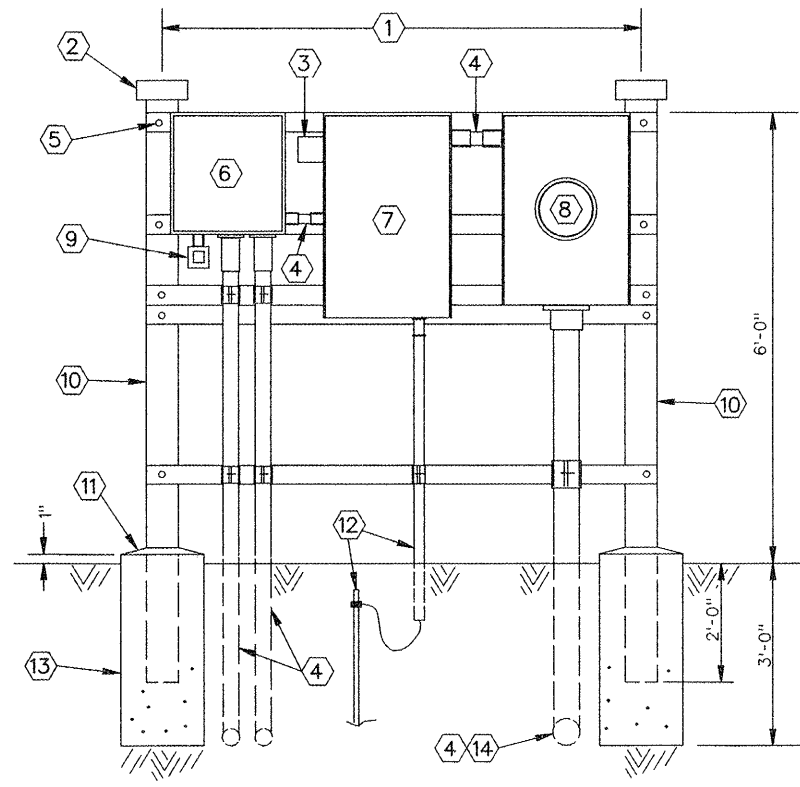
- ① CONDUIT UNDER DAVIE STREET SHALL BE 3 FT. DEEP MINIMUM AND ENCASED 3" ON ALL SIDES WITH CONCRETE.
- ② EXISTING AMEREN ILLINOIS POWER POLE. INSTALL SERVICE RISER UP POLE TO HEIGHT REQUIRED BY AMEREN AND TERMINATE IN A WEATHERHEAD. VERIFY SERVICE REQUIREMENTS PRIOR TO INSTALLATION AND ADJUST PER AMEREN REGULATIONS.
- ③ TYPICAL FOR TEN LIGHTING ASSEMBLIES. SEE FOUNDATION DETAIL, SHEET 10.
- ④ SERVICE CONDUIT IN TRENCH SHALL BE 3 FT DEEP, MINIMUM.
- ⑤ LIGHTING SYSTEM CONDUIT IN TRENCH SHALL BE 2 FT DEEP, MINIMUM. SEE SYSTEM I- LINE DIAGRAM.
- ⑥ SERVICE EQUIPMENT STRUCTURE. SEE DETAIL, SHEET 10.

LEGEND

- A-3 — TYPE "A" ASSEMBLY
- B-3 — TYPE "B" ASSEMBLY
- ☀ — PROPOSED STREET LIGHT
- E— — PROPOSED UNDERGROUND ELECTRICAL
- E— — PROPOSED UNDERGROUND ELECTRICAL CONCRETE ENCASED
- ⊕ — TRAFFIC SIGNAL
- ☀ — EXISTING STREET LIGHT
- ⊕ — ELECTRIC POLE
- ⊕ — TELEPHONE POLE
- — SIGN
- ⊕ — HYDRANT
- ⊕ — WATER METER



F.A.U. ROUTE	SECTION	COUNTY	TOTAL SHEETS	SHEET NUMBER
9910	10-00050-00-RS	UNION	16	10
CITY OF ANNA		PROJECT NO. M-5080(006)		
CONTRACT NO. 99470		JOB NO. C99-542-10		



SERVICE DETAIL
NTS

SERVICE DETAIL NOTES

- ① WIDTH OF STRUCTURE SHALL BE AS REQUIRED TO MOUNT ALL ENCLOSURES.
- ② THREADED CAPS ON CONDUIT ENDS.
- ③ LIGHTNING ARRESTOR FOR 120/240 VOLT, SINGLE-PHASE SERVICE- SQUARE D *SDSA1175 OR EQUAL. CONNECT TO LINE-SIDE OF MAIN BREAKER.
- ④ SEE SYSTEM 1-LINE DIAGRAM.
- ⑤ CROSS-MEMBERS SHALL BE 12 GA, 1 5/8" SQUARE, 316 STAINLESS STEEL STRUT; QUANTITY AS REQUIRED TO PROVIDE TOP AND BOTTOM SUPPORT FOR ENCLOSURES AND CONDUIT SHOWN. FASTEN TO POSTS WITH 1/2" DIAMETER, HEX-HEAD, 316 STAINLESS STEEL MACHINE BOLTS, NUTS AND LOCKWASHERS.
- ⑥ CONTROL PANEL- SEE DETAIL THIS SHEET.
- ⑦ 200 AMP, 120/240 VOLT, SINGLE PHASE, 3-WIRE S/N, MAIN BREAKER, 20 CIRCUIT MAIN DISTRIBUTION PANEL (MDP) IN NEMA 3R ENCLOSURE-SQUARE D *QO12040M200RB. BRANCH BREAKERS SHALL BE PLUG-ON STYLE, SIZE AND QUANTITY PER SYSTEM 1-LINE DIAGRAM.
- ⑧ 200 AMP, 120/240 VOLT, SINGLE PHASE, 3-WIRE METER BASE BY CONTRACTOR TO AMEREN ILLINOIS STANDARDS.
- ⑨ 120 VOLT, 1900 VA, ADJUSTABLE, SWIVEL-MOUNT PHOTOCONTROL-PARAGON *CW201S-00, OR EQUAL.

- ⑩ SUPPORT POSTS SHALL BE 3" DIAMETER, SCHEDULE 40 GALVANIZED CONDUIT, EMBEDDED IN CONCRETE BASE AS SHOWN.
- ⑪ SLOPE CONCRETE TO DRAIN AWAY FROM POSTS.
- ⑫ 1- *4 GROUNDING ELECTRODE IN 1/2" SCHEDULE 80 PVC FROM THE PANEL BONDED NEUTRAL BUS TO A 3/8"X8' GROUND ROD DRIVEN 1FT TO THE TOP BELOW GRADE.
- ⑬ 1FT DIAMETER X 3 FT DEEP CONCRETE FOUNDATION, POURED AGAINST UNDISTURBED SOIL. TYPICAL FOR TWO.
- ⑭ SERVICE LATERAL CONDUIT TO AMEREN ILLINOIS POWER POLE PER SITE PLAN, SHEET 9.

CONTROL PANEL SPECIFICATIONS

MATERIALS OF EQUAL QUALITY AND PERFORMANCE TO THOSE COMPONENTS SPECIFIED BELOW WILL BE CONSIDERED FOR THIS PROJECT. SUBMITTALS SHALL BE PROVIDED FOR EACH COMPONENT FOR REVIEW BY THE ENGINEER.

ENCLOSURE SHALL BE 16" X 12" X 8" DEEP, HINGE-DOOR, LOCKABLE, NEMA 4 WITH WHITE BACK-PANEL AND INTERNAL WHITE SWING-OUT PANEL-HOFFMAN *A16H12BLP/A16P12/ANADF, OR EQUAL.

LIGHTING CONTACTORS SHALL BE 2-POLE, 30 AMP RATED, OPEN TYPE WITH 120 VAC COIL-SQUARE D, CLASS 8903, *LO30V02, OR EQUAL.

HAND-OFF-AUTO SELECTOR SWITCHES SHALL BE 3-POSITION, MAINTAINED-CONTACT, 30 MM DIAMETER, NEMA 4X WITH LEGEND AND CONTACT ARRANGEMENT AS SHOWN-SQUARE D, CLASS 9001, *SKS43BH13, OR EQUAL. MOUNT SWITCHES IN INNER SWING-OUT PANEL.

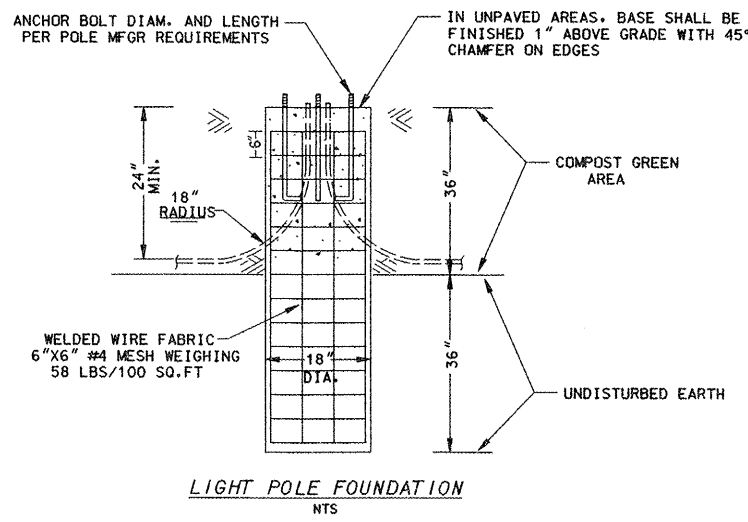
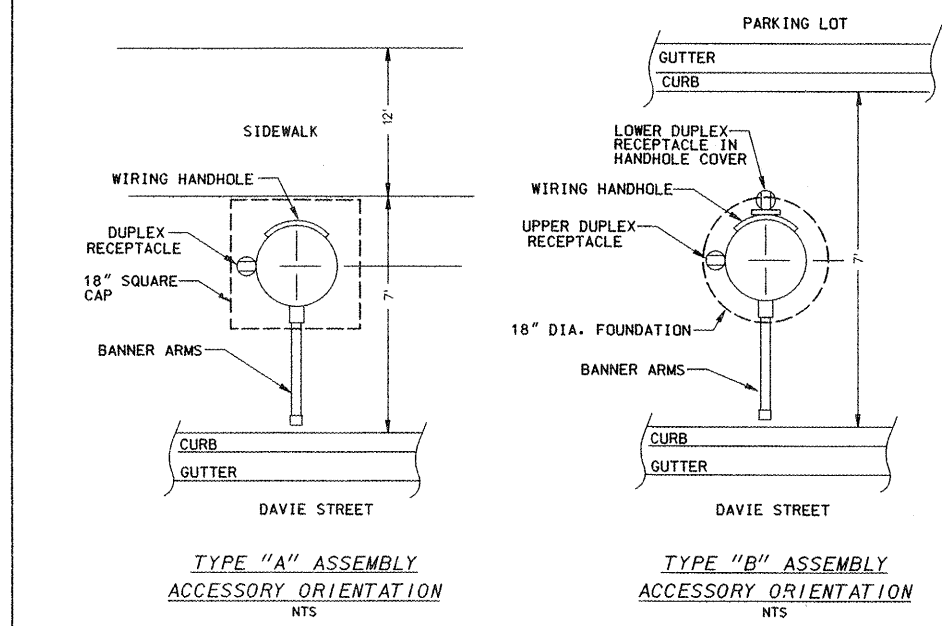
TIME CLOCK (TC) SHALL BE PROGRAMMABLE, SPDT, DIN-RAIL MOUNTED, 15 AMP RATED, WITH BACKUP BATTERY-PARAGON *EC71D/30S/120V, OR EQUAL.

FIELD TERMINALS SHALL BE MODULAR DIN-RAIL BOX LUG TYPE, 30 AMP RATED. PROVIDE END CLAMPS TO PREVENT TERMINAL MOVEMENT.

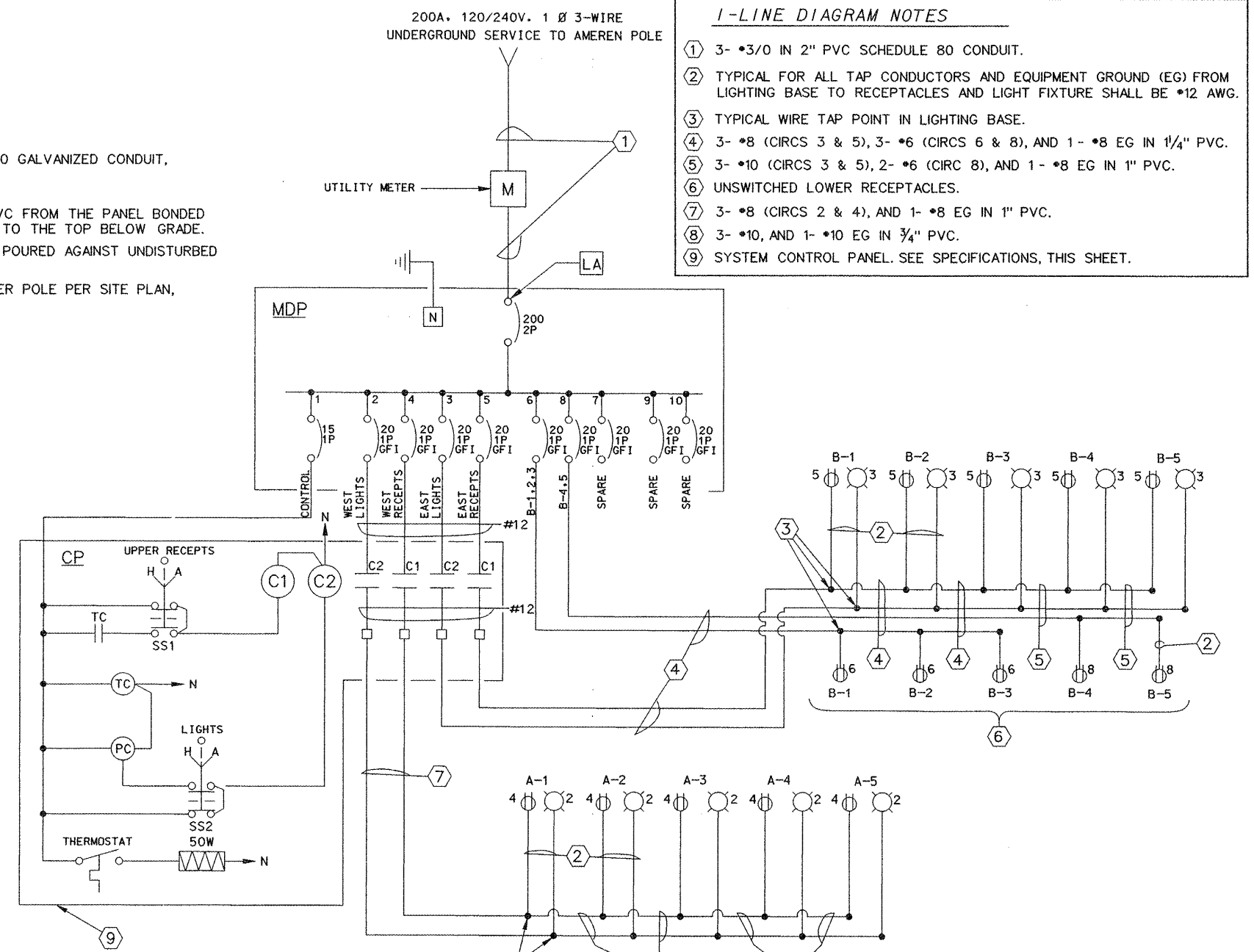
ENCLOSURE CONDENSATION HEATER SHALL BE 120 VOLT, 25 WATT, FLANGE-MOUNTED STYLE WITH THERMOSTAT-WATLOW *010050C1EY0CE, OR EQUAL.

INTERNAL CONTROL WIRING SHALL BE *16 AWG UNLESS NOTED OTHERWISE.

PROVIDE A CORROSION INHIBITOR-HOFFMAN *AHCH1DV.

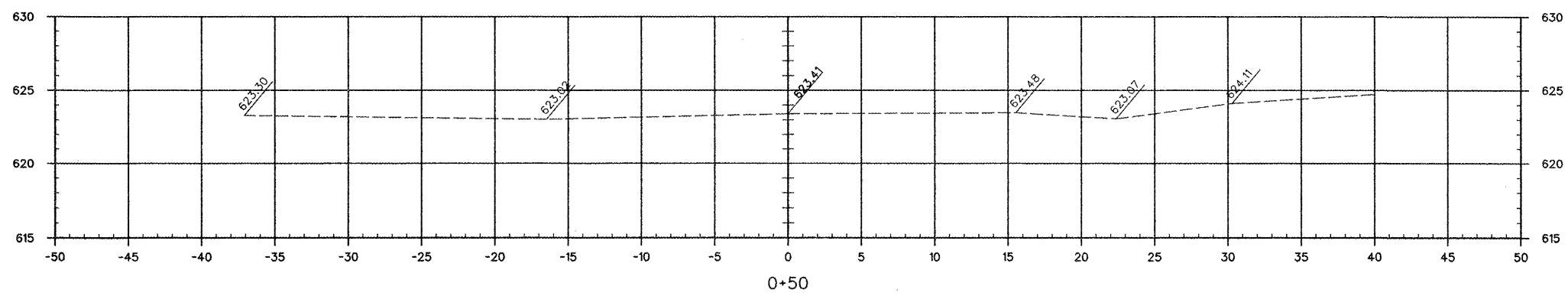
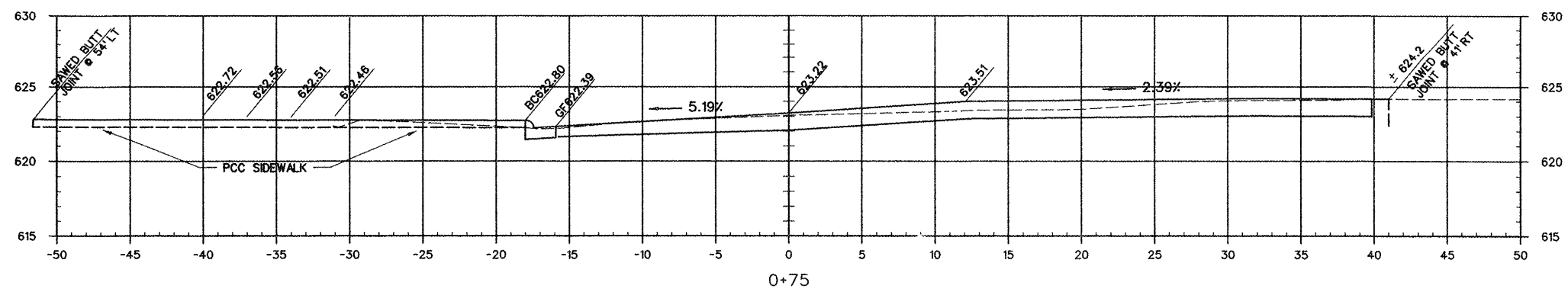
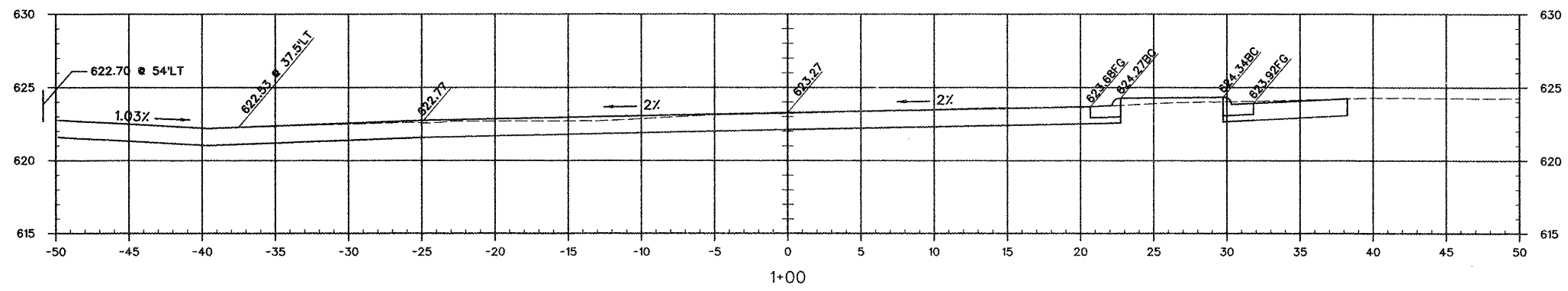
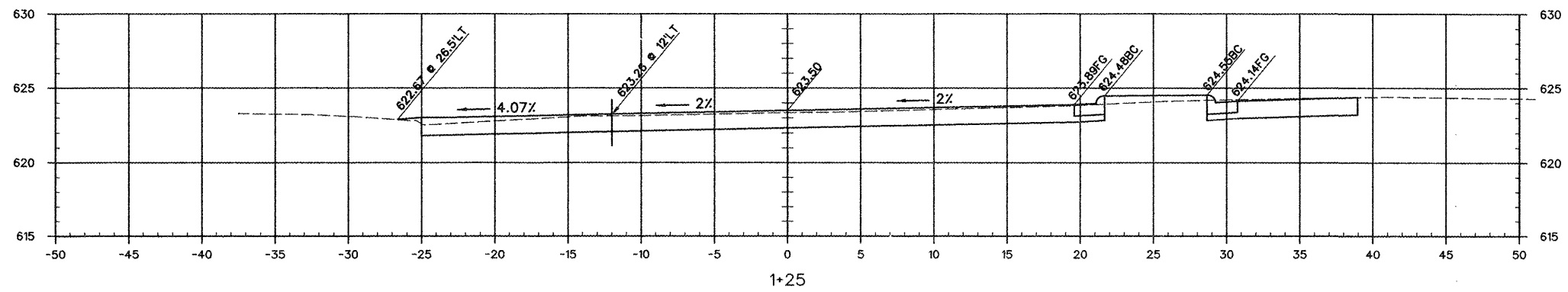
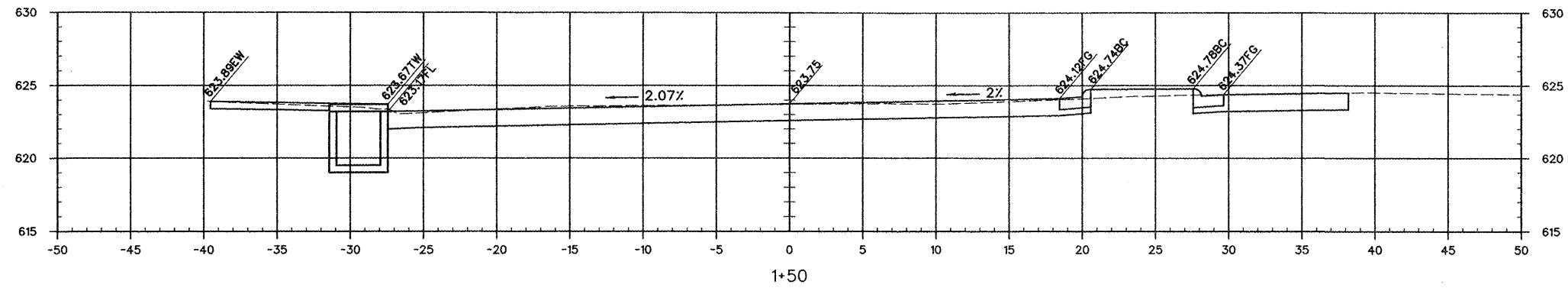


LIGHT POLE FOUNDATION
NTS

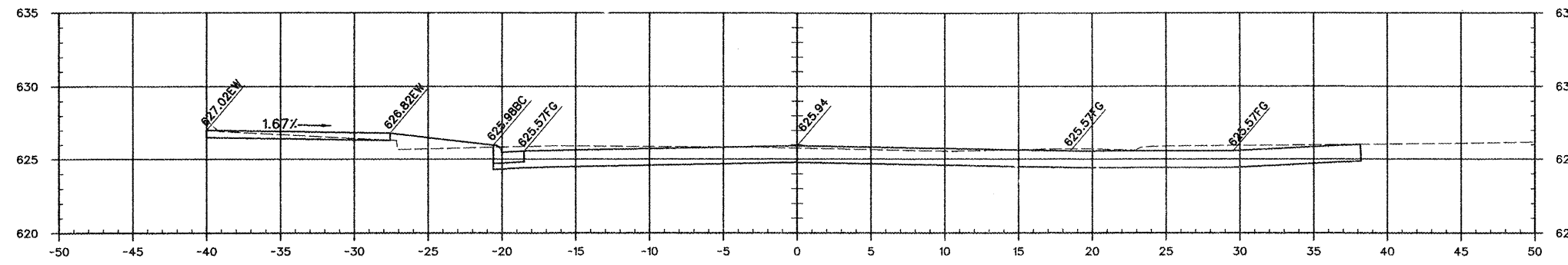


- 1-LINE DIAGRAM NOTES**
- ① 3- *3/0 IN 2" PVC SCHEDULE 80 CONDUIT.
 - ② TYPICAL FOR ALL TAP CONDUCTORS AND EQUIPMENT GROUND (EG) FROM LIGHTING BASE TO RECEPTACLES AND LIGHT FIXTURE SHALL BE *12 AWG.
 - ③ TYPICAL WIRE TAP POINT IN LIGHTING BASE.
 - ④ 3- *8 (CIRCS 3 & 5), 3- *6 (CIRCS 6 & 8), AND 1- *8 EG IN 1/4" PVC.
 - ⑤ 3- *10 (CIRCS 3 & 5), 2- *6 (CIRC 8), AND 1- *8 EG IN 1" PVC.
 - ⑥ UNSWITCHED LOWER RECEPTACLES.
 - ⑦ 3- *8 (CIRCS 2 & 4), AND 1- *8 EG IN 1" PVC.
 - ⑧ 3- *10, AND 1- *10 EG IN 3/4" PVC.
 - ⑨ SYSTEM CONTROL PANEL. SEE SPECIFICATIONS, THIS SHEET.

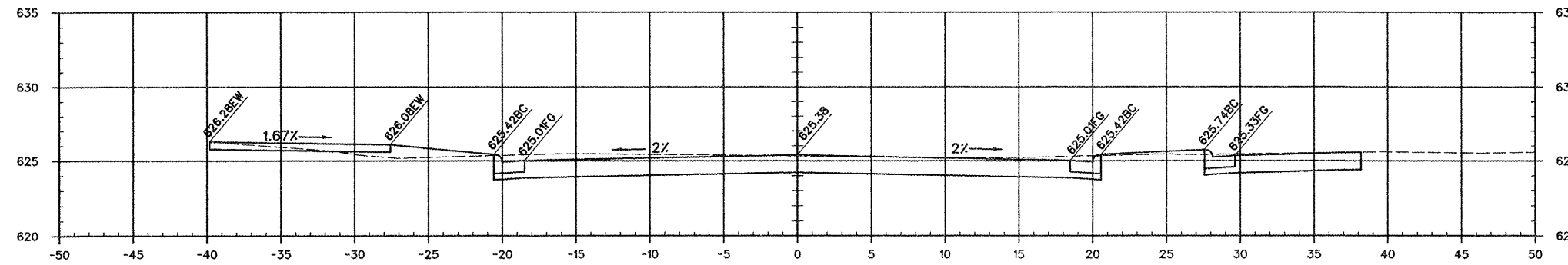
F.A.U. ROUTE	SECTION	COUNTY	TOTAL SHEETS	SHEET NUMBER
9910	10-00050-00-RS	UNION	16	11
CITY OF ANNA		PROJECT NO. M-5080(006)		
CONTRACT NO. 99470		JOB NO. C99-542-10		



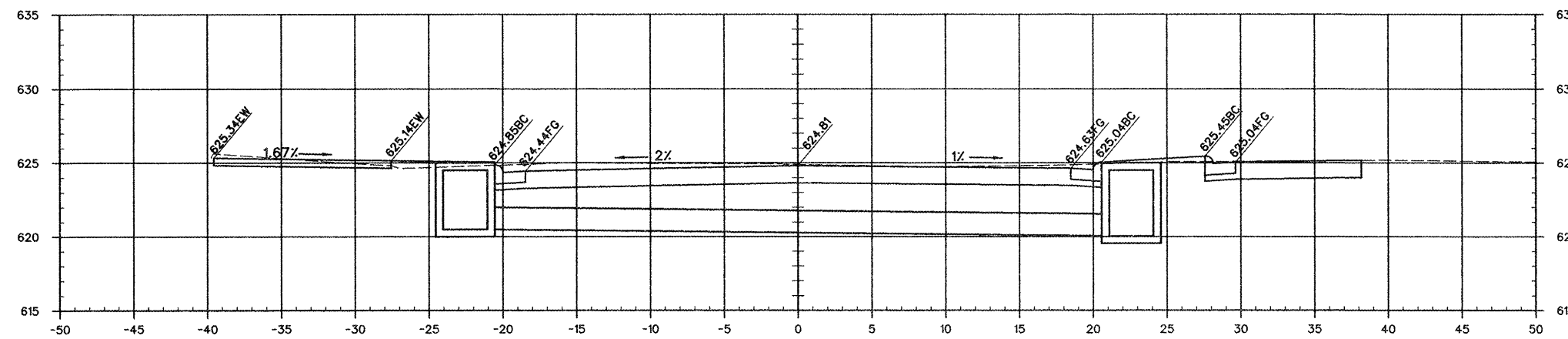
F.A.U. ROUTE	SECTION	COUNTY	TOTAL SHEETS	SHEET NUMBER
9910	10-00050-00-RS	UNION	16	12
CITY OF ANNA		PROJECT NO. M-5080(006)		
CONTRACT NO. 99470		JOB NO. C99-542-10		



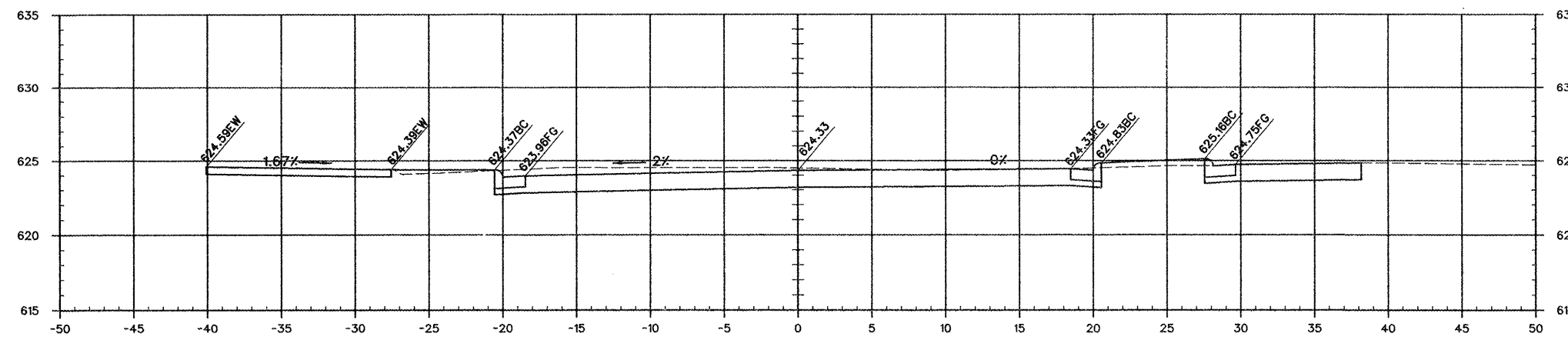
2+75



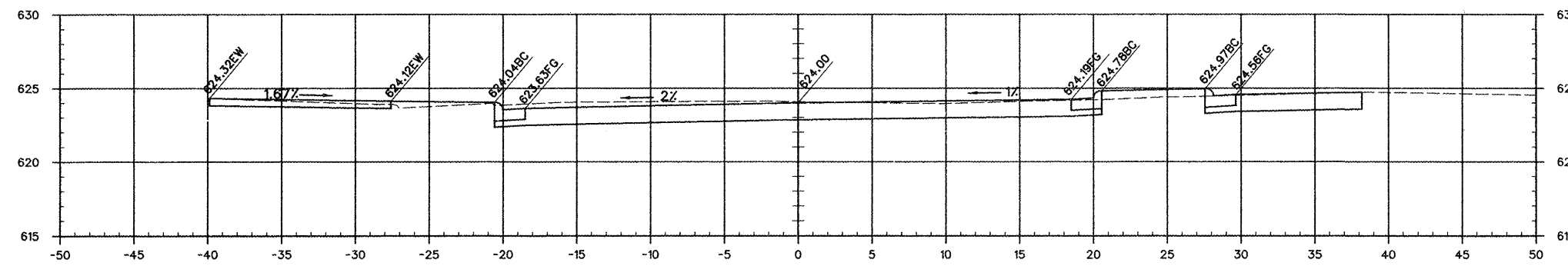
2+50



2+25



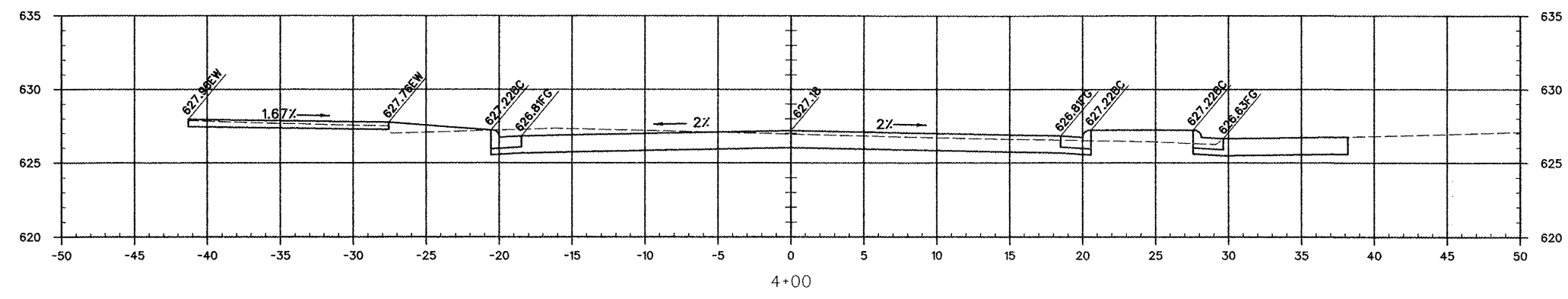
2+00



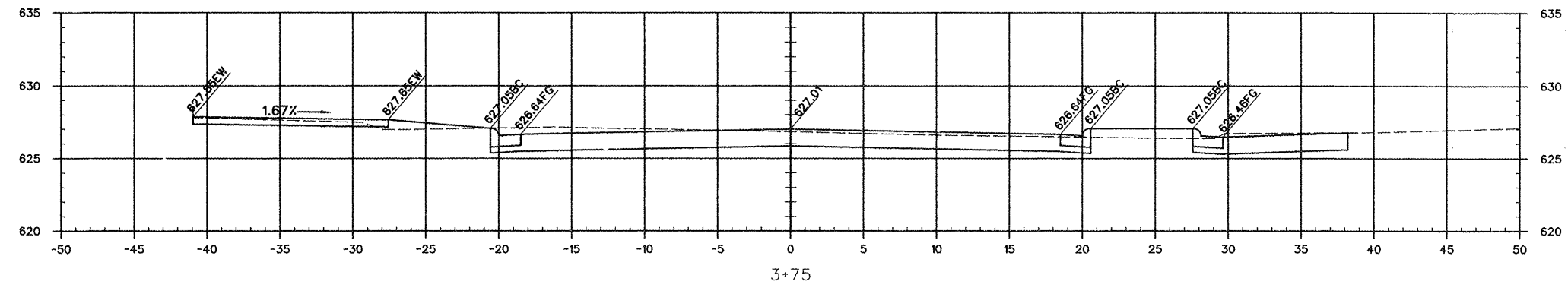
1+75

CITY OF ANNA				
UNION COUNTY, ILLINOIS				
IMPROVEMENTS TO EAST DAVIE STREET				
CROSS SECTIONS STA 1+75 - STA 2+75				

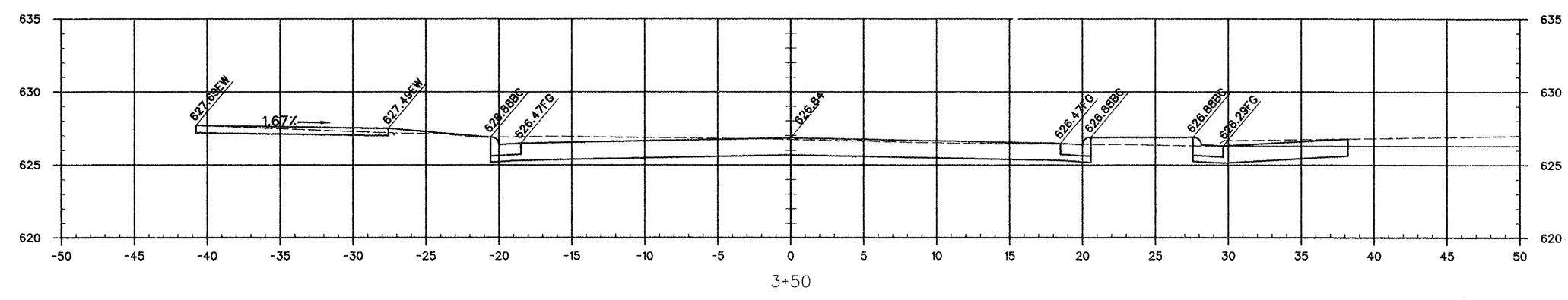
F.A.U. ROUTE	SECTION	COUNTY	TOTAL SHEETS	SHEET NUMBER
9910	10-00050-00-RS	UNION	16	13
CITY OF ANNA		PROJECT NO. M-5080(006)		
CONTRACT NO. 99470		JOB NO. C99-542-10		



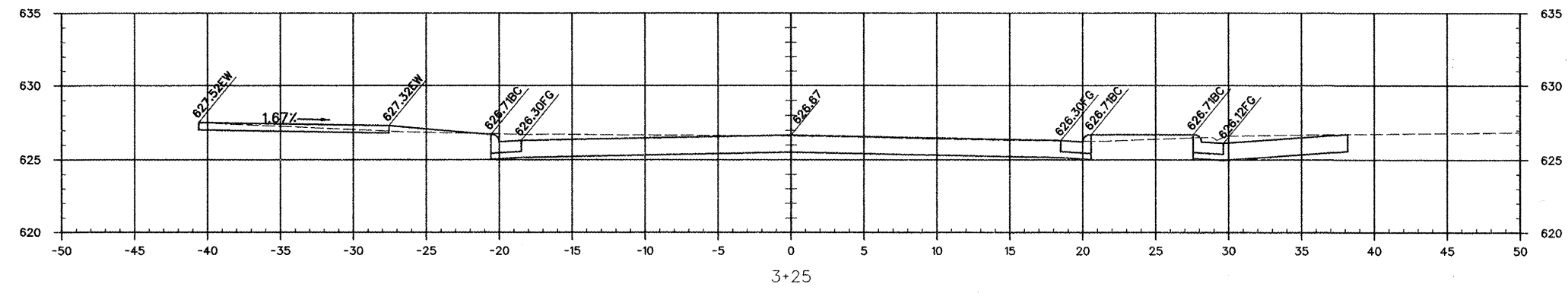
4+00



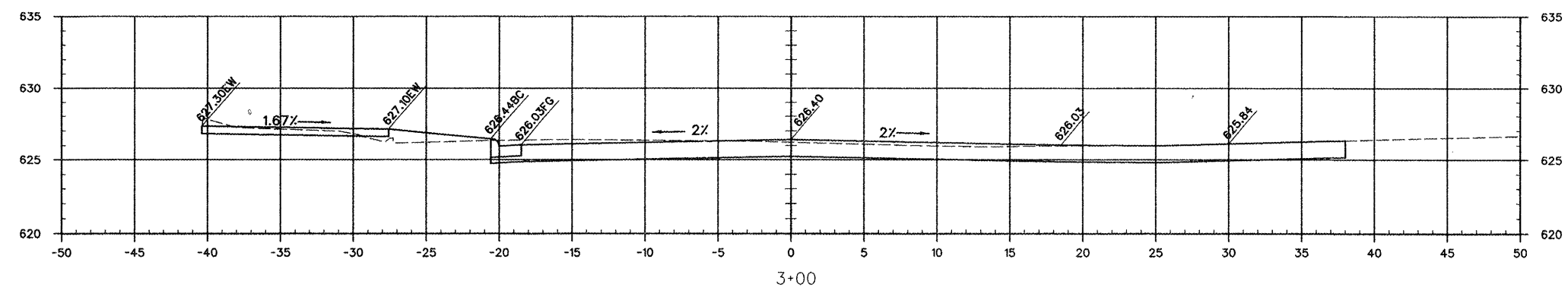
3+75



3+50



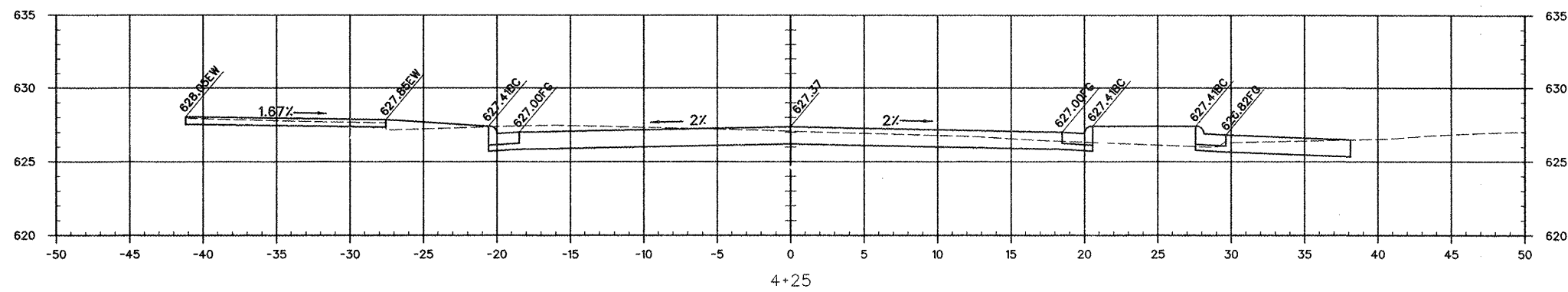
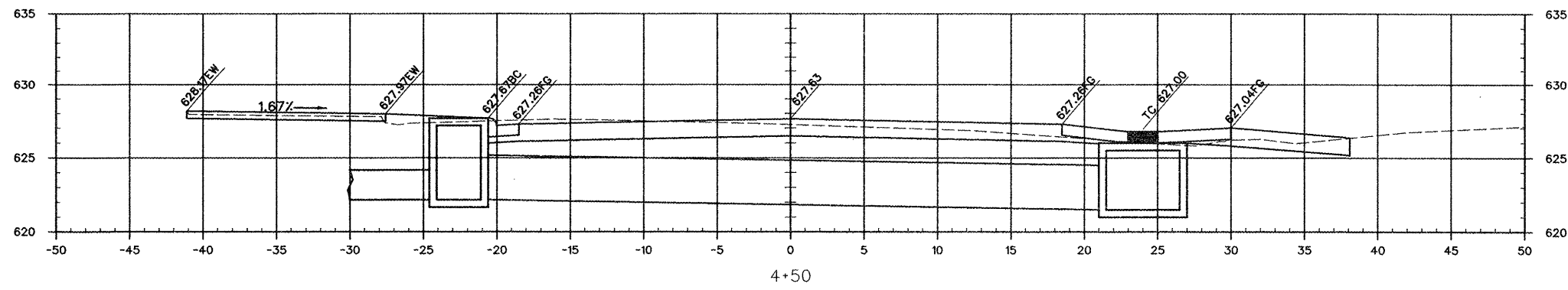
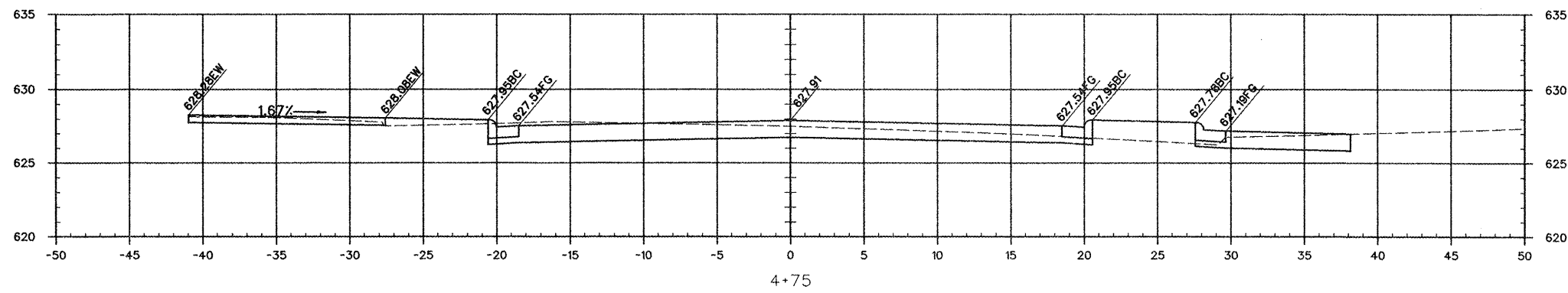
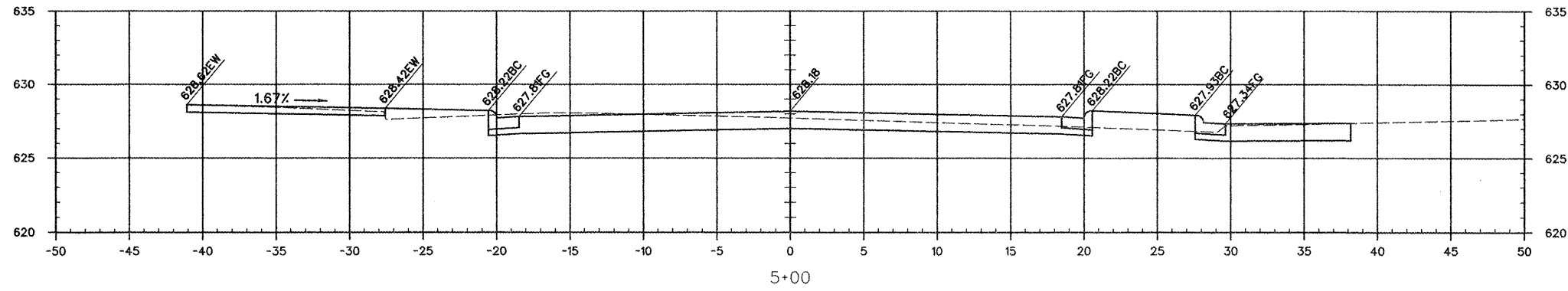
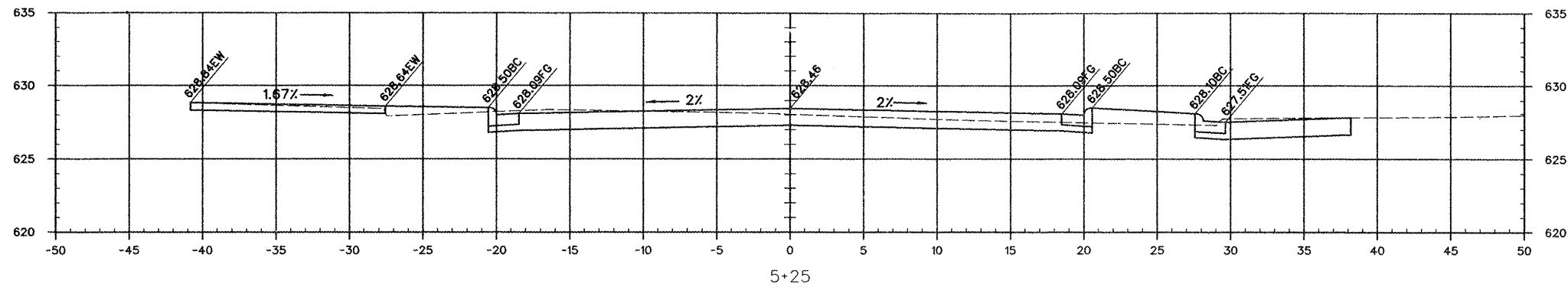
3+25



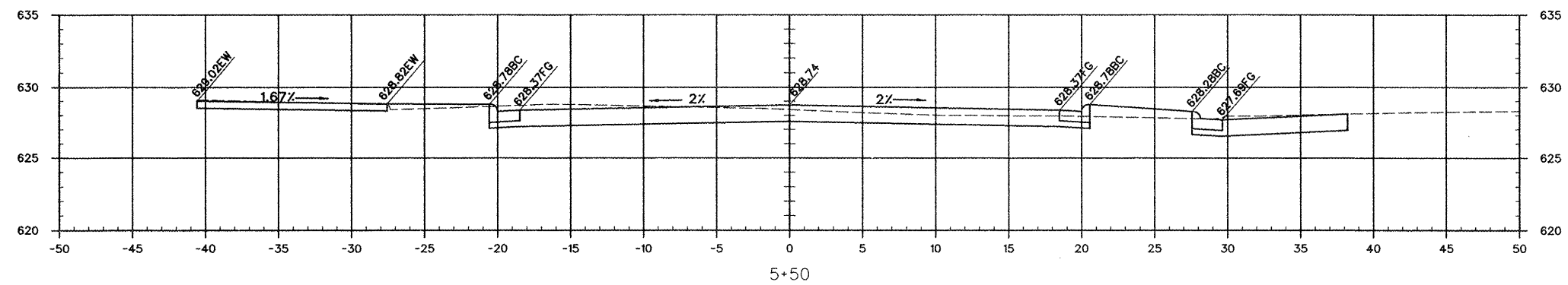
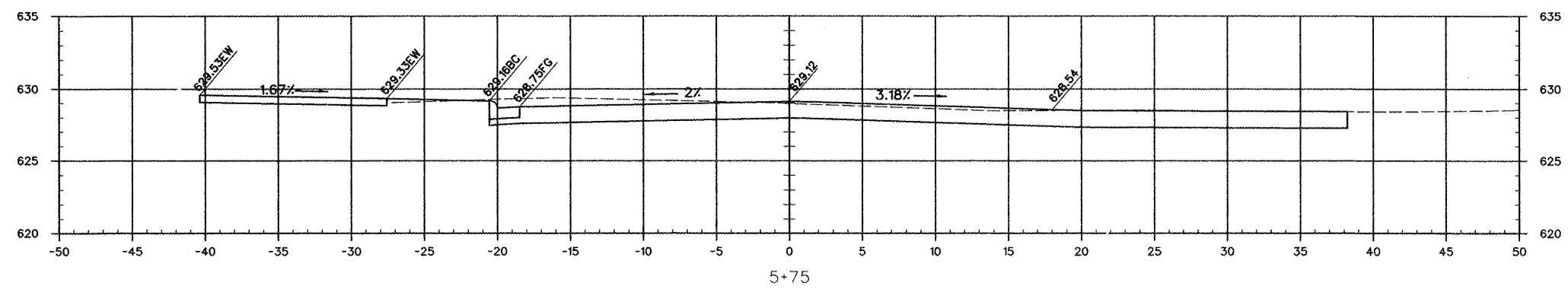
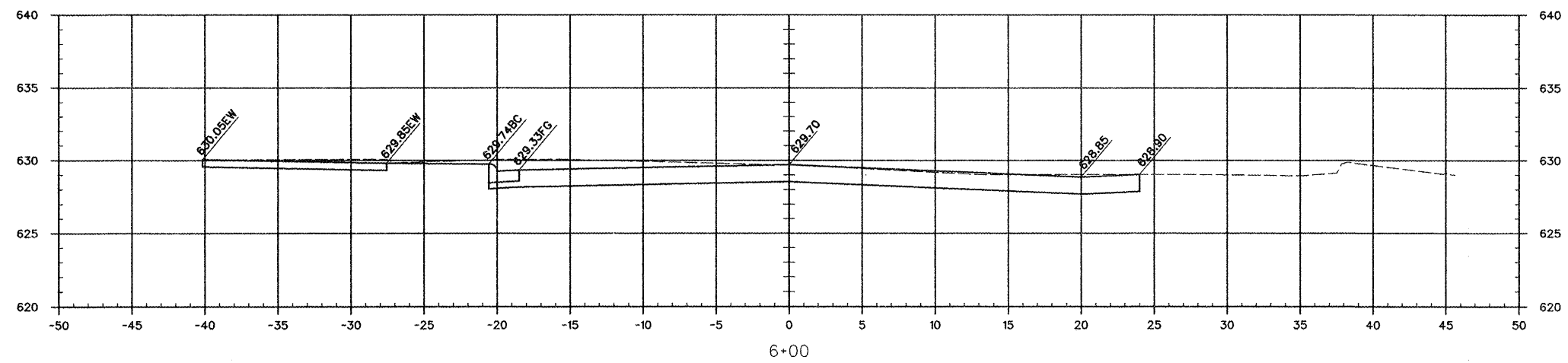
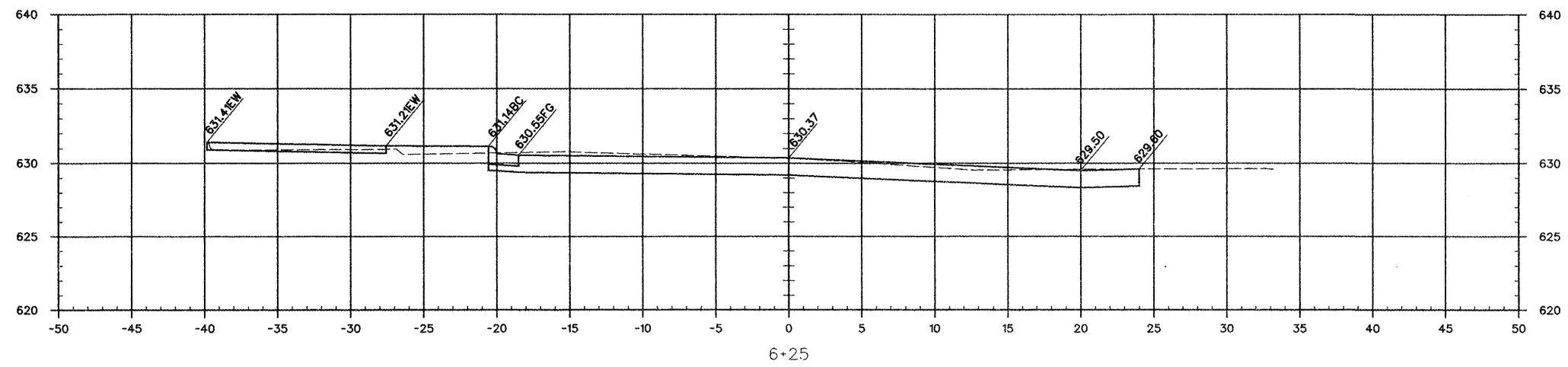
3+00

CITY OF ANNA
UNION COUNTY, ILLINOIS
IMPROVEMENTS TO EAST DAVIE STREET
CROSS SECTIONS STA 3+00 - STA 4+00

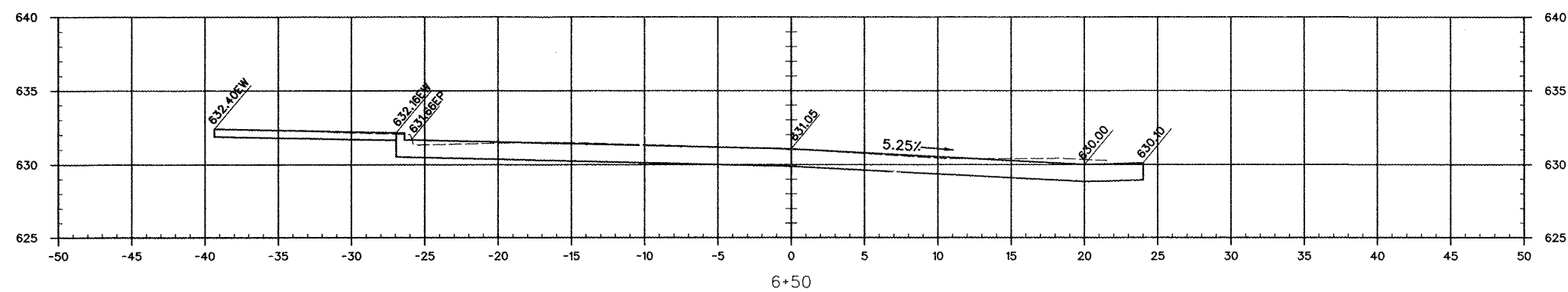
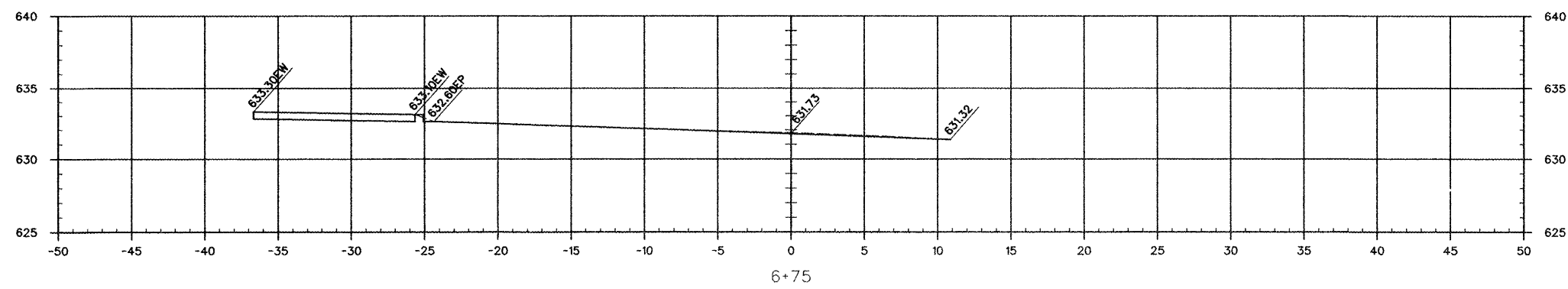
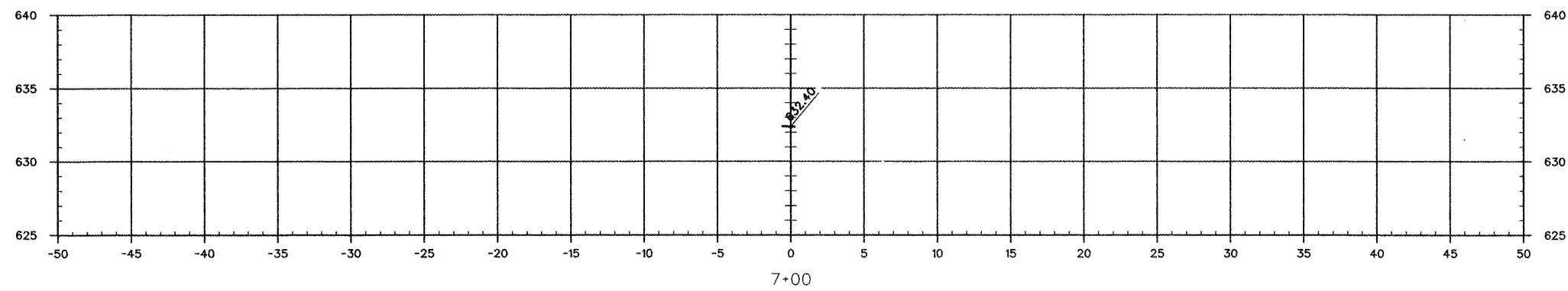
F.A.U. ROUTE	SECTION	COUNTY	TOTAL SHEETS	SHEET NUMBER
9910	10-00050-00-RS	UNION	16	14
CITY OF ANNA		PROJECT NO. M-5080(006)		
CONTRACT NO. 99470		JOB NO. C99-542-10		



F.A.U. ROUTE	SECTION	COUNTY	TOTAL SHEETS	SHEET NUMBER
9910	10-00050-00-RS	UNION	16	15
CITY OF ANNA		PROJECT NO. M-5080(006)		
CONTRACT NO. 99470		JOB NO. C99-542-10		



F.A.U. ROUTE	SECTION	COUNTY	TOTAL SHEETS	SHEET NUMBER
9910	10-00050-00-RS	UNION	16	16
CITY OF ANNA		PROJECT NO. M-5080(006)		
CONTRACT NO. 99470		JOB NO. C99-542-10		



CITY OF ANNA
 UNION COUNTY, ILLINOIS
 IMPROVEMENTS TO EAST DAVIE STREET
 CROSS SECTIONS STA 6+50 - STA 7+00