

06-15-12 LETTING ITEM 076

ROAD CLASSIFICATION: MAJOR COLLECTOR
DESIGN SPEED: 50 M.P.H.

STATE OF ILLINOIS

DEPARTMENT OF TRANSPORTATION

DIVISION OF HIGHWAYS

PLANS FOR PROPOSED ROADWAY IMPROVEMENTS

FEDERAL-AID S.T.R. & T.A.R.P. PROJECT
FAS 873, CH3

Franklin County, Illinois

Section 08-00173-00-RS

Project RS-0873(113)

JOB C-99-529-09

RTE.	SECTION	COUNTY	TOTAL SHEETS	SHEET NO.
FAS 873	08-00173-00-RS	FRANKLIN	6	

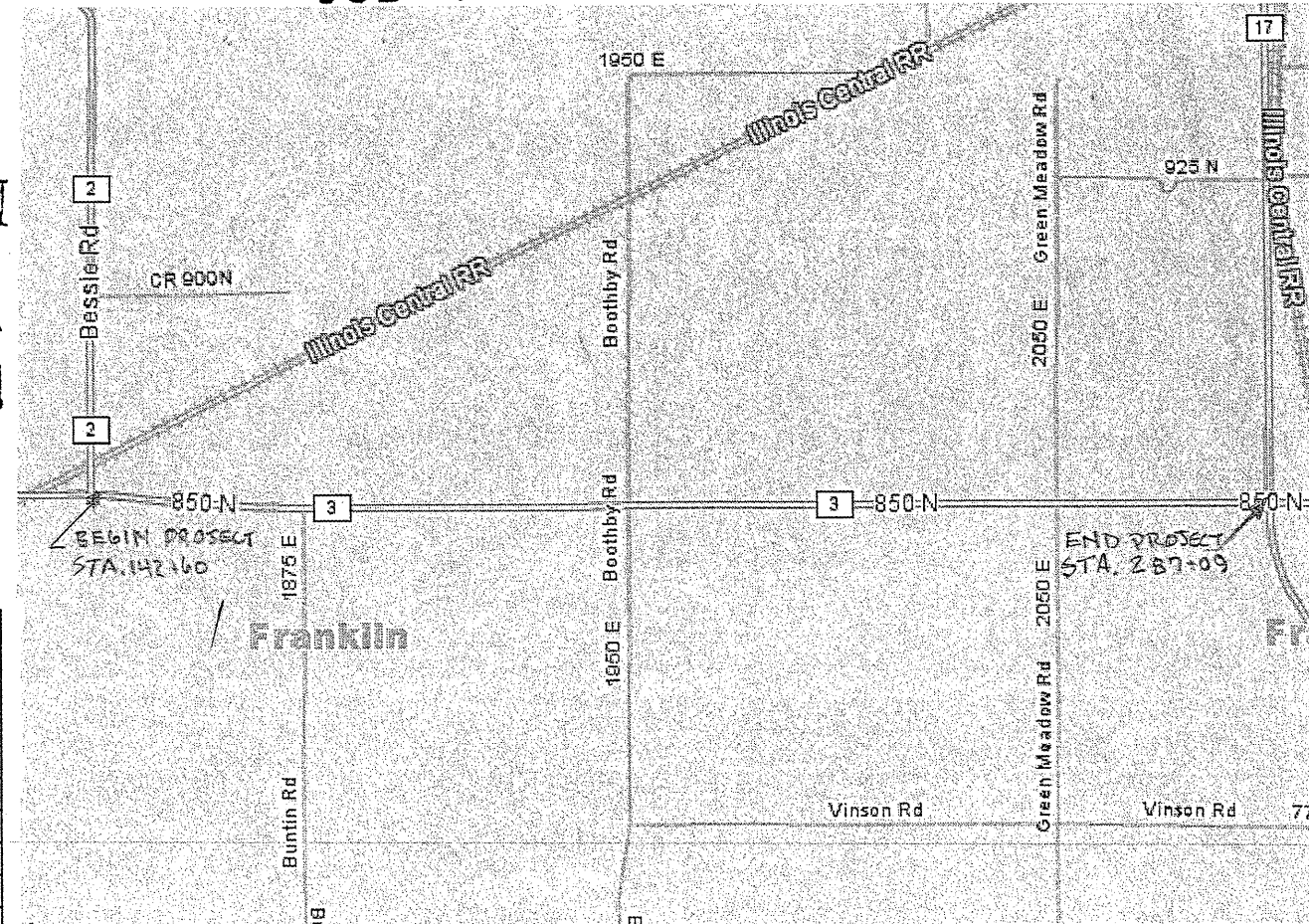
ADT:
(2011) = 800
(2031) = 1080
PC = 950
SU = 76
MU = 54
DHV₂₀ = 108

JOINT UTILITY LOCATING INFORMATION
FOR EXCAVATIONS (J.U.L.I.E.)
PHONE 1-800-892-0123

SHEET NO.	TITLE
1	COVER SHEET AND SUMMARY OF QUANTITIES
2	MISCELLANEOUS DETAILS
3	TYPICAL SECTIONS AND MISCELLANEOUS DETAILS
4-6	PLAN

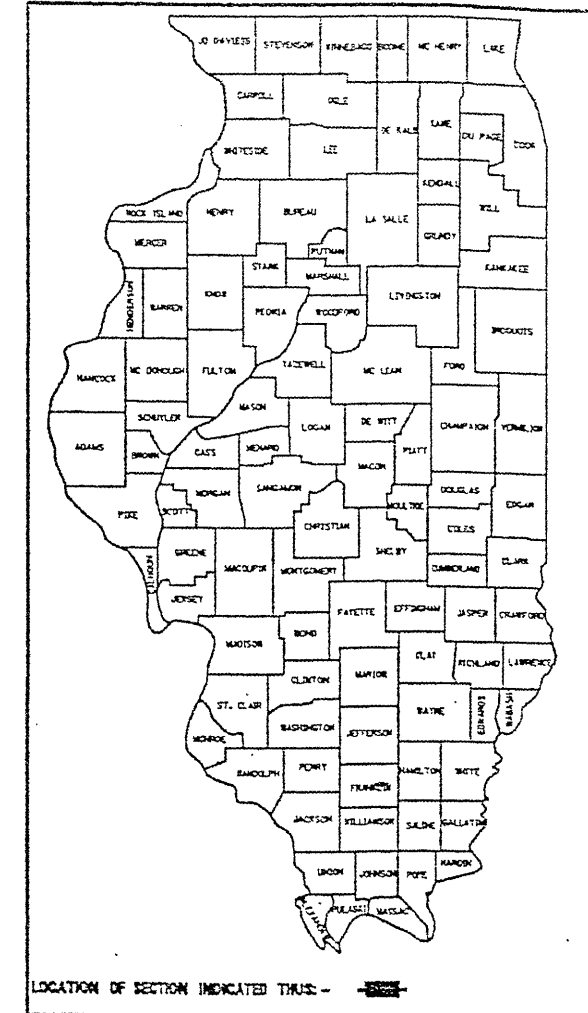
STANDARDS

- 701006-03
- 701201-04
- 701301-04
- 701306-03
- 701311-03
- 701901-02
- 780001-03
- BLR 24-2



LOCATION MAP

NET LENGTH = 2.74 miles (14,449 FEET)



SUMMARY OF QUANTITIES			
CODE NO.	PAY ITEM	UNIT	TOTAL
40200800	AGGREGATE SURFACE COURSE, TYPE B	TON	44
40600100	BITUMINOUS MATERIALS (PRIME COAT)	GALLON	277
40600982	HOT-MIX ASPHALT SURFACE REMOVAL	SQ YD	178
	-BUTT JOINT		
40603085	HOT-MIX ASPHALT BINDER COURSE,	TON	4,368
	IL 19.0, N70		
40603315	HOT-MIX ASPHALT SURFACE COURSE,	TON	3,396
	MIX "C", N70		
48100100	AGGREGATE SHOULDERS, TYPE A	TON	2,047
67100100	MOBILIZATION	L SUM	1
70300100	SHORT-TERM PAVEMENT MARKING	FOOT	1,460
Δ78001110	PAINT PAVEMENT MARKING - LINE 4"	FOOT	35,305
X4401198	HOT-MIX ASPHALT SURFACE REMOVAL	SQ YD	113
	-VARIABLE DEPTH		

Δ SPECIALTY ITEMS

STATE OF ILLINOIS
DEPARTMENT OF TRANSPORTATION

APPROVED 3/1/2012
Richard A. Rolla
FRANKLIN COUNTY HIGHWAY ENGINEER

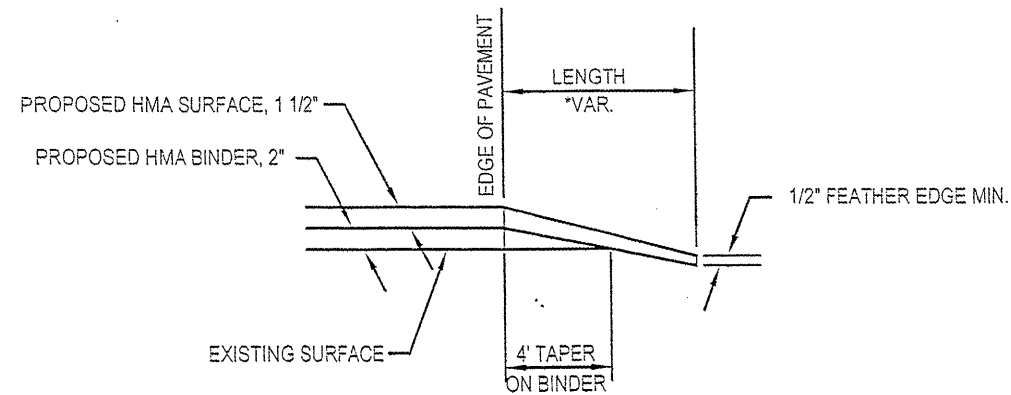
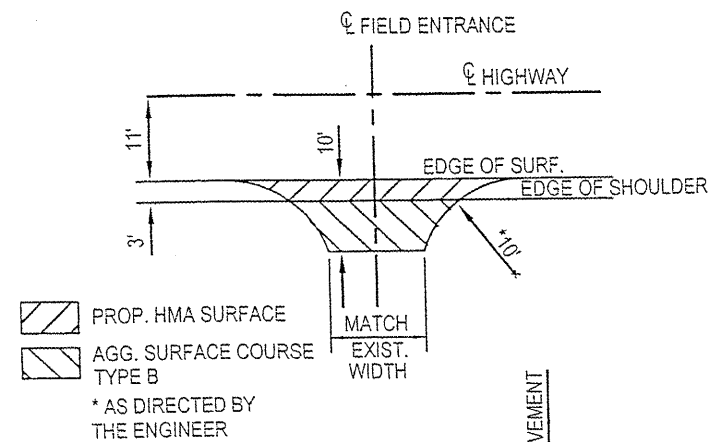
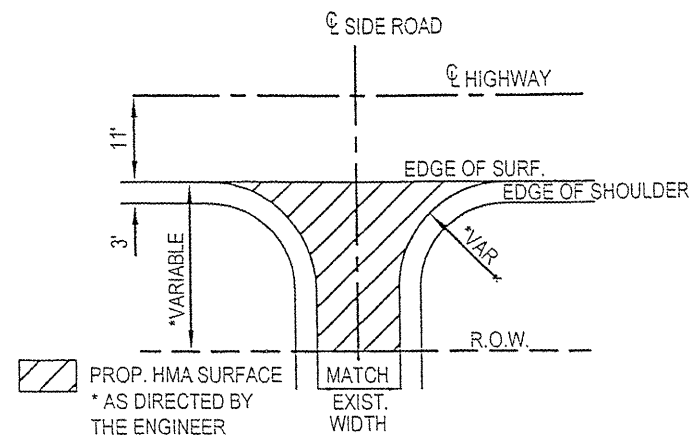
PASSED 3/27/2012
Der. W. Hall
DISTRICT 9 ENGINEER OF LOCAL ROADS & STREETS

RELEASING FOR BID
BASED ON LIMITED
REVIEW 3/27/12
Omer Osman
DEPUTY DIRECTOR OF HIGHWAYS, REGION 5 ENGINEER

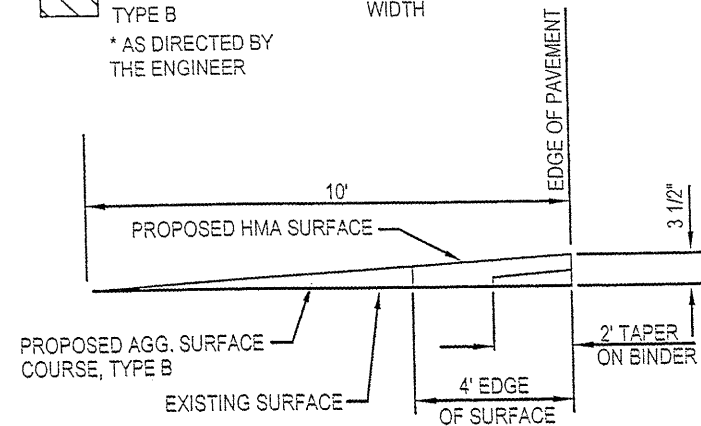


Richard A. Rolla
MICHAEL A. ROLLA
ILLINOIS REGISTERED PROFESSIONAL ENGINEER
#062-056332
LIC. EXPIRES NOVEMBER 30,

CONTRACT NO. 99475



SIDEROAD DETAILS



FIELD ENTRANCE DETAILS

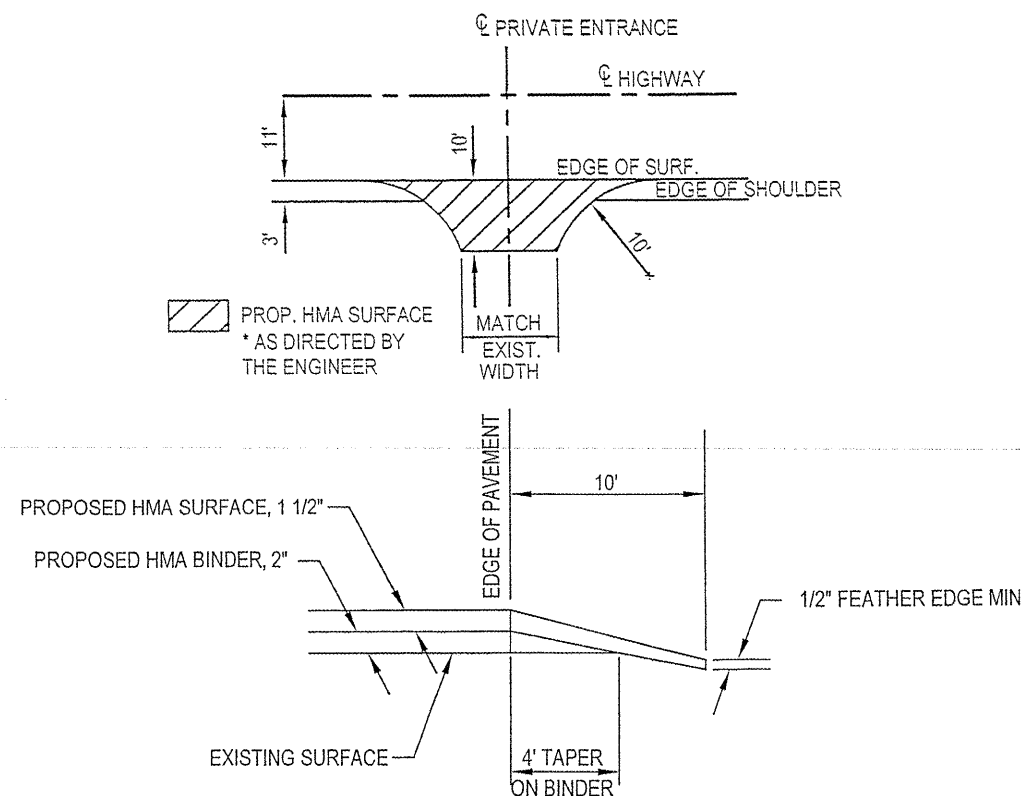
FIELD ENTRANCE QUANTITIES		
ENTRANCES	AGGREGATE SURFACE COURSE TYPE B, TON	HOT MIX ASPHALT SURFACE COURSE, MIX "C", N70, TON
ONE (1) ENTRANCE	2	1
TOTAL = 22 ENTRANCES	44	22

MAILBOX TURNOUT QUANTITIES		
TURNOUT	BITUMINOUS MATERIALS (PRIME COAT) GALLON	HOT MIX ASPHALT SURFACE COURSE, MIX "C", N70, TON
ONE (1) TURNOUT	3	1
TOTAL = 9 TURNOUTS	27	9

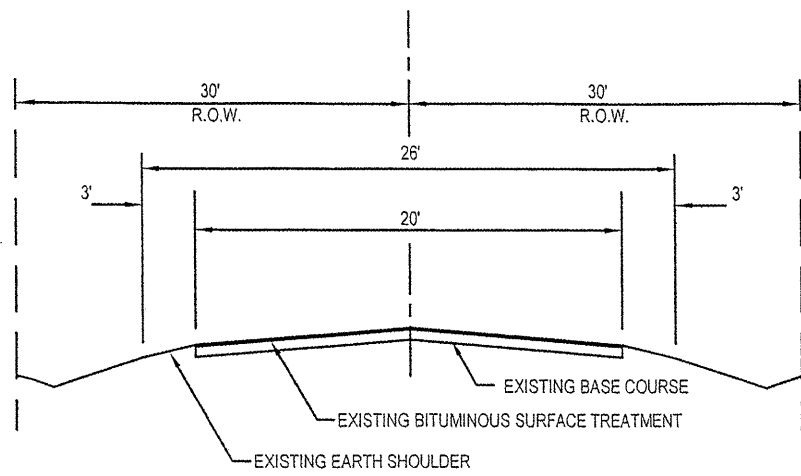
PRIVATE ENTRANCE QUANTITIES		
ENTRANCES	BITUMINOUS MATERIALS (PRIME COAT) GALLON	HOT MIX ASPHALT SURFACE COURSE, MIX "C", N70, TON
ONE (1) ENTRANCE	8	2
TOTAL = 18 ENTRANCES	144	36

COMMERCIAL ENTRANCE QUANTITIES		
ENTRANCES	BITUMINOUS MATERIALS (PRIME COAT) GALLON	HOT MIX ASPHALT SURFACE COURSE, MIX "C", N70, TON
ONE (1) ENTRANCE	24	4
TOTAL = 3 ENTRANCES	72	12

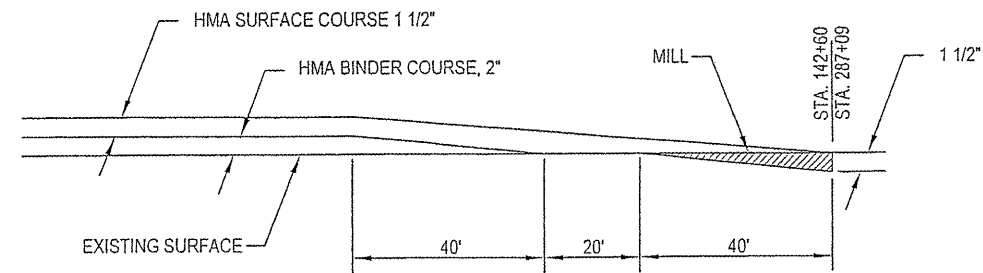
SIDEROAD ENTRANCE QUANTITIES	
LOCATION	HOT MIX ASPHALT SURFACE COURSE, MIX "C", N70, TON
RT. STA. 167+87	15
RT. STA. 208+64	8
LT. STA. 208+67	9
RT. STA. 262+55	10
LT. STA. 262+55	9
TOTAL = 5 SIDEROADS	51



PRIVATE AND COMMERCIAL ENTRANCE DETAILS

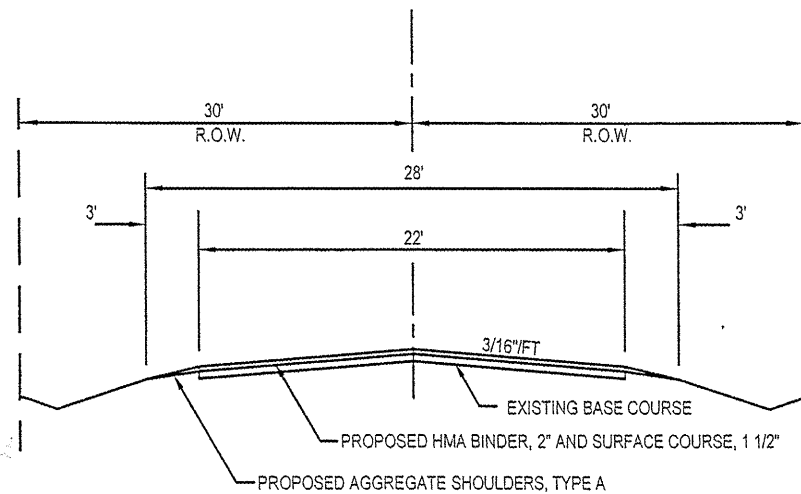


TYPICAL EXISTING SECTION

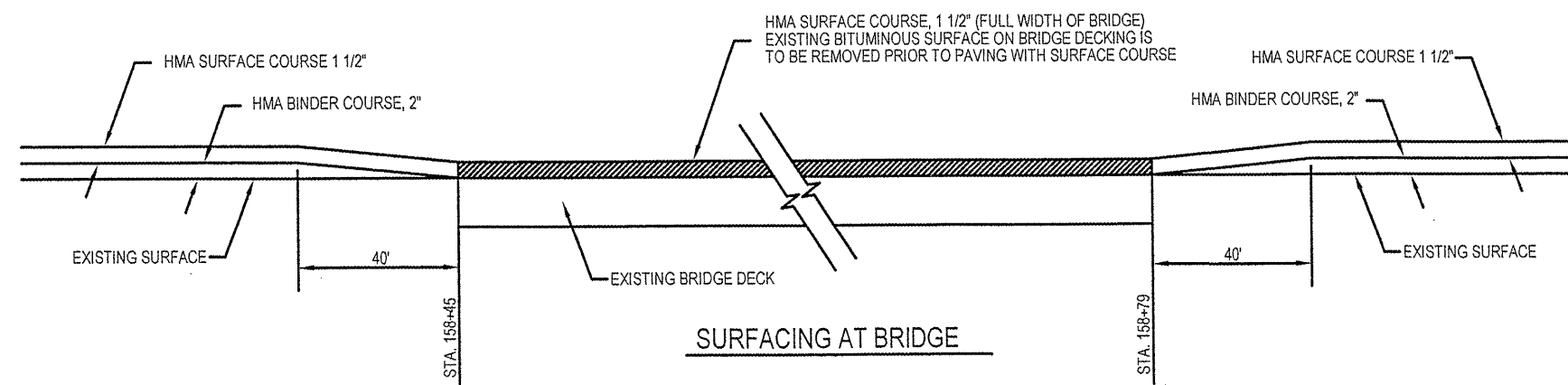


BUTT JOINT

LOCATION	COLD MILLING
STA. 142+60 TO 142+60	88.89
STA. 286+69 TO 287+09	88.89
158+45 TO 158+79	113.33
TOTAL	177.78



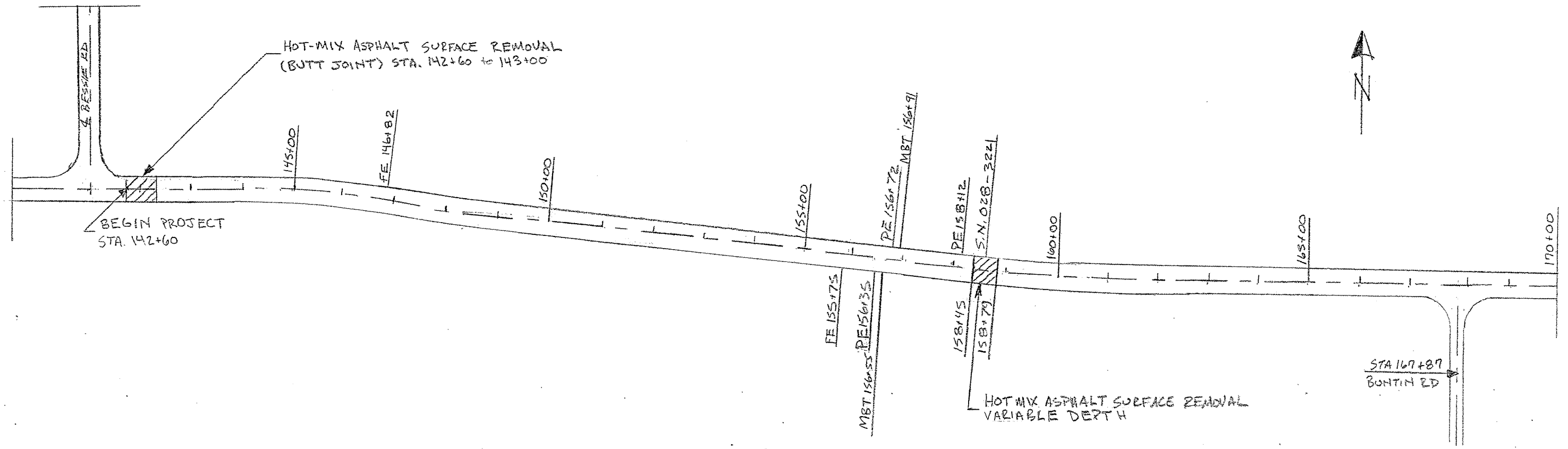
TYPICAL PROPOSED SECTION



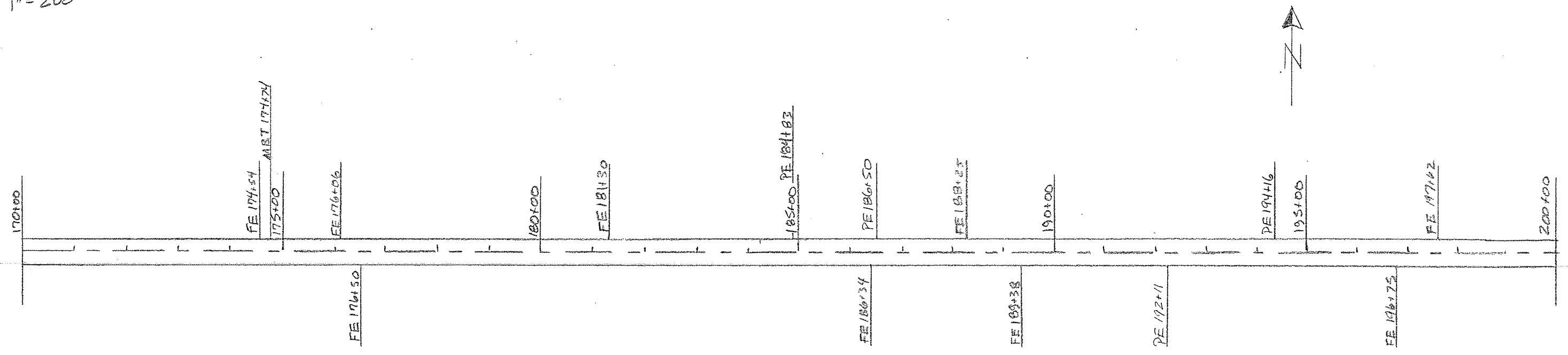
SURFACING AT BRIDGE

EASTBOUND LANE			WESTBOUND LANE			STATION	EDGE LINE (WHITE SOLID)
STATION	NO PASSING (YELLOW SOLID)	CENTERLINE (YELLOW DASHED)	STATION	NO PASSING (YELLOW SOLID)	CENTERLINE (YELLOW DASHED)		
142+60 TO 149+84		181	149+84 TO 154+31		112	142+60 TO 287+09	28882
149+84 TO 154+31	447		157+04 TO 160+84	380			
154+31 TO 215+93		1541	215+93 TO 218+88		74		
215+93 TO 218+88	295		223+07 TO 226+44	337			
218+88 TO 224+21		133	226+44 TO 229+98		89		
224+21 TO 229+98	577		229+98 TO 238+28	830			
229+98 TO 287+09		1428					
TOTALS	1319	3283		1547	275	TOTALS	28882

ROUTE	SECTION	COUNTY	TOTAL SHEETS	SHEET NO.
FAS 873	08-00173-00-RS	FRANKLIN	6	4
CONTRACT No.:			99475	

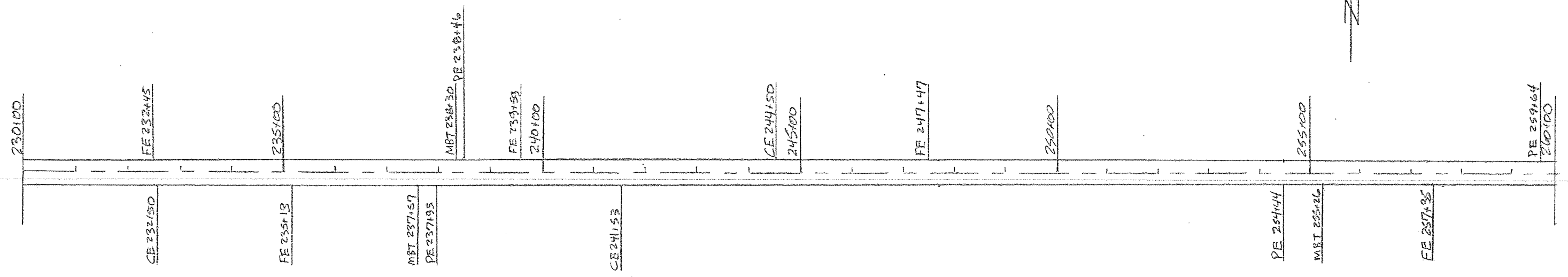
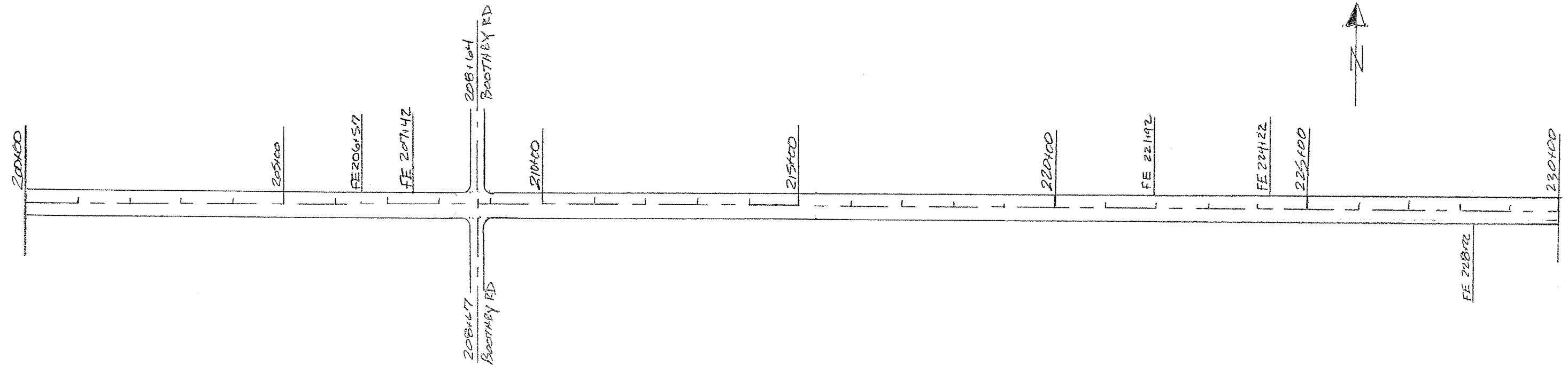


SCALE: 1" = 200'



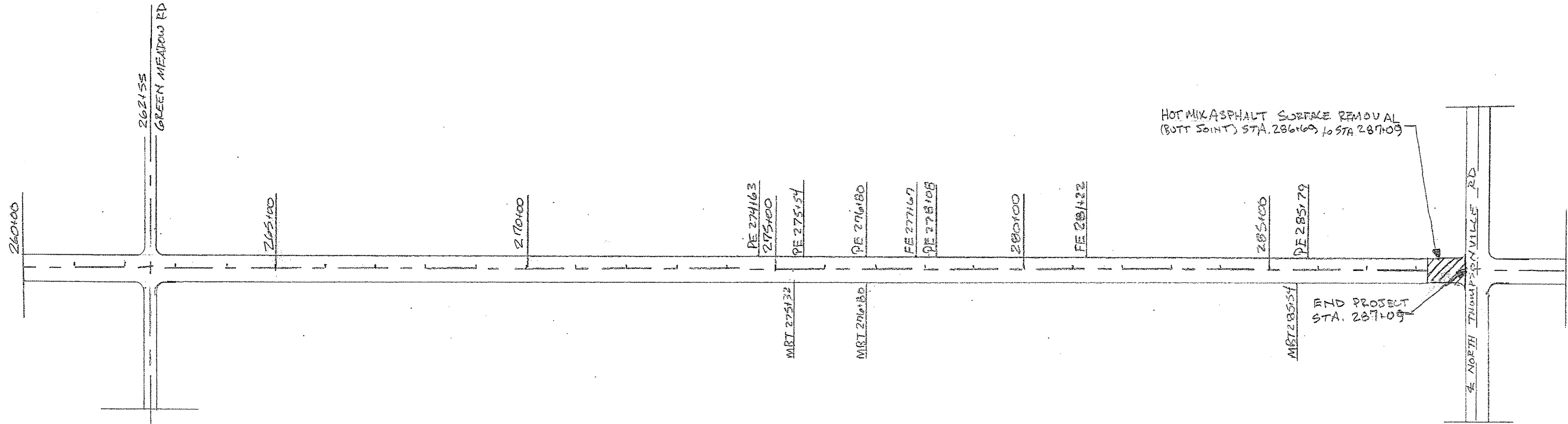
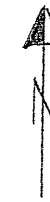
PLAN
STATION 142+60 TO 200+00

ROUTE	SECTION	COUNTY	TOTAL SHEETS	SHEET NO.
FAS 873	08-00113-00-RS	FRANKLIN	6	5
CONTRACT No.:				99475



PLAN
STATION 200+00 TO 260+00

ROUTE	SECTION	COUNTY	TOTAL SHEETS	SHEET NO.
FAS 873	00-00193-00-RS	FRANKLIN	6	6
CONTRACT No.:				99475



PLAN
STATION 260+00 TO 287+09